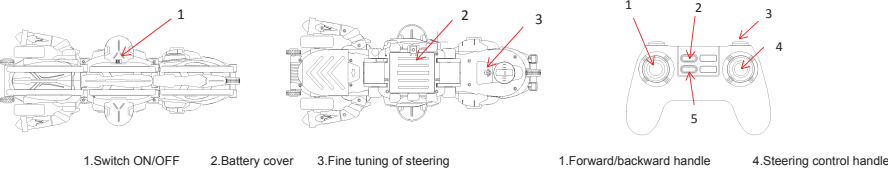




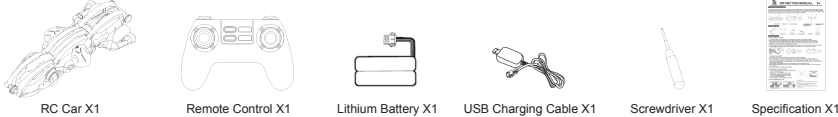
# INTURCTION MANUAL 6+

## 1. Rollover Remote Control Vehicle

The remote control car adopts 2.4G variable speed control technology, which can control the functions of forward, backward, left and right turning and tumbling without interference. Push the handle to control the speed. The larger the camber, the faster the handle, and the smaller the slower the handle. The powerful motor and the design of non-skid tires make the stable running of the car possible, bringing you the ultimate experience full of speed and excitement!



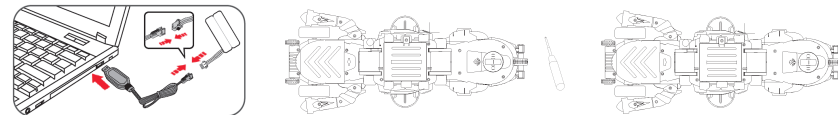
## 2. Package Included



## 3. Preparatory Work

### 3.1 Remote control car charging

- Unscrew the battery cover inside the car using a screwdriver, and take out the battery to charge it.
- Insert one end of the USB charging cable into the battery connector and ensure that it is properly connected. Plug the other end of the USB charging cable into a safe power source with a USB socket, such as a PC, laptop, mobile power or USB power outlet. The red light is steady on during the charging process and goes off after the charging is complete. It takes about 150 minutes to fully charge.
- After charging the battery, connect the battery to the battery connector, and ensure that the battery is properly connected.
- Insert the battery into the battery case, install the battery cover, and tighten the screw using a screwdriver.



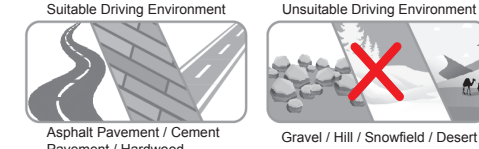
### ⚠ Matters need attention:

- Minors should be accompanied and guided by a guardian to charge their batteries.
- It is recommended to fully charge the battery before first use to ensure sufficient charge. Please understand that due to lack of power supply, the running time will be shortened if you do not charge in advance for the first time.
- Do not charge inflated, leaking, or damaged batteries. Don't overcharge the battery. Battery, which is caused by automatic discharge during transportation.
- Use the original USB charging cable. Do not use damaged or non-original charging cables.
- Keep flammable materials away from charging and do not place them on conductive surfaces (such as carpets, wood floors or furniture).
- Avoid electric shock when using electrical products.

### 3.2 Installing the remote control battery

- Use a screwdriver to unscrew the battery box of the remote control. Open the battery cover.
- Install two new 1.5V AA batteries (not included) into the battery compartment, and ensure that the "+" and "-" of the battery matches the "+" and "-" of the indication in the battery box.
- Reinstall the battery cover and tighten the screws.

### 3.3 Drive in suitable environment.



### ⚠ NOTICE

- Do not use it in conditions like rains and snowstorms etc. to avoid accidents.
- Do not use it on public roads to avoid impacts on the traffic.
- Do not use it near crowded place, people or animals to avoid environmental damage or body injury.
- Do not use it in the rain or let the car run over the puddle to avoid malfunction.
- Do not use it near rivers, ponds or lakes to prevent the car from falling into the water.

FCC Warning Statement

Changes or modifications not expressly approved by the party responsible for compliance could void the user's authority to operate the equipment. This equipment has been tested and found to comply with the limits for a Class B digital device, pursuant to Part 15 of the FCC Rules. These limits are designed to provide reasonable protection against harmful interference in a residential installation. This equipment generates uses and can radiate radio frequency energy and, if not installed and used in accordance with the instructions, may cause harmful interference to radio communications. However, there is no guarantee that interference will not occur in a particular installation. If this equipment does cause harmful interference to radio or television reception, which can be determined by turning the equipment off and on, the user is encouraged to try to correct the interference by one or more of the following measures:

- Reorient or relocate the receiving antenna.
- Increase the separation between the equipment and receiver.
- Connect the equipment into an outlet on a circuit different from that to which the receiver is connected.
- Consult the dealer or an experienced radio/TV technician for help.

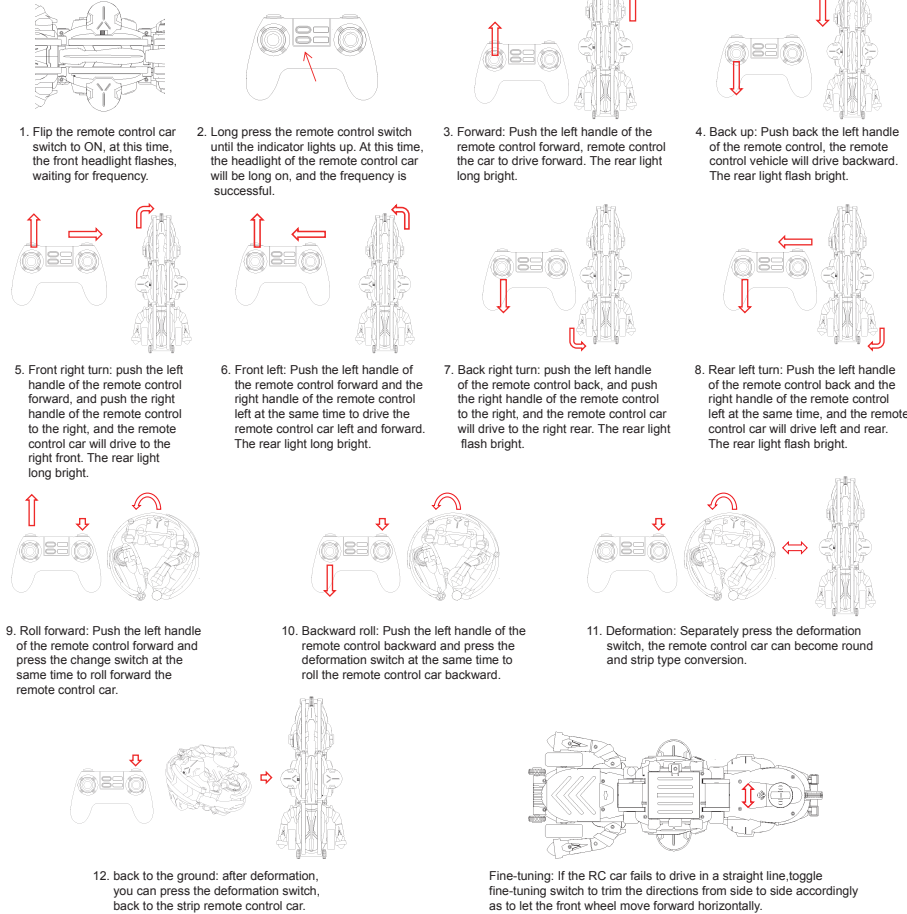
This device complies with part 15 of the FCC Rules. Operation is subject to the following two conditions:

- This device may not cause harmful interference, and
- this device must accept any interference received, including interference that may cause undesired operation.

The device has been evaluated to meet general RF exposure requirement.

The device can be used in portable exposure condition without restriction.

## 4. Operation Of Remote Control



## 5. Maintain



## 6. Break down to expel

Problems	Causes	Solutions
RC Car/ remote controller out of control/ not responsive	1. Switch not turn on. 2. Batteries improperly installed. 3. Low battery voltage. 4. Low battery voltage. 5. RC car not pair with the remote controller.	2. Fail to activate fine-tuning function. 2. Ensure the positive and negative terminals are correctly aligned. 3. Replace the batteries of the remote controller/recharge the batteries for the RC car. 4. Control it with in 45 meters. 5. Power off the RC car and the remote controller and then turn on again and pair again.
Close control range.	1. Signal interference around. 2. Low battery voltage for RC car/remote controller.	1. Try to drive in another place 2. Replace the batteries of the remote controller/recharge the batteries for the RC car.
RC Car fails to drive in a straight line.	1. Excessive surface friction or extremely smooth surface. 2. Fail to activate fine-tuning function.	1. Try to drive in another place. 2. Toggle fine-tuning switch to trim the directions.



# 使用说明书 6+

## 1. 翻滚遥控车

遥控车采用2.4G变速控制技术，可以不受干扰地控制前进、后退、左右转弯和翻滚等功能。推动手柄来控制速度。手柄弧度越大越快，手柄弧度越小越慢。强大的电机和防滑轮胎的设计，使汽车的稳定行驶成为可能，给您带来充满速度和刺激的终极体验！

