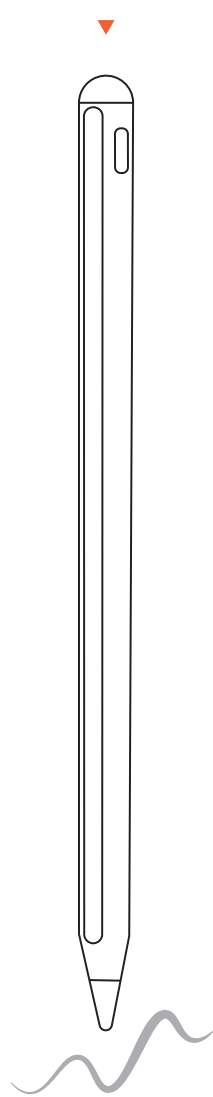
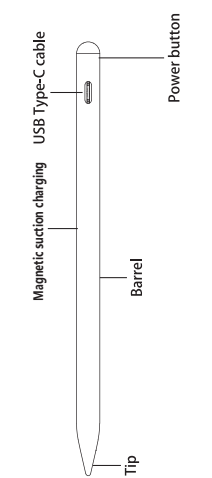


More Product Details

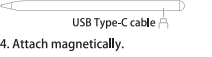


Product overview

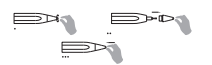


Operating Instruction

1. Touch and hold the key for 1s, the indicator light will light up and start to use. Short touch the switch button twice to manually shut down. Turn on the camera, touch the switch once, and touch once to take a photo.
2. Charge the stylus with USB Type-c cable.
3. The stylus will off automatically after 5 minutes for energy saving.



5. Replace the tip (unscrew the old tip and screw a new pen tip.)



LED Indicator description

After the stylus is on, it will into Bluetooth pairing mode automatically (Blue light flash) The Bluetooth pairing mode will be close after 30 seconds. When it is connected, the indicator will be off.	
Working	Green light
Charging	Red light on
Full charged	Green light
Camera control	Red light(Flash one time)
Double-click the top button to return to the home screen	
To protect the battery, the stylus will off after the red indicator flash 15 times.	
When Bluetooth is connected and not using the camera, press the button can up the volume	

How to check the battery level

1. Swipe all the way to the right on your Home Screen to show Today View.



2. Touch and hold an empty area in Today View, then tap the Add button when it appears in the upper-left corner.



3. Select "Batteries".



4. Swipe left or right to choose a widget size, then tap Add Widget.



5. Tap Done in the upper-right corner, or just tap your Home Screen.



Product Parameter

Product Name	pencil
Model Number	P11C
Bluetooth	BLE4.2
Input	5V=200mA
Battery Capacity	90mAh
Max Battery Output Voltage	3.7V
Working Temperature	0°C - 35°C
Charging Time	60mini
Duration Time	10H
Compatible With	iPad Air 10.5 inch (3rd Generation) iPad Air 10.9 inch (4/5th Generation) iPad mini 7.9 inch (5th generation) iPad 9.7 inch (6th generation) iPad 10.2 inch (7th generation & 8th generation 9th generation) iPad Pro 12.9 inch (3rd generation & 4th/5th generation) iPad Pro 11 1st 2nd 3rd generation Notes: Compatible with iPad launched in 2018-2021 or latest.
Packing List	Stylus 1PCS Charging Cable 1PCS Replaceable Tip 1PCS User Manual 1PCS

All the above data and info comes from lab. They might vary with environment or other factors. Photos only for reference.

Warranty Card

Order Number:	Model Number:
Product Code:	Customer Name:
Phone number:	Date of Purchase:
Address of Purchase:	

Attention

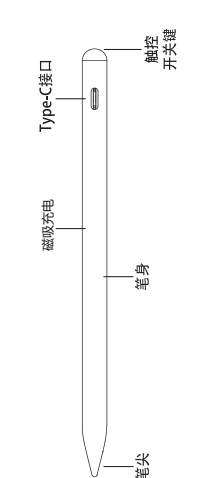
1. Do not write on other surfaces than the iPad screen, pen tip worn out may cause screen damage.
2. Please keep the Stylus tip clean. Dust on the tip will affect the writing performance.
3. The pen tip will wear out after use. Please replace the new tip to prevent damaging the screen.
4. Place the pen in a place where children or pets could not reach it.
5. The pen contains sensitive electronic elements (including batteries). Please be careful when using them. If you accidentally drop, overheats, be squeezed or touched with liquid, you may cause damage to the body. Do not use damaged pen.
6. Do not let the solvent or liquid flow into the product, which might cause product damage.
7. Touch screen protective film may affect the writing experience.



IPAD Penil  
Operating Instructions  
P11C



产品概况

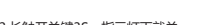


使用说明

- 1.长触开关键1S,指示灯亮起, 开始使用。



- 2.连接USB Type-C充电线充电。



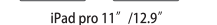
- 3.长触开关键3S, 指示灯灭就关机。而且本产品自带智能电源管理系统, 5分钟后自动关机。



- 4.磁吸



5.更换笔尖。(旋出旧笔尖, 如图按钮替换笔尖。)



指示灯说明

开机后直接进入蓝牙搜索状态(蓝灯闪), 蓝牙搜索时间为30S, 连接成功或超时未连接时蓝灯停止闪烁。	
工作中	绿灯常亮
充电中	红灯亮
充满电	绿灯常亮
低电压保护红灯15天后强制关机	

如何检查电池电量

1. 在主屏幕上一直向右轻扫, 直到显示“今天”视图。



2. 按住“今天”视图中的空白区域, 然后轻点左上角显示的“添加”按钮。



3. 选择“电池”。



4. 向左或向右轻扫以选取一种小组件尺寸, 然后轻点“添加小组件”。



5. 轻点右上角的“完成”, 或者直接轻点主屏幕。



产品参数

产品名称	pencil
型号	P11C
蓝牙	BLE4.2
输入	5V=200mA
电池容量	90mAh
锂电池工作限制电压	3.7V
工作温度	0°C - 35°C
充电时间	60minute
工作时间	10小时
适用型号	iPad Air 10.5寸 (第三代) iPad Air 10.9寸 (第四代/第五代) iPad mini 7.9寸 (第五代) iPad 9.7寸 (第六代) iPad 10.2寸 (第七代/第八代/第九代) iPad Pro 11/12.9寸 (第三/四/五/六代) iPad Pro 11寸 (第一/二/三代) 备注: 兼容2018款或2019以上iPad版本 & 系统更新到12.0版本以上或最新才可使用。
产品清单	电筒笔x1 充电线x1 替换笔尖x1 说明书x1

以上参数均来源于本公司实验室, 实际参数会因产品或其他因素而有差异, 图片仅供参考, 请以实物为准。

产品保修卡

产品名称:	产品型号:
产品编号:	顾客名称:
联系电话:	购买日期:
购买地址:	

注意事项

1. 切勿在屏幕以外的其他表面使用笔, 以免笔尖过度磨损导致损坏屏幕。
2. 使用时请保持笔尖干净, 因为灰尘或颗粒可能会影响触控效果。
3. 使用过程中笔尖会逐渐磨损, 请及时更换笔尖以免损坏屏幕。
4. 避免儿童或宠物接触或接触到笔, 以免造成伤害。
5. 笔内包含敏感电子元件 (含电池), 使用时请小心, 若不慎跌落、焚烧、弯曲、破坏性挤压或接触到液体, 可能会对某造成损坏或导致人身伤害, 切勿使用已损坏的笔。
6. 请勿使用任何溶剂或者液体清洁产品, 以免清洁时溶剂或液体流入产品内部导致产品受损或损坏内部元件。
7. 部分屏幕贴膜可能会影响书写体验。



This device complies with part 15 of the FCC Rules. Operation is subject to the following two conditions: (1) this device may not cause harmful interference, and (2) this device must accept any interference received, including interference that may cause undesired operation.

Any changes or modifications not expressly approved by the party responsible for compliance could void the user's authority to operate the equipment.

NOTE: This equipment has been tested and found to comply with the limits for a Class B digital device, pursuant to Part 15 of the FCC Rules. These limits are designed to provide reasonable protection against harmful interference in a residential installation. This equipment generates, uses and can radiate radio frequency energy and, if not installed and used in accordance with the instructions, may cause harmful interference to radio communications. However, there is no guarantee that interference will not occur in a particular installation.

If this equipment does cause harmful interference to radio or television reception,

which can be determined by turning the equipment off and on, the user is encouraged to try to correct the interference by one or more of the following measures:

- Reorient or relocate the receiving antenna.
- Increase the separation between the equipment and receiver.
- Connect the equipment into an outlet on a circuit different from that to which the receiver is connected.
- Consult the dealer or an experienced radio/TV technician for help.

The device has been evaluated to meet general RF exposure requirement. The device can be used in portable exposure condition without restriction