

285*138mm-157G铜版纸折页包含折页

TUYA SMART LIGHT

Support voice control(Word with Alexa/Google assistant etc.)



1.Download APP

Connect WiFi

Connect WiFi with your mobile phone , keep the Bluetooth available and make sure the network signal is good.

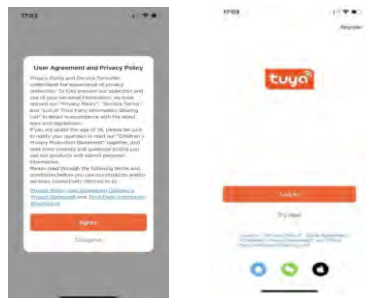
Download APP

You can down load the APP by searching“Tuya Smart” in mobile app stores or scanning the following QR code.



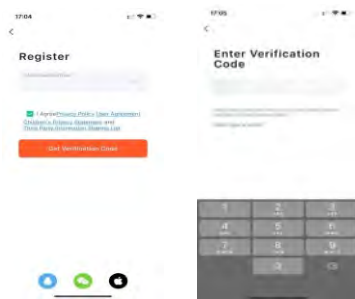
2.Register/Log in APP

Please use the cell phone number or email address to register an account in "Tuya" APP.



1. Open the Smart Tuya app and click Agree

2. Log in to your existing account or click on the top to register

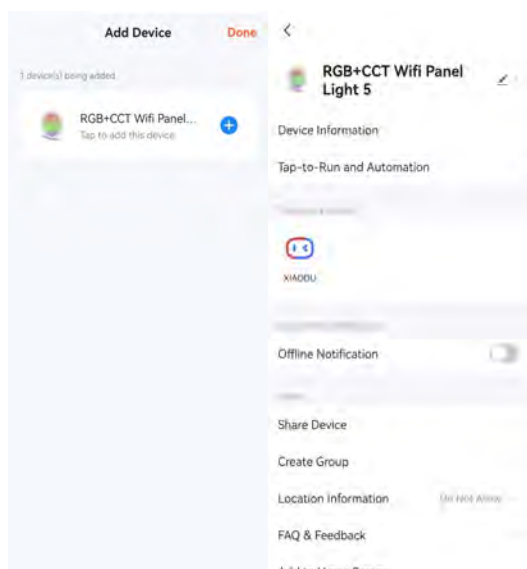
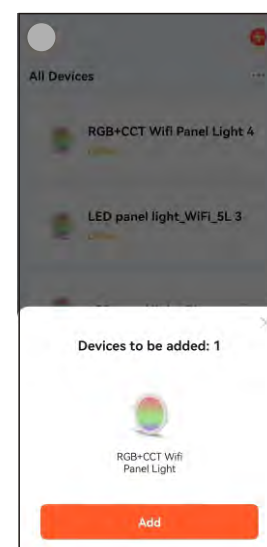
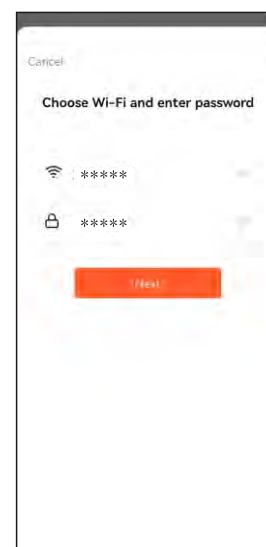


3.Register a new account and fill in the information

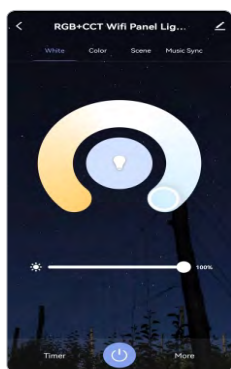
4. Enter the verification code to complete the registration

3.APP Connect Lamp

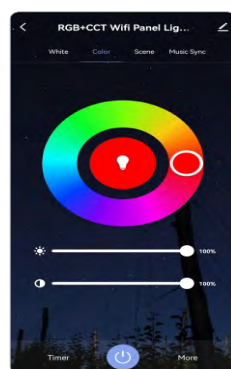
- 1.Plug in power and check whether the light is blinking quickly,if no blink,switch the light on,off,on,off,on (Repeat 5 times) till confirm the light is blinking.
- 2.Open the APP,wait for the system to search the lights and connect the lights,and click"complete"after the step. (In"Automatic scan"mode , you need to allow the App to use "Wi-Fi and Bluetooth" permission,so keep WiFi and Bluetooth are available.If can't scan light,please use the the"Add Manually")



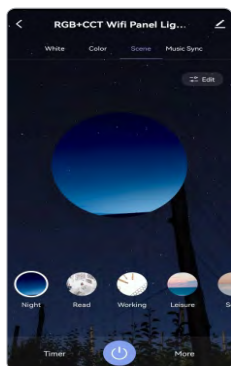
3.After connecting,click the icon of the connected light on the APP to enter the control interface.



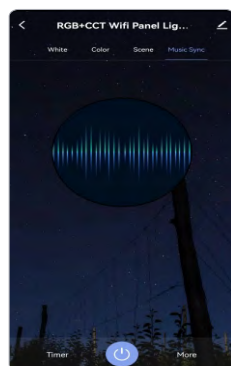
1. Color temperature adjustment
2800-7000K.
Brightness adjustment 1%-100%



2.color adjustment
color depth adjustment



3.Scene Mode Options



4. Music rhythm function

TUYA SMART LIGHT

Support voice control(Word with Alexa/Google assistant etc.)



FCC Warning:

This equipment has been tested and found to comply with the limits for a Class B digital device, pursuant to part 15 of the FCC Rules. These limits are designed to provide reasonable protection against harmful interference in a residential installation. This equipment generates, uses and can radiate radio frequency energy and, if not installed and used in accordance with the instructions, may cause harmful interference to radio communications. However, there is no guarantee that interference will not occur in a particular installation. If this equipment does cause harmful interference to radio or television reception, which can be determined by turning the equipment off and on, the user is encouraged to try to correct the interference by one or more of the following measures:

- Reorient or relocate the receiving antenna.
- Increase the separation between the equipment and receiver.
- Connect the equipment into an outlet on a circuit different from that to which the receiver is connected.
- Consult the dealer or an experienced radio/TV technician for help.

Caution: Any changes or modifications to this device not explicitly approved by manufacturer could void your authority to operate this equipment.

This device complies with part 15 of the FCC Rules. Operation is subject to the following two conditions: (1) This device may not cause harmful interference, and (2) this device must accept any interference received, including interference that may cause undesired operation.

The device has been evaluated to meet general RF exposure requirement. The device can be used in portable exposure condition without restriction.

Radiation Exposure Statement

This equipment complies with FCC radiation exposure limits set forth for an uncontrolled environment. This equipment should be installed and operated with minimum distance 20cm between the radiator and your body.

This transmitter must not be co-located or operating in conjunction with any other antenna or transmitter.