

HIGH PERFORMANCE IN-CEILING

Model:	Speaker Size:	Bluetooth Function
526	6 inch	NO
526BT	6 inch	YES

THE MUSTS OF SAFETY

1. It is recommended that you keep this manual for future reference (when installing the speaker).
2. Do not expose the speaker to rain or any damp or water, which may cause electric shock or fire.
3. Limit the voltage specified on the stereo, such as the use of higher voltage may cause electric shock or fire. Never trim, distort or destroy.
4. Avoid installing or setting up audio in unstable places, such as shaking tables or uneven surfaces, which can avoid injury or property loss when the audio falls.
5. Please installed the speaker in a place that can support the weight of the speaker or on a stable shelf, which can avoid personal injury or property damage caused by the audio falling can cause electricity.
6. Do not wet hand plug or pull out the plug, it may cause electric shock.
7. When pulling out the plug, be sure to pull the plug and not the wire. The use of damaged electrical equipment may cause fire or electric shock.
8. When moving the speaker, please unplug it in advance. Moving the sound with the plug may cause fire or electric shock. When pulling out the plug, make sure you hold the plug and pull it out.
9. Do not cover the ventilation vent on the speaker, which may cause internal heating and trigger a fire.
10. Avoid installing the speaker in a place where there is much damp or dust, direct contact with sunlight, close to the electric heater, or black smoke or steam, which may cause fire or electric shock.

BLUETOOTH CONNECTIVITY

(ONLY FOR BLUETOOTH VERSION):

1. Make sure the Bluetooth Ceiling Speaker system is properly connected to a power Source, and speaker wires are connected correctly.
2. Power ON the speaker system, and you shall hear hear a tone indicating the Bluetooth system is ready for pairing.
3. Then, go to your Smart device's Bluetooth Network Settings, The Bluetooth Network Name will appear as '**526BT**' on your device list, and click for connection. No password is required to connect but if you are prompted enter '**6688**'
3. You shall hear another indication tone when a successful Bluetooth connection is established, then you are ready to enjoy the music.

This device complies with part 15 of the FCC Rules. Operation is subject to the following two conditions: (1) this device may not cause harmful interference, and (2) this device must accept any interference received, including interference that may cause undesired operation.

Any changes or modifications not expressly approved by the party responsible for compliance could void the user's authority to operate the equipment.

NOTE: This equipment has been tested and found to comply with the limits for a Class B digital device, pursuant to Part 15 of the FCC Rules. These limits are designed to provide reasonable protection against harmful interference in a residential installation. This equipment generates, uses and can radiate radio frequency energy and, if not installed and used in accordance with the instructions, may cause harmful interference to radio communications. However, there is no guarantee that interference will not occur in a particular installation.

If this equipment does cause harmful interference to radio or television reception, which can be determined by turning the equipment off and on, the user is encouraged to try to correct the interference by one or more of the following measures:

-- Reorient or relocate the receiving antenna.

- Increase the separation between the equipment and receiver.
- Connect the equipment into an outlet on a circuit different from that to which the receiver is connected.
- Consult the dealer or an experienced radio/TV technician for help.

The device has been evaluated to meet general RF exposure requirement. The device can be used in portable exposure condition without restriction

WARRANTY

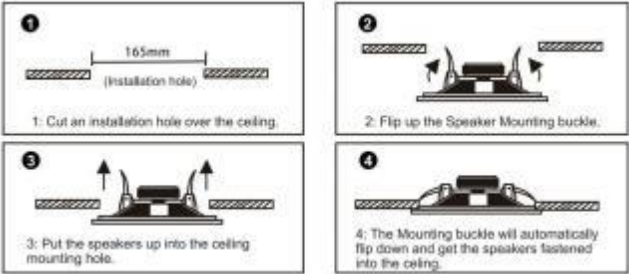
Products have 1 year Limited Warranty against defects in materials and workman ship.

TECHNICAL SPECIFICATIONS	
MODELNO:	526/526BT
SPEAKER SIZE:	6.5 Inch
Power Output:	10-100W
Sensitivity:	88±3db
Impedance:	8 Ohms
Frequency Response:	60-20KHZ
Cut-Out Diameter:	205mm

INSTALLATION GUIDE(645/645BT)

Secure the unit to the rear surface of the drywall. Put in the strips of adhesive to secure the grille.

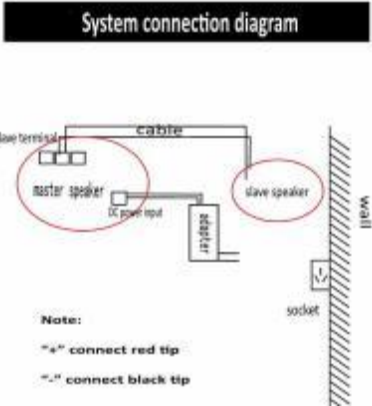
Replace the metal grille.



645 /645BT -6INCH

产品说明书
PRODUCT MANUAL

SYSTEM CONNECTION DIAGRAM



In-Ceiling Speaker