



2.5K 3 Channel & WiFi Dashcam



**REGISTER WITHIN THE FIRST 30 DAYS**

Scan this QR Code Using your iPhone or Android's Camera to start your Product Registration.

Or visit the link using mobile or PC/MAC:

[peztio.com/apps/product-registration](https://peztio.com/apps/product-registration)

## WATCH GUIDE VIDEOS

---

### **WATCH GUIDE VIDEOS**

Thank you for choosing a lcesky Dash cam.  
The more familiar you are with your dash cam, the better effect you will have on the road. We therefore strongly suggest you watch our guide videos(the code & link below will re-direct to YouTube).

---

**1** Scan the below code with your cellphone camera



**2** Visit the below link directly via the browser

<https://www.youtube.com/playlist?list=PLUKmX2ADhfGFicqGp-BZNuuEm31fDwZKE>



CONTACT US

### **NOT SATISFIED / NEED SUPPORT?**

Dear customer,

If you are not satisfied with our product or have issue while using our product, please feel free to contact us before you return the product to us, we will try our best to help you!

### **HEY, FIND US HERE**

OUR EMAIL ADDRESS:

[support@iceskyus.com](mailto:support@iceskyus.com)

Scan the code with your cellphone and you can email us directly!



OUR WhatsApp

Scan the code with your WhatsApp and chat with our support right now!



Typically we will reply to you in 24 hours on working day!

## INDEX

---

### **INDEX**

<b>Must Read</b>	1	<b>App Introduction</b>	27
<b>Tips Before Use</b>	3	Live Video Interface	27
<b>Package Contents</b>	6	Camera File Interface	28
Product Overview	7	Get Support from App	29
Button Functions	8	<b>Play Back Videos</b>	30
Screen Overview	9	Play Back from App	30
Indicator Meanings	10	Camera Playback Mode	30
<b>Installation</b>	10	Play Back from PC	31
Insert/Remove a SD Card	11	<b>Video Settings</b>	32
Suction Installation	13	<b>Parking Mode Setting</b>	35
Mount M4 on Windscreen	14	<b>System Settings</b>	37
Connect Power Cable	15	<b>Specifications</b>	39
Install Rear Camera	16	<b>FAQ</b>	40
Final Adjustment	17		
<b>WiFi Connection</b>	20		
Download Cellphone App	21		
Turn on the WiFi of M4	22		
Authorize App Permission	22		
Start to Use App	26		

## MUST READ



For your quick start and make sure your M4 dash cam works properly, please read the following notice carefully.



Please keep the camera connected to the provided cigarette lighter charger for daily use, as it is not a battery-powered camera. **If your car does not have a cigarette lighter port, please contact us for a compatible USB TYPE C cable and connect to the power port that can reach 5V/2A output, otherwise, issues may occur to this 3-channel dashcam.**



A 64GB SD card is included in this package. **The SD card is already inserted into the M4 dashcam by default, if yours does not have a SD card, please reach us for replacement.**

For the first time boot up, M4 dashcam will ask you to format the SD card, please press OK BUTTON **OK** to process the format then the camera will start recording automatically.

If you consider the provided SD card's capacity is too small, you can upgrade it with a larger one from Amazon. This M4 dashcam can support up to 256GB memory, but it should be a SAMSUNG or PNY Class 10, U3 speed Micro SD card. We recommend you search

**B09WB1857W** on Amazon. Or use the Amazon App or your cellphone camera to scan to code to purchase the larger capacity SD card for M4dashcam storage extending.



## MUST READ



Before you attempt to connect your cellphone with the M4 dashcam, please LONG-PRESS the **UP DIRECTION BUTTON**  to turn on the wifi, when you successfully turn on the WiFi module of the camera, it will give out a 'beep' sound and the screen will display the WiFi Name and Password of the M4 dashcam, please simply join the hotspot with your cellphone:

WiFi Name: **CarDVR-M4-\*\*\*\***

Default Password: **12345678**



If you need to use the 24-hour parking monitoring function, you can get a Type C hardwire kit through our ongoing promotion. Please email or text us via email address or WhatsApp.

Or buy separately at the link:  
<https://www.amazon.com/dp/B0CYBNV82R>

OPTIONAL



### Regarding WiFi disconnecting issue for Carplay / Android Auto users:

This is because by default, the mobile phone prioritizes the connection with Carplay or Android Auto, making it challenging to establish a connection with the camera. To successfully connect the camera, please follow these steps:

1. Disable your mobile phone's Bluetooth.
2. Disconnect from any existing WiFi connections.
3. Turn off your car and ensure your mobile phone is no longer linked to Carplay or Android Auto.
4. Restart your car and then connect the camera with your phone.

Generally, it's advisable to maintain the priority connection with Carplay or Android Auto. The dash cam will continue recording automatically without needing to connect to your cellphone's WiFi, functioning as long as it has a power source.

## READ BEFORE USE


### THINGS YOU NEED TO KNOW

Please read before using it to get a better experience.



#### 1 The dashcam can not power on even with the power cable connected.

(1) Please pay attention to the indicator light of the dashcam, if the indicator light is constant red but the camera can not boot up, you can try any of the following methods to get the camera to work.

- Use the needle that comes with the package pushing the reset(R) key, then the camera will boot up again.
- Disconnect the power cable and hold the POWER BUTTON  for 10 seconds, then the camera will boot up and reconnect the power cable to get it to work.



(2) Please connect the dashcam to other TYPE C charger to see if it can power on, if the camera can power on with other charger, that indicates the charger is defective, please contact us for replacement charger.

#### 2 Unable to use the navigation or Music app while driving?

Once you connect to CarDVR-M4-\*\*\*\* WiFi, it will say 'No internet connection', which is fine and please select 'Keep trying wifi'. If you want to use the phone network,(for music, navigation etc.) just disconnect the camera WiFi. **The camera will continue to record even when it is not connected to your cellphone. In other words, you don't need to connect to the dash cam WiFi all the time.**

## READ BEFORE USE

---

---

### **3** Nothing display from rear camera even have it connected to the main camera?

Please make sure the socket is completely inserted into the main camera, if you have not completely insert the plug to the main camera, the rear image will show black screen, **contact us** if it still not working.

---

### **4** It drained my battery after parking for a whole night.

This issue happens when your car does not cut the power supply after you shut down the car (while other models do). So we recommend you replace the dashcam charger with another port from your car that can cut the power after your key is off. **If there is no ideal port from your car, please contact us for a hardwire kit as this kit can cut the power to the dash cam when it detects the battery voltage drop and retain enough power for the next start.**

---

### **5** Not recording for 24 hours even with hardwire kit connected.

When the voltage of your car's battery drops, the hardwire will cut off the power supply of the M4 dashcam to ensure that you can start the ignition the next time you enter the car again. This is the reason why you find the M4 dashcam can not record all the time. In other words, because your car's battery capacity is limited, the recording time that the M4 dashcam can record after parking is fixed. For ordinary cars, their battery capacity can support the M4 dashcam recording for more than 10 hours. If you drive every day, you won't have to worry about this issue.




---

**6** Camera freezing or Only recording for a few seconds.

If the camera comes freezing, lagging, or only recording video for a few seconds then power off, this is the SD card issue, NOT the camera issue. Please format the SD card to have a try (**see page 20**). If the issue remains after you get the SD card formatted, please replace the SD card with a new one as it may reach its life span after so many times erasing and loading data by the M4 dashcam. If you have no idea how to get resolve, please feel free to contact us.


---

**7** Some of video files are missing or Can't find videos from app.

- (1) M4 dashcam has a Loop Recording function, it will delete the oldest files and record newer files when the SD card is full except for the locked video files. **We recommend you single press MENU BUTTON  to lock the video manually when an event happens in case the event does not trigger the Gravity Sensor from locking.**
- (2) For the event video lock by you manually or by the Gravity Sensor, it will be saved in the folder named 'Locked', please pay attention to that as you can not find the event videos from normal recording folder.

---

**8** Buttons are unresponsive, can't call up the menu.

M4 dashcam is programmed to be unable to operate the menu while the M4 dashcam is recording, in case the video is damaged while you are operating the menu. When you want to operate the menu and find the buttons have no response, please check if the camera is recording, if so, please press  stop recording first, it is not a quality issue. **If you are using the cellphone app to operate the setting menu, just click the 'Camera Settings' with no hassle as the app will manage to do it.**

## PACKAGE CONTENT

### PACKAGE CONTENT



M4 Dashcam



64GB SD Card Included



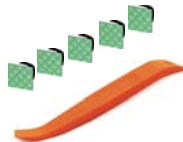
Suction Mount



Car Charger



Rear Camera



Wiring Tools



User Manual



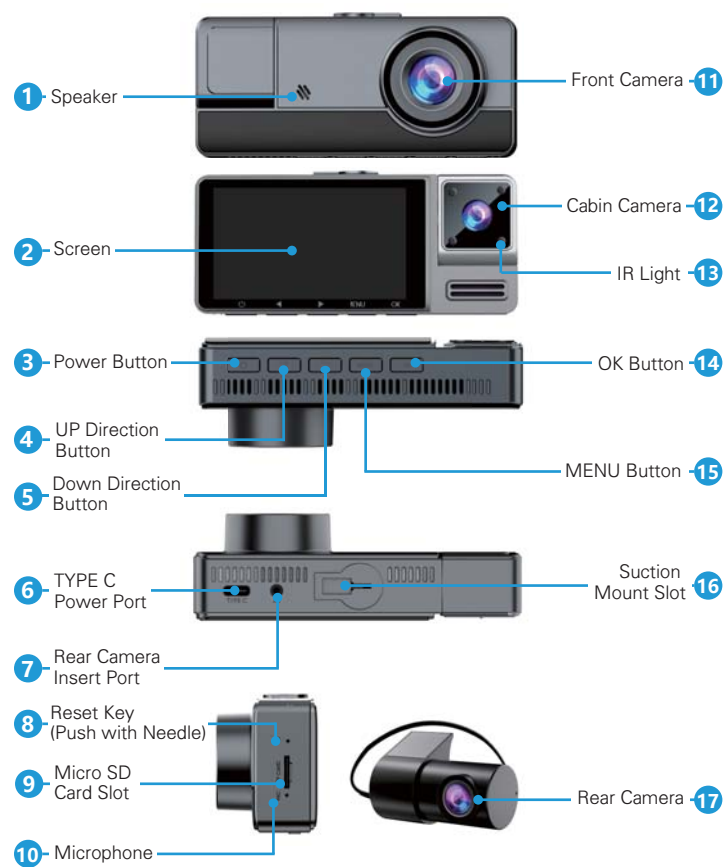
Warranty Card



1. 64GB SD card is included in Package, if you consider the provided card's capacity is too small, you can getting a larger one from Amazon. We suggest inserting a SAMSUNG / PNY Class 10, U3 speed micro SD card(up to 256GB) into this M4 dashcam. To make a purchase, please simply search for **B09WB1857W** on Amazon.





2. If there is no cigarette lighter port in your car, please email us [support@iceskyus.com](mailto:support@iceskyus.com) to get a USB C cable from us.

**PRODUCT OVERVIEW**



## BUTTONS FUNCTION

### UNDERSTANDING BUTTONS

	<p><b>POWER BUTTON</b></p> <ol style="list-style-type: none"><li>1. Long Press- to Turn ON/OFF the camera.</li><li>2. Press Once- to Turn ON/OFF the screen.</li></ol>
	<p> <b>UP DIRECTION BUTTON</b></p> <p><b>LONG-PRESS to turn ON/OFF the WiFi Module of M4 Dashcam</b></p> <ol style="list-style-type: none"><li>1. Press Once- to Scroll Up while operating with menu settings.</li><li>2. Press Once- to switch the screen display from 3 lens (front/inside rear) while recording.</li><li>3. Press Once- to Scroll to Previous video file while in playback mode.</li><li>4. Press Once- to Fast rewind(2X, 4X) while playing video in playback mode.</li></ol>
	<p><b>DOWN DIRECTION</b></p> <ol style="list-style-type: none"><li>1. Press Once- to Scroll down while operating with menu settings.</li><li>2. Press Once- to Turn on/off sound recording</li><li>3. Press Once- to Scroll to Next video file while in playback mode.</li><li>4. Press Once- to Fast forward (2X, 4X) while playing video in playback mode.</li></ol>
	<p><b>MENU BUTTON</b></p> <ol style="list-style-type: none"><li>1. Press Once- to enter the setting video menu when not recording.</li><li>2. Press Once- to Lock the current video while the camera is recording.</li><li>3. Long Press- to Switch the recording mode to video playback mode.</li><li>4. Press Twice- to enter the system setting menu when not recording.</li></ol>

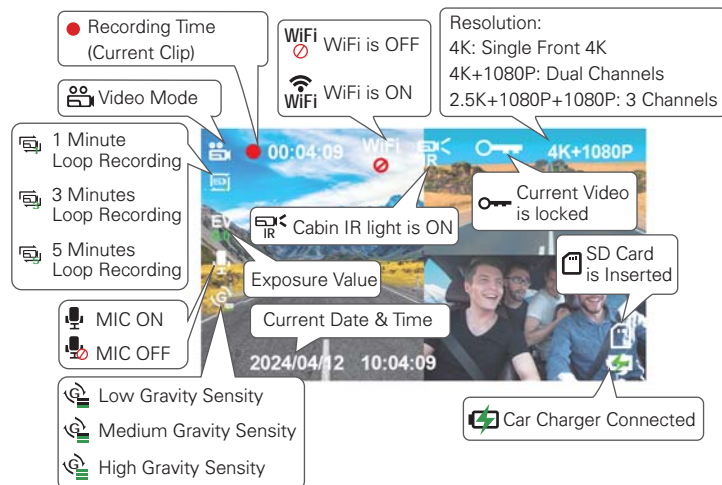
## BUTTONS & SCREEN

OK

### OK BUTTON

1. Press Once - to Enter / Confirm Specific Settings while in Menu Settings.
2. Press Once - to Start/Stop Video Recording in video mode.
4. Press Once - to Play/Pause Current Video while in Play Mode.




### SCREEN OVERVIEW



In this video recording mode, you can press OK BUTTON **OK** to stop recording first, then long press MENU BUTTON **MENU** to enter video playback mode to review the videos recorded.

## INDICATOR & INSTALLTION

### INDICATOR MEANINGS

-  **Red & Blue Flashing**  
M4 dashcam is now recording videos.
-  **Constant Red**  
M4 dashcam is NOT recording videos.
-  **Indicator Off**  
M4 dashcam is now powered off.



### POWER REQUIREMENT

As this M4 dashcam is a 3-channel system with a high resolution of up to 1440P-2.5K, along with WiFi function, it requires a more powerful power source to drive this system(compared to a normal 5V/1A). **We strongly recommend you use the car charger that comes with this package.** If your car does not have a cigarette lighter port, please **contact us** to get a TYPE C cable and insert it into a 5V/2A USB port. If you use a normal 5V/1A port to power this camera, issues may occur.

### INSTALLATION



Our default settings of the M4 dashcam allows you to use the camera as soon as you get it without modifying any settings. You can also scan the code on the right to watch the installation video guidance for your M4 dashcam(will redirect to YouTube).

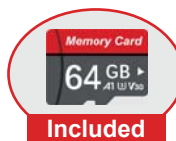


## SD CARD INSTALLATION

### SD Card Installation / Removal

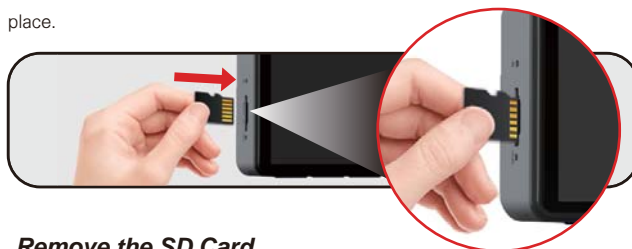
1

A 64GB SD card is included in this package. The SD card is already inserted into the M4 dashcam by default, so you can skip this step directly. If yours does not have a SD card, please **reach us** for a SD card replacement.



#### ***Install the SD Card***

Turn off the M4 before inserting the SD card. Then place the side with metal contact facing the Screen side of the camera. Then insert the memory card halfway in first. Then use the card needle (package included) to push the card all the way inward until you hear a click sound then the SD card is locked in place.



#### ***Remove the SD Card***

To remove the SD card, please gently push its edge inward until it clicks first, after it pops out, please pull it out of the slot.



Never remove the SD card while the camera is on, the camera will shut down immediately and may cause video damage.

Please note that every SD card has its life span, when your M4 keeps turning on/off frequently and the videos are not saved, your SD card may reach its life span, please replace a new SD card.

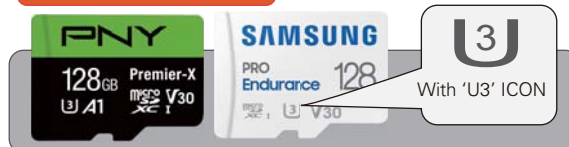
## MEMORY EXTENDING / FORMAT REMINDER



### MEMORY EXTENDING

If you consider the provided SD card's capacity is too small, you can extend the memory with a larger one from Amazon. This M4 dashcam can support up to 256GB memory. We recommend you select a SAMSUNG or PNY brand, Class 10, U3 speed Micro SD card. We recommend you search **B09WB1857W** on Amazon.

#### RECOMMENDED



### FORMAT REMINDER

For the SD card inserted into the M4 dashcam for the first time(or the first time boot up you just take it out from the package), the M4 dashcam will ask you to format the SD card, please press OK BUTTON **OK** then the M4 dashcam will process the format itself and start recording automatically.

Use this card for the first time  
Please format the card

OK



## MEMORY ERROR & MOUNT INSTALL



### MEMORY ERROR

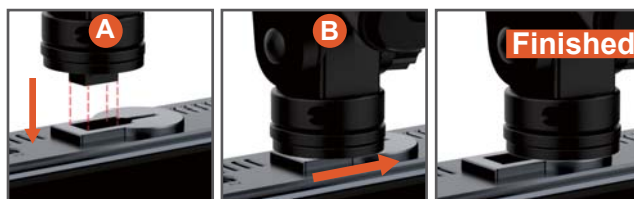
- For most situation, the M4 dashcam will auto start recording after it finishes the SD card format. But if you insert a defective SD card or a low speed card which can not reach Class 10 U3 speed, the M4 dashcam will prompt 'Memory error'. Please replace a SD card which is working well and can reach Class 10, U3 speed.
- If you have no idea how to get this error resolved, please **contact us** for help:

*Our emial: [support@iceskyus.com](mailto:support@iceskyus.com)*

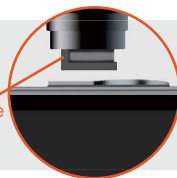
Memory error

### Suction Mount Installation

2



Align the tenon of the suction mount to the slot of the M4 dashcam, Insert the tenon part completely into the port, and then push right to the end ( please pay attention to the direction of the tenon).



## Mount the Main Camera

### Mount the M4 Dashcam to the Front Windscreen 3

#### 1 Installation Area

Most of our customers choose to install their M4 dashcam next to the rear view mirror and close to the passenger side. Park your car in a safe and well-lit area before you start the installation.



#### Clean the Area

Please use wet & dry tissues to repeatedly wipe the place you choose to install the recorder in order to clean the dust particles on the windshield and the grease evaporated.

#### 2 Lock it in Place

Remove the protective plastic film from the suction cup before installing it. Fixed the suction cup: **Press and hold the cup firmly attached to the windshield to ensure that the air between the windshield and the cup is expelled**, then lock the knob clockwise to lock it in place.



## REAR CAMERA INSTALLATION

### 3 Connect the Power Cable

Use the power cord to connect the TYPE C Power Port of the product to the car's cigarette lighter socket with the package to run the cable through the A-Pillar. The cigarette lighter port usually is in the glove box of your car. You can use the wiring straps to help you run your cable on the front windscreen.

Stick it on the windscreen, and fasten the wire harness underneath.



#### **FOR YOUR SAFETY**

- For the car has side curtain airbags, please run the cable along the window carefully. Please make sure your cable won't obstruct the airbags take effect.

## INSTALL THE REAR CAMERA

### Rear Camera Installation

4



Please note that the rear camera of this M4 dashcam is not waterproof / dustproof, so it can be only installed on the back windscreen of your car.

If you don't need the rear camera, you can skip this step and the M4 dash cam will record front video at 4K resolution and record inside video at 1080P resolution.

#### 1 Installation Area

Please install the rear camera in the upper middle of the rear windshield in the car. This will make it easier to arrange the wiring harness and will not obstruct you from viewing the rear through the rearview mirror.



#### Clean the Area

Please use wet & dry tissues to repeatedly wipe the place you choose to install the recorder in order to clean the dust particles on the windshield and the grease evaporated.

## INSTALL REAR CAMERA

### 2 Stick it in Place

The rear camera mounting method is sticking 3M glue. We have stuck the glue on the stand by factory default, remove the film of the glue then you can stick it in the mounting area you desire. **Please keep the sticky pad upward, otherwise, the rear videos you record will be upside down.**



### 3 Connect the Rear Camera to Main Camera

Run the rear camera cable as in the picture below, the rear camera cable will go through the C-pillar, B-pillar, and A-pillar of the car body, and finally reach the main lens. You can use the included crowbar to tuck the wire into the interior sealing strip to hide the wire. The wiring straps to help you run your cable on the rear windscreen.



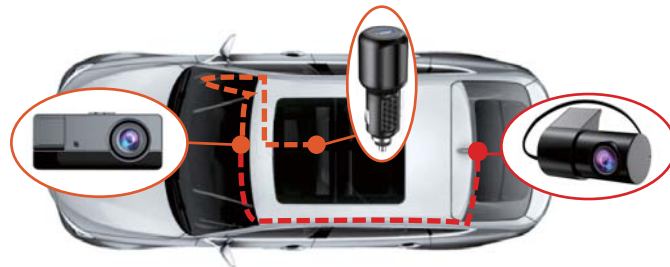
**i** Please fully insert the rear camera socket into the 'AV' port from the main camera to ensure the videos from rear camera can be received.



## INSTALL REAR CAMERA

### 4 Wiring Effect

Congratulations, you have now completed the wiring of the M4 dashcam. Please refer to the picture below to confirm again whether your wiring is correct.



## Final Adjustment and Test

5

### Start the Ignition

Start the ignition of your car, and see if the M4 dash cam boots up normally. For the first time boot up the SD card format a reminder will prompt up, just press OK BUTTON **OK**, and this M4 dashcam will format the SD card itself and start recording. You will see the front, inside, and rear images shown on the screen simultaneously.



If your M4 dashcam can not power on normally or have 'Memory error' issue, please contact us for help:

**Our email:**  
[support@iceskyus.com](mailto:support@iceskyus.com)



OUR WhatsApp

## FINAL ADJUSTMENT

### ***Adjust the angle***

Adjust the angle of the front, inside, and rear camera to make sure that the camera can capture the full image and is not obstructed by window tint or any other objects.



### ***Date & Time Settings***

After you successfully connect your cellphone with the dashcam via WiFi, M4 dashcam will auto sync the time with your cellphone, and you don't need to set the time via the dash cam yourself.

### ***Adjust the Screen Display Mode***

M4 dashcam will show the videos from 3 channels by default, you can Single

Press the UP DIRECTION BUTTON  to change the screen to display the front camera only, the inside camera only, and the rear camera only.

## WIFI CONNECTION

---

### **Format SD Card Regularly**

To keep the SD card clean and smooth operation, we recommend you format the SD card via the dashcam app every 2 weeks. Steps are below:

- > Power on the M4 dash cam and press OK BUTTON **OK** to stop recording
- > Double Press MENU BUTTON **MENU** to enter system setting menu
- > Scroll down until you find the option 'Format', press **OK** to process

## WIFI CONNECTION



## THINGS YOU HAVE TO KNOW

### **WiFi Function**

M4 dashcam has built-in WiFi module, so you can use your mobile phone to wirelessly pair with the camera through the WiFi, and instantly get the video from the dash cam. Apart from that, you can easily watch the live feed, view, download and share videos with family and friends. In summary, just like you connect a Bluetooth speaker to your smartphone for wireless music playback, the dash cam uses a WiFi signal (instead of Bluetooth) to pair your smartphone to the M4 dashcam in the same way.



## WIFI CONNECTION

### ***Does not Support Monitor Remotely***

M4 dashcam does NOT support remote monitor. Because the WiFi signal will not be turned on when the car is not powered on and the valid range of WiFi is 10FT. Therefore, the remote monitor function cannot be realized if both above conditions are not met.

### ***Does not Have to Connect Phone All the Time***

M4 dashcam will auto start recording and save the videos in the SD card once it is powered on. You don't have to connect the M4 dashcam all the time while you are driving. In reverse, you are not able to use the navigation or listen to the music from online app if you connect the M4 dashcam with your cellphone. So you don't have to connect the M4 dashcam with your cellphone all the time.

### **Download 'Peztio' app**

**1**

Please scan the QR code of the relevant version below to download the APP and install it.



Or search for 'Peztio' in App Store or Google Play Store to download and install it on your phone.




### ***Remain Power Supply***

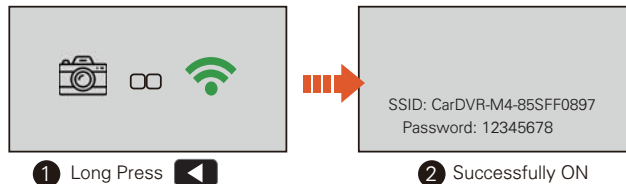
Please remain the M4 connected to the power while you are operating the WiFi function, otherwise the dash cam WiFi will become offline.

## WIFI CONNECTION

### Turn on Wifi Module of M4 Dashcam

2


Before connect the M4 dashcam with your cellphone, please Long-Press the UP DIRECTION KEY  to the WiFi module of the camera, then the screen will display the WiFi information after the WiFi is successfully turned on.



### Authorize App Permissions

3

Just open the "Peztio" app you've downloaded, and authorize the permissions as below. When opening the app for the first time, please make sure to authorize the App with album, location, WLAN & cellular data, otherwise the Peztio app won't work correctly.

 **Reminder for iOS Users**

If you get these notification windows while using the APP, ensure you choose "Allow" or "OK"

1 Allow "Peztio" to use your location?

Location permission is required for accessing the WiFi information, and then improving the connection experience of Dashcam for iOS13 and above systems users.

Allow Once

Allow While Using App

Don't Allow

2 "Peztio" would like to find and connect to devices on your local network.

Local Network permission is required for accessing the WiFi, and then improving the connection experience of Dashcam for iOS14 and above systems users.

Don't Allow

OK

3 "Peztio" Would Like to Access Your Photos

Photos permission is required for accessing the pictures and videos saved in Photos.

Select Photos...

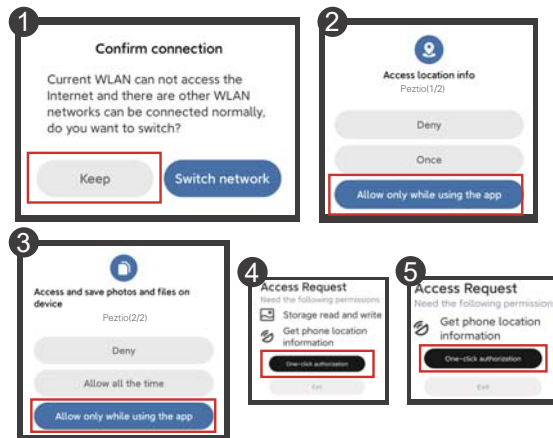
Allow Access to All Photos

Don't Allow



### Reminder for Android Users

Please choose "Keep", "Allow" or "Authorization" when these prompts appear.



## Connect to the WiFi

4

When you successfully turn on the app, just simply press  
'Add Camera' > 'Next' > 'Add Camera'

1 2 3

Then it will jump to the WiFi setting of your cellphone. Simply join the WiFi of M4 dashcam by going into your iPhone or Android  
Settings > WiFi > **CarDVR-M4-\*\*\*\***

4

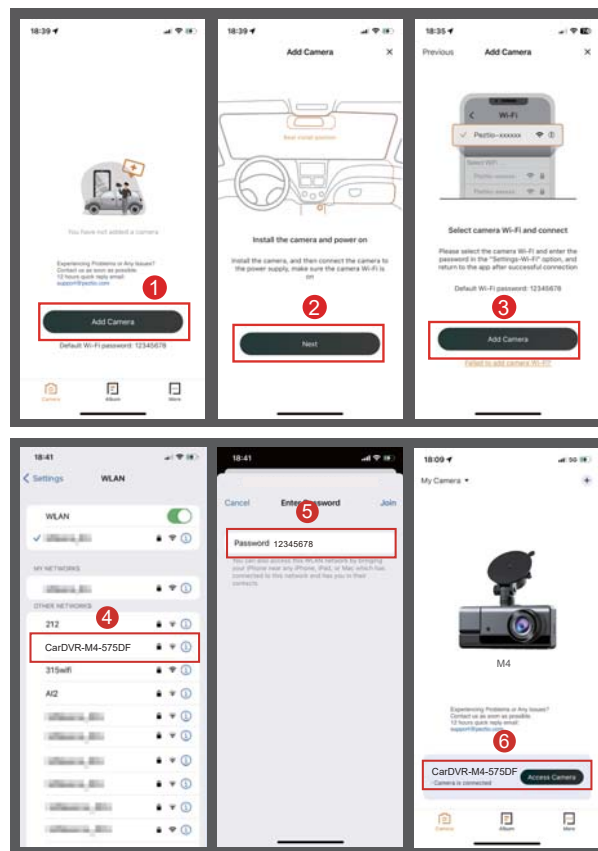
Then enter the default password: **12345678**. And join the network.

5

Press 'Access Camera' to enter the live video of M4 dashcam

6

## WIFI CONNECTION



## WIFI CONNECTION



### Keep Trying Wi-Fi

Once you connect to CarDVR-M4-\*\* WiFi, it will say 'No internet connection', which is fine and please select 'Keep trying wifi'. If you want to use the phone network, just disconnect the camera WiFi. The camera will continue to record even when there is no WiFi connected.

The Wi-Fi network  
"CarDVR-M4-5dfce"  
does not appear to be  
connected to the Internet

Do you want to temporarily use  
cellular data?

[Use Cellular Data](#)

[Keep Trying Wi-Fi](#)

### Disconnecting issue for Carplay / Andriod Auto users:

This is because by default, the mobile phone prioritizes the connection with Carplay or Android Auto, making it challenging to establish a connection with the camera. To successfully connect the camera, please follow these steps:

1. Disable your mobile phone's Bluetooth.
2. Disconnect from any existing WiFi connections.
3. Turn off your car and ensure your mobile phone is no longer linked to Carplay or Android Auto.
4. Restart your car and then connect the camera with your phone.

Generally, it's advisable to maintain the priority connection with Carplay or Android Auto. The dash cam will continue recording automatically without needing to connect to your cellphone's WiFi, functioning as long as it has a power source.

## WIFI CONNECTION

### Start to Use App Functions

5

Once you cellphone successfully join the WiFi hotspot of M4 dashcam, please simply get back to the 'Peztio' App, then the app will take seconds to identify your dashcam information and get it finished, once it is finished, you will see your dash cam name and able to click 'Access Camera' to start data transfer with your camera.



#### WATCH GUIDE VIDEO

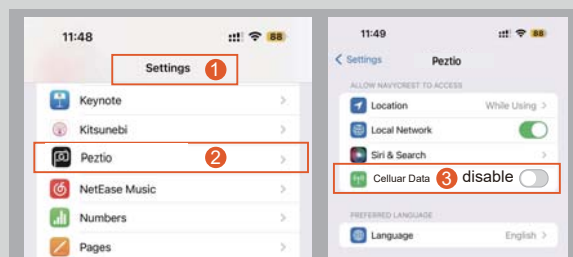
Please scan the code to watch the M4 Dashcam WiFi connection video



#### CAN'T SEE PREVIEW VIDEO?

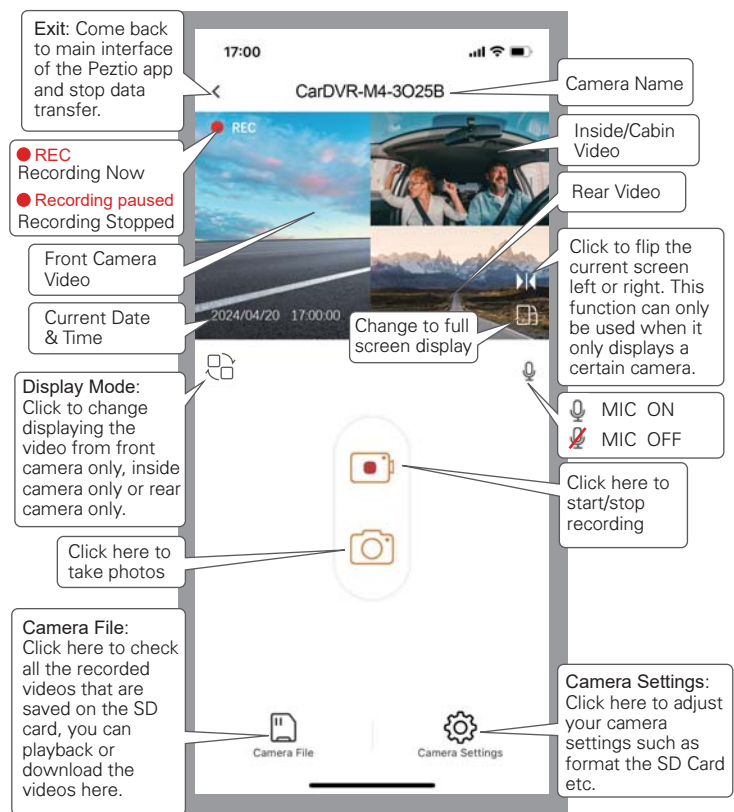
The cellular data will cause the live feed not to be viewed. Please following the steps below to get it fixed

1. Go to the 'settings for your iphone'
2. scroll down until you find out the 'peztio'
3. click in peztio and disable the cellular data options



## APP INTRODUCTION

### Live Video Interface 1

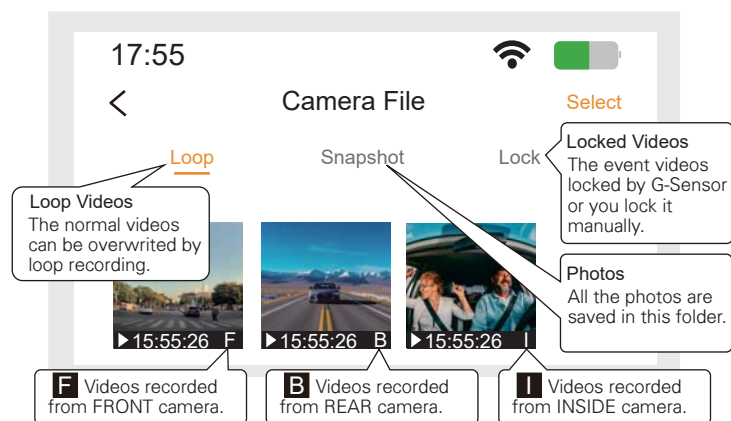


## APP INTRODUCTION

### Camera File Interface

2

By clicking the 'Camera File' from the last interface, you can playback and download the videos the M4 dashcam recorded. **Please note that different videos are saved in the different folders, if you want to check the accident videos or the video you locked, please click the 'lock' folder to check.**



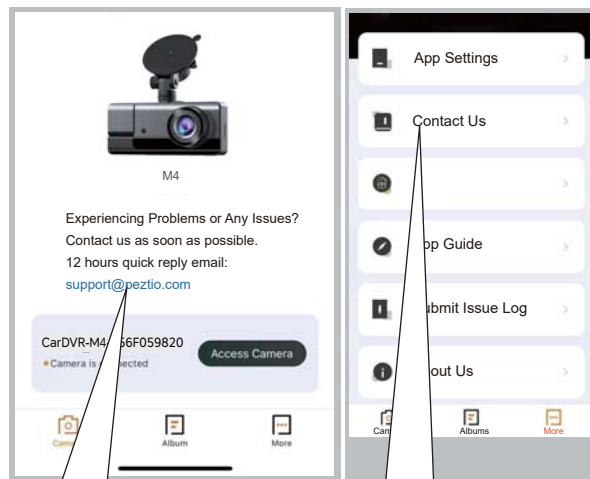
### FOR YOUR BEST EXPERIENCE

- (1) Please download the videos if you need a more detailed and smoothly video, the preview resolution is at only 480P. For a real 2.5K 1440P front video experience, please use a monitor that support 2.5K resolution.
- (2) The downloaded videos / photos will be saved in your local albums.



### Get in Touch with Our Support From the App **3**

If you have any issues or need from our after-sale support, there are 2 ways for you to get in touch with us in 'Peztio' app. Typically we will reply to you in 24 hours on working days!



You can click this email address from the main interface of 'Peztio' app, then it will jump to the email app of your cellphone.

You can also click the 'Contact us' from the 'More' page. Then it will jump to the email app of your cellphone.

## PLAYBACK VIDEOS

### PLAYBACK VIDEOS

There are 3 methods for you to choose playing back the videos.

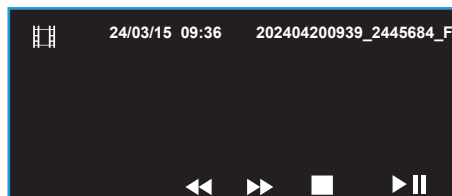
#### Playback Videos from App **1**

As mentioned in the previous chapter, you can play back videos by entering the Camera File interface of Peztio App. I won't go into details here. For details, please check pages 27 to 28 of this manual.

#### Playback Videos from Camera Playback Mode **2**

You can also playback the videos by entering the playback mode of M4 dash cam also, please following the steps below:

- 1 Power on the M4 dashcam.
- 2 Single-Press OK BUTTON **OK** to stop recording.
- 3 Long-Press MENU BUTTON **MENU** to enter the video playback



#### Playback Mode Operation



Play/Pause the videos.



Change to previous/next

## PLAYBACK VIDEOS

### Playback Videos via Your PC

3

- 1** You can remove the SD card from M4 dashcam and insert it to computer directly (if your computer doesn't have memory slot, then you need to purchase a 'Micro SD Card to USB Adapter').



- 2** After you insert the SD card to your computer, please look for the added flash drive. You should be able to see drive named 'CarDVR-M4'



- 3** When you locate the added flash drive 'CarDVR-M4', double click in it, then you will see a folder named 'Novatek', there are 4 folders in it:



EMR = Accident(locked)Videos

Front = Front Camera Videos

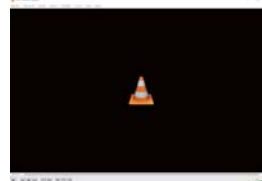
Incar = Inside Camera Videos

Rear = Rear Camera Videos





#### RECOMMEND VIDEO PLAYER

The video format of M4 dashcam maybe not supported by your computer original video player. We recommend you download a VLC Player to play the videos. You can get it free at [www.videolan.org](http://www.videolan.org)



## VIDEO SETTINGS

### VIDEO MODE SETTINGS

To adjust your video mode setting, please power on the M4 dashcam first, then press OK BUTTON  to stop recording, then Single-Press MENU BUTTON  to enter the video setting menu, the following are the options from video setting menu.

#### Resolution

Choose the resolution of 3 lens you want according to your needs. **When M4 dashcam is in dual channel mode, it will auto change to 4K+1080P resolution.**

- 2.5K+1080P+1080P (Default)
- 1080P+1080P+1080P

#### Loop Recording

The duration of each recorded video will be saved in the normal video folder according to the loop recording time you set. When the capacity of the normal video folder reaches 70% of the total, new loop recording files will automatically overwrite original loop recording files. After this function is enabled, the video file will automatically overwrite the loop, so as not to stop recording during the driving process.


- 1 minute (Default)
- 3 minutes
- 5 minutes



This function can free you from deleting the video manually once the SD card is full. However, this function may fail when you inserted a low-speed card into the dash cam, please insert a Class 10 U3 speed Micro SD card (not larger than 256GB) to make sure this function can work properly.

## VIDEO SETTINGS

### Record Audio

The M4 dashcam supports voice recording, you can activate it on camera settings to record the voice or turn it off to prevent the voice from being recorded. You can also single press  to turn on/off this microphone right away.

- On (Default)
- Off

### G Sensor (Collision Sensing)

G-Sensor is a 3-axis impact gravitational accelerometer which is designed to detect physical and gravitational forces on the camera.

**While Video is Being Recorded:** In the event when G-Sensor is triggered due to physical or gravitational impact force on the camera, the current loop cycle length of video file will be locked so it will NOT be deleted by loop cycle function.

- Off
- Low (DEFAULT)
- Medium
- High

### Parking Monitor

This feature is designed to record the collision events that happen to your car when you are away. When your car is hit by someone and collision is detected based on your preset sensitivity, the camera will turn ON automatically >and then START recording for the 30s protected video > then power off again, this video will not be deleted by the loop recording function.

- Off (DEFAULT)
- On (Recommended)



This function doesn't require a hardwire kit because it is powered by the inside battery of the dashcam. Meanwhile, please make sure the Gravity Sensing is turned on because it is trigger by Gravity Sensing.

### Exposure

This feature allows you to adjust the brightness of a captured image.

- From +2.0 to -2.0

## VIDEO SETTINGS

---

### IR Light Setting

This function is to control the IR night of the inside camera, if you turn it on, it keeps on all the time, if you turn it to auto, it will auto on while it detects the light is weak.

- Auto (DEFAULT)
- On
- Off

### Rear Camera Mirror

With this option you can flip the rear camera video left and right

- Off (DEFAULT)
- On

### WiFi

This feature will allow you to turn WiFi broadcast ON from the camera so you can connect your phone with M4 dashcam to access videos, photos and settings. You can turn the WiFi On from this menu or Long-Press UP BUTTON



to turn on the WiFi.

- Off (DEFAULT)
- On

WIFI Name/ SSID	CarDVR-M4-****
WIFI Password	12345678

### Cabin Camera Record

For your privacy needs, you can disable the cabin camera from recording, this time M4 dashcam will record front videos at 4K and record rear videos at 1080P.

- On (DEFAULT)
- Off

### Cabin Camera Mirror

With this option you can flip the cabin camera video left and right

- Off (DEFAULT)
- On

## PARKING MODE



### TYPE C HARDWIRE KIT REQUIRED

This feature becomes accessible within camera settings only when the camera is powered by the hardwire kit. To enable this function, you'll require a Type C hardwire kit, available for separate purchase at <https://www.amazon.com/dp/B0CYBNV82R>

Alternatively, you can contact us to obtain a free hardwire kit for connecting to the M4 by joining the promotion.

### STOP RECORDING EVEN WITH HARDWIRE KIT?

When the voltage of your battery drops, the hardwire will cut off the power supply of the M4 dashcam to ensure that you can start the ignition the next time you enter the car (low voltage protection). So this stop recording issue is a matter of the capacity of your car battery, not a camera malfunction.

This feature is designed to work while your car is parked. After installation of dedicated hardwire kit and connected, you can turn on this function on video mode menu. When you turn off your car, the camera will record 1 fps / 3fps per second video until you turn on the car again. It's extremely saving power and capacity as the normal video is 30 frames per second while this time-lapse is just 1 or 3 frames.

- Off (DEFAULT)
- Time Lapse 1 fps (Recommend)
- Time Lapse 3 fps

## VIDEO SETTINGS

---

### Parking Mode Timing

You can set a duration for parking mode, when the time is out, the camera will power off and go to collision sensing mode(when it detects a collision, the dash cam will power on again and record a 1 min video)


- Off (default, the dash cam will stay on parking mode till you start the car again)
- 12 hours
- 24 hours
- 48 hours

### Time Stamp

You can choose whether to put a logo or date watermark on the video.

- Off
- Date and Time (Default)

## SYSTEM SETTINGS

In video settings menu, you can press MENU BUTTON  once more to enter the camera system setting menu.

### Contact Technical Support

If you need support from us, just contact us via the information from this content shows, we will reply to you in 24 hours in working days.

### Date / Time

You can set the date & time here manually, but typically this M4 dashcam will auto sync the date & time with your cellphone after the cellphone is connected to this M4 dashcam.



## SYSTEM SETTINGS

### Language

You can set the language of the M4 dashcam show.

### Frequency

Here you should choose the frequency accordingly to your power supply specification used in your country based on your geographical location.

- 60 Hz (Default)
- 50 Hz

### Screen Saver Settings

If you don't press any button for a period of the preset time, the screen will auto-off but the recording will go on. You can also turn off this function to let the screen always be on.

- Off (Screen Always On)
- After 30 seconds
- After 1 minute
- After 2 minutes

### Format

This feature will allow you to format inserted memory card, all the data will be deleted. You can format the SD via the dash cam by operation the system menu or via the Camera Settings Menu from Peztio app (see page 27).

### Beep Sound

This feature allows you to turn ON/OFF camera button's beep sound

- Off
- On DEFAULT

## SYSTEM SETTINGS

---

### Default Settings

Here you can restore all the settings to factory default settings.






***Resetting the dash cam settings & reboot the dash cam are different.***

Reboot the camera hardware.

When your dash cam becomes freezing and no buttons are responsive, rebooting the hardware may help. Please use the needle that came with the package or yours to push the reset hole of the dash cam, this will force a hardware restart, but will keep your previous personal settings.

Setting the camera firmware to default setting.

When you want to restore all settings to factory defaults, you can make the use system setting menu to achieve:

- >Press  to stop recording
- >Double-Press  to enter system setting
- >Scroll down and find the 'Default Setting' option,
- >Press  to start the process.

## SPECIFICATIONS

### SPECIFICATIONS

<b>Display Screen</b>	3 inch IPS Screen
<b>G-sensor</b>	Built-in
<b>Resolution</b>	Single Front Mode: 4K/2160P 2 Channel Mode: 4K Front + 1080P Inside 4K Front + 1080P Rear 3 Channel Mode: 2.5K+1080P+1080P 1080P+1080P+1080P
<b>Sensor</b>	6 glass, 170 Degree Wide Angel Lens
<b>Language</b>	English, German, Japanese, etc
<b>Video Format</b>	MP4
<b>Picture Format</b>	JPEG
<b>Power interface</b>	5V/2A
<b>Working Temperature</b>	Working temperature -4°F to 167°F (-20 C to 75°C).

---

## ***Frequently Asked Question***

---

### **1 Can't View Live video on Peztio App?**

The cellular data will cause the live feed not to be viewed. Please disable the "Peztio" cellular data of your cellphone.

**Setting → Peztio → Disable the "Cellular Data"**

---

### **2 Do I have to connect the M4 dashcam WiFi each time I drive in order to record the videos?**

No, the dash cam will automatically record without connecting to your cellphone wifi. Camera will record as long as it has power.

---

### **3 Encountering issues connecting the camera while using Carplay/Android Auto?**

This is because by default, the mobile phone prioritizes the connection with Carplay or Android Auto, making it challenging to establish a connection with the camera. To successfully connect the camera, please follow these steps:

1. Disable your mobile phone's Bluetooth.
2. Disconnect from any existing WiFi connections.
3. Turn off your car and ensure your mobile phone is no longer linked to Carplay or Android Auto.
4. Restart your car and then connect the camera with your phone.

Generally, it's advisable to maintain the priority connection with Carplay or Android Auto. The dash cam will continue recording automatically without needing to connect to your cellphone's WiFi, functioning as long as it has a power source.


#### 4 How to use the parking mode function?

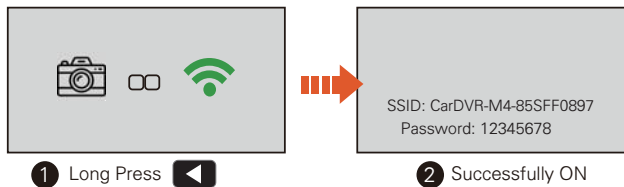
To enable the 24 hours parking monitoring function on the M4 dashcam, you will require a Type C hardwire kit (NOT included in the package). You can find the recommended kit on Amazon by searching for . If you prefer to get the FREE hardwire kit from us by joining the promotion, please feel free to reach out to us via WhatsApp or email.

#### 5 The camera does not power off even when the car is off and drains my battery?

This issue happens when your car does not cut the power supply after you shut down the car (while other models do). So we recommend you replace the dashcam charger with another port from your car that can cut the power after your key is off. **If there is no ideal port from your car, please contact us for a hardwire kit as this kit can cut the power to the dash cam when it detects the battery voltage drop and retain enough power for the next start.**

#### 6 Can not search for the WiFi of the dash cam.

Please long-Press the  to turn on the WiFi before you connect the dash cam otherwise, you are not able to search the WiFi of this M4 dashcam, when the WiFi is successfully turned on, the WiFi information will show on the screen, just join the WiFi with the information.



## FAQ

---

### **7 Loop recording doesn't work.**

(1) Please check your SD card version, this loop recording function requires a Class 10, U3 SD card within 256GB, otherwise your videos can't be saved or overwrite.

(2) Make sure your loop recording is on and format your SD card, then set the G-Sensor at low sensitivity, your SD card may have too much locked videos and loop recording can't overwrite with these videos.

### **8 Not Showing rear video?**

If the rear video is not shown on the display even if you have inserted the plug of the rear camera into the main camera, please push the plug into the socket harder as this problem is caused by the incomplete insertion of the rear plug. If you are sure the plug is firmly inserted in to the main camera and the issue is still, please contact us immediately.

### **9 The video playback on Peztio APP is blurry.**

Due to the limitation of WiFi transmission rate, the videos you watch is only 480P if you don't download the files. So we suggest you download the videos to your phone and watch them in local album. The downloaded video resolution can be up to 2.5K 1440P.

### **10 Can't use navigation / listen music with online app while driving?**

Once you connect to CarDVR-M4-\*\*\*\* WiFi, it will say 'No internet connection', which is fine and please select 'Keep trying wifi'. If you want to use the phone network,(for music, navigation etc.) just disconnect the camera WiFi. **The camera will continue to record even when it is not connected to your cellphone. In other words, you don't need to connect to the dash cam WiFi all the time.**

## Sincere Thanks

Dear customer,

Thanks for choosing our Icesky dashcam. As you are the most valuable customer of us, we provide 12 months warranty & life time customer care for you. **Please regist**

- **your product on our website (following the steps below)** and we will provide the warranty service and customer care for you.

- **If you have any problem about our dash cam, please contact us via the email or whatsapp.** Typically we will reply in 12 hours and we will try our best to help, thank you!

Sincerely,

**Icesky**

### REGIST YOUR 12 MONTH WARRANTY (CUSTOMER CARE)



#### REGISTER WITHIN THE FIRST 30 DAYS

Scan this QR Code Using your iPhone or Andriod's Camera to start your Product Registration.

Or visit the link using mobile or PC/MAC:  
[peztio.com/apps/product-registration](http://peztio.com/apps/product-registration)



Scan to download  
the 'Peztio' APP

## ***HEY, FIND US HERE***

OUR EMAIL ADDRESS:  
[support@iceskyus.com](mailto:support@iceskyus.com)

Scan the code with your  
cellphone and you can  
email us directly!



OUR WhatsApp

Scan the code with your  
WhatsApp and chat with  
our support right now!



Typically we will reply to you in 24 hours on working day!



## FCC WARNING

This device complies with part 15 of the FCC Rules. Operation is subject to the following two conditions: (1) this device may not cause harmful interference, and (2) this device must accept any interference received, including interference that may cause undesired operation.

Any changes or modifications not expressly approved by the party responsible for compliance could void the user's authority to operate the equipment.

NOTE: This equipment has been tested and found to comply with the limits for a Class B digital device, pursuant to Part 15 of the FCC Rules. These limits are designed to provide reasonable protection against harmful interference in a residential installation. This equipment generates, uses and can radiate radio frequency energy and, if not installed and used in accordance with the instructions, may cause harmful interference to radio communications. However, there is no guarantee that interference will not occur in a particular installation. If this equipment does cause harmful interference to radio or television reception, which can be determined by turning the equipment off and on, the user is encouraged to try to correct the interference by one or more of the following measures:

- Reorient or relocate the receiving antenna.
- Increase the separation between the equipment and receiver.
- Connect the equipment into an outlet on a circuit different from that to which the receiver is connected.
- Consult the dealer or an experienced radio/TV technician for help.

To maintain compliance with FCC's RF Exposure guidelines, This equipment should be installed and operated with minimum 20cm distance between the radiator and your body: Use only the supplied antenna.