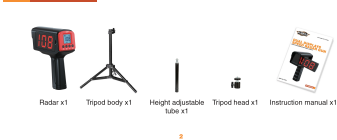




## PRODUCT FEATURES

1. Patented dual display: Operable side bright LED display can be easily seen from a distance for single person use. Back LCD display can be easily seen by a coachholder.
  2. Easy to use: The speed radar gun is simple to use. Just hold up the gun, turn on and aim the target in direct to get an accurate speed reading without any cosine effect.
  3. Comes with a large tripod: It can be used by a single person. Unique hands-free operation design can automatically measure baseball pitching speed and bat swing speed.
  4. Speed recall feature: Stores the last 10 recorded speeds.
  5. Speed range/accuracy: 30 to 150mph (5 to 198km/h), +/- 1 mph/kph accuracy.
- SS Mode: 3 to 150 mph (5 to 199 kph)**  
**MS Mode: 25 to 150 mph (40 to 199kph)**

## PARTS LIST



## FUNCTION INTRODUCTION



1. Sensor
2. LED Display
3. Handlight
4. LCD Display
5. Function Buttons
6. Battery Cover

### a. ON/OFF

Press "ON/OFF" button one time to turn on the radar. LCD screens displays. Hold 3 seconds to turn off the radar.

### b. KPH/MPH

Press "KPH/MPH" button to choose the speed units. Default unit KPH.

### c. SS/MS

Press "SS/MS" button to choose speed mode. See more details as below.

### d. REC

Press "REC" to see last 10 recorded speeds.

**Note:** If the radar doesn't measure any speeds for 5 minutes, it will enter into sleeping mode to save batteries usage and be turned off automatically.

## HOW TO SELECT SS/MS

1. SS and MS stands for Still Speed mode and Move Speed mode. Choose the correct mode to suit your sports.

### SS MODE/MS MODE:

1. Baseball pitching speed.
2. Hitting baseball speed.
3. Baseball bat swing speed.
4. Soccer ball shooting speed.
5. Ice hockey puck shooting speed.
6. Lacrosse ball shooting speed.

### CHOOSE BETWEEN SS MODE AND MS MODE

SS Mode: Still Speed Mode 3 to 150 mph (5 to 199 kph)

MS Mode: Move Speed Mode 25 to 150 mph (40 to 199kph)

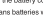
For example, baseball pitch speed.

Choose SS mode or MS mode according to your need.

To measure children's low speed below 25mph/40kph, select SS mode. Radar sensors will become more sensitive to measuring speed. So make sure you use this radar in a good and quiet place to avoid it getting other irrelevant speeds like fans, wind, etc.

If your speed is above 25mph/40kph, select MS mode. The radar does not pick up other irrelevant speeds, such as fans, wind, etc. So you can use it in most places.

## BATTERY INSTALLATION

1. The radar gun needs to use 6pcs AA batteries (not included). Please use screw driver to open the battery cover and then install 6pcs AA batteries according to the positive and negative electrode mark inside the battery bin. Then please close the battery cover and tighten the screws.
2. When LCD displays show , that means batteries will run out. Please change batteries immediately.

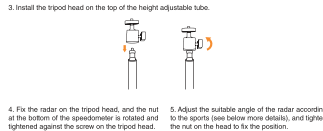
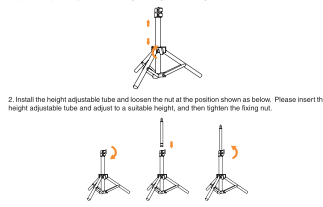


## SAFE BATTERY USAGE

1. Use alkaline batteries for best performance and longer life.
2. Use only the type battery recommended for the unit.
3. Batteries should be replaced only by an adult.
4. Insert batteries with the correct polarity (+ and -).
5. Do not mix old and new batteries.
6. Do not mix alkaline, standard(carbon-zinc), or rechargeable (nickel-cadmium) batteries.
7. Do not short-circuit batteries.
8. When not used for an extended time, remove batteries to prevent possible leakage and damage to the unit.
9. Do not mix rechargeable and non-rechargeable batteries.
10. Rechargeable batteries are to be removed from the before charging.
11. Rechargeable batteries are to be recharged only under adult supervision.
12. Do not recharge non-rechargeable batteries.
13. Exhausted batteries are to be removed from the unit.
14. Do not dispose of batteries in fire as they may leak or explode.

## HOW TO ASSEMBLE THE TRIPOD

1. Open the tripod body to a suitable angle and tighten the fixing nut.



## NOTE

The speed radar will measure the relative speed of a target as it approaches the radar gun. If the target is in a direct line with the radar gun the measured speed will be exact. As the angle of incidence increase, if you move either right or left of this direct line, the accuracy will decrease. The measured speed will decrease as you move off this centerline.

## BASEBALL PITCHING SPEED 1

### FOR PERSON USE:

1. Please install tripod with radar and open the side LED display. Then place radar behind the target.



### \*ADVISED DISTANCE:

Please place speed radar behind the center of target around 5-7feet. Advised the pitcher to pitch the baseball away about 20-30ft from the net.

## BASEBALL PITCHING SPEED 2

### FOR PERSON USE:

1. Please install tripod with radar and fold the side LED display. Then place radar near to pitchers on the right side and face to target. The pitcher can see his own speeds.



### \*ADVISED DISTANCE:

Please place speed radar to face the center of target within 10 feet. The radar can be placed side by side with the pitcher, away to pitcher to observe the pitching speeds on the side of LED screen.

## HITTING BASEBALL SPEED

1. Please install tripod with radar and open the side LED display. Then place radar behind the target.



### \*ADVISED DISTANCE:

Please place speed radar behind the center of the baseball practice net. It is around 5-7 feet away from the target net. Advised to place batting tee around 20ft away from the net.

## BASEBALL SWING SPEED

### FOR PERSON USE:

1. Please install tripod with radar and open the side LED display.



### \*ADVISED DISTANCE:

Please place speed radar to face the batter's arm joint around 5-7feet away in case your bat hit the radar.