

User manual



Single Din MP5 Car Stereo Player

FCC Compliance

This device complies with Part 15 of the FCC Rules.

Warning: Any changes or modifications to this unit that are not expressly approved by the party responsible for compliance may void the user's authority to operate the equipment.

This transmitter must not be co-located or operated in conjunction with any other antennas or transmitters.


Note: This equipment has been tested and found to comply with the limits for a Class B digital device, as stipulated in Part 15 of the FCC Rules. These limits are established to provide reasonable protection against harmful interference in residential installations.

However, there is no guarantee that interference will not occur in a particular installation.

If this equipment causes harmful interference to radio or television reception, which can be determined by turning the equipment off and on, the user is encouraged to attempt to correct the interference by one or more of the following measures:


1. Adjust or reposition the receiving antenna for optimal performance.
2. Increase the distance between the equipment and the receiver.
Connect the equipment to an outlet on a different circuit from the one to which the receiver is connected.
3. Please consult a dealer or an experienced radio technician for assistance.


【Tips and Warnings】


In order to emphasize the important information of the user manual, special attention should be paid when seeing the label  , which indicates some important warnings and reminders


【Safety Notice】


Read all instructions before installation. It is recommended that the machine be installed by a car audio professional

 This machine is suitable for the vehicle 12V power supply system (the ground wire must be grounded), please do not install the machine in the 24V vehicle, otherwise it will damage the machine.

 Do not repair the power fuse without professional guidance. Improper use of the fuse can cause damage to the machine and cause a fire.

 To avoid violating traffic rules, drivers cannot watch videos while driving and operating machines to avoid unnecessary accidents.

 For the sake of safety and to ensure the normal use of the product, Please invite professionals to install, disassemble or repair the machine to avoid machine damage and accidents.

 Please do not placing this product in a humid environment and water in case causing fire due to electric shock or other unnecessary damage.

**Note: To Prevent Burning The Machine, Do Not Turn On The Power
Until The Power Cord Is Properly Connected!**

【Specification】

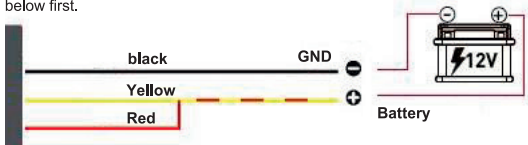
Power Voltage—————12~14.4V DC, Negative Ground

Current —————15A

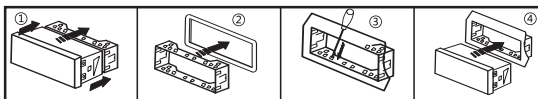
Output Power—————4X45W

【Test】

Before you install the radio into your car, please test the product as the method below first.

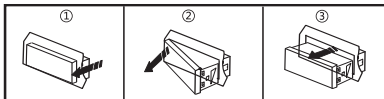


【Installation-single DIN】



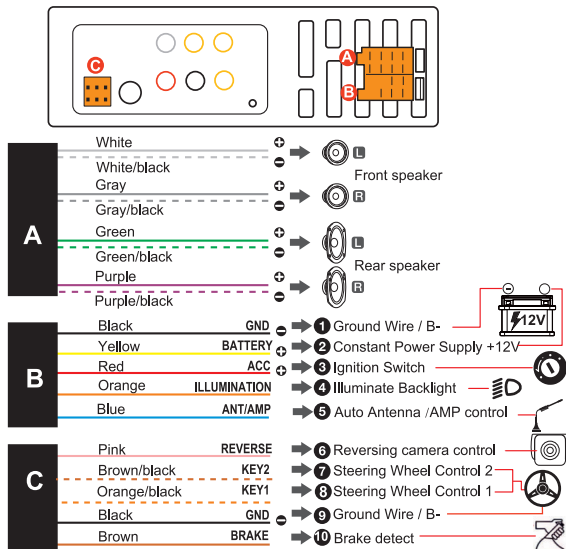
1. Separate the iron frame from the host
2. Insert the iron frame into the car radio installation window
3. Fix the iron frame to the car with a screwdriver.
4. Press the main unit into the iron frame and let the machinesnap into the iron frame.

【Disassembly】



1. Pull one side of the radio out off the installation window.
2. Pull another side of the radio out off the installation window.
3. Remove the radio out.

【Power Harness Description】



-Recommend use the connector in the package.
If you use the connector of your original radio directly,
make sure the function of every wire match the
connector in the package, or it will cause malfunction.



-The unit will be turned on only if the **Yellow**, **Red** and
Black wires are all connected correctly.

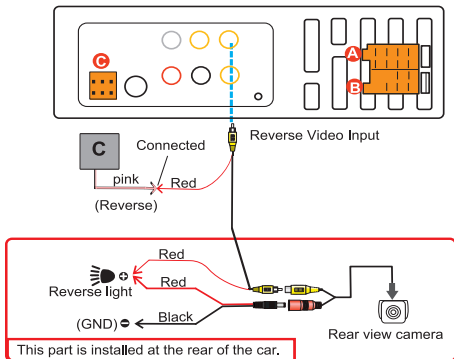


-Please connect the **Yellow** and **Red** wires opposite if
the unit does not have memory function.

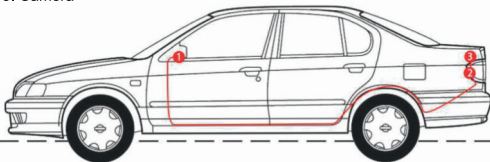
【Rear View Camera Wiring】

When using the rear view reversing function, the system will automatically disconnect the link with the mobile phone, such as calls and music in BT Mode, mobile phone mirroring links, etc., which are all normal

Note: During installation, please connect the reversing cable regardless of whether you use a reversing camera. Failure to do so may affect Wi-Fi and Bluetooth signal performance.

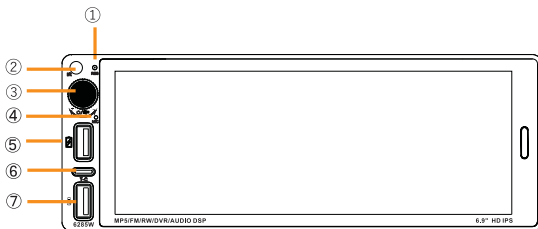


1. Monitor
2. Camera Power Source
3. Camera

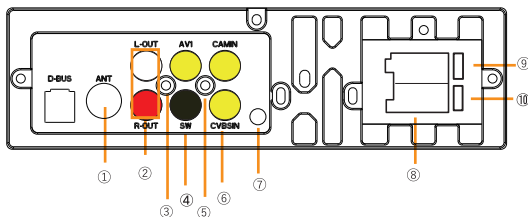


【Interface Description】

(Note: The picture is for reference only, please refer to the actual product)



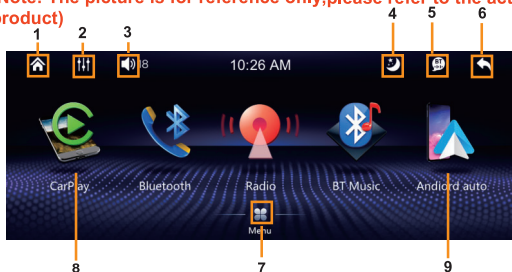
- | | |
|------------------------------|--------------------------|
| 1. Reset | 5. USB |
| 2. IR remote receiver | 6. Type-C USB for charge |
| 3. Power on/off / Mute / Vol | 7. USB for charge |
| 4. Mic | |



- | | |
|----------------------|------------------|
| 1. Radio Antenna | 7. External mic |
| 2. Subwoofer output | 8. cable set A/B |
| 3. AV input | 9. Fuse |
| 4. RCA output | 10. USB for DVR |
| 5. Camera reverse in | |
| 6. AV output | |

【Home Page】

(Note: The picture is for reference only, please refer to the actual product)



1. Home
2. DSP setting
3. Mute/Vol adjust
4. brightness adjust (off/day/night)
5. BT state
6. back
7. Menu
8. Carplay
9. android auto

【BT】

Device Name: "Carplay-BT"

PIN Number: "0000" (If need)

Connection Method:

1. Power on the machine and turn it on.
2. Turn on the BT function on the mobile phone, click Search Device, when the mobile device list searches for the BT device name of the current machine, click the device name to connect it.

If it show "invalid" warning when you use Bluetooth/Mirror function, Please disconnect "Wireless CarPlay / Android auto" function first. (Refer to page 7/8 to check how to disconnect)

【Phone Link】

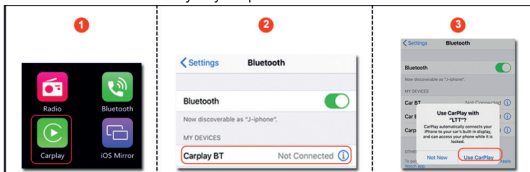
CarPlay (wired & wireless)

Wired connection:

Just connect the USB data cable, and then it will automatically enter the CarPlay interface.

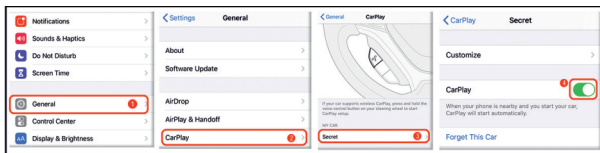
Wireless connection:

1. Turn on the BT and Wifi in your phone.
2. Connect the BT
3. Allow to use CarPlay in your phone



Note:

- The signal is transmitted through wifi, so even turned off BT, Carplay will be transmitted normally.
- When wireless CarPlay is running (CarPlay will still run in the background even if you exit the carplay interface), you cannot use other functions (Bluetooth or Mirror), if you need to use Bluetooth or Mirror functions, please disconnect the carplay as shown below.



The radio will connect wireless CarPlay / Android auto automatically by itself in 2nd time, even though the screen is not in the CarPlay/Android auto page. So please turn off the wireless CarPlay/Android auto first when you use other functions (BT music / Mirror). Or it will show the warning "invalid".

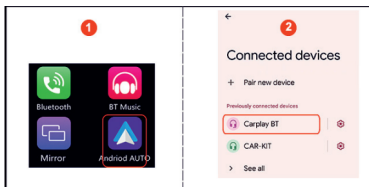
Android Auto (wired & wireless)

Wired connection:

Just connect the USB data cable, and then it will automatically enter the CarPlay interface.

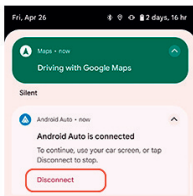
Wireless connection:

1. download and install "Android Auto" APP
2. Turn on the BT and Wifi in your phone.
3. Connect the BT
4. Allow to use android auto



Note:

- The signal is transmitted through wifi, so even turned off BT, android auto will be transmitted normally.
- This feature is not supported in all countries, and "Google Play" services need to be available locally.
- Phone system must be higher than Android 11 when use wireless android auto.
- If you want to disconnect android auto, please turn off the Wifi or disconnect it in menu bar below.



Mirror link

For i-phone:

1. Click on the icon "**Mirror**" first.
2. Plug in the USB cable to your phone.
3. Allow to use Mirror



For Android phone:

1. Click on the icon "**Mirror**" first.
2. Scan the QR code to download , install & turn on the "Mirror" APP
(The first time use)
3. Plug in the USB cable to your phone.
4. Allow to use Mirror

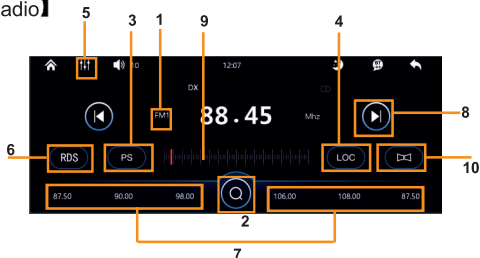


Note:

Whether you use i-phone or android phone, please confirm click the icon "**Mirror**" first.

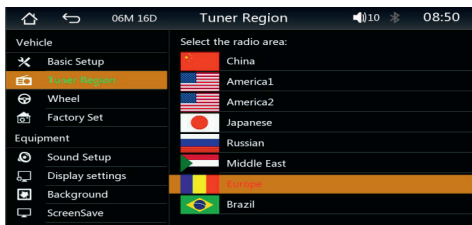
If it show "invalid" warning when you use Bluetooth/Mirror function,
Please disconnect "Wireless CarPlay / Android auto" function first.
(Refer to page 7/8 to check how to disconnect)

【Radio】



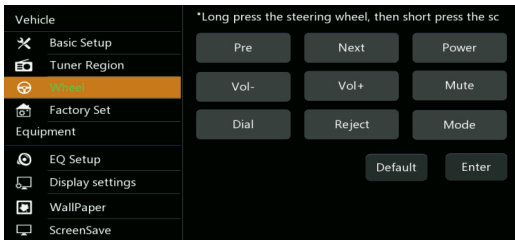
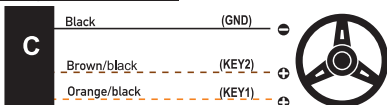
1. FM/AM Band switching, FM1-FM2-FM3-AM1-AM2.
2. Automatically search and store full-band radio stations.
3. Randomly save radio stations.
4. LOC/DX: Long-range/short-range broadcast.
5. EQ sound effect setting interface.
6. RDS function (AF/TA/PTY).
7. Pre-stored stations, Can store 30 radio stations. When you need to listen to a certain fixed station, just click it.
8. ⏮/⏭: Short press to automatically search for the next station and play .
9. Adjust the cursor to manually search for radio stations.
10. Loud on/off

Radio area:



【Steering Wheel Control】

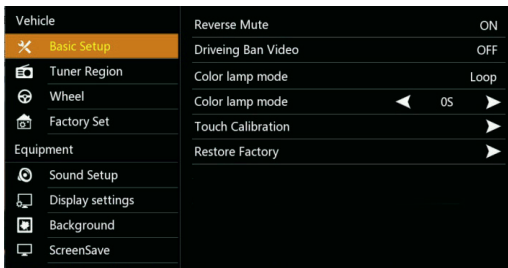
For Steering Wheel with button



Learning Method:

1. Long press the function key on the steering wheel,
2. click the desired function key on the car screen. At this time, the key on the screen will be always on, indicating that the learning is successful.
3. Then learn the second button in the same way.
4. Finally, press the confirm button to complete the study.
5. When the operation error needs to be re-learned, just press the reset button and then re-learn.

【Backlight color adjust】



Setting—basic setup—Color lamp mode:

- Red -green -blue-cyan-purple-yellow-white-cycle.
- Time to switch the color: 1~30s.

TROUBLESHOOTING-1

Problem	Cause / Solution
No power	<ul style="list-style-type: none">• Confirm the voltage is 12V ;• Switch ignition key to "ACC"• Check the fuse• Confirm yellow, red & black wires have been connected correctly
No memory	<ul style="list-style-type: none">• Reverse the yellow and red wires• The yellow and red wires are connected together
Automatic shut-down	<ul style="list-style-type: none">• The blue cable is connected to the power cable of the unit.• The voltage is unstable.
USB/SD cannot be loaded	<ul style="list-style-type: none">• Confirm the Disk is FAT32 format
There is noise	<ul style="list-style-type: none">• The original speaker power is too small.• The speaker cable is grounded.
No sound	<ul style="list-style-type: none">• Confirm the speaker cables connected correctly.• Confirm the unused speaker wires were sealed with insulating tape individually.• Only use speakers with 4 ohm impedance.

TROUBLESHOOTING-2

Problem	Cause / Solution
Radio signal is weak / search the station automatically by itself	<ul style="list-style-type: none">• Confirm the radio area is correct for your country(setting-Tuner region)• adjust the radio broadcast to "LOC"• Turn off AF/TA (RDS) function
Reversing camera does not display	<ul style="list-style-type: none">• Pink color wire connect in wrong way. make sure you use the connector in package & connect the pink wire correctly.
screen move by itself / cannot touch the screen	<ul style="list-style-type: none">• Remove the screen protector• Calibration screen (Setup—Basic setup—Calibration screen)
cannot connected BT / disconnected randomly	<ul style="list-style-type: none">• Restore Factory Mode & try to connect BT name "Carplay-BT"
show "invalid" when click the BT /mirror icon	<ul style="list-style-type: none">• The radio is connecting carplay/android auto by BT.Please disconnect the wifi to stop the carplay & click the BT icon again.

Made in China



FCC Warning

This device complies with part 15 of the FCC Rules. Operation is subject to the following two conditions: (1) This device may not cause harmful interference, and (2) this device must accept any interference received, including interference that may cause undesired operation.

Any Changes or modifications not expressly approved by the party responsible for compliance could void the user's authority to operate the equipment.

Note: This equipment has been tested and found to comply with the limits for a Class B digital device, pursuant to part 15 of the FCC Rules. These limits are designed to provide reasonable protection against harmful interference in a residential installation. This equipment generates uses and can radiate radio frequency energy and, if not installed and used in accordance with the instructions, may cause harmful interference to radio communications. However, there is no guarantee that interference will not occur in a particular installation. If this equipment does cause harmful interference to radio or television reception, which can be determined by turning the equipment off and on, the user is encouraged to try to correct the interference by one or more of the following measures:

- Reorient or relocate the receiving antenna.
- Increase the separation between the equipment and receiver.
- Connect the equipment into an outlet on a circuit different from that to which the receiver is connected.
- Consult the dealer or an experienced radio/TV technician for help.

This equipment complies with FCC radiation exposure limits set forth for an uncontrolled environment. This equipment should be installed and operated with minimum distance 20cm between the radiator & your body.