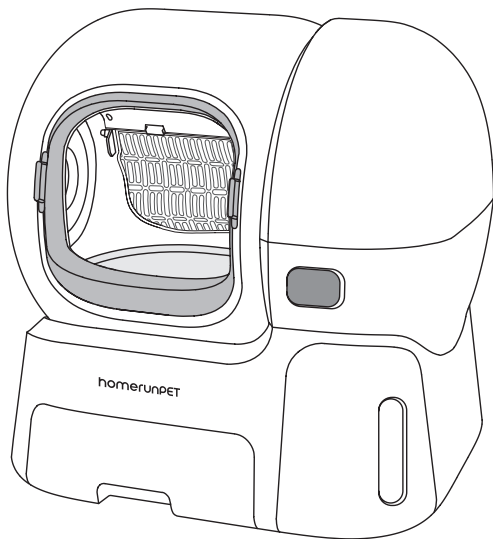


homerunPET




Smart Cat Litter Box

—
CS 106



Read this user guide carefully and keep it safe for future use!

Contents

	SAFETY INSTRUCTIONS	4
01	Packing List	5
02	Product Introduction	6
03	Display Description	8
04	Product Installation	8
05	Network Operations	14
06	Function Operation Introduction	16
07	Accessories Disassembly and Assembly	18
08	Cleaning Maintenance	21
09	Troubleshooting	26
10	Product Specifications	26
11	Warranty	27

SAFETY INSTRUCTIONS

✖ **WARNING: The following instructions apply to this machine, all tools and accessories, and any power supplies and power supply devices required.**

IMPORTANT SAFETY INSTRUCTIONS

WARNING – When using electric appliances, basic precautions should always be followed, including the following:

- Read all the instructions before using the appliance.
- To reduce the risk of injury, close supervision is necessary when an appliance is used near children.
- Do not contact moving parts.
- Only use attachments recommended or sold by the manufacturer.
- Do not use outdoors.
- To disconnect, turn all controls to the off (“O”) position, then remove adaptor from outlet.
- Do not unplug by pulling on cable. To unplug, grasp the adaptor, not the cable.
- Unplug from outlet when not in use and before servicing or cleaning.
- Do not operate any appliance with a damaged cable or adaptor, or after the appliance malfunctions or is dropped or damaged in any manner. Return appliance to the nearest authorized service facility for examination, repair, or electrical or mechanical adjustment.
- To reduce the risk of electrical shock, do not put adaptor or the appliance in water or other liquid. Do not place or store appliance where it can fall or be pulled into a tub or sink.
- Use only the adaptor supplied by the manufacturer. Please install and use the product strictly in accordance with this instruction manual. Do not take any operations outside of this instruction manual to avoid causing machine abnormalities.
- Please install and use the product in strict accordance with this manual, do not take operations other than this manual, so as not to cause machine abnormalities.
- Children under 8 years old are prohibited from operating the machine. Children over 8 years old should use it under adult guidance.
- Please supervise children not to play with this machine as a toy, and do not allow children to perform cleaning and user maintenance without supervision.
- This product is strictly prohibited for use by kittens weighing less than 1.5kg or under 6 months old.
- Do not force your cat to enter the litter box.
- Pregnant and lactating female cats are prohibited from using it to avoid danger of giving birth to kittens or leaving them in the litter bin.
- This product is suitable for clumping cat litter (such as tofu cat litter, mixed cat litter, bentonite cat litter, mineral sand). Do not use non-clumping cat litter; do not add items other than cat litter to the litter bin.
- Please place this product horizontally; do not place other items on the bottom or around it; do not tilt it to avoid leakage of cat litter, inaccurate weight, or machine abnormalities.
- This product has a weight sensing function, please do not place objects around or on top to interfere with the weight.
- Please use it in a cool and dry place indoors, away from fire sources and away from direct sunlight.
- Before turning on the power, please remove the protective pearl cotton inside the bottom and upper cover of the sand bin.
- Before using this product, please put corresponding garbage bags in the sand cleaning drawer and toilet box.
- Please use the original factory power adapter and power cord, otherwise it may cause damage to the machine and other installation hazards.

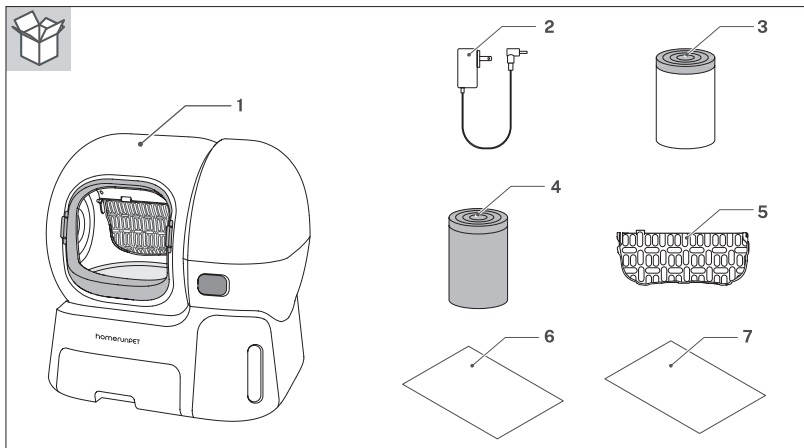
- This product operates in low-voltage mode, but pets biting and damaging the wires may still cause the risk of leakage. Please place the power cord reasonably to avoid accidental damage. Once it is damaged, please stop using it immediately and contact after-sales customer service staff in a timely manner.
- Do not bend or wrap the power cord to prevent it from being damaged by overheating, and ensure that the power cord is properly positioned so that it will not be stepped on, snagged, or pinched.
- If you do not use this product for a long time, please unplug it from the power source.
- Do not touch the power plug or switch with wet hands to prevent electric shock.
- When a product malfunction occurs, please first conduct a self-check according to the troubleshooting table in this manual. If you are unable to determine, please contact customer service personnel.
- Please do not disassemble, modify or repair this product by yourself, otherwise it will be regarded as giving up all warranty and service rights. If you have any problems during use, please contact customer service personnel in time.

SAVE THESE INSTRUCTIONS



The device, its accessories, and packaging should be disposed of in accordance with local and national regulations.

01 Packing List

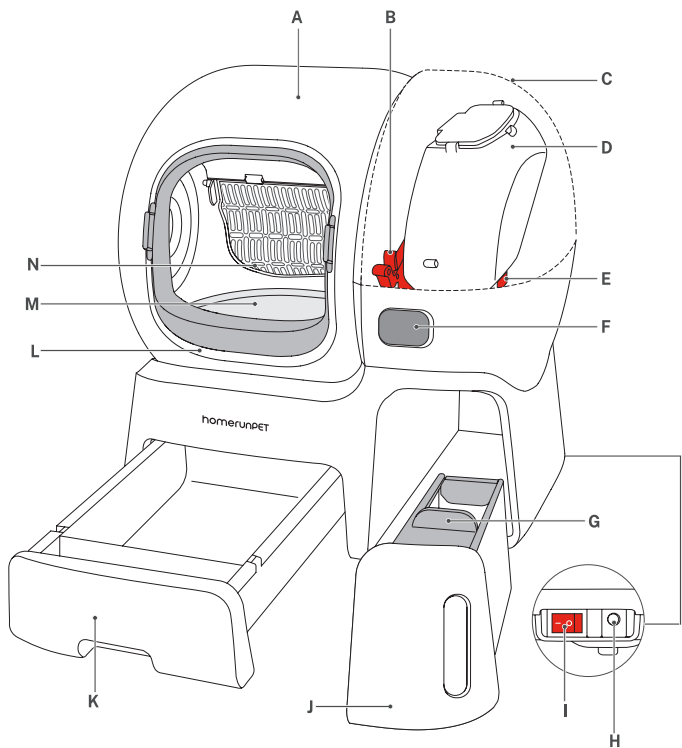


Number Item



- | | |
|---|----------------------|
| 1 | Smart Cat Litter Box |
| 2 | Power Adapter |
| 3 | Poop Bag |
| 4 | Sand Bag |

- | | |
|---|-------------------|
| 5 | Small Hole Filter |
| 6 | Quick Start Guide |
| 7 | User Guide |

02 Product Introduction



* **Filter distinction:** Please pay attention to the comparison of filter hole size, the host factory default assembly of large hole filter.

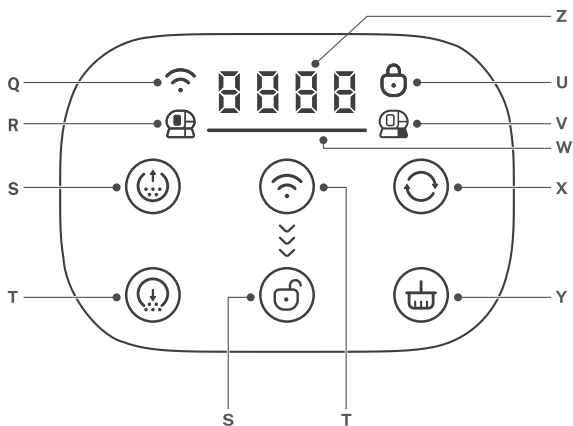
Filter Pattern	Part Name	Suitable for cat litter type
	Large hole filter	Tofu cat litter Mixed cat litter Mineral litter Bentonite
	Small Hole Filter	Mineral sands Bentonite

*** If the use of mineral sand, bentonite cat litter, please replace the filter screen in the machine with "Small Hole Filter" filter effect is better.**










- A** Sand Warehouse
- B** Fixing Ring
- C** Top Cover
- D** Sand Filling Bucket
- E** Button
- F** Screen
- G** Fixed Cover
(Fixed Garbage Bag)
- H** Power Interface

- I** Power Switch
- J** Commode
- K** Cleaning Drawer
- L** Door Frame (Removable)
- M** Anti-stick Pad (Removable)
- N** Large Hole Filter

03 Display Description

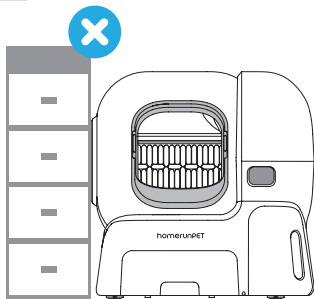


- Q** WiFi Indicator
- R** Door Frame Removal Light:
- S** Entrance Face Up
- T** Empty Cat Litter
- U** Child Lock Light
- V** Poop Box Full Light
- W** Status Light
- X** Pause/Reset
- Y** Clean
- Z** Display Screen

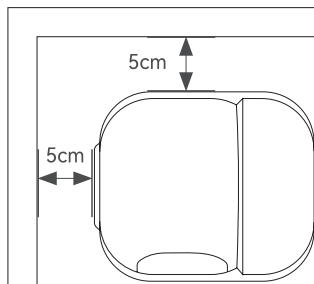
Pilot Lamp	Icon	Status	Status Declaration
Status Light		Green light breathing	The machine automatically clears the countdown
		The green light is running	Machine in operation
		Blue light on	The cat approaches the machine, the cat enters the machine
		Orange light flashing	The machine need to be operated to be restored to normal
		Red light flashing	Machine alarm
WIFI Indicator		Extinguish	The machine is NOT connected to the Internet
		Steady on	The machine is in the networking state, and the networking function can be used normally
		flicker	The machine is in the distribution network state
Child Lock Light		Extinguish	Unlocked: The button can be touched
		Steady on	Locked: The screen is locked and the touch button is unavailable
Poop Box Full Light		Extinguish	The poop box is normal
		Flicker	The poop box is full
Door Frame Removal Light		Extinguish	The door frame has been installed.
		Flicker	1.To emptying cat litter, remove the door frame first. 2.After finishing emptying, reinstall the door frame.

* Child lock key can be operated on the APP or machine to open or close.

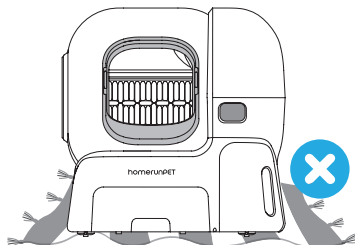
04 Product Installation



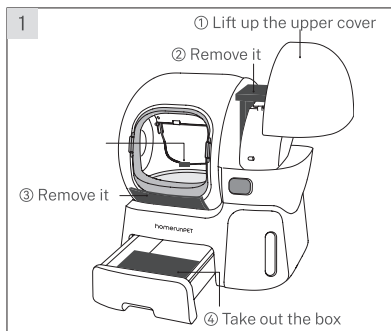
Ensure that the periphery and top of the machine **DO NOT** rely on or place items.



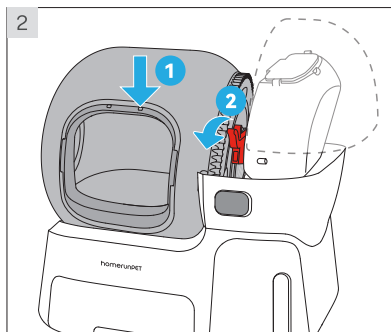
Ensure that the machine is placed more than 5cm away from the wall.



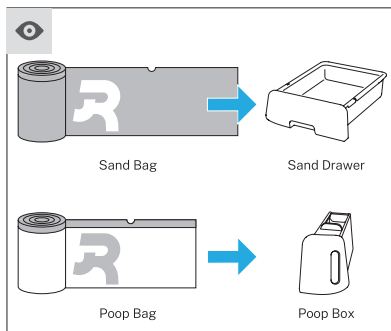
Ensure that the machine is placed on a flat hard floor. **DO NOT** place the machine on carpet.



Take out the pearl cotton

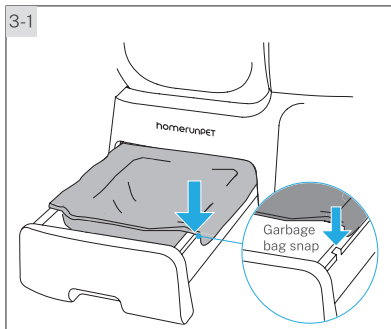


Place the sand bin and buckle the fixing ring



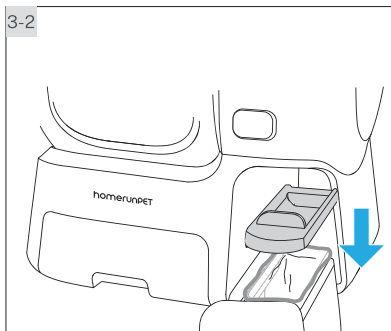
Set garbage bags

3-1



Put on a gray garbage bag ,then place the drawer close to the machine.

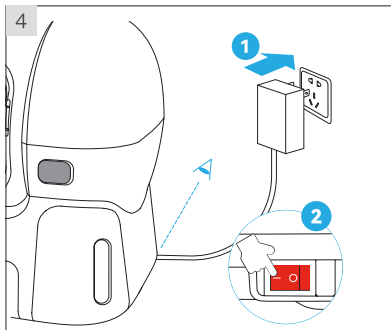
3-2



Remove the lid, then put it on a white garbage bag, and then attach the lid.

* Please open the bag with your hands.

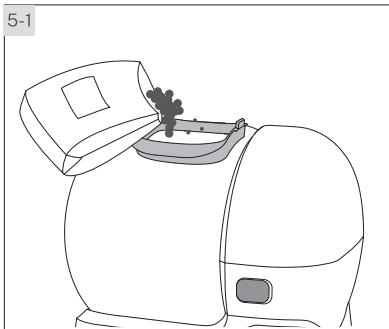
4



Turn on the device

* After start-up, the sand bin will run self-test.

5-1

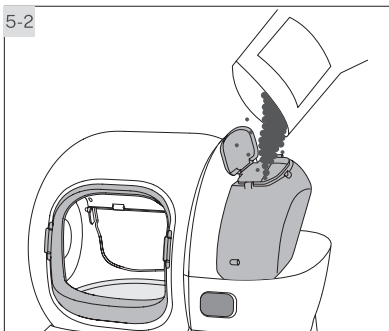


Add cat litter

Add appropriate amount of cat litter into the sand silo.

* After the litter is flattened, the amount of litter must not exceed the MAX line.

5-2

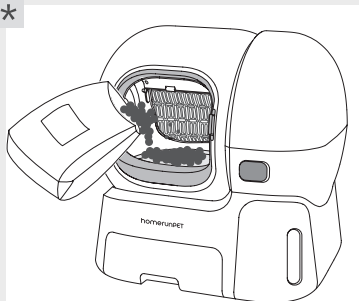



Add cat litter

Add cat litter to the refill bucket.

* When it is indicated that the cat litter balance is insufficient, please add sand in time.

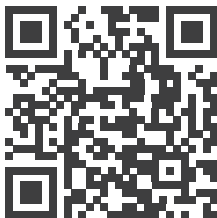
*



* If cat litter is added when entrance to the sand bin is at the initial position, press and hold  after the addition.

05 Network Operations

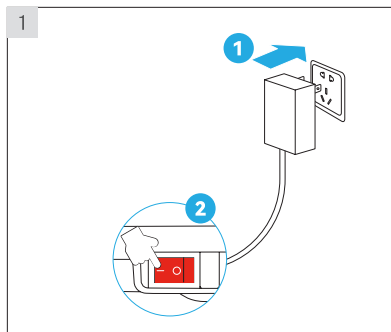
5.1 Install APP



Use your mobile phone to scan the QR code above the code, download and install the APP.

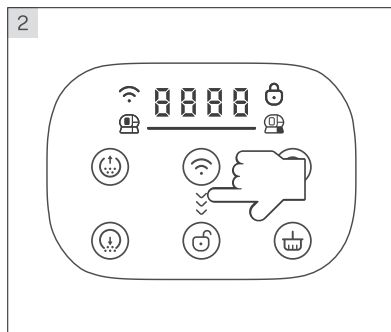
Open the home page of Homan Pet APP, click [+](#), add machines according to the order of the APP and network, and perform related functions on the APP.

06 Function Operation Introduction



On / Standby







After the power is turned on, press the on key to turn on or stand by.



Slide from  to  to unlock or lock the device.

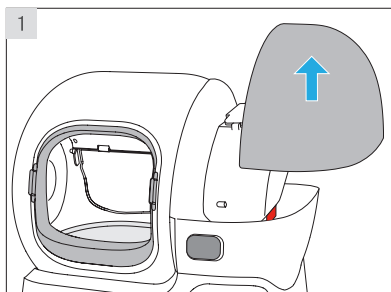


Menu function operation description

Feature	Operation instruction
Clean Now	Press  and the machine will start cleaning after a "di" sound.
Automatic Cleanup (operation on the APP)	After the cat has finished using the toilet and left, the machine automatically cleans up after a period of time. * During the automatic cleaning process, if the cat is detected to approach or enter the sand bin, the machine will immediately stop cleaning, and the countdown to clean the cat litter will start again after the cat leaves.
Empty Cat Litter	1. Remove the door frame; 2. Put the drawer in; 3. Press and hold  The machine automatically dumps all the litter in the litter bin into the litter bin.
Entrance Face Up	Press  Wait until the the entrance to the sand bin to the top and then add appropriate amount of cat litter into the sand silo.
Reset WiFi	Hold down the  for 3s to reconfigure the device.
Factory Reset	Hold down the  and  for 10s to reset the machine.

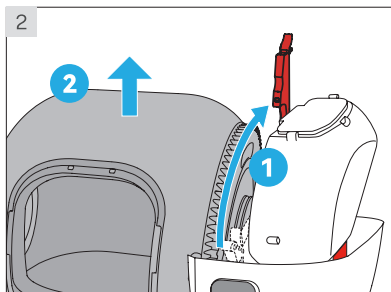
07 Accessories Disassembly and Assembly

7.1 Sand bin disassembly

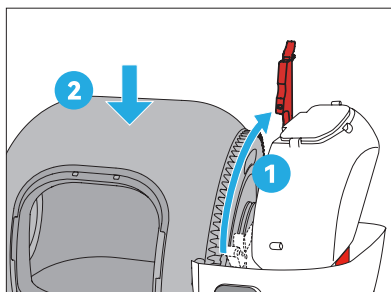


• Disassembly

Open top cover.



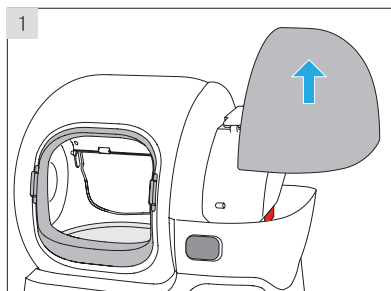
First open the retaining ring, and then lift the sand bin out.



• Install

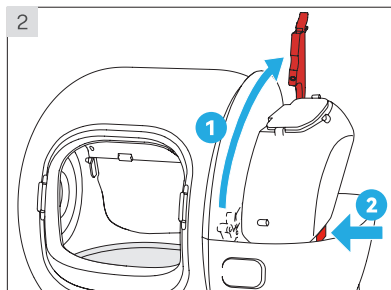
Open the retaining ring and put it back in the sand bin.

7.2 Disassemble the sand bucket

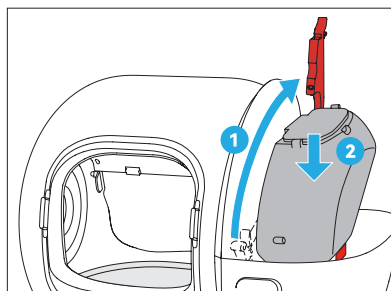


• Disassembly

Open top cover.



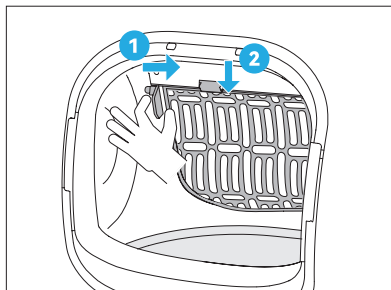
First open the retaining ring, and then press the side button to take out the sand bucket.



• Install

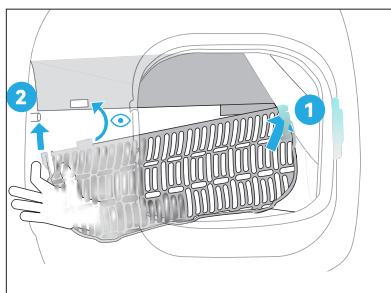
Open the retaining ring, align the button position and press it.

7.3 Filter disassembly



• Disassembly

Pinch the elastic position of the strainer to remove.

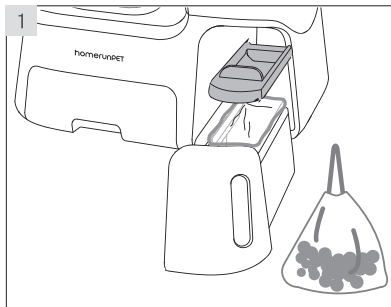


• Install

Align both sides of the filter with the matching holes.

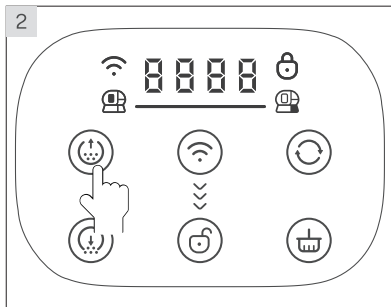
08 Cleaning Maintenance


8.1 Daily cleaning

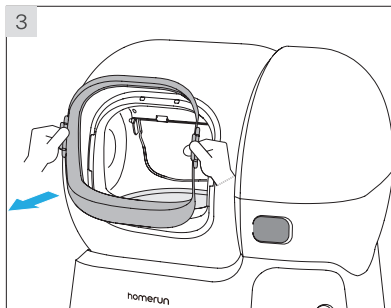


Clean up litter bins.

* Spring and summer weather is hot and humid, single-cat families are recommended to replace the garbage bag at least 2-3 days, autumn and winter can extend the use time, multi-cat families please replace according to the actual use of the family.



Press  to turn the entrance to the sand bin to the top.

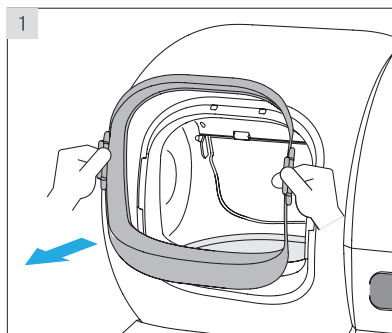


Remove the door frame.

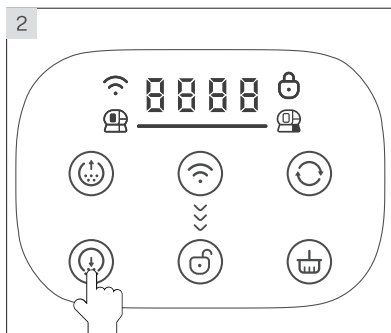



Wipe the plate on the screen.

8.2 Empty cat litter

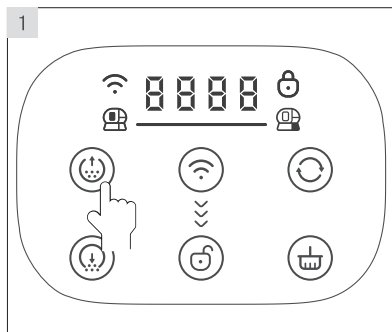


Remove the door frame.

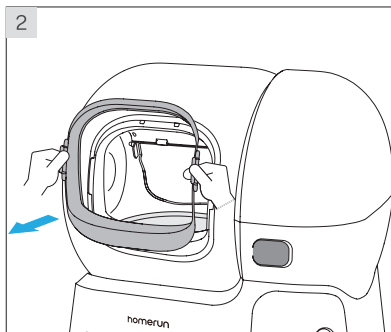


Press and hold  to empty the litter bin.

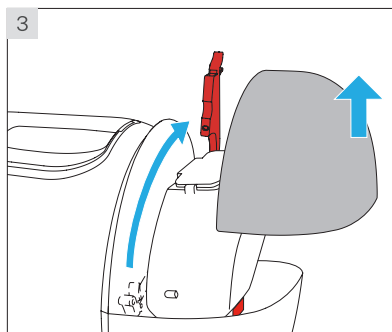
8.3 Machine cleaning



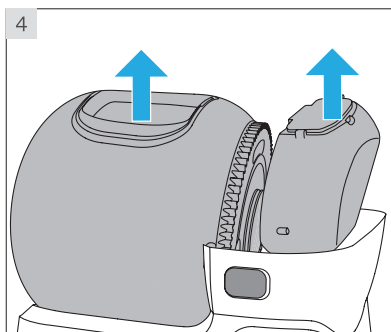
Press ☺ to turn the entrance to the sand bin to the top.



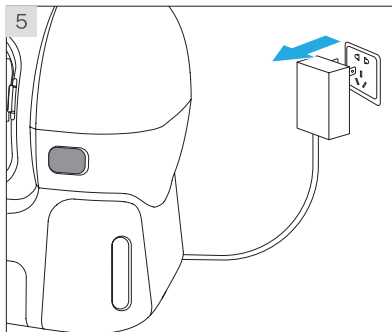
Remove the door frame.



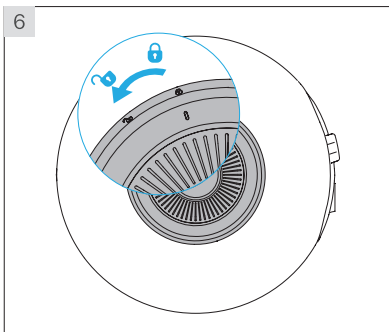
Open top cover and retaining ring.



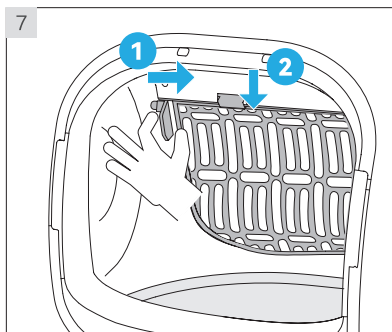
Take out the sand bin and fill the sand bucket.



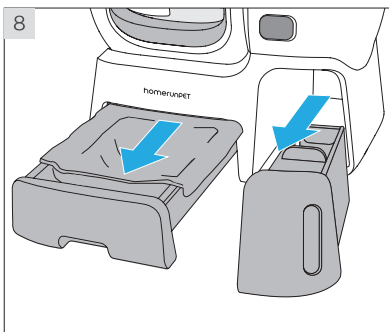
Unplug power.



Remove side cover of sand bin.



Remove the filter: pinch the elastic position of the filter to remove.

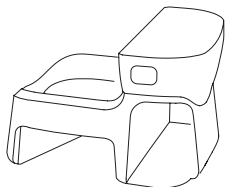


Clean out trash bags from the sanding drawer and bin.

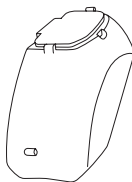


Warm reminder

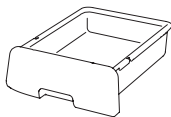
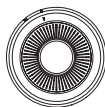
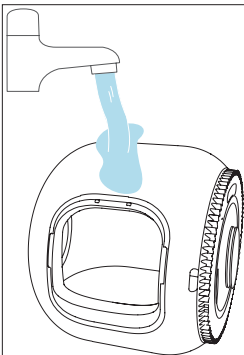
- Do not use water with a temperature higher than 40°C to wash the washable parts. Otherwise, the parts may be deformed and the machine may be affected.
- The base of the main engine has electrical components, do not wash, can be wiped with a wet cloth with neutral cleaning agent after power failure, avoid using alcohol, chemical reagents cleaner.
- After cleaning washable parts, be sure to dry them thoroughly in a cool place and then put them back in turn.



Main engine base



Patch tank



09 Troubleshooting

Fault description	Treatment measure
E0101	• If the fault occurs, contact customer service.
E0102	• If the fault occurs, contact customer service.
E0103	• Turn off the power of the machine and turn it on again after 10 seconds; • If the above measures do not solve the problem, please contact customer service.
E0104	• Turn off the power of the machine and turn it on again after 10 seconds; • If the above measures do not solve the problem, please contact customer service.
E0105	• Turn off the power of the machine and turn it on again after 10 seconds; • If the above measures do not solve the problem, please contact customer service.
E0106	• Turn off the power of the machine, put the sand bin in the correct position, and then restart the machine; • If the above measures do not solve the problem, please contact customer service.
E0107	• Turn off the power of the machine, check whether there is foreign matter stuck in the sand silo accessories, remove it, put the sand silo in the correct position, and restart the machine; • If the above measures do not solve the problem, please contact customer service.
E0108	• Turn off the power supply of the machine, check whether there is foreign matter stuck in the door accessories of the toilet box, remove it, and restart the machine; • If the above measures do not solve the problem, please contact customer service.
E0109	• Turn off the power supply of the machine, check whether there is foreign matter stuck in the door accessories of the toilet box, remove it, and restart the machine; • If the above measures do not solve the problem, please contact customer service.

10 Product Specifications

Smart Cat Litter Box

Model: CS106

Rated Voltage: 12V ==

Rated Power: 5W

Net Product Weight: 20kg

Product Size: 697×600×713mm

Material: ABS

Color: White

The product is equipped with a high-precision 5.8G radar module that can detect people and pets in real time.

11 Warranty

Thank you for choosing Homerunpet Smart Cat Litter Box. Please read the instructions below carefully before using: Homerunpet offers a one-year warranty from the date of original purchase and Homerunpet requires presentation of the original proof of purchase to confirm the date. Product replacements and repaired parts can be warranted given that they are valid and unexpired according to the original warranty. This warranty applies only under the circumstance of normal operation that the appliance is intended to. Any damage caused by negligence, accident, misuse or any other reasons beyond Homerunpet's reasonable control including but not limited to: failure to follow the product instructions or service manual, maintenance that is undue or not in a timely manner, connection to improper power supply, unauthorized product modification, fire, lightning, flood or other force majeure matters, is not covered by this warranty. Any maintenance must be implemented as per the product instructions herein. The motor is factory sealed, and any modification will invalidate this warranty immediately. For after-sales service and more information, please contact: contact@homerunpet.com.

FCC Warning

This device complies with part 15 of the FCC Rules. Operation is subject to the following two conditions: (1) This device may not cause harmful interference, and (2) this device must accept any interference received, including interference that may cause undesired operation.

Any Changes or modifications not expressly approved by the party responsible for compliance could void the user's authority to operate the equipment.

Note: This equipment has been tested and found to comply with the limits for a Class B digital device, pursuant to part 15 of the FCC Rules. These limits are designed to provide reasonable protection against harmful interference in a residential installation. This equipment generates uses and can radiate radio frequency energy and, if not installed and used in accordance with the instructions, may cause harmful interference to radio communications. However, there is no guarantee that interference will not occur in a particular installation. If this equipment does cause harmful interference to radio or television reception, which can be determined by turning the equipment off and on, the user is encouraged to try to correct the interference by one or more of the following measures:

- Reorient or relocate the receiving antenna.
- Increase the separation between the equipment and receiver.
- Connect the equipment into an outlet on a circuit different from that to which the receiver is connected.
- Consult the dealer or an experienced radio/TV technician for help.

This equipment complies with FCC radiation exposure limits set forth for an uncontrolled environment. This equipment should be installed and operated with minimum distance 20cm between the radiator & your body.