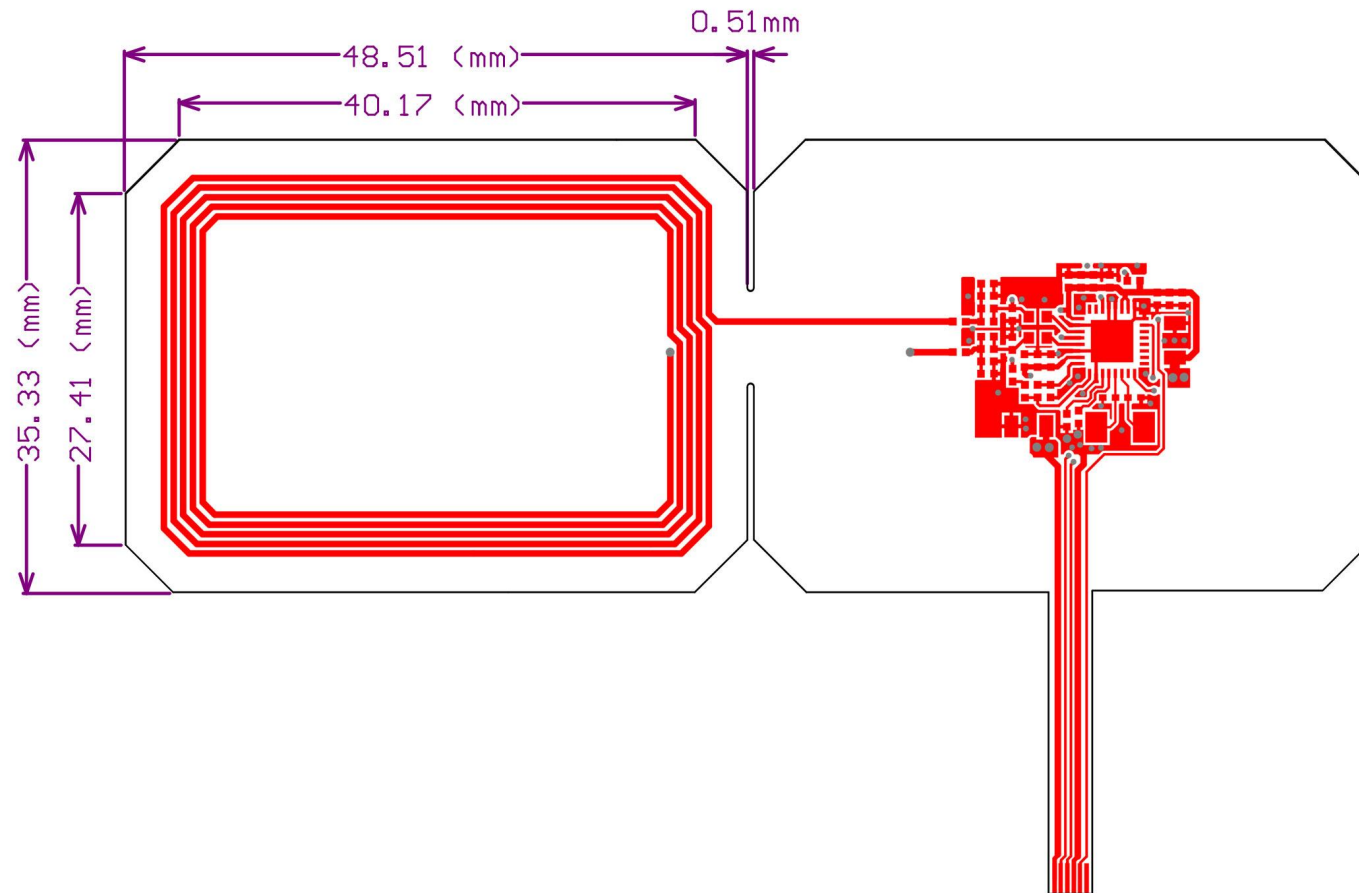


Embed Singapore Pte Ltd
101 Thomson Road, #25-03/04 United Square, Singapore 307593, Singapore



Model: STP-001

--Technical Specification

- (1) Board Layer Count: 2 Layers
- (2) Base Material Polyimide
- (3) Silkscreen Color=White
- (4) Ferrite sheet with double side adhesive,thickness 0.15mm=Mechanical 2
- (5) Stiffener(bottom)=Mechanical 3
- (6) Immersion = Gold

TOP SOLDERMASK .GTS			
TOP LAYER .GTL		CU 0.5OZ	
		PI	
BOTTOM LAYER .GBL		CU 0.5OZ	
BOTTOM SOLDERMASK .GBS			
STIFFENER .GM3		PI--0.2mm	

TOTAL THICKNESS 0.3mm +/-0.03(INCLUDES STIFFENER)

Legend is only valid on Drill Drawing layer

Board Outline Layer = Mechanical 4

We statement that All measurements were performed radiated and therefore additional antenna gain documentation is not required.