



Shenzhen CTL Testing Technology Co., Ltd.  
Tel: +86-755-89486194 E-mail: ctl@ctl-lab.com

# TEST REPORT

## 47 CFR Part 15, Subpart C 15.247

Report Reference No.....: CTL2505132111-WF

Compiled by:  
( position+printed name+signature)

Happy Guo  
(File administrators)

Tested by:  
( position+printed name+signature)

Jack Wang  
(Test Engineer)

Approved by:  
( position+printed name+signature)

Ivan Xie  
(Manager)



Product Name.....: tonsil stone removal

Model/Type reference.....: R1

List Model(s).....: RV2, RV3, RV4, RV5, RV6, RV7, RV8, RV9, RV10, RV11, RV12, RV13, RV15

Trade Mark.....: N/A

FCC ID.....: 2BFO4-R1

Applicant's name.....: Shenzhen Yipincheng Technology Co., Ltd.

Address of applicant.....: B1,18 /F, Building 12, Lehui Science and Technology Innovation Center, 489 Jihua Road, Bantian Community, Longgang District, Shenzhen, China

Test Firm.....: Shenzhen CTL Testing Technology Co., Ltd.

Address of Test Firm.....: Floor 1-A, Baisha Technology Park, No.3011, Shahexi Road, Nanshan District, Shenzhen, China 518055

Test specification.....:

Standard.....: 47 CFR Part 15, Subpart C 15.247: Operation within the bands 902-928 MHz, 2400-2483.5 MHz and 5725-5850 MHz.

TRF Originator.....: Shenzhen CTL Testing Technology Co., Ltd.

Master TRF.....: Dated 2011-01

Date of receipt of test item.....: May 16, 2025

Date of Test Date.....: May 16, 2025-June 16, 2025

Date of Issue.....: June 19, 2025

Result.....: Pass

Shenzhen CTL Testing Technology Co., Ltd. All rights reserved.

This publication may be reproduced in whole or in part for non-commercial purposes as long as the Shenzhen CTL Testing Technology Co., Ltd. is acknowledged as copyright owner and source of the material. Shenzhen CTL Testing Technology Co., Ltd. takes no responsibility for and will not assume liability for damages resulting from the reader's interpretation of the reproduced material due to its placement and context.

# TEST REPORT

<b>Test Report No. :</b> CTL2505132111-WF	June 19, 2025 ----- Date of issue
---	---

Equipment under Test : tonsil stone remova

Sample No : CTL2505132111

Model /Type : R1

Listed Models : RV2, RV3, RV4, RV5, RV6, RV7, RV8, RV9, RV10, RV11,  
RV12, RV13, RV15

**Applicant** : **Shenzhen Yipincheng Technology Co., Ltd.**

Address : B1,18 /F, Building 12, Lehui Science and  
TechnologyInnovation Center, 489 Jihua Road, Bantian  
Community,Longgang District, Shenzhen,China

**Manufacturer** : **Shenzhen Yipincheng Technology Co., Ltd.**

Address : B1,18 /F, Building 12, Lehui Science and  
TechnologyInnovation Center, 489 Jihua Road, Bantian  
Community,Longgang District, Shenzhen,China

<b>Test result</b>	<b>Pass *</b>
--------------------	---------------

\* In the configuration tested, the EUT complied with the standards specified page 5.

The test results presented in this report relate only to the object tested.

This report shall not be reproduced, except in full, without the written approval of the issuing testing laboratory.

### **\*\* Modified History \*\***

[illegible]

## Table of Contents

## Page

<b>1. SUMMARY .....</b>	<b>5</b>
1.1. TEST STANDARDS .....	5
1.2. TEST DESCRIPTION .....	5
1.3. TEST FACILITY .....	6
1.4. STATEMENT OF THE MEASUREMENT UNCERTAINTY .....	6
1.5. AUXILIARY EQUIPMENT INFORMATION .....	7
<b>2. GENERAL INFORMATION .....</b>	<b>8</b>
2.1. ENVIRONMENTAL CONDITIONS .....	8
2.2. GENERAL DESCRIPTION OF EUT .....	8
2.3. DESCRIPTION OF TEST MODES AND TEST FREQUENCY .....	9
2.4. EQUIPMENTS USED DURING THE TEST .....	10
2.5. RELATED SUBMITTAL(S) / GRANT (S) .....	10
2.6. MODIFICATIONS .....	10
<b>3. TEST CONDITIONS AND RESULTS .....</b>	<b>11</b>
3.1. CONDUCTED EMISSIONS TEST .....	11
3.2. RADIATED EMISSIONS AND BAND EDGE .....	14
3.3. MAXIMUM CONDUCTED OUTPUT POWER .....	24
3.4. POWER SPECTRAL DENSITY .....	25
3.5. 6DB BANDWIDTH .....	26
3.6. OUT-OF-BAND EMISSIONS .....	27
3.7. ANTENNA REQUIREMENT .....	28
<b>4. TEST SETUP PHOTOS OF THE EUT .....</b>	<b>29</b>
<b>5. PHOTOS OF THE EUT .....</b>	<b>31</b>

# 1. SUMMARY

## 1.1. TEST STANDARDS

The tests were performed according to following standards:

[47 CFR Part 15, Subpart C 15.247](#): Frequency Hopping, Direct Spread Spectrum and Hybrid Systems that are in operation within the bands of 902-928 MHz, 2400-2483.5 MHz, and 5725-5850 MHz

[ANSI C63.10: 2013](#): American National Standard for Testing Unlicensed Wireless Devices

[KDB 558074 D01 v05r02](#): KDB558074 D01 15.247 Meas Guidance v05r02

## 1.2. Test Description

47 CFR Part 15, Subpart C 15.247		
47 CFR Part 15, Subpart C 15.207	AC Power Conducted Emission	PASS
47 CFR Part 15, Subpart C 15.247(a)(2)	6dB Bandwidth	PASS
47 CFR Part 15, Subpart C 15.247(d)	Spurious RF Conducted Emission	PASS
47 CFR Part 15, Subpart C 15.247(b)	Maximum Conducted Output Power	PASS
47 CFR Part 15, Subpart C 15.247(e)	Power Spectral Density	PASS
47 CFR Part 15, Subpart C 15.109/ 15.205/ 15.209	Radiated Emissions	PASS
47 CFR Part 15, Subpart C 15.247(d)	Band Edge	PASS
47 CFR Part 15, Subpart C 15.203/15.247 (b)	Antenna Requirement	PASS

### 1.3. Test Facility

#### 1.3.1 Address of the test laboratory

Shenzhen CTL Testing Technology Co., Ltd.

Floor 1-A, Baisha Technology Park, No.3011, Shaheixi Road, Nanshan District, Shenzhen, China 518055

There is one 3m semi-anechoic chamber and two line conducted labs for final test. The Test Sites meet the requirements in documents ANSI C63.10 and CISPR 32/EN 55032 requirements.

#### 1.3.2 Laboratory accreditation

The test facility is recognized, certified, or accredited by the following organizations:

##### **CNAS-Lab Code: L7497**

Shenzhen CTL Testing Technology Co., Ltd. has been assessed and proved to be in compliance with CNAS-CL01 Accreditation Criteria for Testing and Calibration Laboratories (identical to ISO/IEC 17025: 2017 General Requirements) for the Competence of Testing and Calibration Laboratories.

##### **A2LA-Lab Cert. No. 4343.01**

Shenzhen CTL Testing Technology Co., Ltd, EMC Laboratory has been accredited by A2LA for technical competence in the field of electrical testing, and proved to be in compliance with ISO/IEC 17025: 2017 General Requirements for the Competence of Testing and Calibration Laboratories and any additional program requirements in the identified field of testing.

##### **IC Registration No.: 9618B**

##### **CAB identifier: CN0041**

The 3m alternate test site of Shenzhen CTL Testing Technology Co., Ltd. EMC Laboratory has been registered by Innovation, Science and Economic Development Canada to test to Canadian radio equipment requirements with Registration No.: 9618B.

##### **FCC-Registration No.: 399832**

##### **Designation No.: CN1216**

Shenzhen CTL Testing Technology Co., Ltd. EMC Laboratory has been registered and fully described in a report filed with the (FCC) Federal Communications Commission. The acceptance letter from the FCC is maintained in our files. Registration 399832.

### 1.4. Statement of the measurement uncertainty

The data and results referenced in this document are true and accurate. The reader is cautioned that there may be errors within the calibration limits of the equipment and facilities. The measurement uncertainty was calculated for all measurements listed in this test report acc. to CISPR 16 - 4 "Specification for radio disturbance and immunity measuring apparatus and methods – Part 4: Uncertainty in EMC Measurements" and is documented in the Shenzhen CTL Testing Technology Co., Ltd. quality system acc. to DIN EN ISO/IEC 17025. Furthermore, component and process variability of devices similar to that tested may result in additional deviation. The manufacturer has the sole responsibility of continued compliance of the device.

Hereafter the best measurement capability for CTL laboratory is reported:

Test	Measurement Uncertainty	Notes
Transmitter power conducted	$\pm 1.18$ dB	(1)
Transmitter power Radiated	$\pm 2.20$ dB	(1)
Conducted spurious emission 9KHz-40 GHz	$\pm 2.20$ dB	(1)
Occupied Bandwidth	$\pm 0.01$ ppm	(1)
Radiated Emission 9KHz~30MHz	$\pm 3.66$ dB	(1)
Radiated Emission 30~1000MHz	$\pm 4.08$ dB	(1)
Radiated Emission Above 1GHz	$\pm 4.32$ dB	(1)
20dB Emission Bandwidth	$\pm 1.9\%$	(1)
Carrier Frequency Separation	$\pm 1.9\%$	(1)
Maximum Power Spectral Density Level	$\pm 0.98$ dB	(1)
Number of Hopping Channel	$\pm 1.9\%$	(1)
Time of Occupancy	$\pm 0.11\%$	(1)
Max Peak Conducted Output Power	$\pm 0.98$ dB	(1)
Band-edge Spurious Emission	$\pm 1.21$ dB	(1)
Conducted RF Spurious Emission	9kHz-7GHz: $\pm 1.09$ dB 7GHz-26.5GHz: $\pm 3.27$ dB	(1)
Conducted Disturbance 0.15~30MHz	$\pm 2.96$ dB	(1)

(1) This uncertainty represents an expanded uncertainty expressed at approximately the 95% confidence level using a coverage factor of  $k=1.96$ .

### 1.5. Auxiliary equipment information

Manufacturer	Description	Model	Serial Number
Jiangsu Chenyang Electronics Co., LTD	Adapter	SC-88	SA18C63608

Note: This adapter is provided by the laboratory and is only for auxiliary testing. The customer delivered the goods without an adapter.

## 2. GENERAL INFORMATION

### 2.1. Environmental conditions

During the measurement the environmental conditions were within the listed ranges:

Normal Temperature:	25°C
Relative Humidity:	55 %
Air Pressure:	101 kPa

### 2.2. General Description of EUT

Product Name:	tonsil stone remova
Model/Type reference:	R1
EUT Rated Voltage:	DC 5V/0.4A from adapter or DC 3.7V from battery(240mAh)
Test Voltage:	DC 5V/0.4A from adapter or DC 3.7V from battery(240mAh)
<b>2.4G Wi-Fi</b>	
Supported type:	IEEE 802.11 b/g/n
Modulation:	IEEE 802.11 b: DSSS IEEE 802.11 g/IEEE 802.11 n(HT20): OFDM
Operation frequency:	IEEE 802.11 b/IEEE 802.11 g/IEEE 802.11 n(HT20): 2412MHz~2462MHz
Channel number:	IEEE 802.11 b/IEEE 802.11 g/IEEE 802.11 n(HT20): 11
Channel separation:	5MHz
Antenna type:	Internal Antenna
Antenna gain:	2dBi

Note1: For more details, please refer to the user's manual of the EUT.

Note2: Antenna gain provided by the applicant.



## 2.3. Description of Test Modes and Test Frequency

The Applicant provides communication tools software to control the EUT for staying in continuous transmitting and receiving mode for testing.

There are 11 channels provided to the EUT and Channel 01/06/11 were selected for Wi-Fi test.

### Operation Frequency Wi-Fi :

Channel	Frequency(MHz)	Channel	Frequency(MHz)
<b>1</b>	<b>2412</b>	8	2447
2	2417	9	2452
3	2422	10	2457
4	2427	<b>11</b>	<b>2462</b>
5	2432		
<b>6</b>	<b>2437</b>		
7	2442		

Note: The line display in grey were the channel selected for testing

### Data Rate Used:

Preliminary tests were performed in different data rate to find the worst radiated emission. The data rate shown in the table below is the worst-case rate with respect to the specific test item. Investigation has been done on all the possible configurations for searching the worst cases. The following table is a list of the test modes shown in this test report.

Test Items	Mode	Data Rate	Channel
Maximum Conducted Output Power Power Spectral Density 6dB Bandwidth Spurious RF conducted emission Radiated Emission 9kHz~1GHz& Radiated Emission 1GHz~10th Harmonic	11b/DSSS	1 Mbps	1/6/11
	11g/OFDM	6 Mbps	1/6/11
	11n(20MHz)/OFDM	6.5Mbps	1/6/11
Band Edge	11b/DSSS	1 Mbps	1/11
	11g/OFDM	6 Mbps	1/11
	11n(20MHz)/OFDM	6.5Mbps	1/11

Software Version: WiFiTestTool_V1.7	
Test Mode	Power level
IEEE 802.11 b	25
IEEE 802.11 g	30
IEEE 802.11 n(HT20)	30

## 2.4. Equipments Used during the Test

Conducted Emission					
Test Equipment	Manufacturer	Model No.	Serial No.	Last calibration	Calibration Due
EMI Test Receiver	ROHDE & SCHWARZ	ESCI	1166.5950.03	2025/04/29	2026/04/28
LISN	ROHDE & SCHWARZ	ESH2-Z5	860014/010	2025/04/29	2026/04/28
Limitator	ROHDE & SCHWARZ	ESH3-Z2	100408	2025/04/29	2026/04/28
Software:					
Name of Software:			Version:		
ES-K1			V1.71		

Radiated Emission					
Test Equipment	Manufacturer	Model No.	Serial No.	Last Cal.	Cal.Due
Active Loop Antenna	Da Ze	ZN30900A	/	2024/04/30	2027/04/29
Double cone logarithmic antenna	Schwarzbeck	VULB 9168	824	2023/02/13	2026/02/12
Horn Antenna	Sunol Sciences Corp.	DRH-118	A062013	2024/11/25	2027/11/24
Horn Antenna	Ocean Microwave	OBH100400	26999002	2025/02/21	2028/02/20
Amplifier	MRT-AP01M06	MRT	S-001	2025/04/29	2026/04/28
Amplifier	Brief&Smart	LNA-4018	2104197	2025/04/30	2026/04/29
EMI Test Receiver	ROHDE & SCHWARZ	ESCI	1166.5950.03	2025/04/29	2026/04/28
Spectrum Analyzer	RS	FSP	1164.4391.38	2025/04/29	2026/04/28
Software:					
Name of Software:			Version:		
EZ_EMC(Below 1GHz)			V1.1.4.2		
EZ_EMC(Above 1GHz)			V1.1.4.2		

RF Conducted					
Test Equipment	Manufacturer	Model No.	Serial No.	Last Cal.	Cal.Due
Spectrum Analyzer	Keysight	N9020A	MY53420874	2025/04/29	2026/04/28
Temperature/Humidity Meter	Ji Yu	MC501	/	2025/05/06	2026/05/05
Power Measurement Module	TSTPASS	TSPS2023R	TSCB220016	2024/05/03	2025/05/02
Software:					
Name of Software:			Version:		
TST-PASS			V2.0		

## 2.5. Related Submittal(s) / Grant (s)

This submittal(s) (test report) is intended to comply with Section 15.247 of the FCC Part 15, Subpart C Rules.

## 2.6. Modifications

No modifications were implemented to meet testing criteria.

### 3. TEST CONDITIONS AND RESULTS

#### 3.1. Conducted Emissions Test

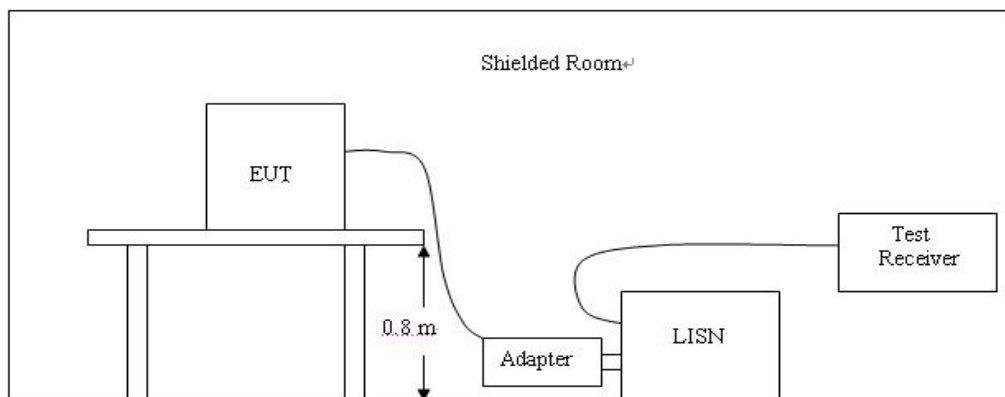
##### LIMIT

FCC CFR Title 47 Part 15 Subpart C Section 15.207

Frequency range (MHz)	Limit (dBuV)	
	Quasi-peak	Average
0.15-0.5	66 to 56*	56 to 46*
0.5-5	56	46
5-30	60	50

\* Decreases with the logarithm of the frequency.

##### TEST CONFIGURATION



##### TEST PROCEDURE

1. The equipment was set up as per the test configuration to simulate typical actual usage per the user's manual. The EUT is a landing system; a wooden table with a height of 0.8 meters is used and is placed on the ground plane as per ANSI C63.10:2013.
2. Support equipment, if needed, was placed as per ANSI C63.10:2013.
3. All I/O cables were positioned to simulate typical actual usage as per ANSI C63.10:2013.
4. The adapter received AC120V/60Hz power through a Line Impedance Stabilization Network (LISN) which supplied power source and was grounded to the ground plane.
5. All support equipments received AC power from a second LISN, if any.
6. The EUT test program was started. Emissions were measured on each current carrying line of the EUT using a spectrum Analyzer / Receiver connected to the LISN powering the EUT. The LISN has two monitoring points: Line 1 (Hot Side) and Line 2 (Neutral Side). Two scans were taken: one with Line 1 connected to Analyzer / Receiver and Line 2 connected to a 50 ohm load; the second scan had Line 1 connected to a 50 ohm load and Line 2 connected to the Analyzer / Receiver.
7. Analyzer / Receiver scanned from 150 KHz to 30MHz for emissions in each of the test modes.
8. During the above scans, the emissions were maximized by cable manipulation.

**TEST RESULTS**

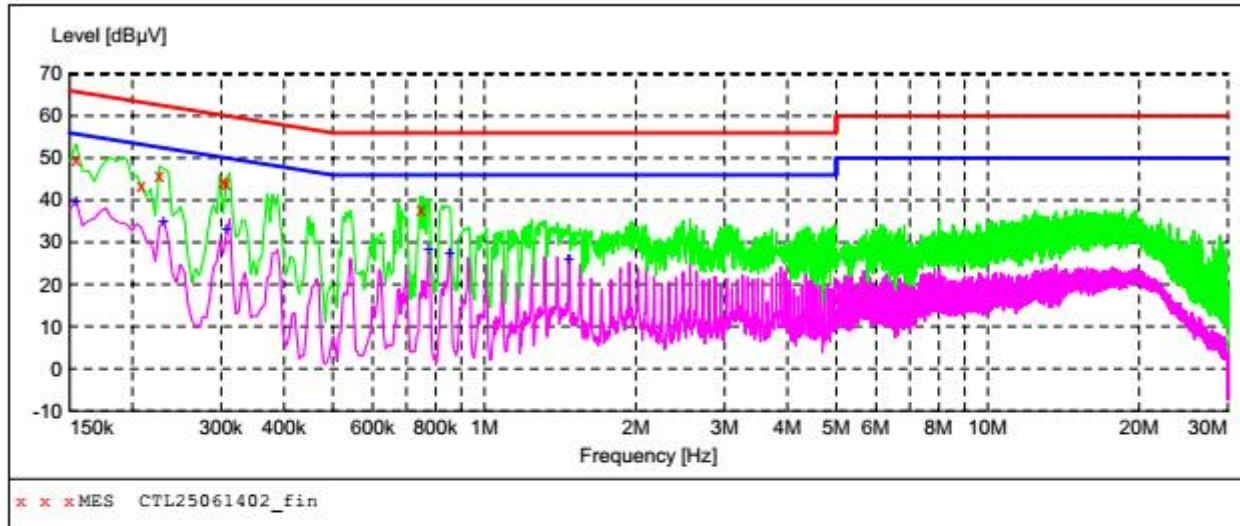
Remark: 802.11b/802.11g/802.11n(HT20) mode all have been tested ,only worse case is reported.

**Test Mode**

802.11b

**Line:****L1****SCAN TABLE: "Voltage (9K-30M)FIN"**

Short Description: 150K-30M Voltage

**MEASUREMENT RESULT: "CTL25061402\_fin"**

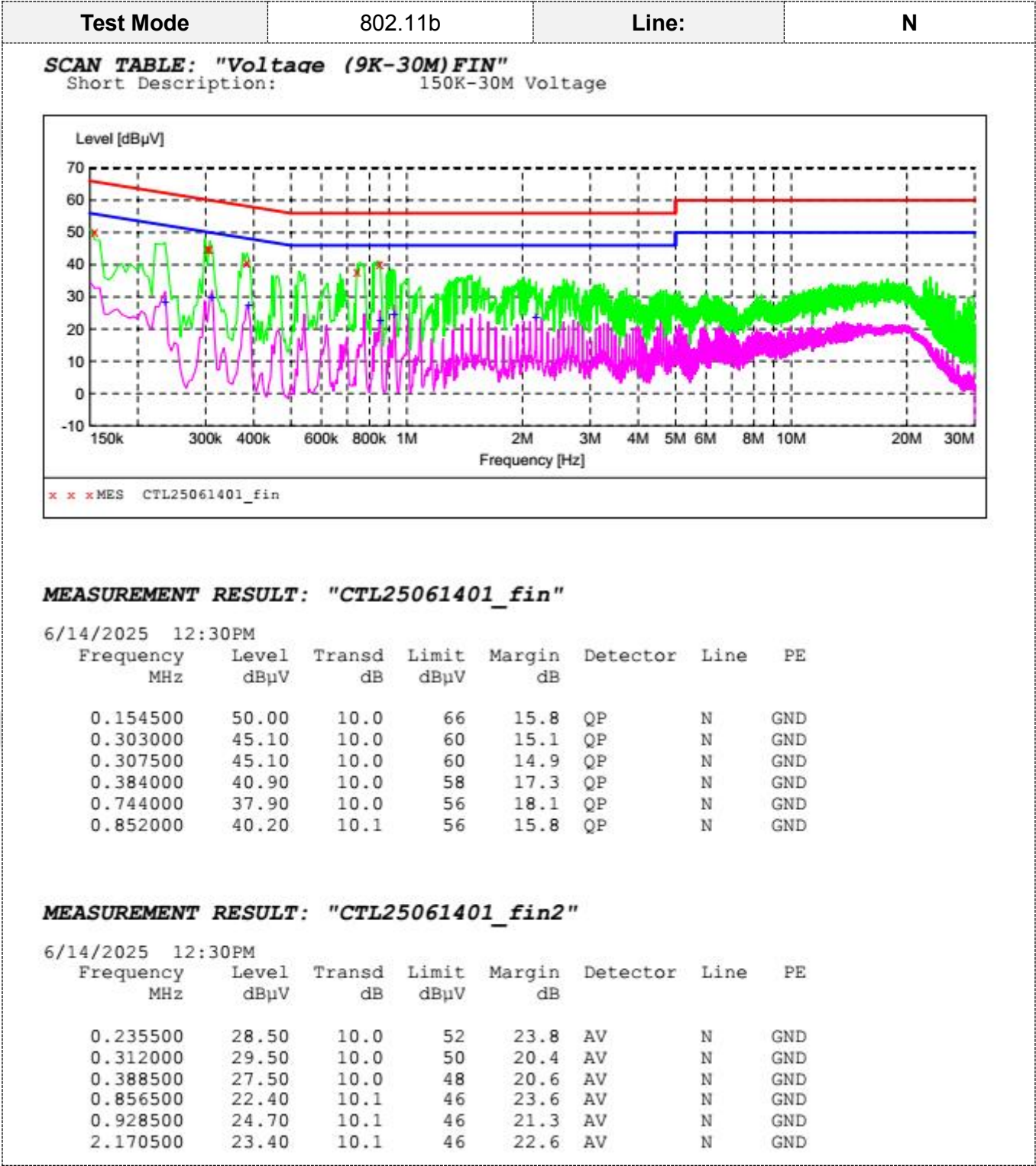
6/14/2025 12:33PM

Frequency MHz	Level dBμV	Transd dB	Limit dBμV	Margin dB	Detector	Line	PE
0.154500	49.80	10.0	66	16.0	QP	L1	GND
0.208500	43.30	10.0	63	20.0	QP	L1	GND
0.226500	45.70	10.0	63	16.9	QP	L1	GND
0.303000	44.30	10.0	60	15.9	QP	L1	GND
0.307500	44.10	10.0	60	15.9	QP	L1	GND
0.748500	37.80	10.0	56	18.2	QP	L1	GND

**MEASUREMENT RESULT: "CTL25061402\_fin2"**

6/14/2025 12:33PM

Frequency MHz	Level dBμV	Transd dB	Limit dBμV	Margin dB	Detector	Line	PE
0.154500	39.70	10.0	56	16.1	AV	L1	GND
0.231000	34.80	10.0	52	17.6	AV	L1	GND
0.307500	33.20	10.0	50	16.8	AV	L1	GND
0.775500	28.10	10.0	46	17.9	AV	L1	GND
0.856500	27.50	10.1	46	18.5	AV	L1	GND
1.473000	25.90	10.1	46	20.1	AV	L1	GND



### 3.2. Radiated Emissions and Band Edge

#### Limit

For intentional device, according to § 15.209(a), the general requirement of field strength of radiated emission out of authorized band shall not exceed the following table at a 3 meters measurement distance.

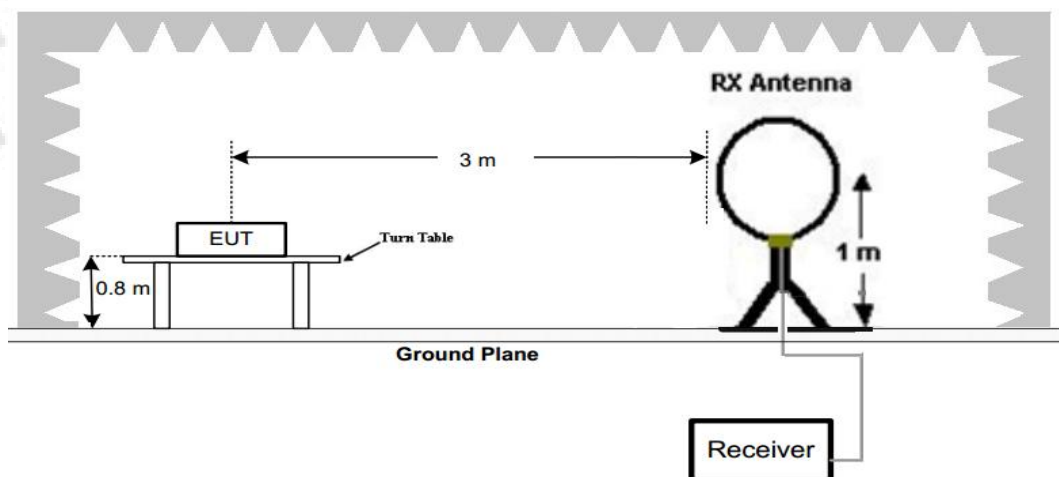
In addition, radiated emissions which fall in the restricted bands, as defined in §15.205(a), must also comply with the radiated emission limits specified in §15.209(a)

Radiated emission limits

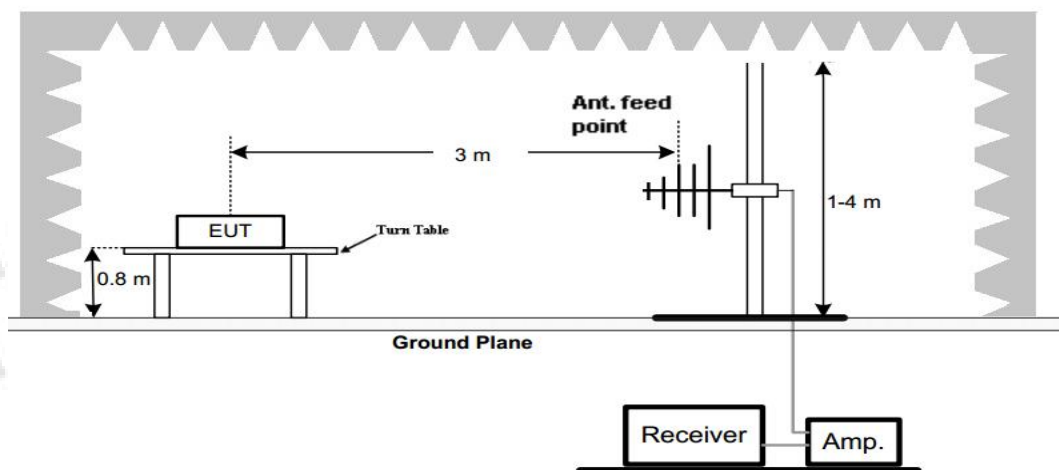
Frequency (MHz)	Distance (Meters)	Radiated (dBμV/m)	Radiated (μV/m)
0.009-0.49	3	$20\log(2400/F(\text{KHz})) + 40\log(300/3)$	$2400/F(\text{KHz})$
0.49-1.705	3	$20\log(24000/F(\text{KHz})) + 40\log(30/3)$	$24000/F(\text{KHz})$
1.705-30	3	$20\log(30) + 40\log(30/3)$	30
30-88	3	40.0	100
88-216	3	43.5	150
216-960	3	46.0	200
Above 960	3	54.0	500

#### TEST CONFIGURATION

(A) Radiated Emission Test Set-Up, Frequency Below 30MHz

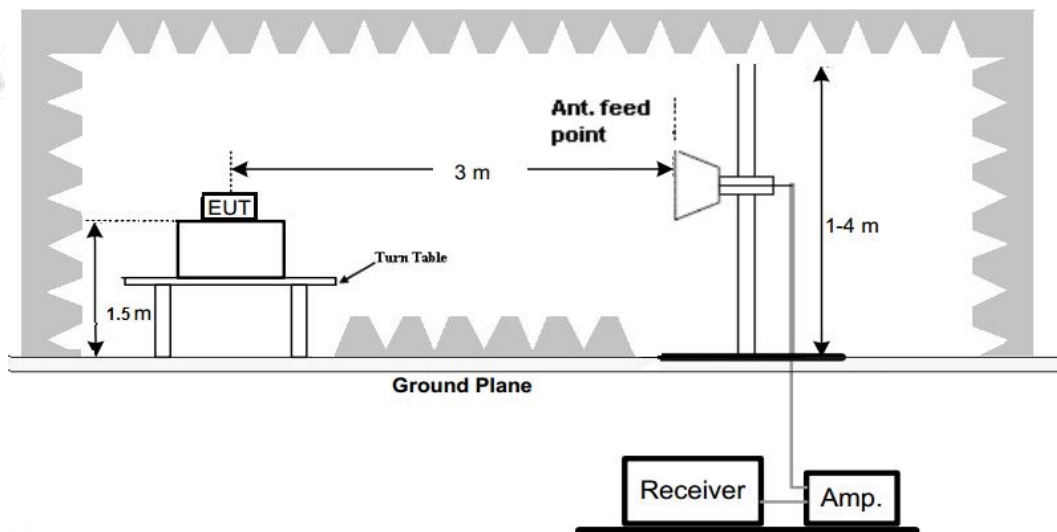


(B) Radiated Emission Test Set-Up, Frequency below 1000MHz





## (C) Radiated Emission Test Set-Up, Frequency above 1000MHz

**Test Procedure**

1. Below 1GHz measurement the EUT is placed on a turntable which is 0.8m above ground plane, and above 1GHz measurement EUT was placed on a low permittivity and low loss tangent turn table which is 1.5m above ground plane.
2. Maximum procedure was performed by raising the receiving antenna from 1m to 4m and rotating the turn table from 0° to 360° to acquire the highest emissions from EUT
3. And also, each emission was to be maximized by changing the polarization of receiving antenna both horizontal and vertical.
4. Repeat above procedures until all frequency measurements have been completed.
5. The EUT was pretested with 3 orientations placed on the table for the radiated emission measurement –X, Y, and Z-plane. The X-plane results were found as the worst case and were shown in this report.

**TEST RESULTS**

Remark:

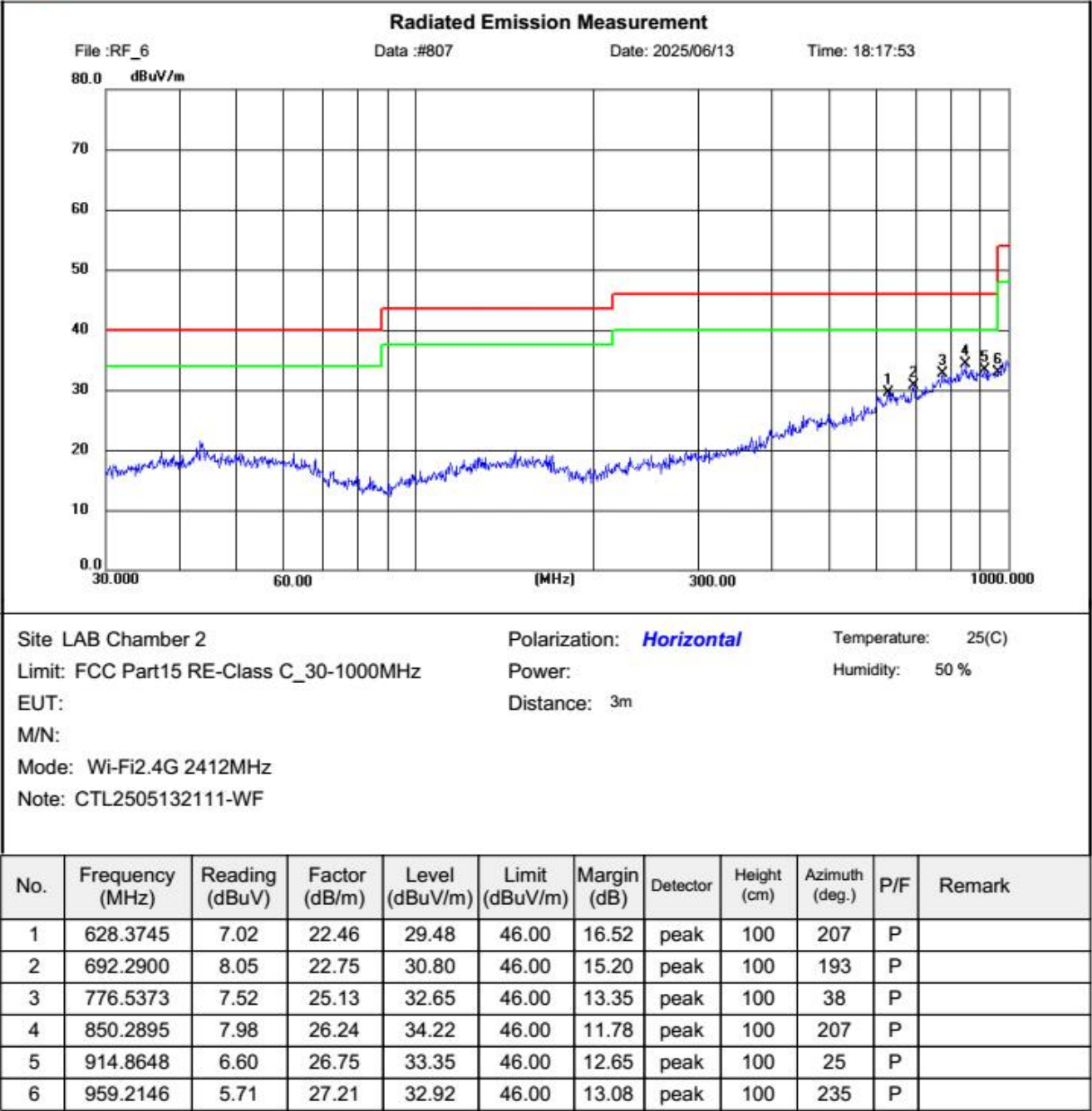
1. All three channels (lowest/middle/highest) of each mode were measured below 1GHz and recorded worst case at 802.11b low channel.
2. All three channels (lowest/middle/highest) of each mode were measured above 1GHz and recorded worst case at 802.11b low channel.
3. Radiated emission test from 9 KHz to 10th harmonic of fundamental was verified, Found the emission level are attenuated 20dB below the limits from 9 kHz to 30MHz, so it does not recorded in report.

For 30MHz-1GHz

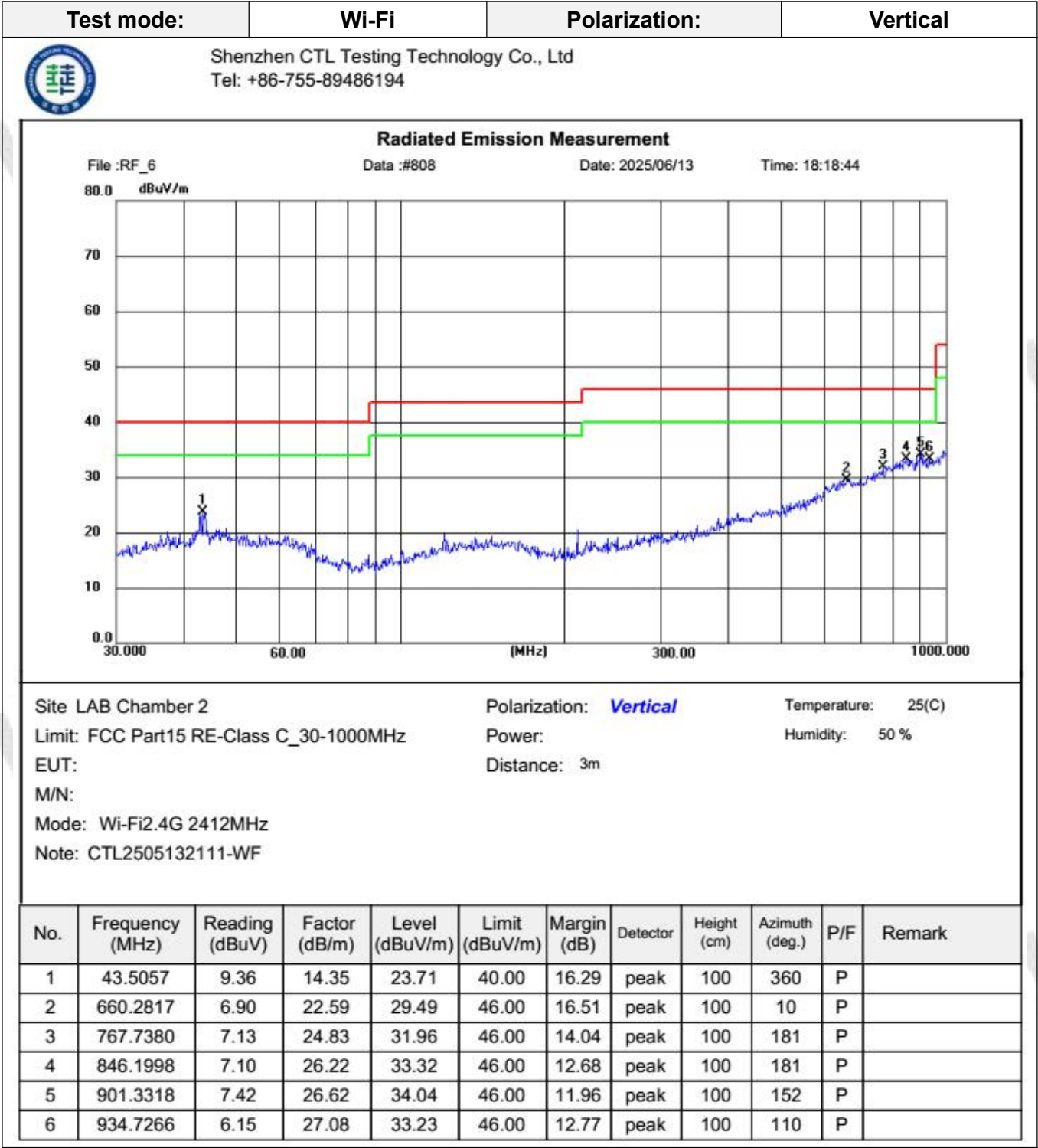
Test mode:	Wi-Fi	Polarization:	Horizontal
------------	-------	---------------	------------



Shenzhen CTL Testing Technology Co., Ltd  
Tel: +86-755-89486194







CTL

CTL

CTL

CTL

**For 1GHz to 25GHz**

Note: 802.11b/802.11g/802.11n (HT20) all have been tested, only worse case 802.11b is reported

**802.11b Mode (above 1GHz)**

Horizontal



Shenzhen CTL Testing Technology Co., Ltd  
Tel: +86-755-89486194

**Radiated Emission Measurement**

File :RF\_6

Data :#873

Date: 2025/06/14

Time: 15:41:37



Site LAB Chamber 2

Polarization: **Horizontal**

Temperature: 25(C)

Limit: FCC Part15 RE-Class C\_Above 1GHz\_PK

Power:

Humidity: 50 %

EUT:

Distance: 3m

M/N:

Mode: WIFI2.4G 2412MHz TX

Note: CTL2505132111-WF

No.	Frequency (MHz)	Reading (dBuV)	Factor (dB/m)	Level (dBuV/m)	Limit (dBuV/m)	Margin (dB)	Detector	Height (cm)	Azimuth (deg.)	P/F	Remark
1	2417.375	57.83	-16.89	40.94	74.00	33.06	peak	150	43	P	
2	4827.125	49.81	-8.05	41.76	74.00	32.24	peak	150	85	P	
3	10700.625	47.06	0.24	47.30	74.00	26.70	peak	150	170	P	
4	12050.000	47.48	2.18	49.66	74.00	24.34	peak	150	341	P	
5	14238.750	49.71	2.96	52.67	74.00	21.33	peak	150	114	P	
6	16895.000	46.30	6.66	52.96	74.00	21.04	peak	150	127	P	

## Vertical



Shenzhen CTL Testing Technology Co., Ltd  
Tel: +86-755-89486194

## Radiated Emission Measurement

File :RF\_6

Data :#874

Date: 2025/06/14

Time: 15:42:28

80.0 dBuV/m



Site LAB Chamber 2

Polarization: **Vertical**

Temperature: 25(C)

Limit: FCC Part15 RE-Class C\_Above 1GHz\_PK

Power:

Humidity: 50 %

EUT:

Distance: 3m

M/N:

Mode: WIFI2.4G 2412MHz TX

Note: CTL2505132111-WF

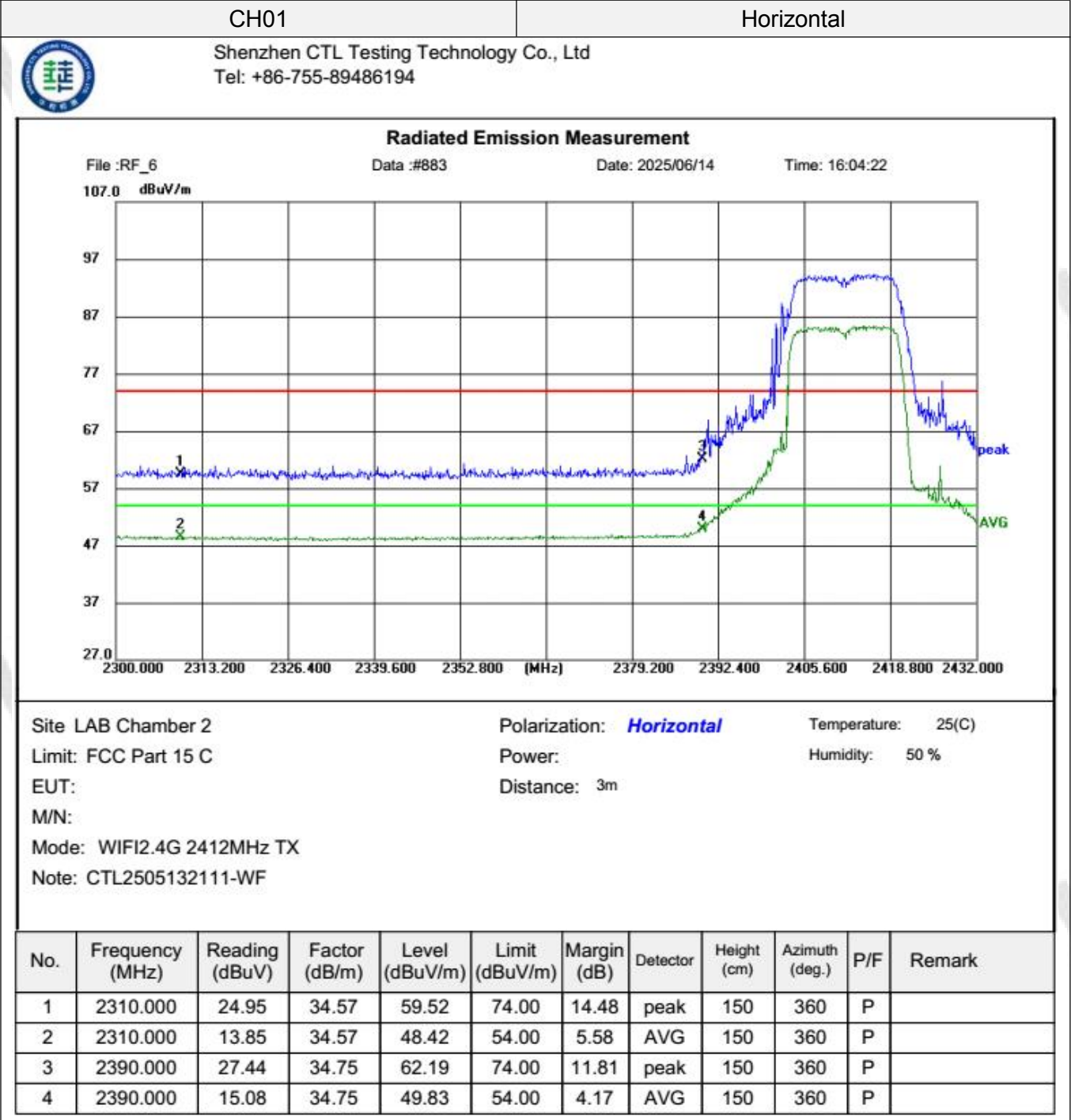
No.	Frequency (MHz)	Reading (dBuV)	Factor (dB/m)	Level (dBuV/m)	Limit (dBuV/m)	Margin (dB)	Detector	Height (cm)	Azimuth (deg.)	P/F	Remark
1	2406.750	64.93	-16.92	48.01	74.00	25.99	peak	150	118	P	
2	6295.500	47.71	-4.80	42.91	74.00	31.09	peak	150	18	P	
3	8480.000	48.03	-1.79	46.24	74.00	27.76	peak	150	275	P	
4	11353.000	47.34	0.79	48.13	74.00	25.87	peak	150	360	P	
5	13773.375	48.95	3.78	52.73	74.00	21.27	peak	150	318	P	
6	15588.125	48.78	3.93	52.71	74.00	21.29	peak	150	304	P	

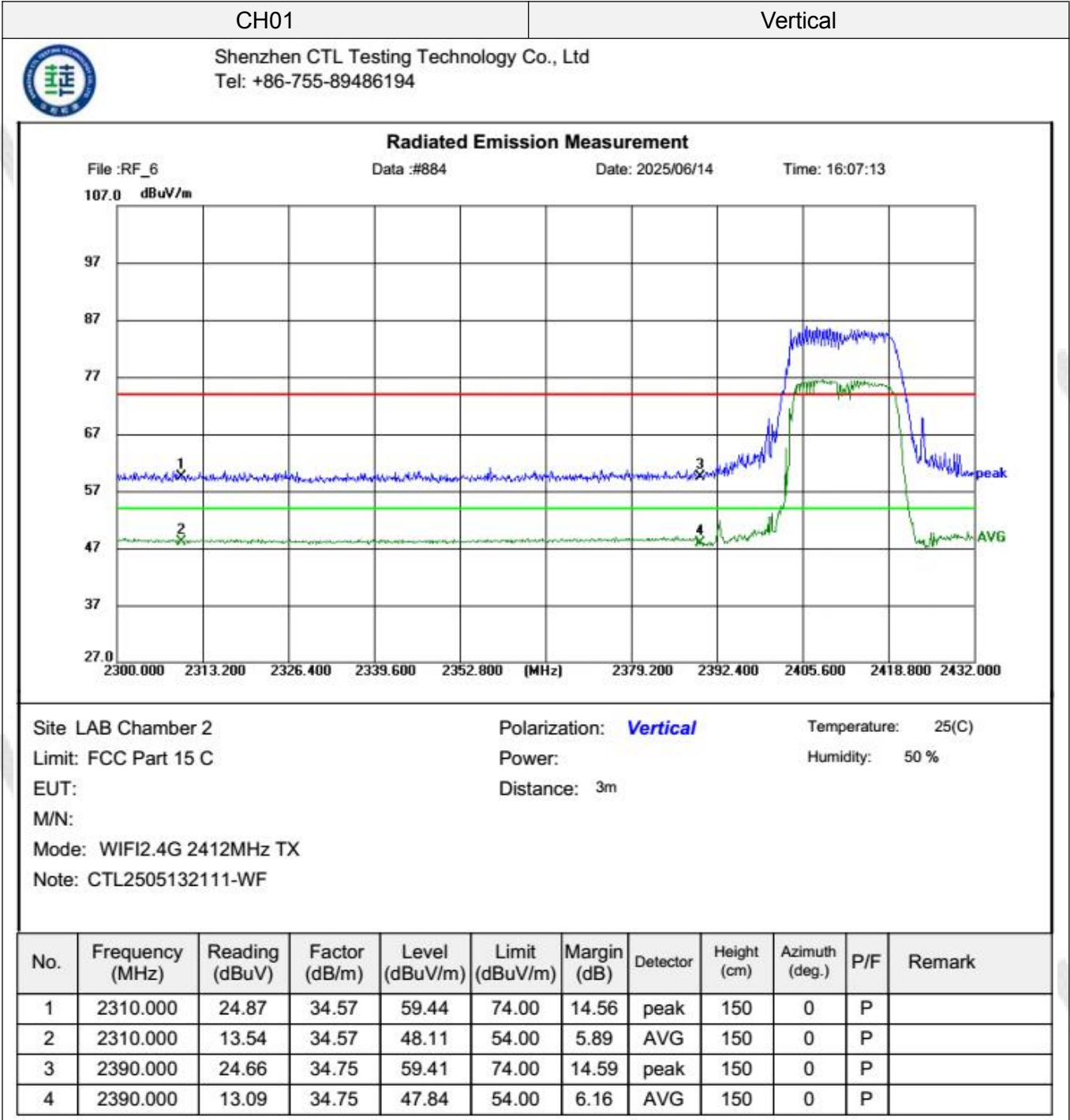
## REMARKS:

- 18GHz-26GHz not recorded for no spurious point have a margin of less than 6 dB with respect to the limits.
- PK detector measurement value is lower than the average limit. Therefore, there is no need to test AV detector measurements.

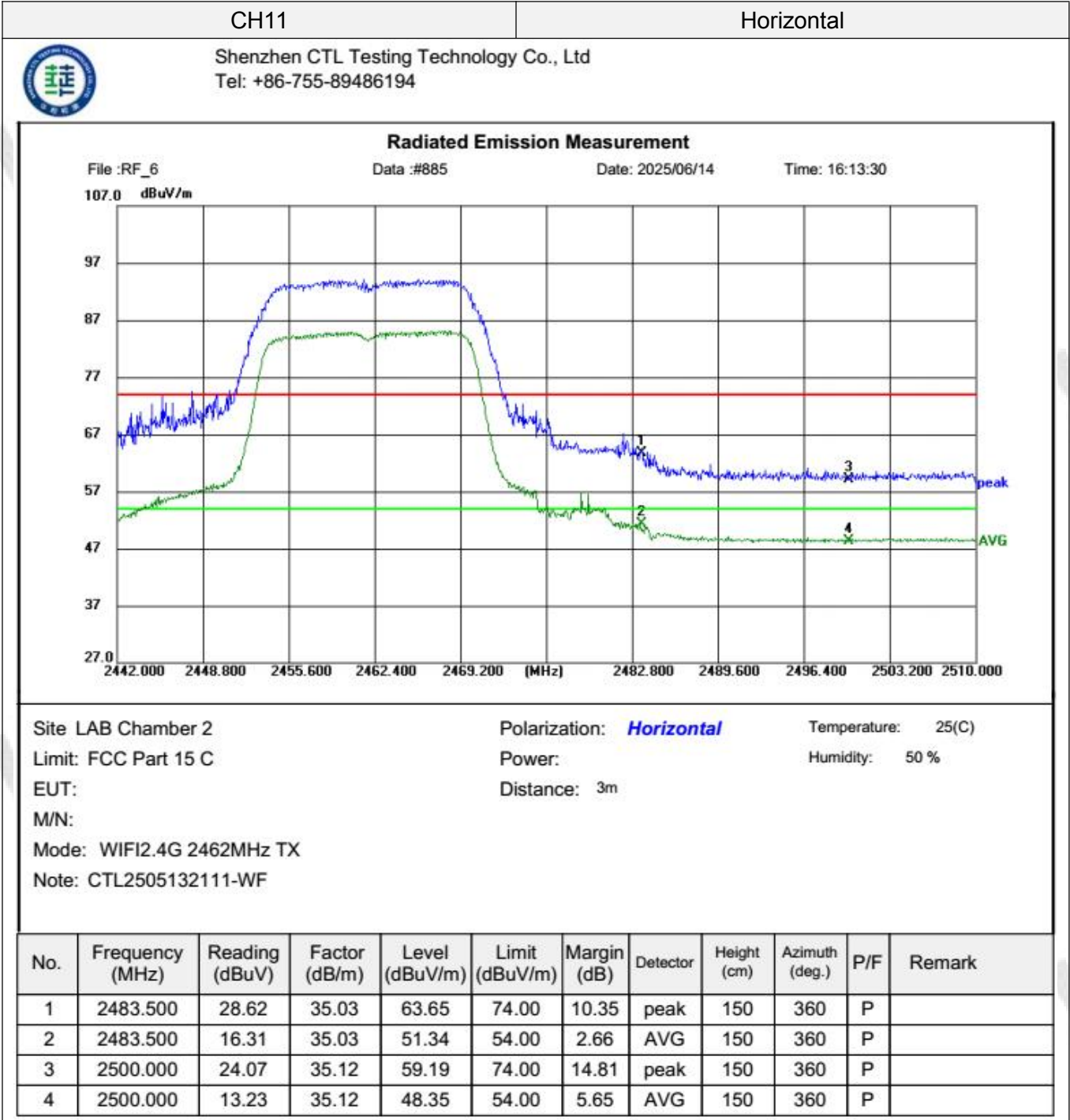
Results of Band Edges Test (Radiated)

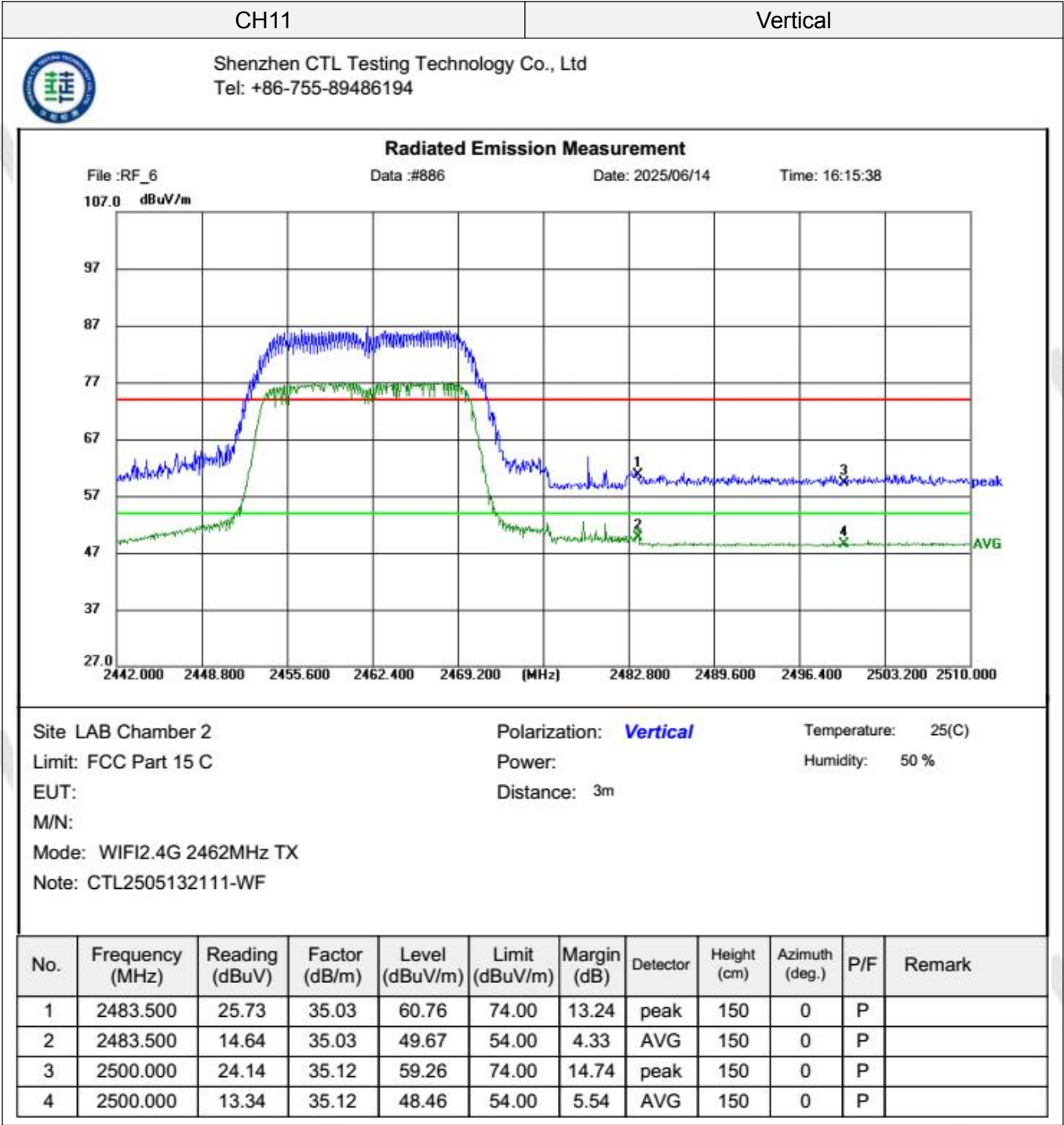
Note: 802.11b/802.11g/802.11n (HT20) all have been tested, only worse case 802.11n(HT20) is reported.











### 3.3. Maximum Conducted Output Power

#### Limit

The Maximum Peak Output Power Measurement is 30dBm.

#### Test Procedure

Remove the antenna from the EUT and then connect a low loss RF cable from the antenna port to the power sensor.

#### Test Configuration



#### Test Results

Raw data reference to Section 3 of document No. CTL2505132111-WF\_2.4G Wi-Fi\_Appendix.



### 3.4. Power Spectral Density

#### Limit

For digitally modulated systems, the power spectral density conducted from the intentional radiator to the antenna shall not be greater than 8 dBm in any 3 kHz band during any time interval of continuous transmission.

#### Test Procedure

1. Use this procedure when the maximum conducted output power in the fundamental emission is used to demonstrate compliance.
2. Set the RBW  $\geq 3$  kHz.
3. Set the VBW  $\geq 3 \times$  RBW.
4. Set the span to 1.5 times the DTS channel bandwidth.
5. Detector = Average.
6. Sweep points = 40001
7. Trace mode = max hold.
8. Allow trace to fully stabilize.
9. Use the peak marker function to determine the maximum power level.
10. If measured value exceeds limit, reduce RBW (no less than 3 kHz) and repeat.
11. The resulting PSD level must be 8dBm.

#### Test Configuration



#### Test Results

Raw data reference to Section 4 of document No. CTL2505132111-WF\_2.4G Wi-Fi\_Appendix.

### 3.5. 6dB Bandwidth

#### Limit

For digital modulation systems, the minimum 6 dB bandwidth shall be at least 500 kHz

#### Test Procedure

The transmitter output was connected to the spectrum analyzer through an attenuator. The bandwidth of the fundamental frequency was measured by spectrum analyzer with 100 KHz RBW and 300 KHz VBW. The 6dB bandwidth is defined as the total spectrum the power of which is higher than peak power minus 6dB.

#### Test Configuration



#### Test Results

Raw data reference to Section 2 of document No. CTL2505132111-WF\_2.4G Wi-Fi\_Appendix.

### 3.6. Out-of-band Emissions

#### Limit

In any 100 kHz bandwidth outside the frequency band in which the spread spectrum or digitally modulated intentional radiator is operating, the radio frequency power that is produced by the intentional radiator shall be at least 20 dB below that in the 100 kHz bandwidth within the band that contains the highest level of the desired power, based on either an RF conducted or a radiated measurement, provided the transmitter demonstrates compliance with the peak conducted power limits. If the transmitter complies with the conducted power limits based on the use of RMS averaging over a time interval, as permitted under paragraph (b)(3) of this section, the attenuation required under this paragraph shall be 30 dB instead of 20 dB. Attenuation below the general limits specified in §15.209(a) is not required.

#### Test Procedure

Connect the transmitter output to spectrum analyzer using a low loss RF cable, and set the spectrum analyzer to RBW=100 kHz, VBW= 300 kHz, peak detector , and max hold. Measurements utilizing these setting are made of the in-band reference level, bandedge and out-of-band emissions.

#### Test Configuration



#### Test Results

Raw data reference to Section 5 of document No. CTL2505132111-WF\_2.4G Wi-Fi\_Appendix.

### 3.7. Antenna Requirement

#### Standard Applicable

**For intentional device, according to FCC 47 CFR Section 15.203:**

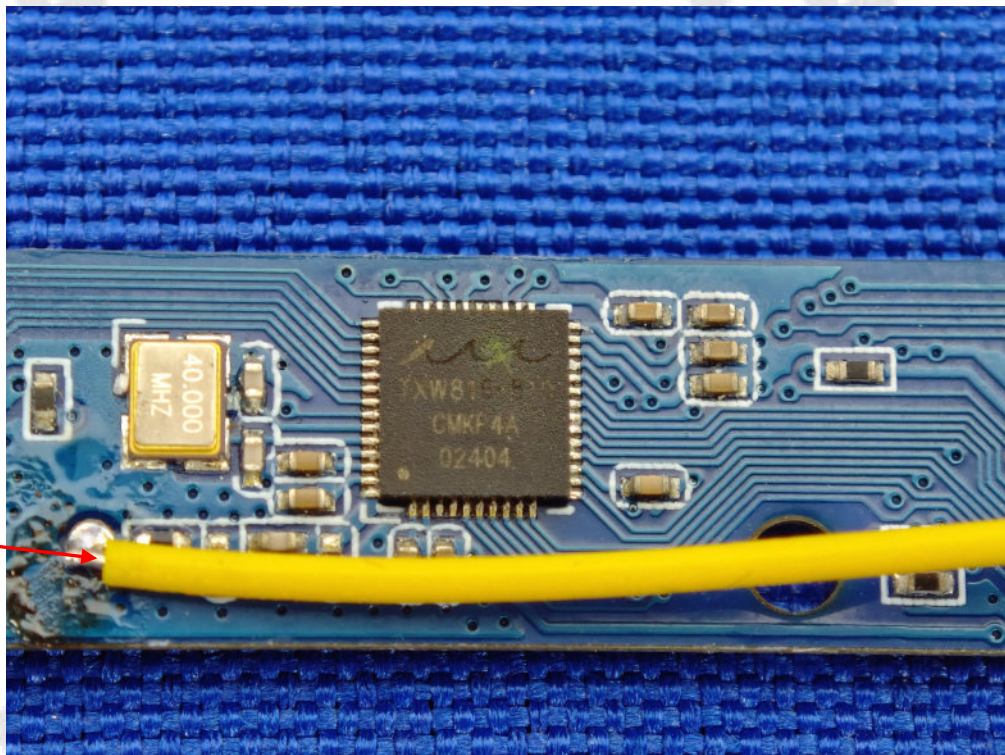
An intentional radiator shall be designed to ensure that no antenna other than that furnished by the responsible party shall be used with the device. The use of a permanently attached antenna or of an antenna that uses a unique coupling to the intentional radiator, the manufacturer may design the unit so that a broken antenna can be replaced by the user, but the use of a standard antenna jack or electrical connector is prohibited

#### **FCC CFR Title 47 Part 15 Subpart C Section 15.247(b) (4):**

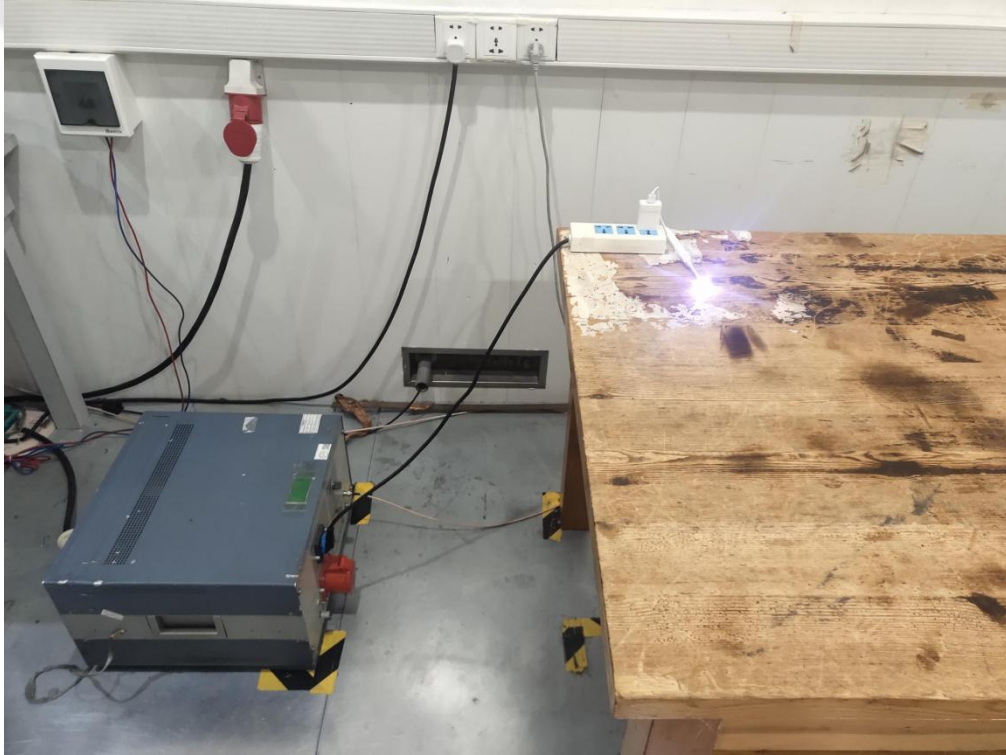
(4) The conducted output power limit specified in paragraph (b) of this section is based on the use of antennas with directional gains that do not exceed 6 dBi. Except as shown in paragraph (c) of this section, if transmitting antennas of directional gain greater than 6 dBi are used, the conducted output power from the intentional radiator shall be reduced below the stated values in paragraphs (b)(1), (b)(2), and (b)(3) of this section, as appropriate, by the amount in dB that the directional gain of the antenna exceeds 6 dBi.

#### Test Result:

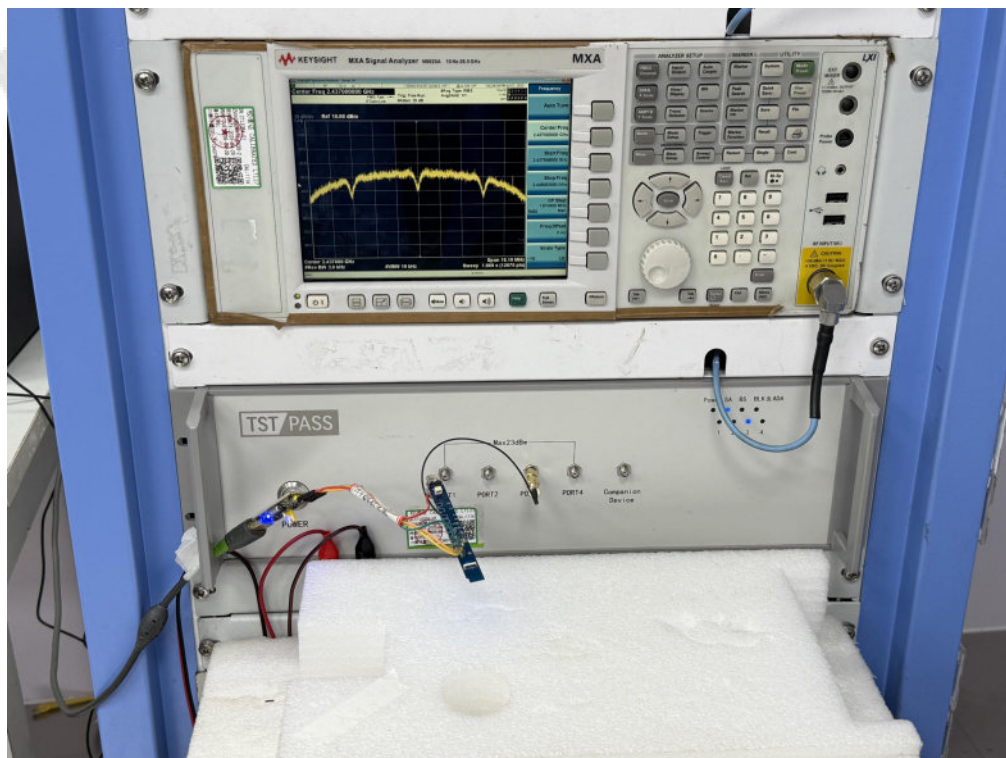
The maximum gain of antenna was 2dBi.



#### 4. Test Setup Photos of the EUT





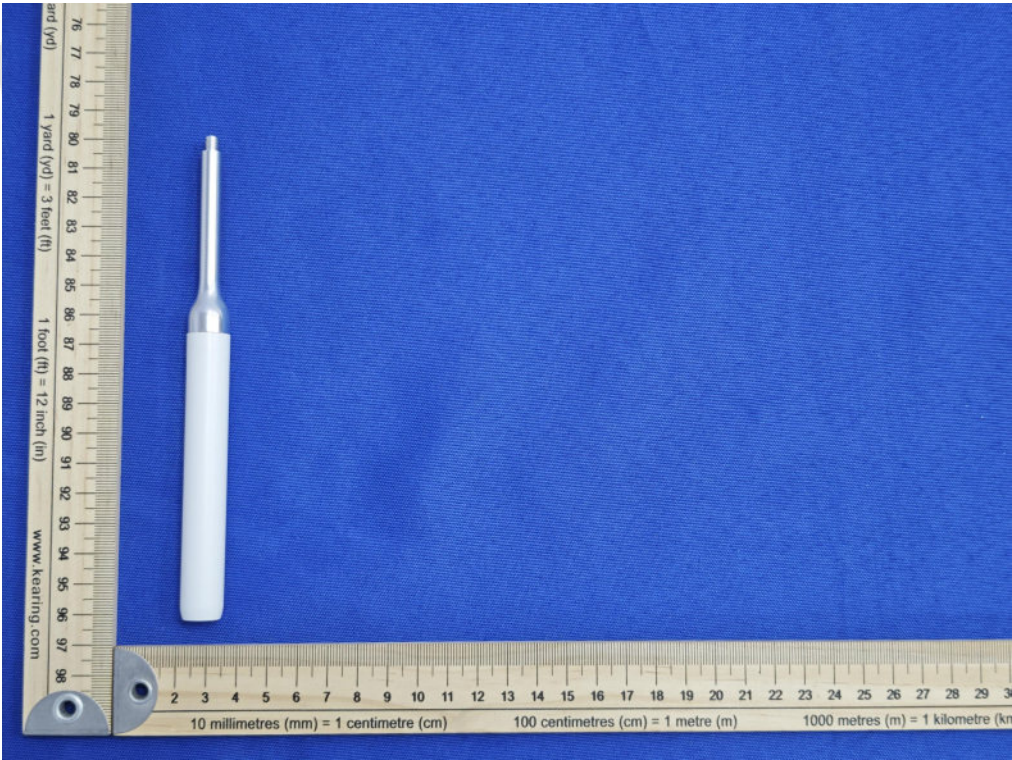


## 5. Photos of the EUT

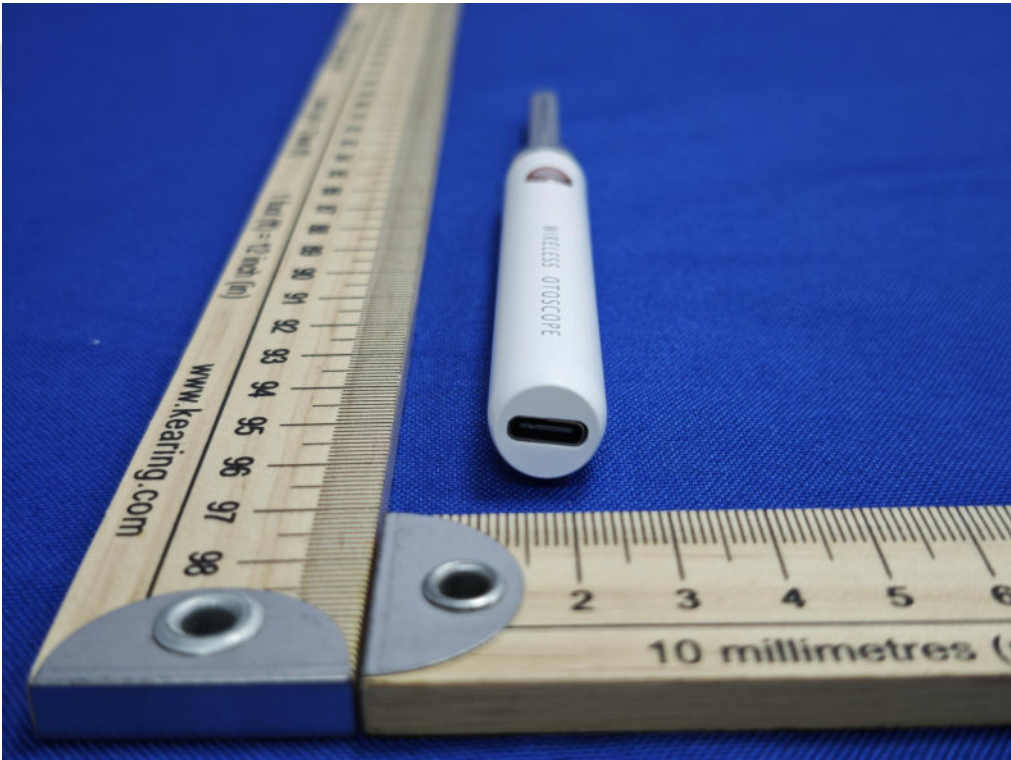
### External Photos of EUT

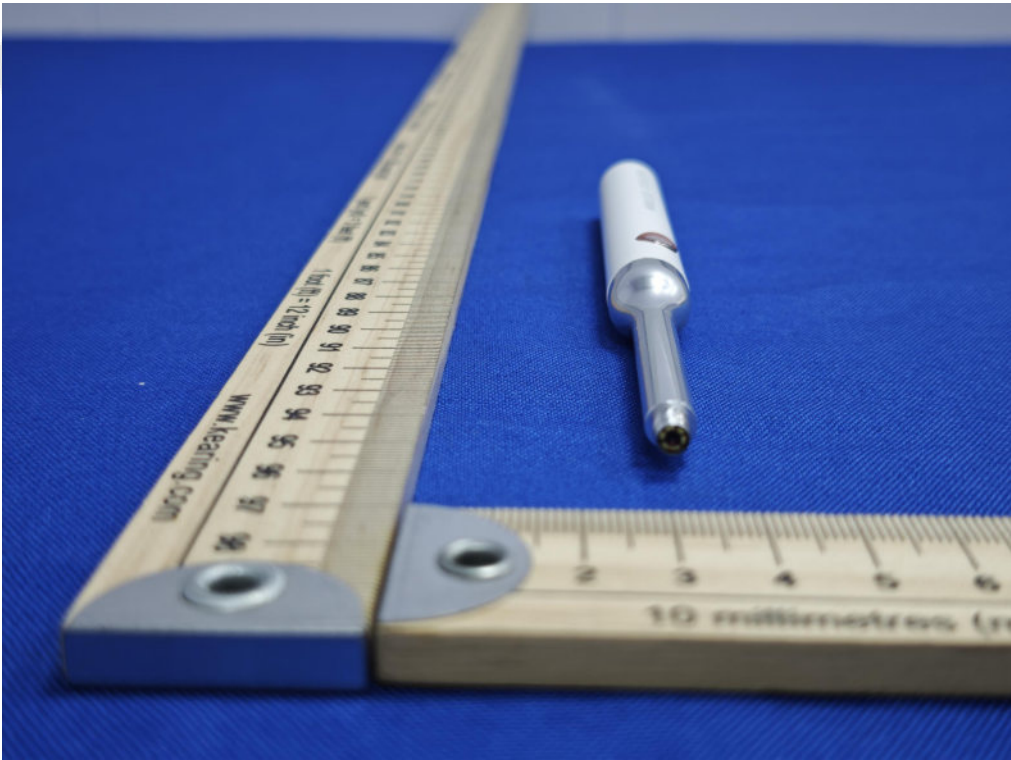
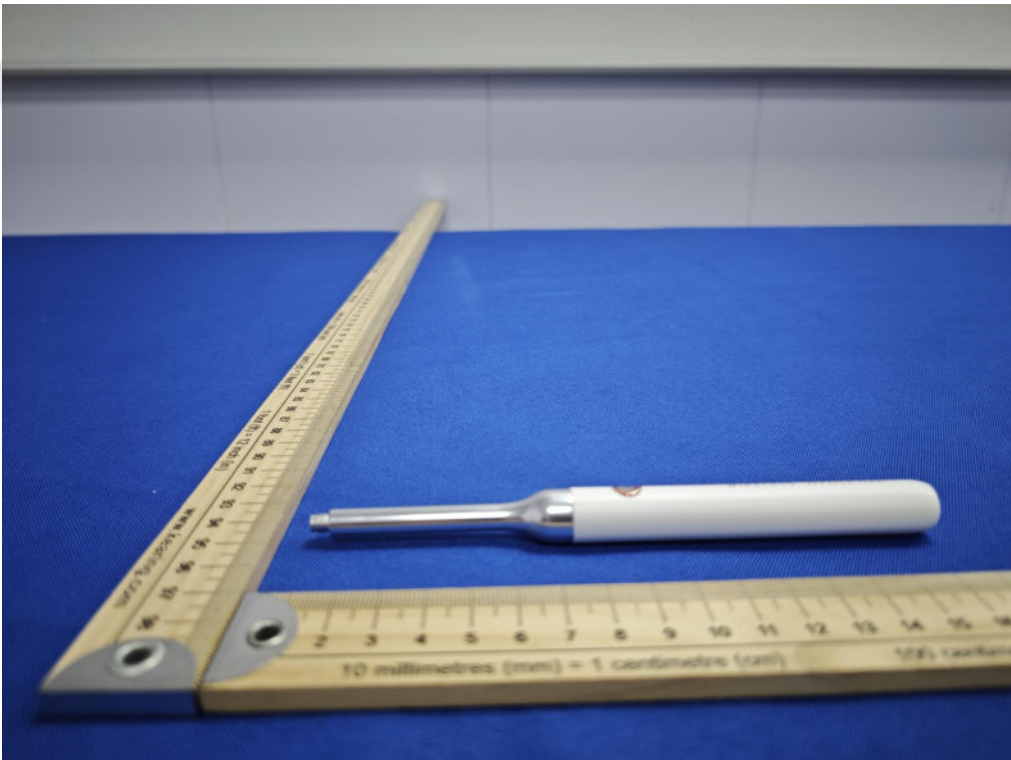






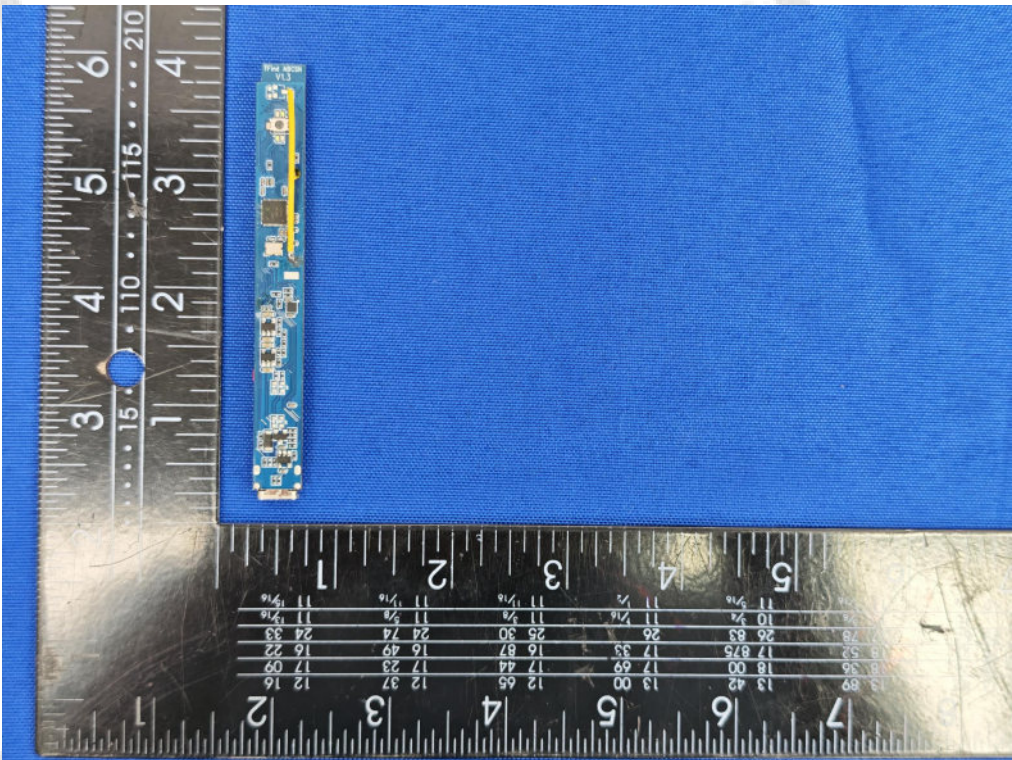
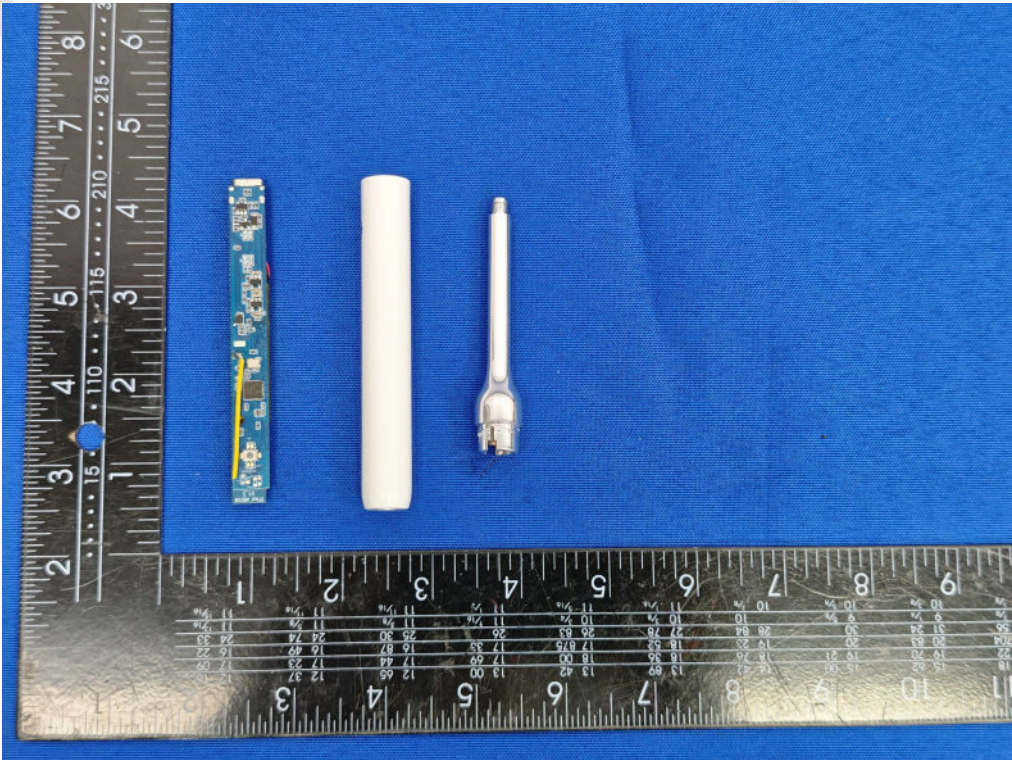




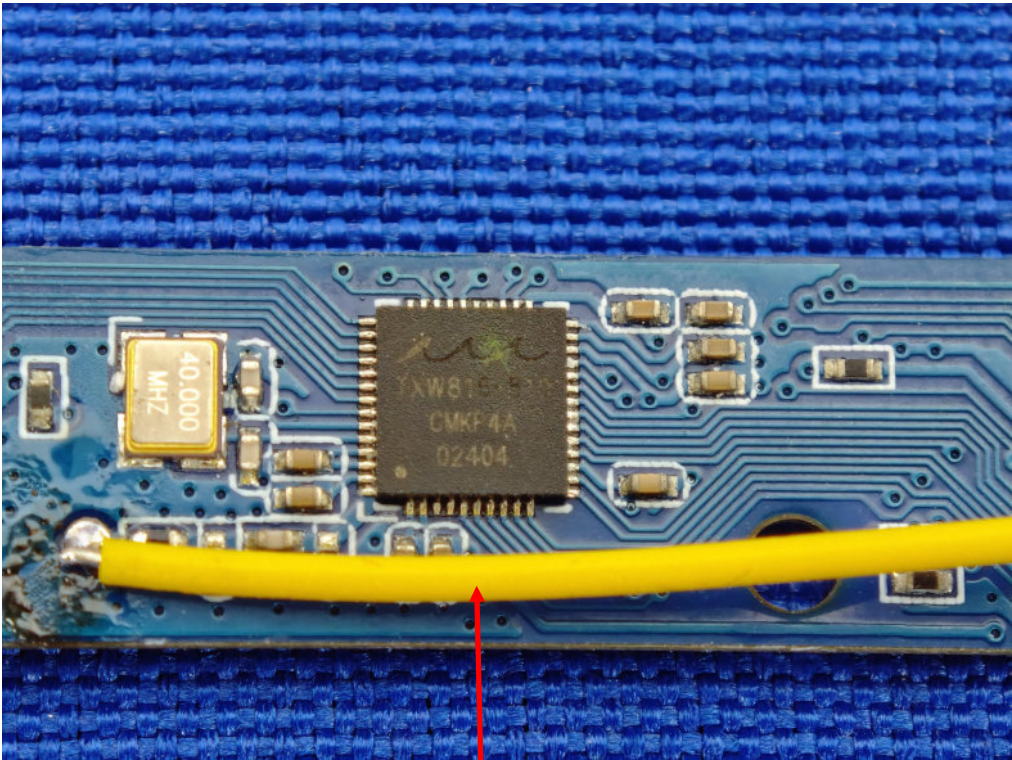
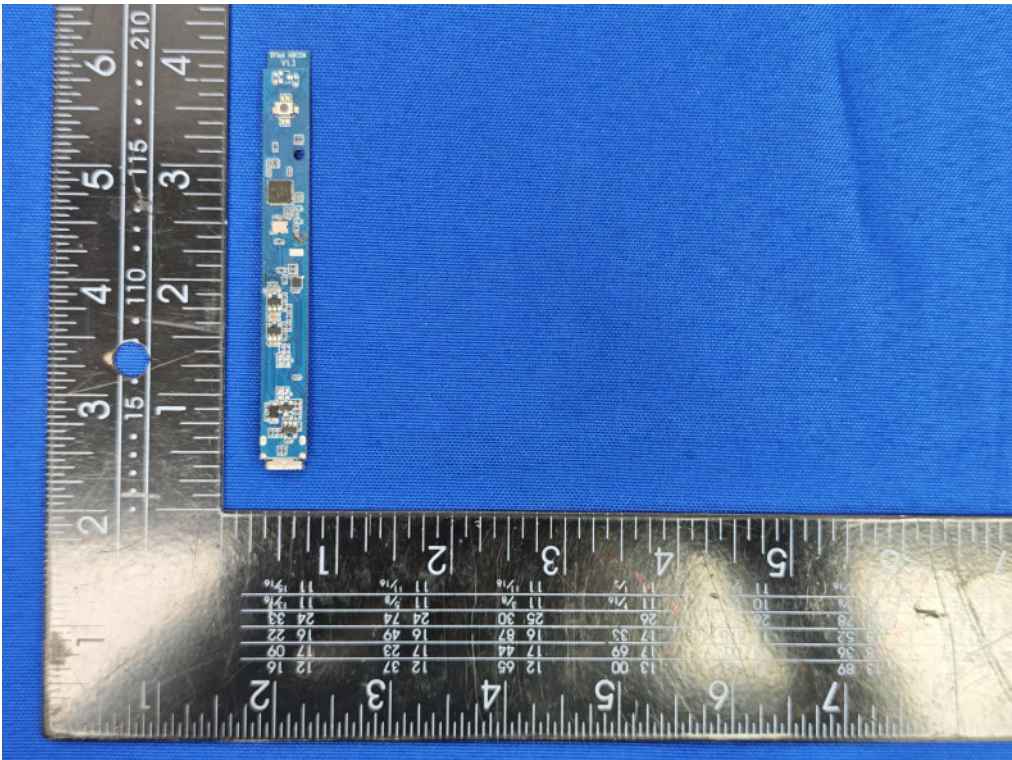




Internal Photos of EUT

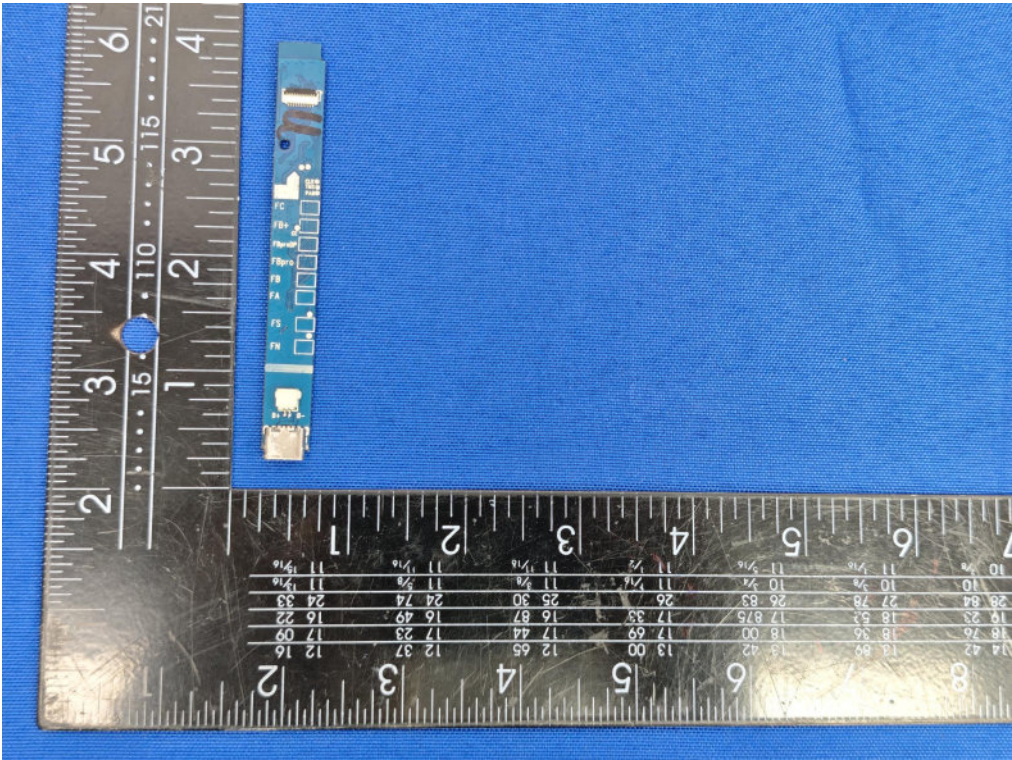
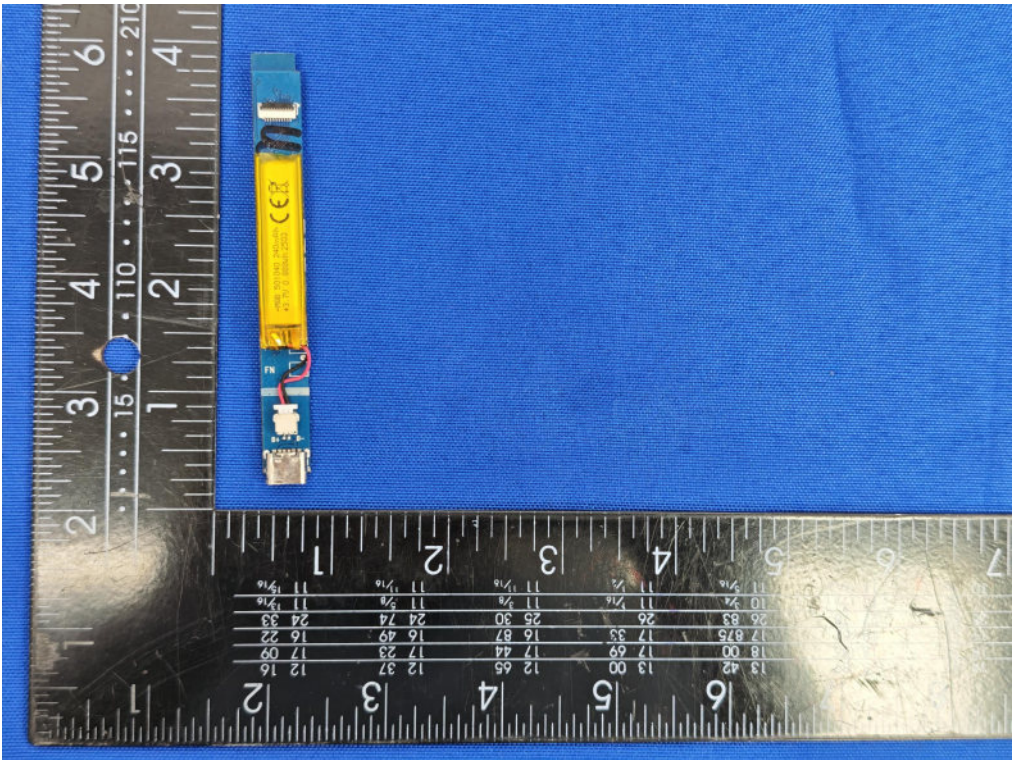




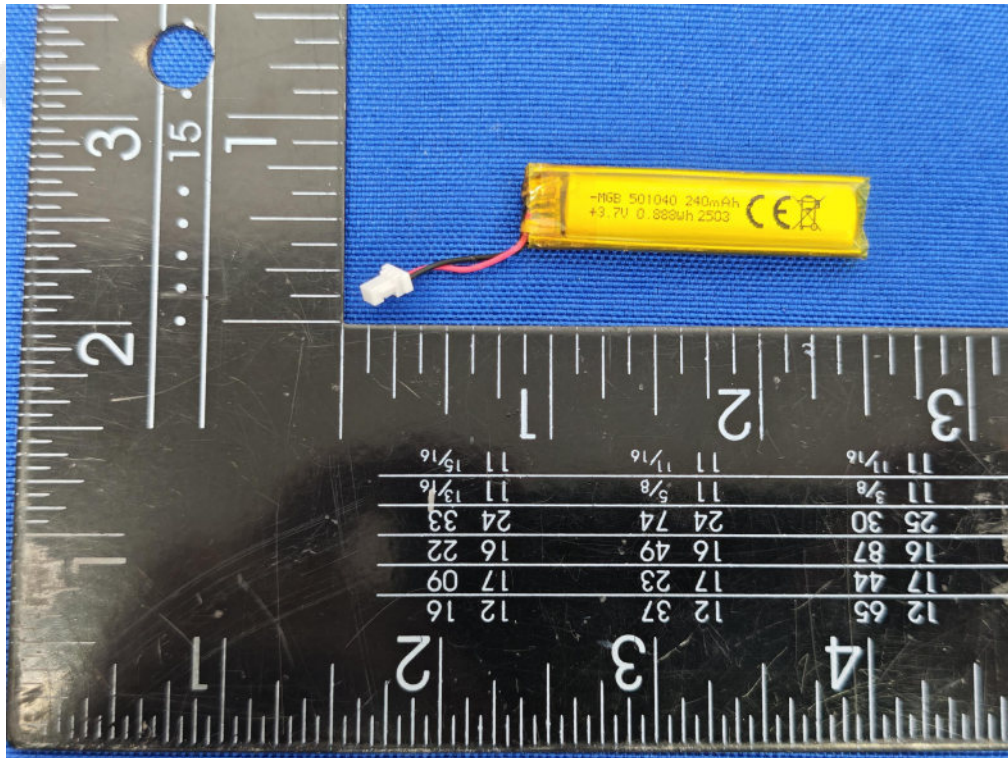


2.4G Wi-Fi Antenna









\*\*\*\*\* End of Report \*\*\*\*\*