



## Laser Engraver ETLR001/002/003/004 USER'S MANUAL

### Operation video inside the TF card

Inside the TF card with Manuals, teaching videos.



[русская версия в карточке](#)

[Die deutsche Version ist in der TF Karte](#)

[La versión en español está en la tarjeta TF](#)

[한국어 버전은 TF 카드에 있어요.](#)

[La version française est sur la carte TF](#)

[La versione italiana è nella scheda TF](#)

[A versão em português está no cartão TF](#)

[De Nederlandse versie staat in de TF kaart](#)

[Polska wersja znajduje się w karcie TF](#)

[Wersja szwedzka jest w kartie TF](#)

[日本語版は TF カードに入っています](#)

# Safety warning!!

- 1), Do not irradiate human body or eyes!
- 2), It is forbidden to use it for children or people without practical ability!
- 3), Do not stare at the laser focus for a long time, and wear goggles!
- 4), Do not engrave on the mirror, otherwise the reflection will burn out the laser!
- 5), Personnel must be present during laser engraving!
- 6), Metal, stone, ceramic, glass, mirror can not be engraved! Transparent and transparent materials need to be painted black before engraving!

## Common Problems Guide

### 1, During the carving process, there is no laser coming out from under the laser head.

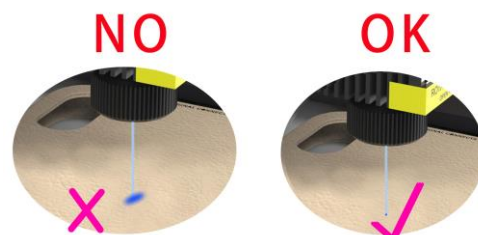
- (1), First, check if the indicator light on the laser head is on. If the light is not on, please check if the laser wire is connected properly and if the power supply is connected properly.
- (2), Check if the switch of the engraving machine is turned off. When it is turned off, the yellow light on top will light up, and when it is turned on, the blue light on top will light up.
- (3), If the light above the laser head is blue, but there is no laser light coming out from the laser head, it indicates that the laser is damaged

### 2, The pattern marks of laser engraving are not clear, or the pattern cannot be engraved.

(1), Check if the laser power is set to 100% when the APP generates carving files. If not, it needs to be set to 100%.

(2), Check if the laser is properly focused, adjust the spot size by rotating the laser adjustment knob, and adjust the light to the smallest spot, as shown in the picture on the right.

**(Adjusting the focus is very important !!!!! it determines whether the engraving can be successful and determines the effective)**



### 3, Unable to read the memory card on the app.

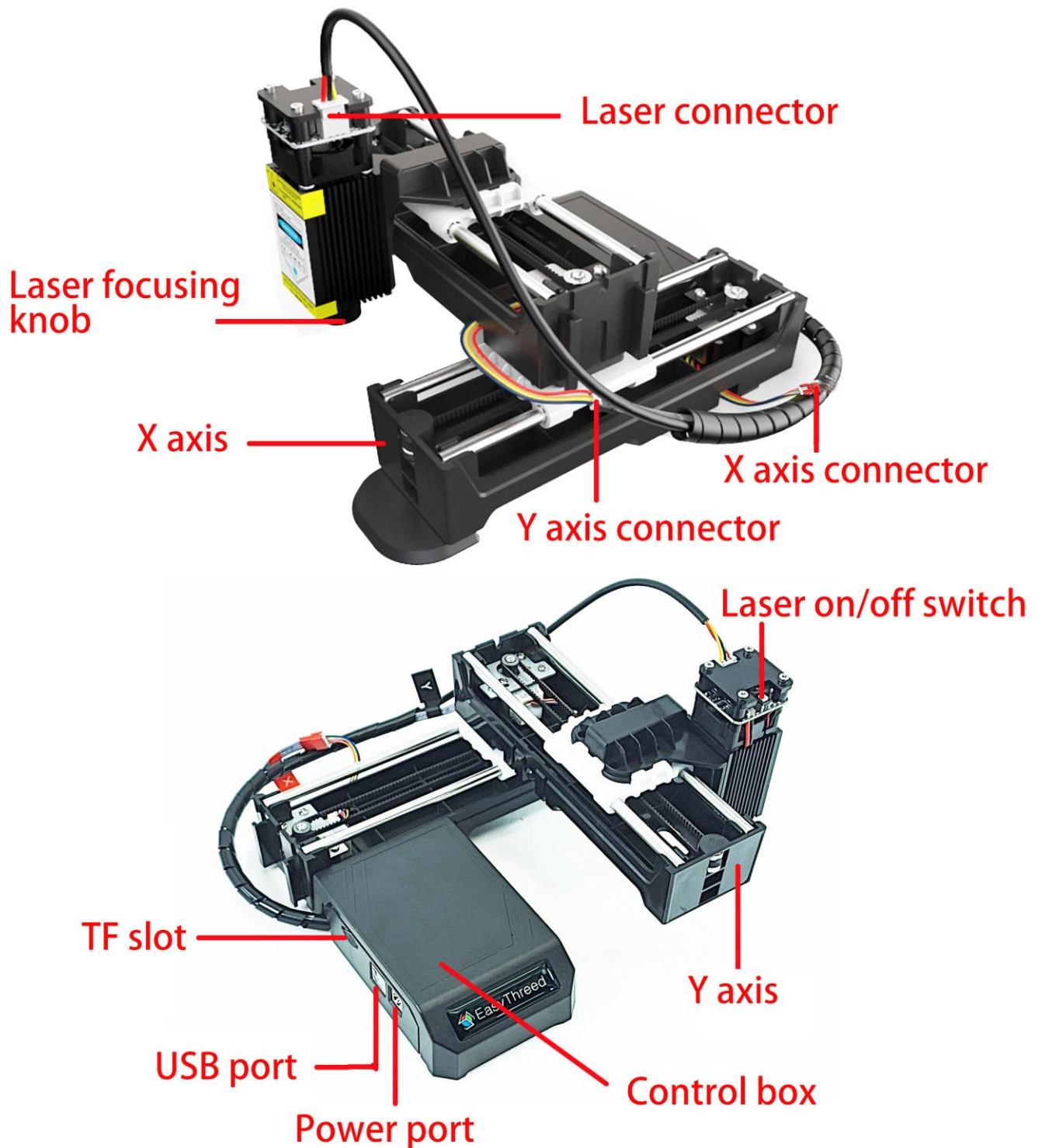
- (1), Format the TF card to FAT32 format on the computer.
- (2), If the TF card cannot be recognized after formatting, then you need a new TF card.

### 4, The laser head does not move.

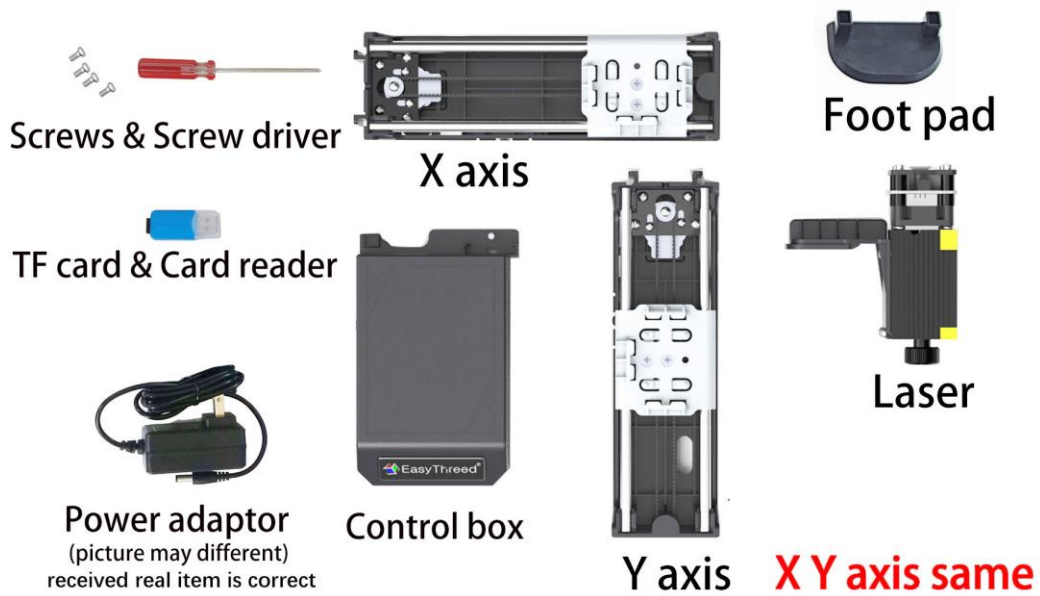
- (1), Check if the XY axis motor wire is properly connected, and you can reinsert the motor wire connector.
- (2), If the wiring is normal, it indicates that the motor is broken and needs to be replaced with a new one.

# Laser Engraver install

## 1) , introduction.



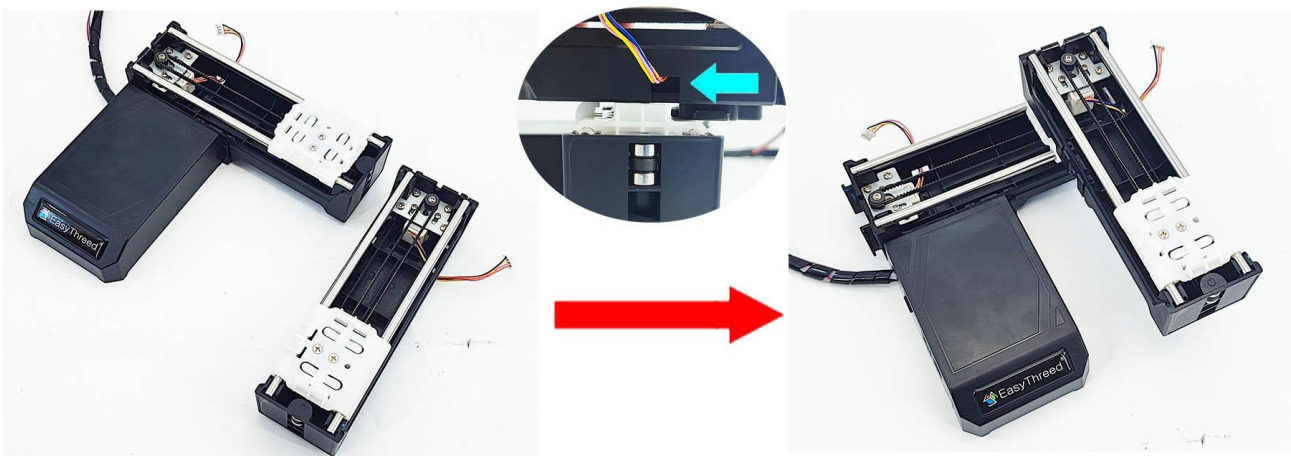
## 2) , install.



1, Assemble the X-axis and control box. Insert the X-axis on the edge of the control box base as shown in the figure.

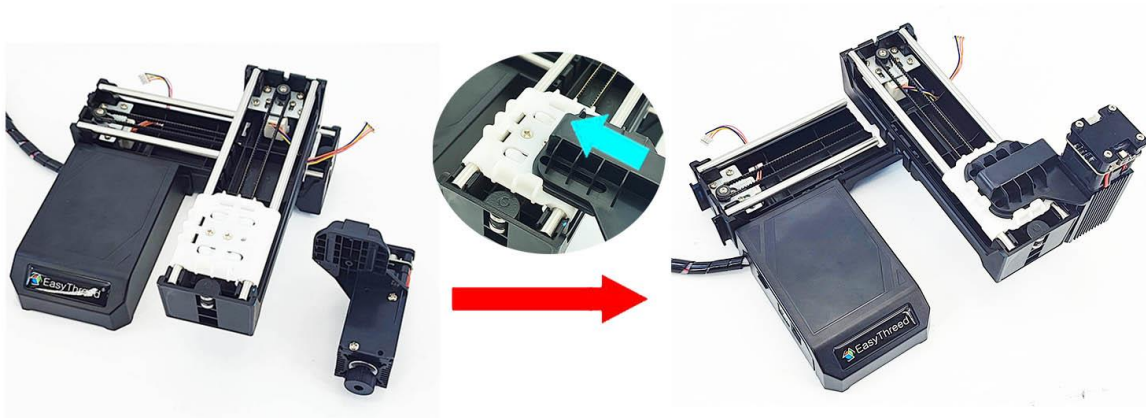


2, assemble with the Y-axis and snap the Y-axis into the white snap position on the X-axis.

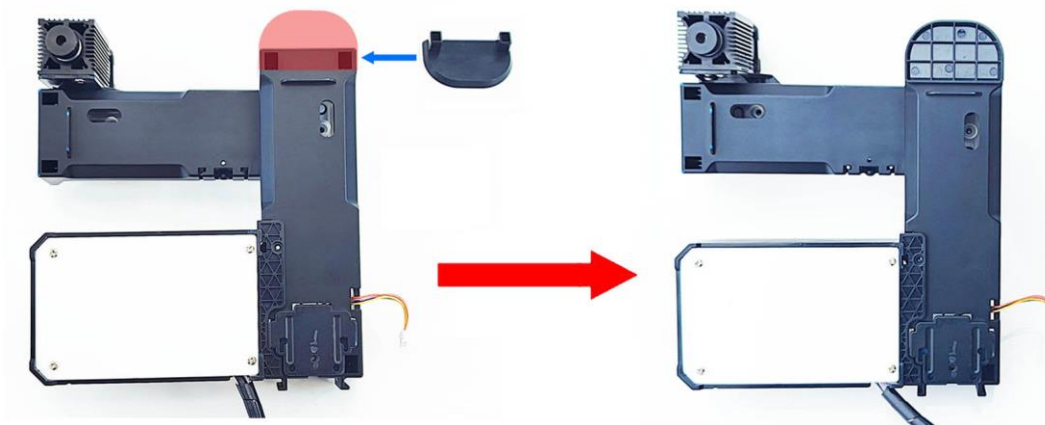




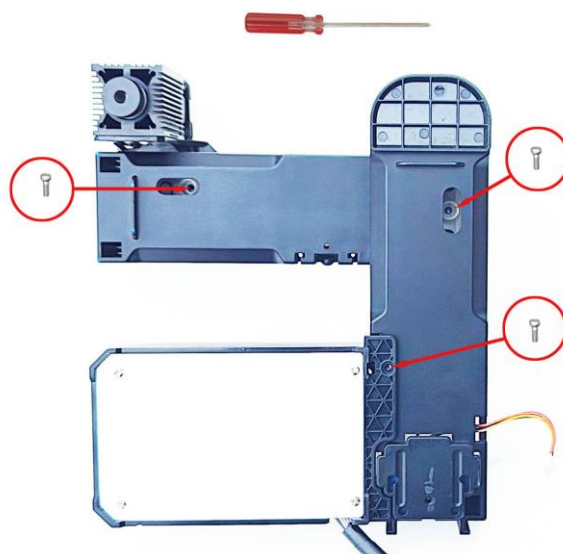
3, Install the laser head.



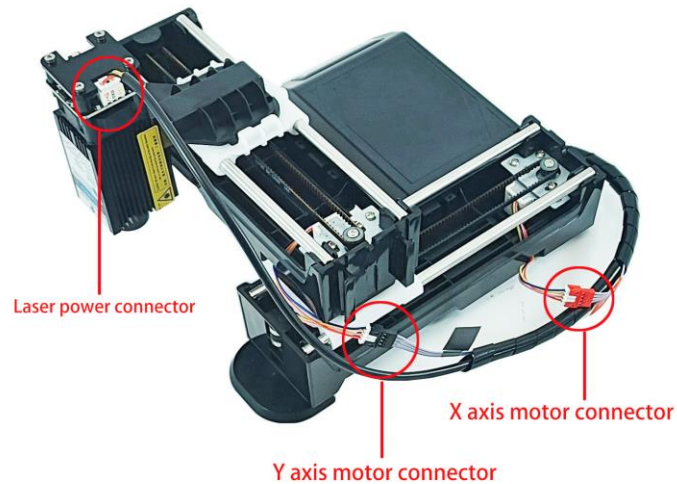
4. Install the foot pad.



5, Fix with screws, using screw driver to secure at 3 positions as shown in the figure. Be sure to lock the screws tightly



6, Connect the X-axis motor, Y-axis motor and the laser head.



7, Insert TF card correctly, connect power adaptor



## **Mobile APP engraving Operation Guide**

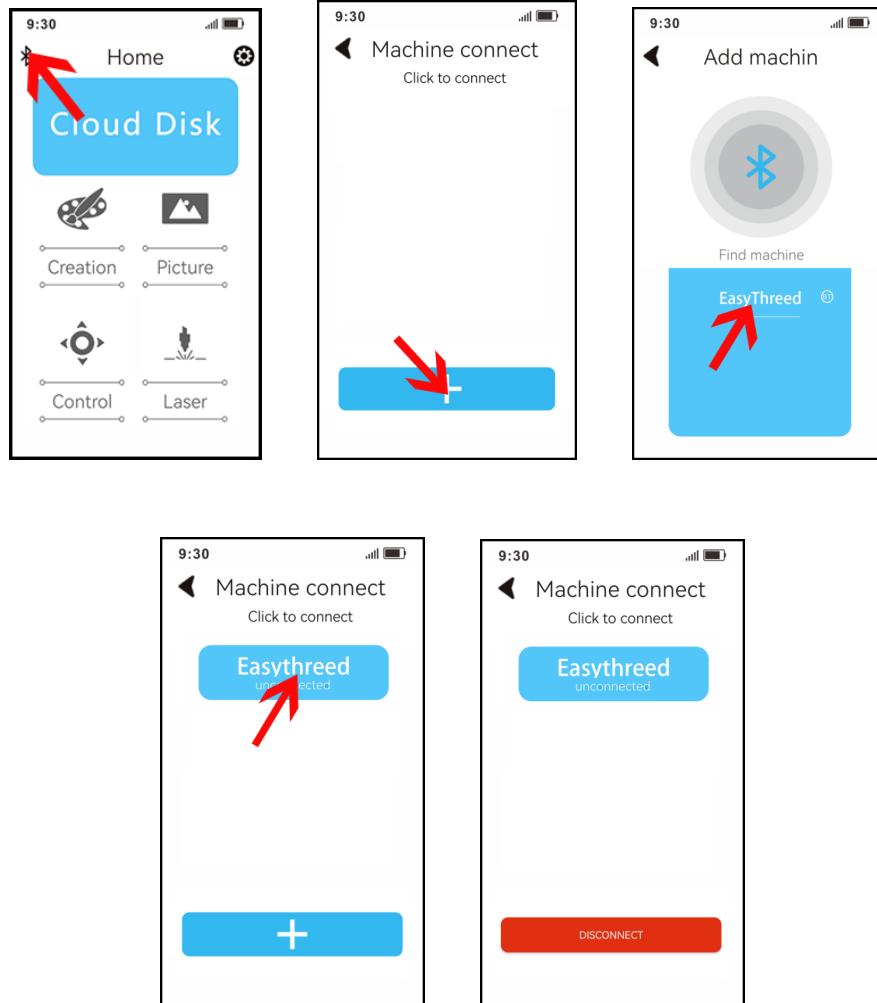
1, There are several methods to install the app on your phone.

1), You can search for “EasyThread” in the Apple and Android APP stores to download and install.

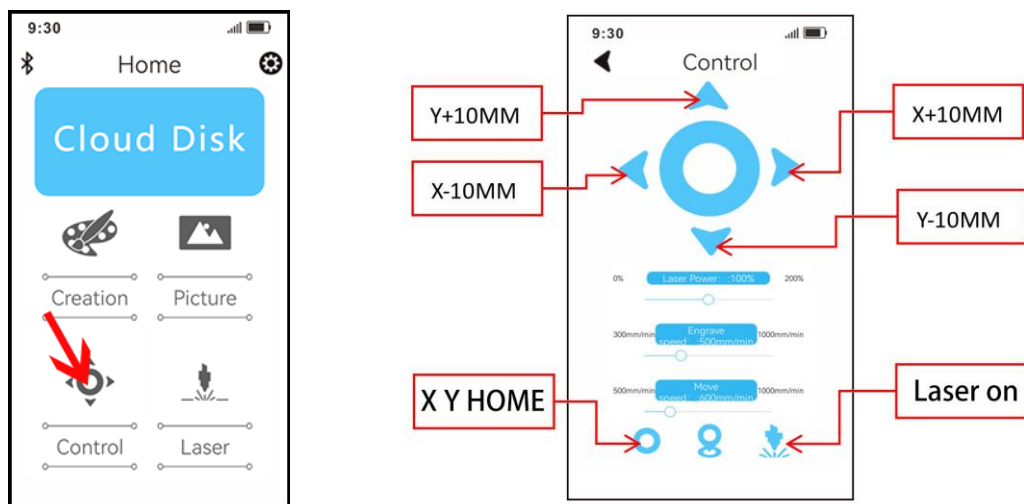
2), Android phones can also be downloaded and installed on the official website [www.easythreed.com](http://www.easythreed.com) (Open website in browser).



2, Click on the Bluetooth icon, click the "+" to search for the machine, and select the machine to connect.



3, Click "Control" to control the movement of the XY axis, HOME. (To Check if the machine and laser are working properly)

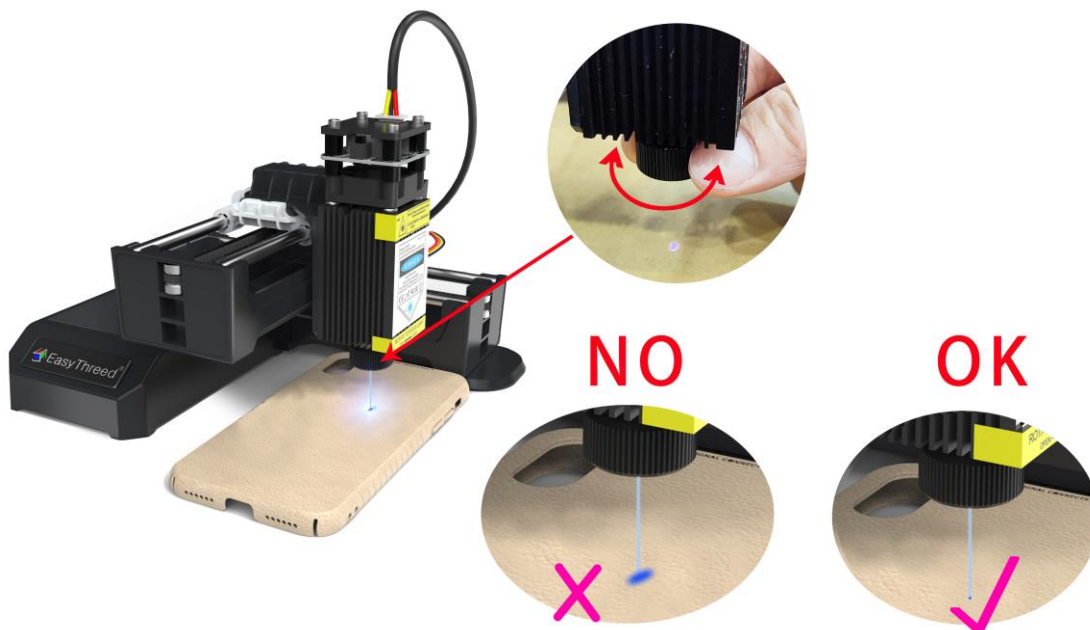


4, Adjust the laser focal length, rotate the knob to adjust laser point to the smallest point.

(1), APP connect to machine first, click " control", and click the laser icon turn on the laser.



(2) Firstly, put the object that needs to be engraved under the laser, and then rotate the knob to adjust the laser spot in the smallest point.



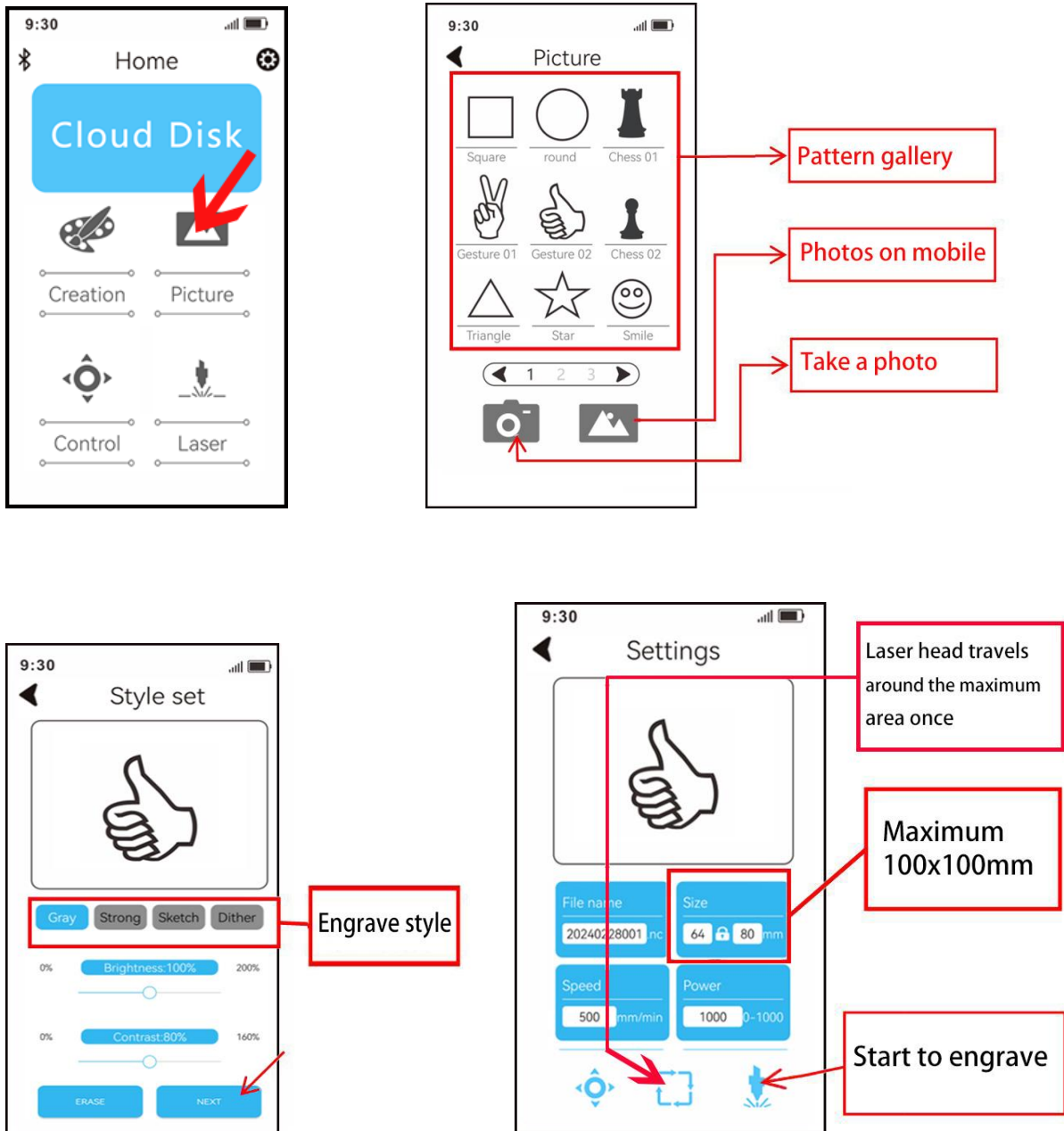
Attention: The engraved surface need be flat



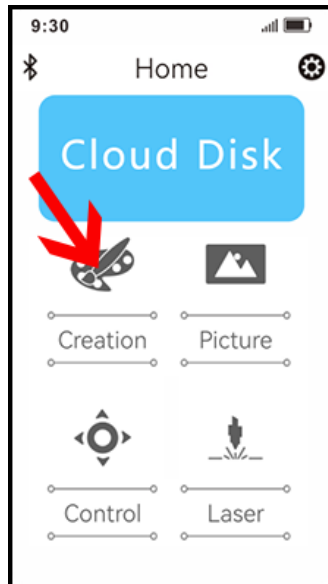
After the adjustment is completed, you can start using the mobile APP to control the laser engraver machine and start engraving



5, Image engraving: Click on the homepage image - select image samples/album images/camera photography – engrave style choose - parameter confirmation (confirm size, speed, power) - click on slice upload - wait for successful upload confirmation to start engraving.



6, Creating pattern: Click "Creation" create hand-painted patterns/text/QR code engraving - engrave style choose - Parameter confirmation (confirm size, speed, power) - Click on slice upload - start to engrave (note: during creation, hand drawn and text input can be combined and typesetting, text input can move position, hand drawn cannot move position).



Note: Handdrawn and text input can be overlaid for layout. Handdrawn cannot be moved, Text input can be moved.

#### Engraving text

When entering text, line breaks are not allowed. If you want to display it in different rows, you can enter it multiple times and then move the text.



Hand drawn area  
Display area

After creation then NEXT

Generate QR code



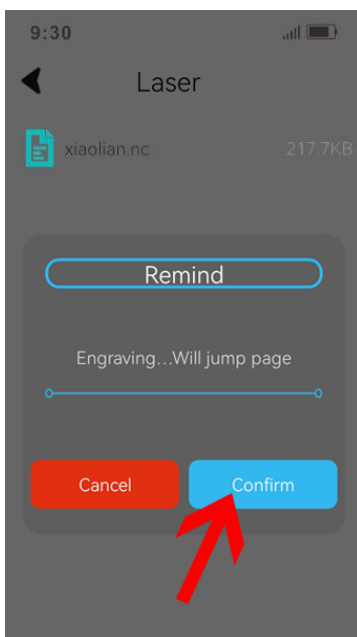
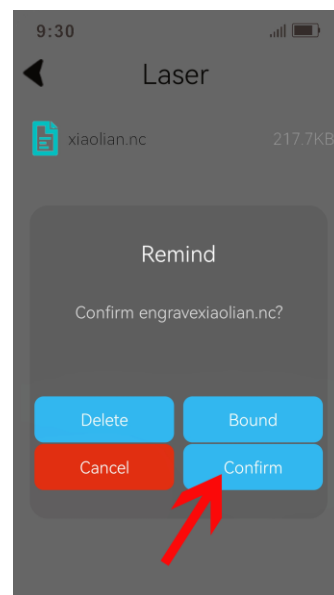
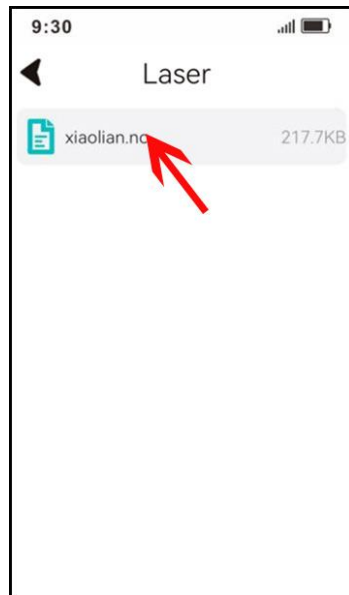
Engrave style choose



Maximum  
100\*100mm

Upload to machine  
start to engrave

7, Choose file in TF card to engrave: On the APP homepage, Click "Laser", you can select the current file in the TF card of the machine for engraving , (on the computer, you can process the file and put it into the card, then use the mobile APP to select the file for engraving, and you can also delete the file in the TF card).



**After-Sales Contact:**  
**SHENZHEN EASYTHREED TECHNOLOGY CO.,LTD**  
**www.easythreed.com**  
**info@easythreed.com**  
**WhatsApp: +8613823704046**

## FCC Warning Statement

Changes or modifications not expressly approved by the party responsible for compliance could void the user's authority to operate the equipment. This equipment has been tested and found to comply with the limits for a Class B digital device, pursuant to Part 15 of the FCC Rules. These limits are designed to provide reasonable protection against harmful interference in a residential installation. This equipment generates uses and can radiate radio frequency energy and, if not installed and used in accordance with the instructions, may cause harmful interference to radio communications. However, there is no guarantee that interference will not occur in a particular installation. If this equipment does cause harmful interference to radio or television reception, which can be determined by turning the equipment off and on, the user is encouraged to try to correct the interference by one or more of the following measures:

- - Reorient or relocate the receiving antenna.
- - Increase the separation between the equipment and receiver.
- - Connect the equipment into an outlet on a circuit different from that to which the receiver is connected.
- - Consult the dealer or an experienced radio/TV technician for help.

This device complies with part 15 of the FCC Rules. Operation is subject to the following two conditions: (1) This device may not cause harmful interference, and

(2) this device must accept any interference received, including interference that may cause undesired operation.

### RF Exposure Statement

To maintain compliance with FCC's RF Exposure guidelines, This equipment should be installed and operated with minimum distance of 20cm the radiator your body. This device and its antenna(s) must not be co-located or operation in conjunction with any other antenna or transmitter.