



# **Print Server**

## Quick User Guide



Thank you for choosing Xiiaozet products. Before getting started, please read this manual carefully for the best performance. This manual is for Windows users, but Mac users can find tutorials on our website.

If you need help, visit our Support page on the official website. You'll find drivers, FAQs, and videos there. Can't find what you need? Just shoot us an email.

We're here to enhance printing solutions, simplify tasks, and make printing easy for you, even for those without professional IT knowledge. Our goal is to provide the best possible support, ensuring you can enjoy using our products.

Official Website: [www.xiiaozet.net](http://www.xiiaozet.net)

Support Email: [support@xiiaozet.net](mailto:support@xiiaozet.net)

## Contents

Use of Trademarks, Registered Trademarks, and Other Protected Names and Symbols .....	2
Safety Measures .....	3
1. Product Introduction .....	3
1.1 Product Detail .....	5
1.2 Explanation of the Indicator Lights .....	5
1.3 Product Specification .....	6
2. Install Hardware .....	7
3. Configure Print Server to Connect to Local Network	7
3.1 Method One; Wired Connection .....	8
3.2 Method Two; Wireless Network Connection ....	9
4. Add Printer to Computer .....	14
5. Warranty Statement .....	19
6. FCC Caution; .....	20

## **Use of Trademarks, Registered Trademarks, and Other Protected Names and Symbols**

This manual may refer to trademarks, registered trademarks, and other protected names and/or symbols of third-party companies unrelated to Xiiaozet. Such references are solely for illustrative purposes and do not imply endorsement of any product or service by Xiiaozet or endorsement of the product(s) covered in this manual by the respective third-party company. Regardless of any explicit acknowledgment elsewhere in this document, Xiiaozet acknowledges that all trademarks, registered trademarks, service marks, and other protected names and/or symbols contained herein and in related documents are the property of their respective owners.

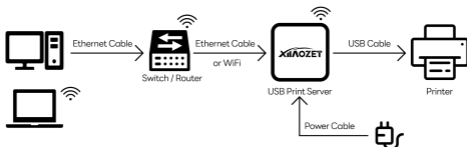
## **Safety Measures**

- Do not make wiring connections while the product and/or electrical lines are energized.
- Position and route cables (including power cables) to prevent electrical, tripping, or safety hazards.

### **1. Product Introduction**

The Print Server converts standard USB printers into network printers, enabling multiple computers to print via a shared printer within the same network. This enhances printing efficiency and convenience by facilitating shared access. Additionally, it is compatible with over 95% of printer models available in the market.

## How it work?



Setting up the print server involves three main steps:

Step1: Install the hardware (see section 2).

Step2: Configure the print server (see section 3).

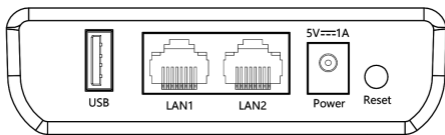
Step3: Set up "Add Printer" on your computer (see section 4).

If anything is missing or damaged, please reach out to us: [\*\*support@xiaoze.net\*\*](mailto:support@xiaoze.net)

If you find this manual confusing, check out our website for a clearer tool or video tutorial:

[\*\*www.xiaoze.net\*\*](http://www.xiaoze.net)

## 1.1 Product Detail



**LK100W**

- ①USB:USB2.0 Connect printer(s)
- ②LAN/LAN1 port: Configure print server or wired network connection
- ③LAN2 port: Wired network connection
- ④5V/1A power port
- ⑤Factory reset button

## 1.2 Explanation of the Indicator Lights

Power	Steady on: printer server powered on
SYS	Slow flashing: system booting up Steady on: device startup completed, normal operation

	Fast flashing; restore factory settings
USB	Steady on; printer connected Not lit; printer disconnected
Cloud	Steady on; Wi-Fi/ Cloud service connection successful
LAN2/LAN1/ LAN	Steady on; normal Ethernet cable connection Not lit; cable disconnection or issues

### 1.3 Product Specification

Model Name	LK100W Print Server
Network Protocols	Wi-Fi: Supports 2.4GHz, IEEE 802.11b/g/n; LAN Ports: 10M/100 Adaptive, Compliant with IEEE 802.3 and IEEE 802.3u standards
Current Voltage	DC 5V ~ 1A

Management Functions	Supports
Print Protocols	RAW protocol , IPP protocol
System Requirements	Windows7 & above, Linux, and macOS (It requires the printer to have the corresponding drivers for these systems.)

## 2. Install Hardware

2.1 Connect the power adapter to the 5V/1A port and the printer to the USB port on the print server.

2.2 Power on the adapter, wait 10-30 seconds, and check for steady POWER and SYS indicators.

## 3. Configure Print Server to Connect to the Local Network

The print server can be connected to the network

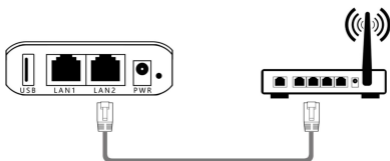
either through a wired or wireless connection.

Note: Please select only one method you prefer for connection.

If you want to use a wired connection to the network, please continue reading on this page.

If you want to use a wireless connection to the network, please turn to **page [9]**.

### 3.1 Method One: Wired Connection



3.1.1 After powering on the print server and connecting the USB device, use an Ethernet cable to connect the LAN1/LAN2 port of print server to the router or switch.

3.1.2 The print server will obtain an IP address assigned by the router's DHCP.

3.1.3 The LAN1/ LAN2 indicator remains illuminated, indicating that the wired network setup is complete.

**Note:** If your local network doesn't utilize DHCP for IP assignment, you'll need to manually set the IP address for the print server. Refer to our official website's video tutorial for detailed instructions.

Congratulations on successfully configuring the print server to connect to the network via a wired connection!

Please turn to **Page[14]** for the "Add Printer" steps.

## **3.2 Method Two: Wireless (WiFi) Network Connection**

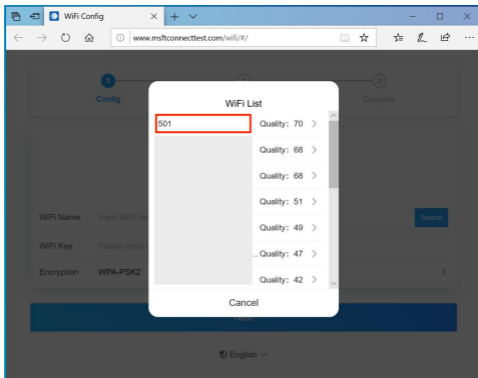
The process can be completed via a computer or a smartphone.(Here are the network configuration

steps for when the printer server is in its initial state.)



3.2.1 Locate and connect to the Wi-Fi network named "**USBServer\_Setup**" from your computer's available networks list.

3.2.2 Once you connect to **USBServer\_Setup**, a network setup page will automatically pop up on your computer or phone.



3.2.3 Simply select your 2.4G Wi-Fi and enter your Wi-Fi password. The printer server will then automatically configure the Wi-Fi parameters.

WiFi Config

www.msftconnecttest.com/wifi/#/

1 Config 2 Check 3 Complete

WiFi Name 310 Search

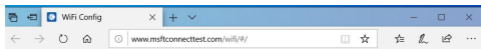
WiFi Key 1 Please input WiFi key

Encryption WPA-PSK2 >

2 Next

English

3.2.4 Wait for about 1 minute, and when the cloud indicator light stays steadily lit, it indicates successful network setup.



WiFi config success

Congratulations! You have successfully configured the print server to connect to the network via a wireless connection!

Please read the following tutorial on how to add a printer to a Windows computer.

## **4. Add Printer to Computer**

For Windows users who want to add the printer using the quick installation tool, please continue reading on this page. (Recommend)

If you need to manually add a printer, please refer to the official website's tutorial.

For macOS users, since there is no quick add tool available, you'll need to manually add the printer. please refer to the official website's tutorial.

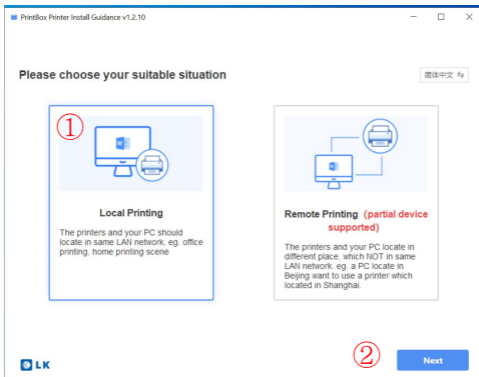
When manually adding a printer, please ensure that your computer has the appropriate printer drivers installed.

### **4.1 Add Printer on Windows Computer Using the Installation Tool**

Download and open the installation tool from the Xiiaozet official website.

Official website: [www.xiiaozet.net](http://www.xiiaozet.net)

### 4.1.1 Open the installation tool and choose "Local Printing," then proceed by clicking "Next."



4.1.2 The installation tool will search for Xiiaozet print servers in the local network. Choose the print server from the search results and click "Next"

**i** Tip: The PrintBox can only be shown on the same LAN network, [Share] can be used for remote printing.

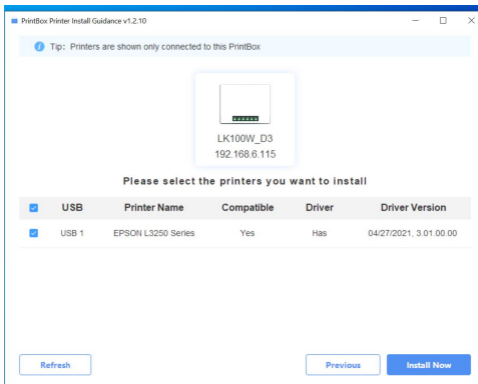
### Please select your PrintBox



②

[Refresh](#)[Add PrintBox Manually](#)[Previous](#)[Next](#)

4.1.3 The installation tool will automatically identify the printer model of the server, detect and match the corresponding driver, and select the printers for installation. Click "Install Now" for immediate installation.

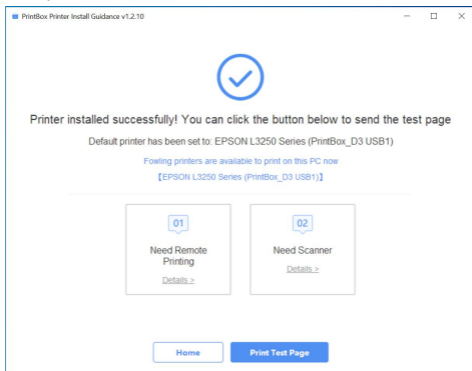


Note: If the installation tool cannot match the printer driver for the identified model, you will need to manually download the printer driver and proceed with installation using the "Add Printer" option.

4.1.4 The tool will create a TCP/IP port for adding printers, download the necessary printer driver,

and proceed with automatic installation.

4.1.5 Once the printer addition process is complete, perform a test print. Successful printing of the test page confirms the completion of printer setup.



Congratulations! You've successfully added the printer using the Quick Print Tool! Simply select the newly added printer when printing.

## 5. Warranty Statement

Our printer server comes with a one-year warranty service, effective from the date of product purchase. During the warranty period, if your product experiences any malfunctions due to manufacturing defects or material issues, we will provide free repair or replacement services.

The warranty covers, but is not limited to, hardware failures, component damages, and manufacturing defects.

The warranty does not cover the following situations:

Damages caused by user error, improper use, or failure to follow the instructions in the user manual.  
Damages caused by accidents, natural disasters, or force majeure events.

Damages caused by unauthorized repairs, modifications, or disassembly.

Damages caused by the product being used beyond its normal operating range.

Products whose warranty period has expired.

If you require warranty service or technical support, please contact our customer service team. We will provide support as soon as possible.

Email: [support@xiiiozet.net](mailto:support@xiiiozet.net)

## **6. FCC Caution:**

This device complies with part 15 of the FCC Rules. Operation is subject to the following two conditions: (1) this device may not cause harmful interference, and (2) this device must accept any interference received, including interference that may cause undesired operation.

Any changes or modifications not expressly approved by the party responsible for compliance could void the user's authority to operate the

equipment.

NOTE: This equipment has been tested and found to comply with the limits for a Class B digital device, pursuant to Part 15 of the FCC Rules. These limits are designed to provide reasonable protection against harmful interference in a residential installation. This equipment generates, uses and can radiate radio frequency energy and, if not installed and used in accordance with the instructions, may cause harmful interference to radio communications. However, there is no guarantee that interference will not occur in a particular installation.

If this equipment does cause harmful interference to radio or television reception, which can be determined by turning the equipment off and on, the user is encouraged to try to correct the interference by one or more of the following

measures:

- Reorient or relocate the receiving antenna.
- Increase the separation between the equipment and receiver.
- Connect the equipment into an outlet on a circuit different from that to which the receiver is connected.
- Consult the dealer or an experienced radio/TV technician for help.

To maintain compliance with FCC's RF Exposure guidelines, This equipment should be installed and operated with minimum distance between 20cm the radiator your body; Use only the supplied antenna.