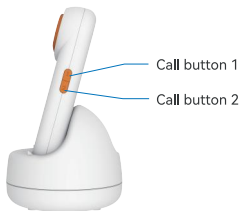
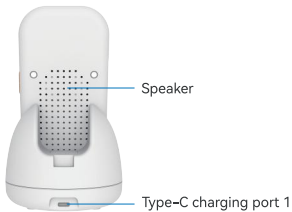




# Video Calling handheld Camera

## User Manual

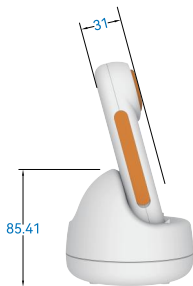
## Appearance



## Device size



( Unit: millimeter )



# User Manual


## 1. Power on

## 2. Im Cam app installation

Please scan the QR code on the right side, or search for "Im Cam" on the App Store or Google Play and download and install it.




## 3. Registration and login



### Welcome

Continue browsing after logging in

Email  
Enter

Password  
Enter 

[Forgot password](#)

[Log in](#)

[Register](#)

11:06

←

### REGISTER

Email  
Enter your email

Verification code  
Enter verification code [Get](#)

Password  
Enter password

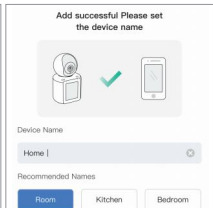
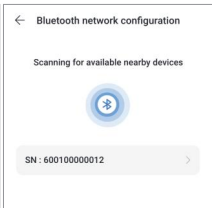
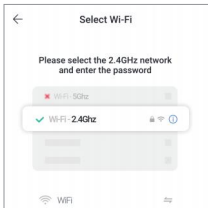
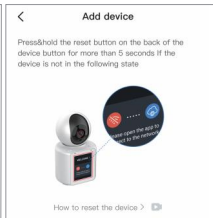
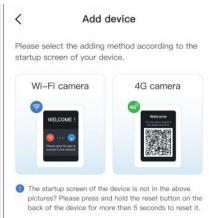
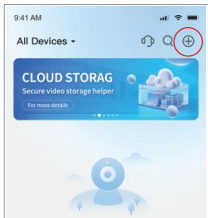
Select region  
America >

☐ I have read and agreed to the user agreement and privacy policy

[Register](#)

## 4-1. Add Wi-Fi device

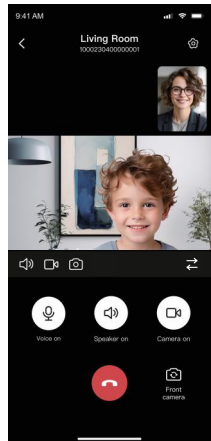
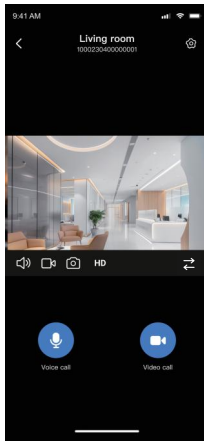
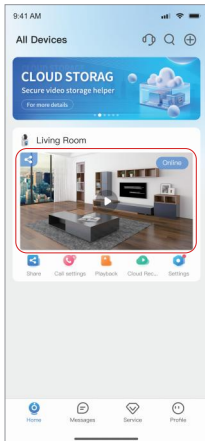
- After entering the homepage, click the [+] icon on the upper right corner or the [Add Device] button to enter the device addition page.
- According to the prompts on the page, select the type of camera.
- Ensure that the device is in the network pairing state. For Wi-Fi devices, select **2.4G Wi-Fi** and enter the Wi-Fi password to proceed to the next step.
- After the addition is successful, you can enter or select the device name to complete the binding.



## 5. Two-way video call

### Method 1: Video call between mobile phone and device

- On the homepage, click the device you need to view to enter the device video page.
- Click [Video Call] to have a video call with the device.



### Method 3: Voice wake-up to call the mobile phone

- a) Please use "Hello Kuka" to wake up the device.
- b) After the device responds "Hi", respond the command.
- c) The mobile phone will receive a call reminder. Click the green button to answer.

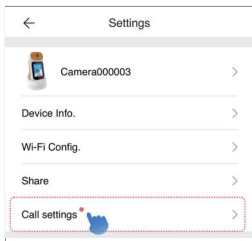
① Hello Kuka !

② Hi !

③ Call phone / Call camera /  
Screen Off



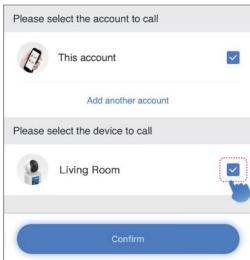
## Method 4: Device-to-Device video calling



① Click the call settings on the device settings page.



② Select the button to be configured and click Settings.



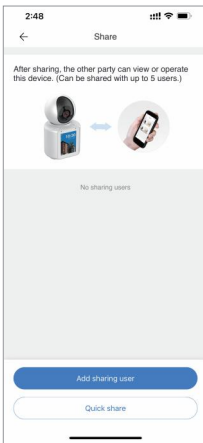
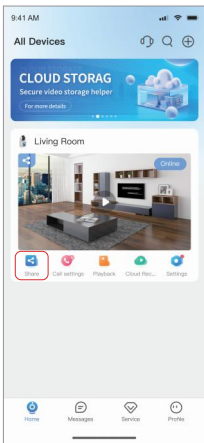
③ Check the devices that need to be called and click Confirm.





## 6. Share the device with other users

- Click the [Share] icon of the device to enter the device settings page, and click [Add Sharing User] to enter the user name and account name for sharing.
- You can also click [Quick Share] to save the QR code image or copy the password for quick sharing.
- After the sharing is completed, the device can call this user.



## FCC Statement

Note: This equipment has been tested and found to comply with the limits for a Class B digital device, pursuant to part 15 of the FCC Rules. These limits are designed to provide reasonable protection against harmful interference in a residential installation. This equipment generates, uses and can radiate radio frequency energy and, if not installed and used in accordance with the instructions, may cause harmful interference to radio communications. However, there is no guarantee that interference will not occur in a particular installation. If this equipment does cause harmful interference to radio or television reception, which can be determined by turning the equipment off and on, the user is encouraged to try to correct the interference by one or more of the following measures:

- Reorient or relocate the receiving antenna.
- Increase the separation between the equipment and receiver.
- Connect the equipment into an outlet on a circuit different from that to which the receiver is connected.
- Consult the dealer or an experienced radio/TV technician for help.

This device complies with part 15 of the FCC Rules. Operation is subject to the following two conditions: (1) This device may not cause harmful interference, and (2) this device must accept any interference received, including interference that may cause undesired operation.

Any changes or modifications not expressly approved by the party responsible for compliance could void the user's authority to operate the equipment.

The device has evaluated to meet general RF exposure requirement. The device can be used in portable exposure without restriction.