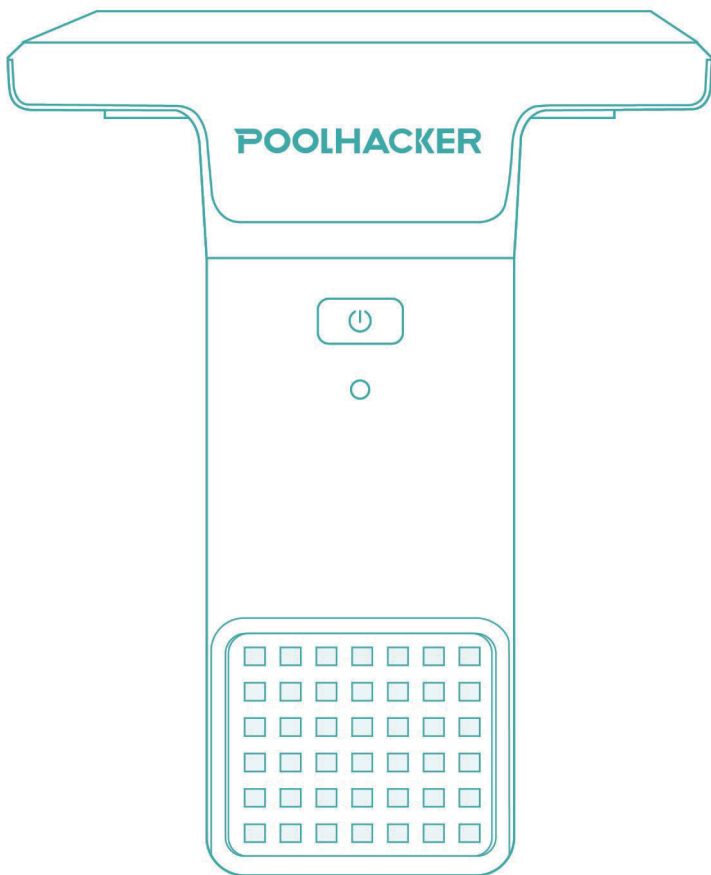


POOLHACKER

Poolside Solar Light

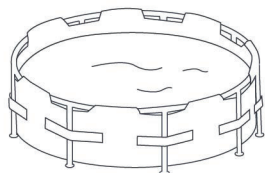
Instruction Manual



EMBRACE THE SUMMER'S BRILLIANCE

What's in the Box?

YC040 | For Metal Frame Above-Ground Pool



Solar Panel *1

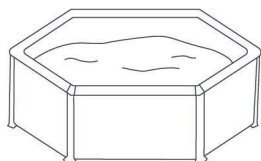


LED Light Panel *1



Remote *1

YC044 | For Steel Wall Above-Ground Pool



Solar Panel *1

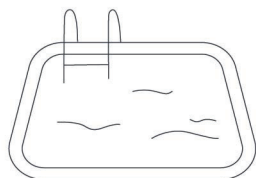


LED Light Panel *1



Remote *1

YC046 | For In-ground Pool



Solar Panel *1



Mounting Base *1



LED Light Panel *1

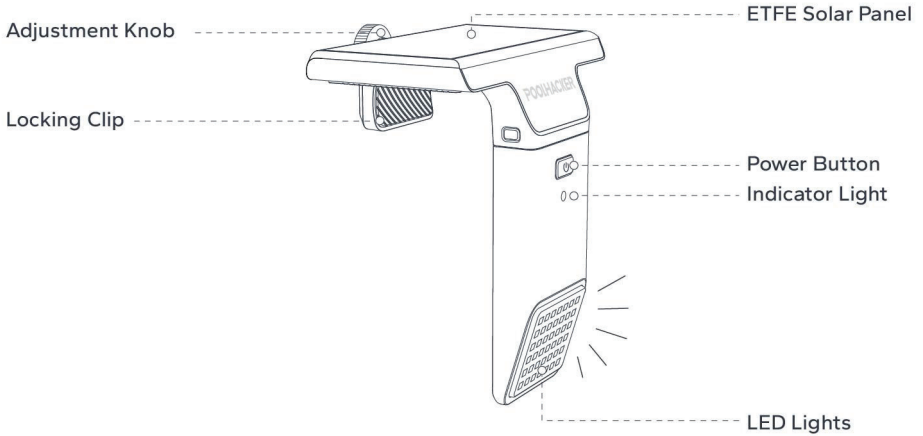


Remote *1

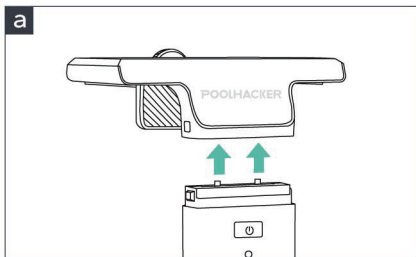


Adhesive *1

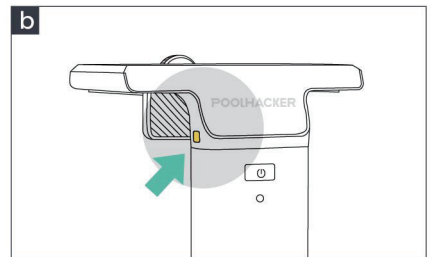
Components Name



Operating Instructions



Insert the LED light into the solar panel.

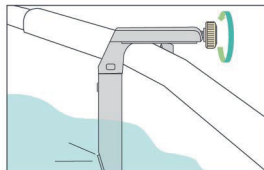


Make sure the side locking clips fully pop out to ensure a stable connection.



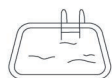
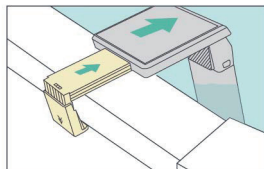
For Metal Frame Above-Ground Pool Only

Hang the pool light on the pool crossbar, with the LED light submerged in the water. Tighten the knob clockwise to secure it in place.

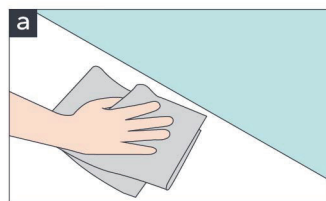


For Steel Wall Above-Ground Pool Only

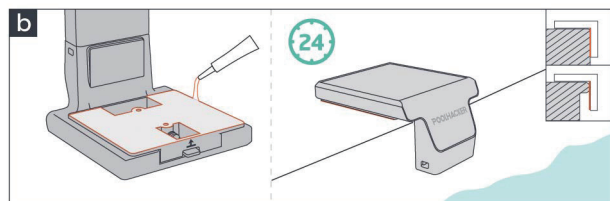
Pull the locking clip to secure the pool wall light onto the pool top rail, with the LED light submerged in the water.



For In-Ground Pool Only

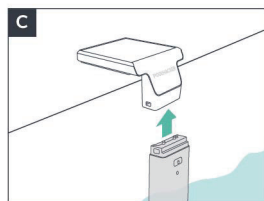


Clean the installation area, ensuring the surface is level with no bumps, water stains, or sand.



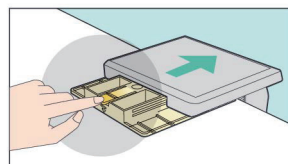
Apply adhesive to the base, align the solar panel with the pool edge, and secure it. Let it sit for 24+ hours to fully bond.

Tip: Place a heavy object on the solar panel for better adhesion.

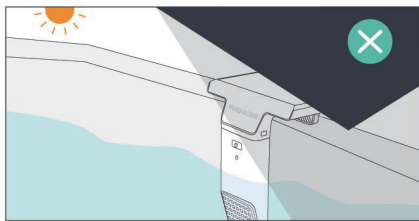
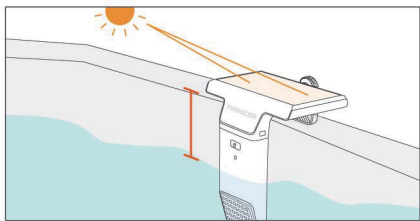


After 24 hours, insert the light into the solar panel and ensure the locking clips snap out securely.

How to disassemble?



Press the clip on the base and pull out the pool light.



- 💡 This product operates on solar power, so do not place it in shaded areas and avoid obstructions around it to ensure optimal solar charging efficiency.
- 💡 Increase the pool water level so the light is below the water's surface for optimal viewing.

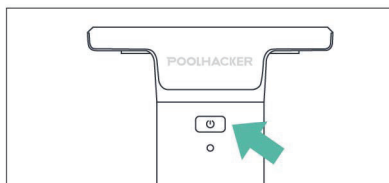
Panel Button Operation

- ① Press and hold the "⏻" for 1 second to turn on the light.
- ② Press the "⏻" again to cycle through the following lighting modes: White, Red, Green, Blue, Orange, Yellow, Light Green, Cyan, Purple, Pink, Flash, Strobe, Smooth, Fade...
- ③ To turn off, press and hold the "⏻" for 1 second.

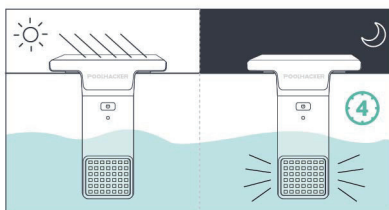
Indicator Light Meaning

Solid White Light: Solar charging in progress

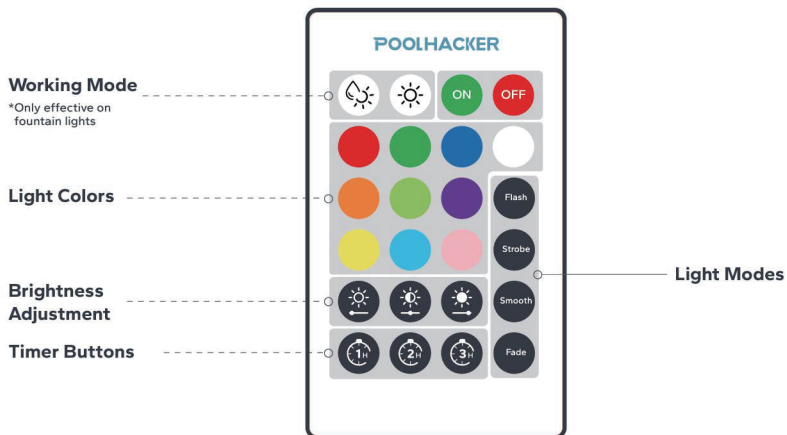
Flashing Red Light: Low battery warning



- 💡 The poolside solar light will automatically sense the ambient light and turn on when it is dark, and turn off after 4 hours of operation by default.



Remote Control Functions



- ① For first-time use, please remove the battery insulation tab from the remote control.
- ② The maximum remote control distance is 98 ft.
- ③ The light automatically turns off after 4 hours of operation, and the timer function of the remote control is effective only for the current session.
- ④ After the default 4-hour shutdown, press and hold the unit button or remote to turn it on, and the poolside solar light will restart the 4-hour timer.

FCC Warning Statement

Changes or modifications not expressly approved by the party responsible for compliance could void the user's authority to operate the equipment. This equipment has been tested and found to comply with the limits for a Class B digital device, pursuant to Part 15 of the FCC Rules. These limits are designed to provide reasonable protection against harmful interference in a residential installation. This equipment generates uses and can radiate radio frequency energy and, if not installed and used in accordance with the instructions, may cause harmful interference to radio communications. However, there is no guarantee that interference will not occur in a particular installation. If this equipment does cause harmful interference to radio or television reception, which can be determined by turning the equipment off and on, the user is encouraged to try to correct the interference by one or more of the following measures:

- Reorient or relocate the receiving antenna.
- Increase the separation between the equipment and receiver.
- Connect the equipment into an outlet on a circuit different from that to which the receiver is connected.
- Consult the dealer or an experienced radio/TV technician for help.

This device complies with part 15 of the FCC Rules. Operation is subject to the following two conditions:

- (1) This device may not cause harmful interference, and
- (2) this device must accept any interference received, including interference that may cause undesired operation.

The device has been evaluated to meet general RF exposure requirement. The device can be used in portable exposure condition without restriction.

Poolhacker Sync

When you also have the Poolhacker fountain light, they will automatically synchronize their lighting effects in color mode. For more details, please visit our website www.poolhacker.com.



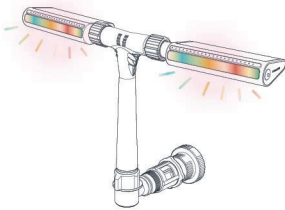
Metal Frame Pool Solar Light



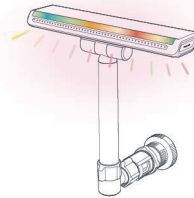
Steel Wall Pool Solar Light



Inground Pool Solar Light



DualArc Solar Pool Fountain



LumenX Burst Solar Pool Fountain

How to Obtain After-Sales Service

SCAN THE QR CODE TO ACTIVATE YOUR WARRANTY



If you have any further questions during usage or require replacement parts, please contact our after-sales service at info@poolhacker.com, and we will promptly assist you.

Technical Specifications

Name	Poolside Solar Light
Model	YC040/YC044/YC046
Light Power	Maximum 2.3W
Battery Capacity	6400mAh
Solar Input	DC 5V = 0.7A (MAX)
FCC ID: 2BFIN-YCBGD	

Warning

- ① Do not submerge the solar panel in water to avoid damaging the circuitry.
- ② Do not disassemble or repair the device yourself, as there is a risk of electric shock.
- ③ Stop using the device immediately if the outer casing is damaged.
- ④ When cleaning the product's surface, use a soft cloth; do not use corrosive solvents.
- ⑤ Children under 7 years old should not use this product alone.
- ⑥ Strong light warning: Do not stare directly at the light source.
- ⑦ If the product malfunctions or moisture appears inside the light cover, stop using it and contact Poolhacker professionals.
- ⑧ The remote is not waterproof.

Troubleshooting

Light does not turn on during first use: Due to long shipping times, the battery may have drained. Please place the product in direct sunlight outdoors to recharge and activate the battery.

Remote doesn't working: Check if the battery insulation tab has been removed from the remote. Avoid submerging the area above the indicator light in the pool, and use within a 98 ft range.

Solar panel not charging: Clean the contact points between the solar panel and the light body. Ensure the connection clips are securely fastened. Place the device in a clear, sunlit area while turned on, and the white indicator light should stay on while charging.