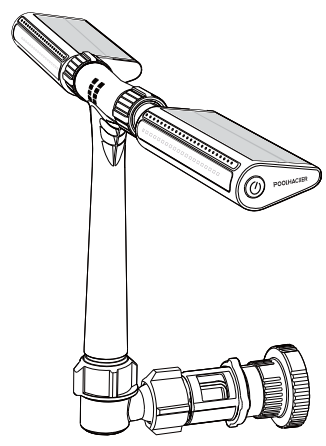
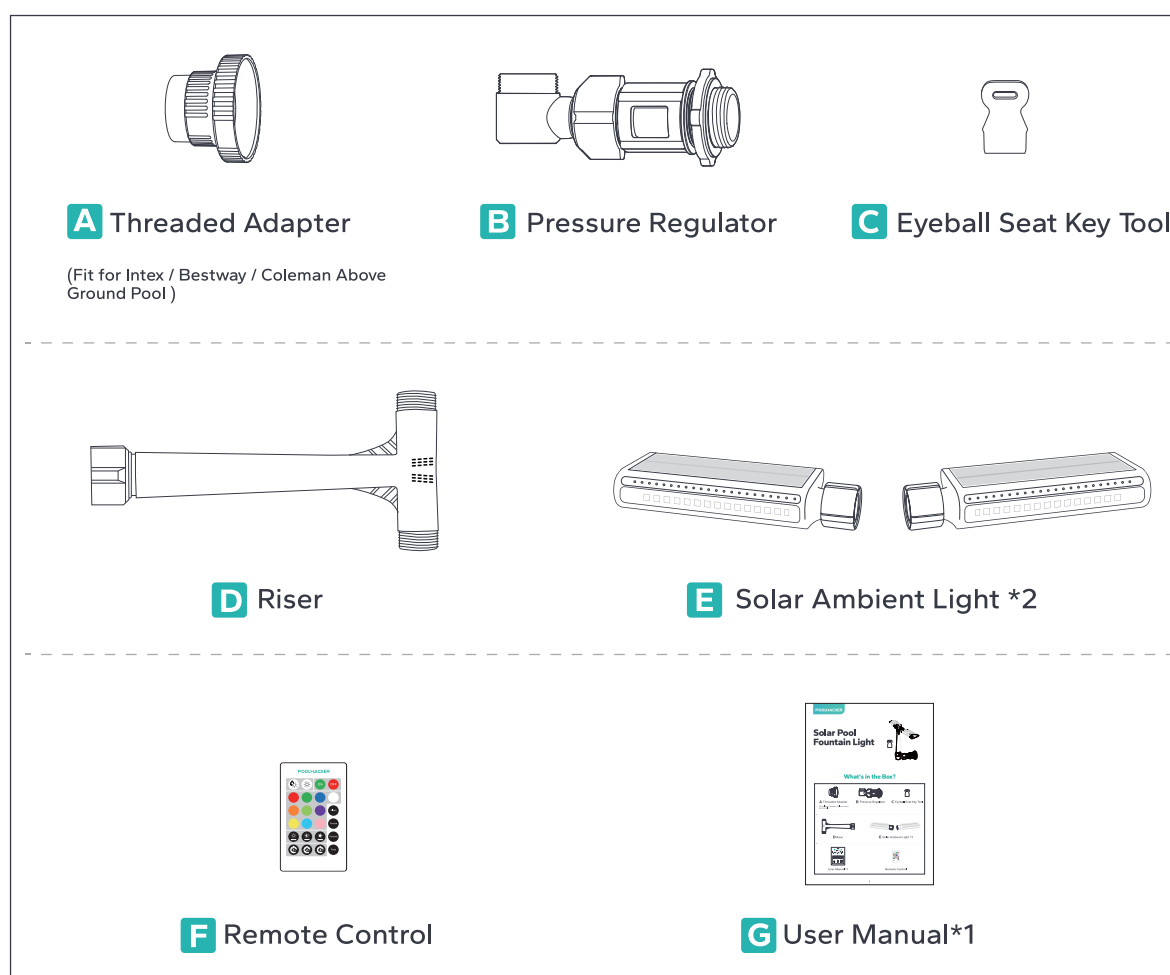


Solar Pool Fountain Light



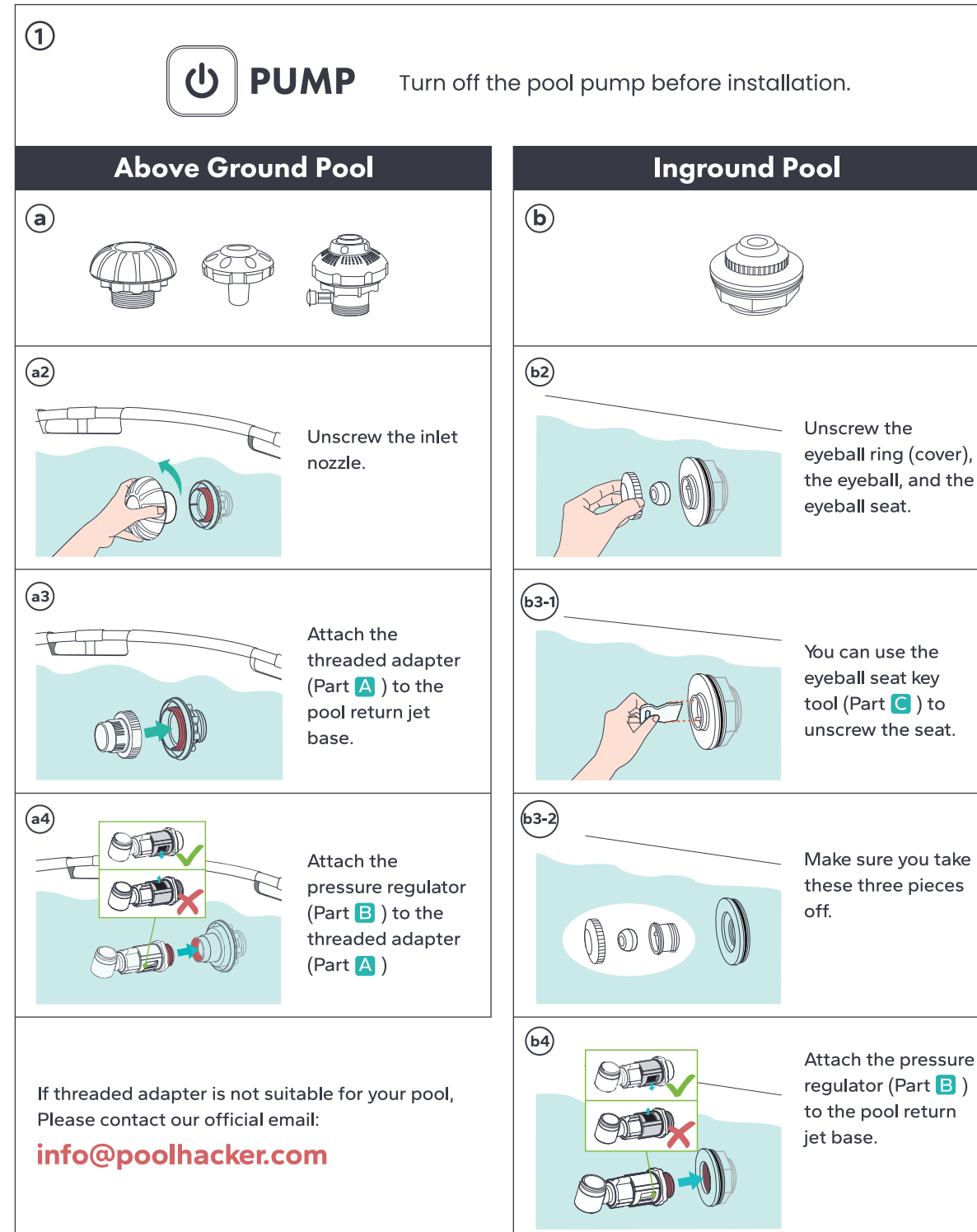
What's in the Box?



1

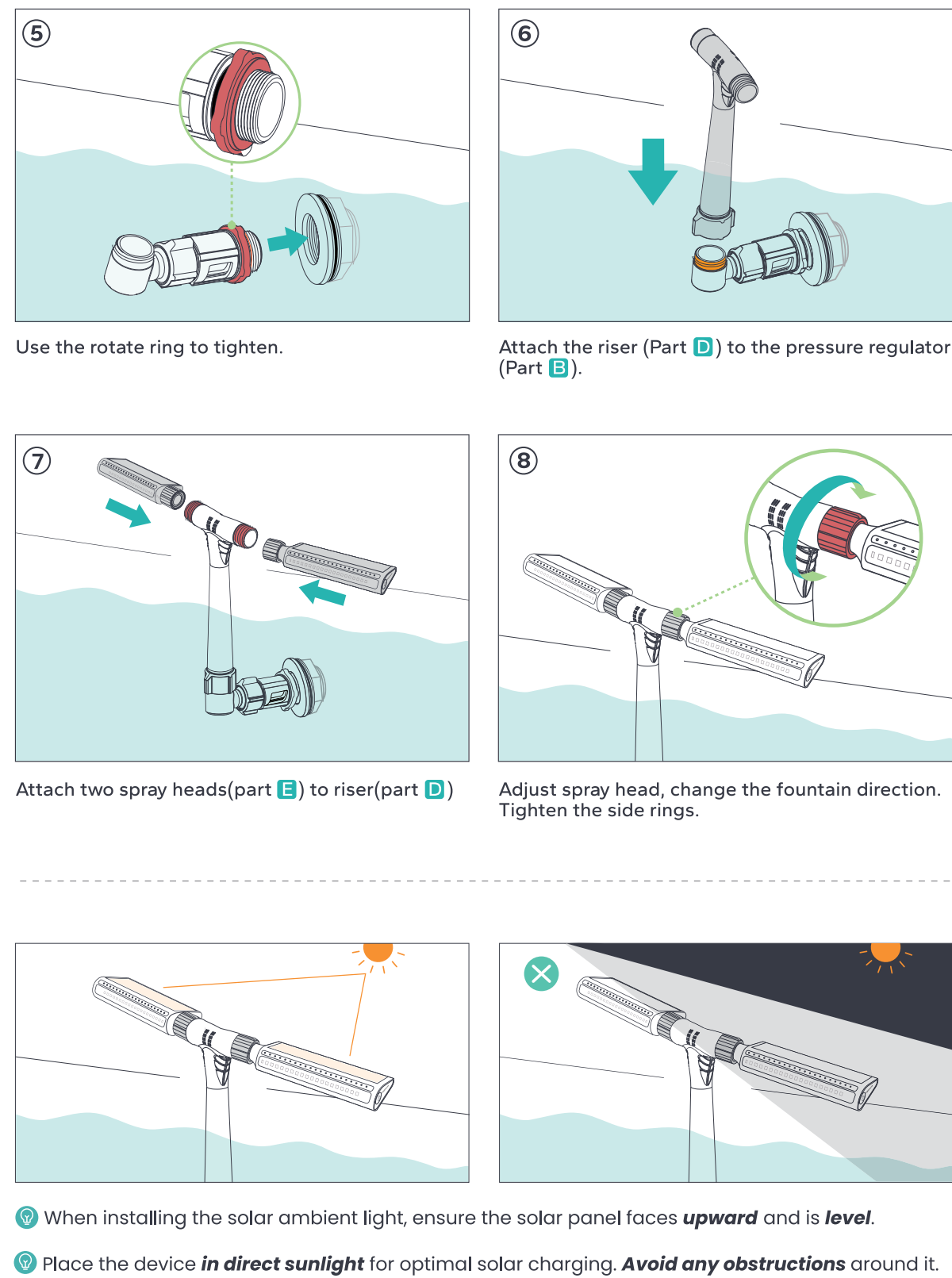
Operating Instruction

Selecting the Appropriate Return Jet



2

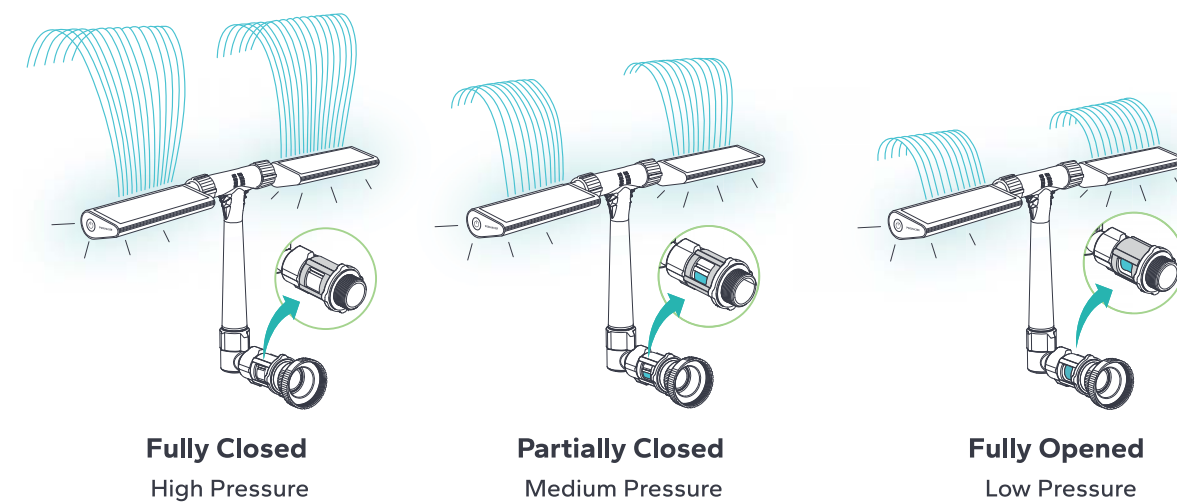
Installing the Riser and Spray Heads



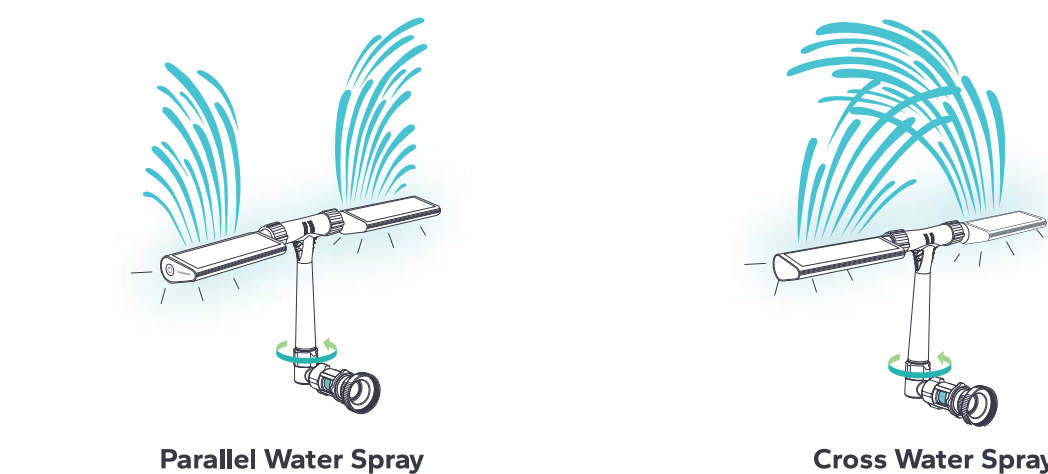
3

Adjust the Water Pressure by Turning the Pressure Regulator

The smaller the opening, the higher the waterfall.



Control the Water Show by Adjusting the Direction of the Riser

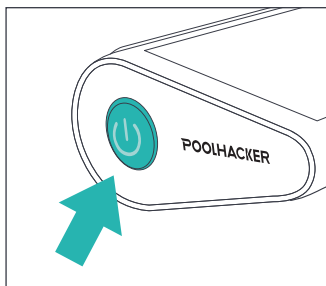


After rotating the riser and adjusting the spray angle, repeat steps 7-8 to swap the left and right fountains, ensuring the solar panel faces upward.

4

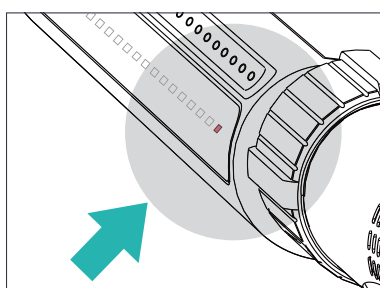
Panel Button Operation

- Press and hold the 'ON' button for 3 seconds to turn on the light.
- Press the 'ON' button again to cycle through the following lighting modes: White, Red, Green, Blue, Orange, Yellow, Light Green, Cyan, Purple, Pink, Flash, Strobe, Smooth, Fade...
- To turn off, press and hold the 'ON' button for 1 second.



Indicator Light Meaning

- White: Solar Charging in Progress
- Flashing Red: Low Battery Warning
- Blue: Water&Light Sense Mode
- Green: Light Sense Mode



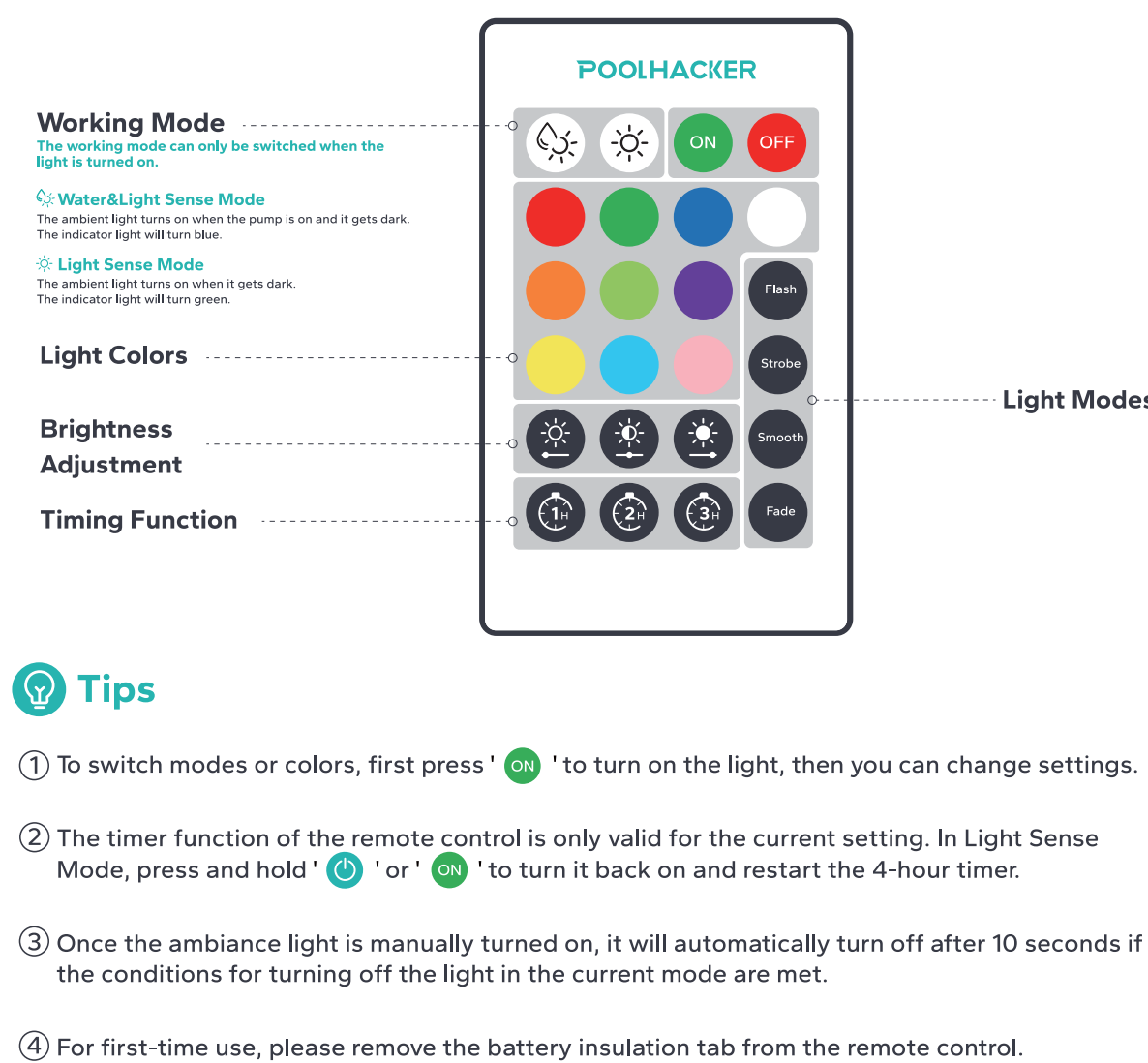
- The default setting for first-time use is Water&Light Sense Mode.
- In Light Sense Mode, the ambient light will automatically turn off after 4 hours by default to prevent attracting mosquitoes in case you forget to turn it off.
- In Water&Light Sense Mode, the ambient light turns on when it gets dark and the pump is on, and turns off only when the pump is off or it gets light.(It will not default to a 4-hour automatic shutdown.)

Technical Specifications

Name	Solar Pool Fountain Light
Model	YC042
Solar Input	DC 5V = 0.3 A
Light Power	0.7W
Battery Capacity	6400mAh
FCC ID: 2BFINYC042	

5

Remote Control Functions



Warning

This device complies with Part 15 of the FCC Rules. Operation is subject to the following two conditions:
(1) This device may not cause harmful interference, and
(2) This device must accept any interference received, including interference that may cause undesired operation.

Changes or modifications not expressly approved by the party responsible for compliance could void the user's authority to operate the equipment.

NOTE: This equipment has been tested and found to comply with the limits for a Class B digital device, pursuant to Part 15 of the FCC Rules. These limits are designed to provide reasonable protection against harmful interference in a residential installation. This equipment generates uses and can radiate radio frequency energy and, if not installed and used in accordance with the instructions, may cause harmful interference to radio communications. However, there is no guarantee that interference will not occur in a particular installation. If this equipment does cause harmful interference to radio or television reception, which can be determined by turning the equipment off and on, the user is encouraged to try to correct the interference by one or more of the following measures:

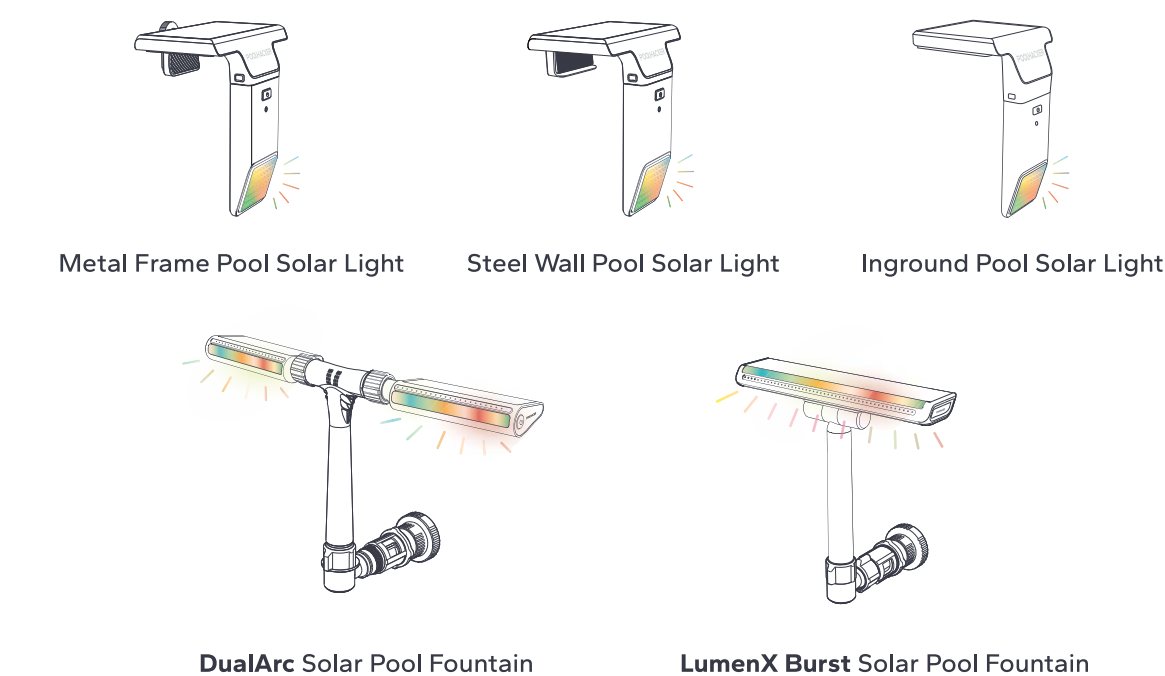
- Reorient or relocate the receiving antenna.
- Increase the separation between the equipment and receiver.
- Connect the equipment into an outlet on a circuit different from that to which the receiver is connected.
- Consult the dealer or an experienced radio/TV technician for help.

RF Exposure Statement
To maintain compliance with FCC RF Exposure guidelines, this equipment should be installed and operated with minimum distance of 20cm the radiator your body. This device and its antenna(s) must not be co-located or operation in conjunction with any other antenna or transmitter.

6

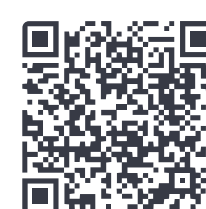
Poolhacker Sync

- The remote control is universal for all Poolhacker light series products and syncs the lighting effects when used.
- When syncing is not needed, short press 'ON' to switch colors or effects.



How to Obtain After-Sales Service

SCAN THE QR CODE TO ACTIVATE YOUR WARRANTY



If you have any further questions during usage or require replacement parts, please contact our after-sales service at info@poolhacker.com, and we will promptly assist you.

7

Troubleshooting

Problem	Possible reason	What to Do
Light does not turn on during first use.	Due to long shipping times, the battery may be drained.	Please place the product in direct sunlight outdoors to recharge and activate the battery.
Remote not working	The battery insulation tab has not been removed.	Check if the battery insulation tab has been removed from the remote.
	The device's signal receiver is submerged in water.	Keep the device above the water surface.
	Exceeds usage range.	Please use within 98 feet.
Solar panel not charging	Solar panel is dirty.	Clean the dirt off the solar panel.
	There are obstructions and insufficient sunlight.	Place the device in a sunny location and ensure there are no obstructions around it.
Lights not synchronized	Incorrect installation.	Ensure the solar panel is always facing upward and level. The white indicator light should stay on during charging.
	Using the body buttons.	Use the body buttons to manually select the same color.
Lights do not turn on when it gets dark	Using the remote control.	The remote can synchronize both lights. The lights will only sync automatically when the color mode is selected.
	Other lights around causing interference.	Turn off bright lights above the device. It will only turn on in dim light.
	Water pump not turned on.	In water flow & light mode (blue indicator), the light turns on only when the pump is on and it's dark.

Warning

- Do not submerge the device in water to avoid damaging the circuitry.
- Do not disassemble or repair the device yourself, as there is a risk of electric shock.
- Stop using the device immediately if the outer casing is damaged.
- When cleaning the product's surface, use a soft cloth; do not use corrosive solvents.
- Children under 7 years old should not use this product alone.
- Strong light warning: Do not stare directly at the light source.
- If the product malfunctions or moisture appears inside the light cover, stop using it and contact Poolhacker professionals.
- The remote is not waterproof.

8