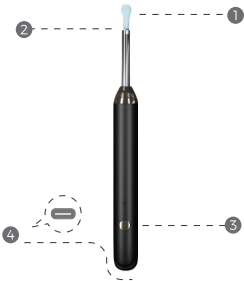


Intelligent visual ear scoop

01



PRODUCT COMPONENTS

- 1.The silicone Ear spoons (4)
2. The camera
3. The power button
4. The charging port

INDICATION LIGHT INTRODUCTION

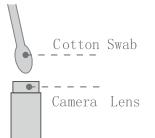
02



1. Charging indication
The red light flashes when charging, and will stay on for a long time after charging
2. WIFI indicator
When the WIFI is not connected, the blue light will flash. When the WIFI is successfully connected, the blue light will flash for a long time
3. When the product has no power, it will automatically shut down and the red light will flash

GAMERA LENS CLEANING

During ear harvesting, ear debris may stick to the surface of the camera lens and interfere with viewing. Use alcohol with a cotton swab to remove ear debris.



HOW TO USE?



Step 1:

There are two ways to download an APP.

- ① Search for "SL ylz "in the APP Store or Google Play.

Step 2:

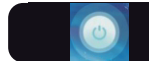
Two seconds after pressing the button to turn on the otoscope, the WIFI indicator will flash.

- ① Open the "SL ylz" APP and click the "Connection icon"

03

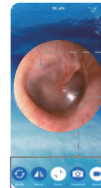


- ② Open WIFI on the mobile phone, find "ShengLong-XXX" and connect



- ③ Successful WIFI connection returns to the APP interface

APP INTERFACE DESCRIPTION



- ① Dynamic lens/horizontal lens: visual ear pickup is used together with 6-axis gyroscope
- ② Function area: Rotate/Mirror/Scale/Snapshot/Record:



WIFI only supports point-to-point connection, not simultaneous connection of multiple devices

04

QUESTIONS	SOLUTIONS
The APP crash	Please uninstall the APP and scan the QR code to reinstall it
The connection fails	Check whether the earplug is connected to another device. If yes, please cancel the WIFI connection of this device, close and open the earplug connection to use your new device again.
WIFI connection crashes	1. Close the otoscope and open it again 2. Please close the APP and open it again 3. Reconnect to the WIFI
The otoscope does not respond and the lens light is not bright	Please charge the device

No real-time image is displayed after the APP is started	<p>1. Please make sure your mobile phone is connected to "ShengLong-XXXX".</p> <p>2. Select Connect when prompted. The WLAN cannot access the Internet. If you select "Cancel" for the first time, you need to forget the "ShengLong-XXXX" WIFI network, then CONNECT again with this WIFI, continue to open the APP, and then select "CONNECT "to make it work properly.</p> <p>3. Please enter your device "Settings" and check to ensure that "SL ylz "application is allowed to access" WLAN "or" WLAN " & Cellular Data"</p> <p>4. Close the APP and open it again.</p> <p>5. Please try to turn on the phone data and then turn it off.</p>
Unable to save pictures or videos to the phone	Be sure to allow the APP to access photos, media, and files on your device

PRODUCT PARAMETERS

Product Name	Ear Otoscope Model	Charging Time	1 h
Model		Input Parameter	5V=0.4A
Network Standard	IEEE 802.11b/g/n	Working Voltage	3.7 V
Working Frequency	2.4Ghz	Rate Power	0.75W
Image Transmission Rate	30fps	Lens Diameter	3.5mm
Image Sensor	CMOS	Best Focal Length	1.5-2cm
Environment Temperature	10-50 Degree	Pixel	5MP
Battery Capacity	200mAh	Gravity Sensor	6-Axis
Battery Life	About 90 minutes	Compatible system	Android 4. 4d ios9.0 or later



WARNING

1. Hand discomfort and eye inconsistency may occur when using this product for the first time. Improper operation may cause ear pain. Please wait for a moment and rest before operating.
2. If there is earwax impaction in the ear canal when using this product, be careful when digging the ear. It is recommended to go to the hospital for professional treatment.
3. Patients with ear canal inflammation can view the product through this visual function, but avoid using the ear harvesting function of the product to avoid injury.
4. Those without full civil capacity or lack of relevant experience and knowledge (including children) must use, clean and maintain the product under the supervision and guidance of the guardian as follows.
5. This product is equipped with built-in rechargeable battery. Do not put it into fire, charge, use or place it in high temperature.
6. Do not use this product when taking a bath.

This equipment has been tested and found to comply with the limits for a Class B digital device, pursuant to part 15 of the FCC Rules. These limits are designed to provide reasonable protection against harmful interference in a residential installation. This equipment generates, uses and can radiate radio frequency energy and, if not installed and used in accordance with the instructions, may cause harmful interference to radio communications. However, there is no guarantee that interference will not occur in a particular installation. If this equipment does cause harmful interference to radio or television reception, which can be determined by turning the equipment off and on, the user is encouraged to try to correct the interference by one or more of the following measures:

- Reorient or relocate the receiving antenna.
- Increase the separation between the equipment and receiver.
- Connect the equipment into an outlet on a circuit different from that to which the receiver is connected.
- Consult the dealer or an experienced radio/TV technician for help.

Caution: Any changes or modifications to this device not explicitly approved by manufacturer could void your authority to operate this equipment.

This device complies with part 15 of the FCC Rules. Operation is subject to the following two conditions: (1) This device may not cause harmful interference, and (2) this device must accept any interference received, including interference that may cause undesired operation.

The device has been evaluated to meet general RF exposure requirement.