

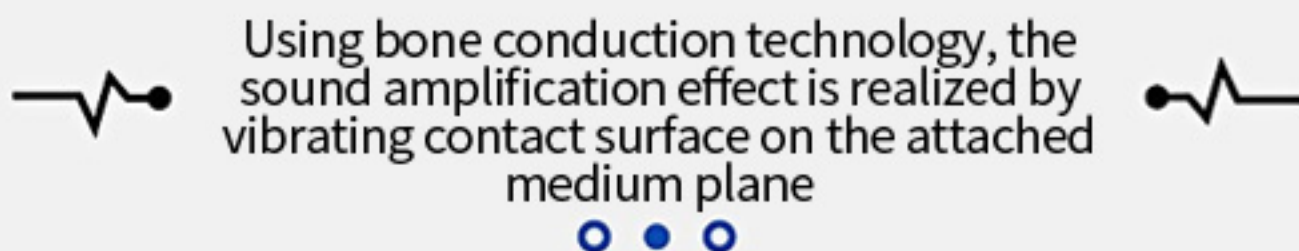
Strong Bass

Small size and large capacity

Electroplating Bluetooth speaker small steel gun



A speaker without a speaker



Bone conduction
black technology

TWS

Real stereo



Bluetooth 5.0



Aircraft grade aluminium



Long endurance

FM

Built-in FM



HD call



HD sound quality



Very lightweight

DSP HIGH DEFINITION NOISE REDUCTION TECHNOLOGY

BUILT-IN NOISE REDUCTION MICROPHONE, SOUND QUALITY CLEAR
ONE-BUTTON ANSWER, SO THAT CALLS ZERO DISTANCE



BLUETOOTH 5.0 INSTANT CONNECT DEVICE

C5 BLUETOOTH SPEAKER COMPATIBLE WITH A VARIETY OF MOBILE PHONES
TABLETS AND NOTEBOOKS AND OTHER DEVICES ABOUT 10 METERS AWAY CAN BE
BLUETOOTH CONNECTION STABILITY LET MUSIC PLAY MORE FREELY



LAPTOPS



TABLETS



CELL PHONES

ELECTROPLATING PROCESS BEAUTIFUL FOR YOU

ELEGANT AND SPECIAL PLATING PROCESS

THE BODY AS A MIRROR REFLECTS THE DAZZLING LIGHT AS A WHOLE SMOOTH

BASE WITH SILICONE SUCKER MATERIAL, FEEL COMFORTABLE



TWS TRUE DUAL CHANNEL

EASY TO FORM A MUSIC PHALANX
AND A MOBILE PHONE CONTROL THROUGHOUT THE USE
OF STRONG STEREO THROUGHOUT THE SPACE
THE REALIZATION OF REAL STEREO SOUND

SUPPORT 2 BLUETOOTH SPEAKERS IN SERIES SYNCHRONOUS PLAY



HANDS-FREE, CLEAR AND FREE

C 5 BLUETOOTH SPEAKER BUILT-IN HIGH-DEFINITION MICROPHONE
CALLS TO THE HANDS-FREE MODE TO FREE HANDS
EASY TO DO WHILE WORKING WHILE TALKING



LONGER RANGE, MORE PLEASURE

BUILT-IN HIGH-CAPACITY BATTERY

A CHARGE CAN LISTEN TO ABOUT 8 HOURS

SUPPORT SIDE CHARGE WHILE PLAYING GOOD MUSIC NEVER STOP

LET YOU HIGH ENOUGH AT A TIME



THE ABOVE DATA IS THE RESULT OF ROUTINE TEST, THE SPECIFIC USE OF DIFFERENT
PLAYBACK VOLUME AND USE OF DIFFERENT CIRCUMSTANCES

BOTTOM SUCKER DESIGN

NOT ONLY STRONG, WE PAY MORE ATTENTION TO THE
QUALITY OF LOAD-BEARING WALL, STRONG SUCTION
SUITABLE FOR A VARIETY OF SMOOTH SURFACE





TypeC High speed interface

MORE DEVICES CAN BE SUPPORTED WITHOUT
BLUETOOTH

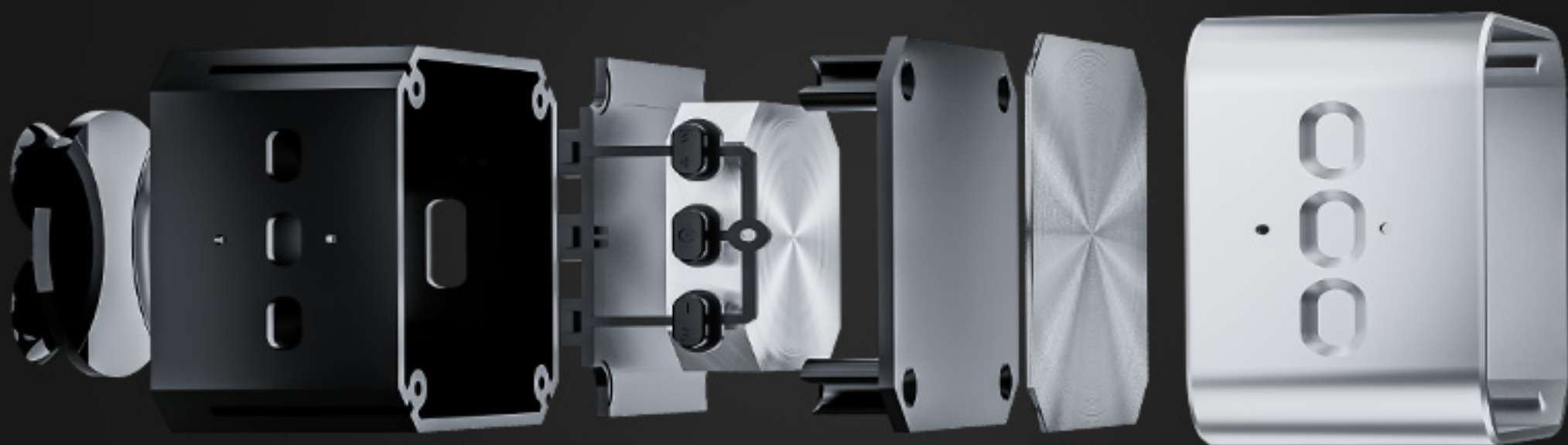
A SMALL, RELIEVED FIGURE

ONLY PALM SIZE, ONE HAND CAN BE HELD
LIGHT AND COMPACT



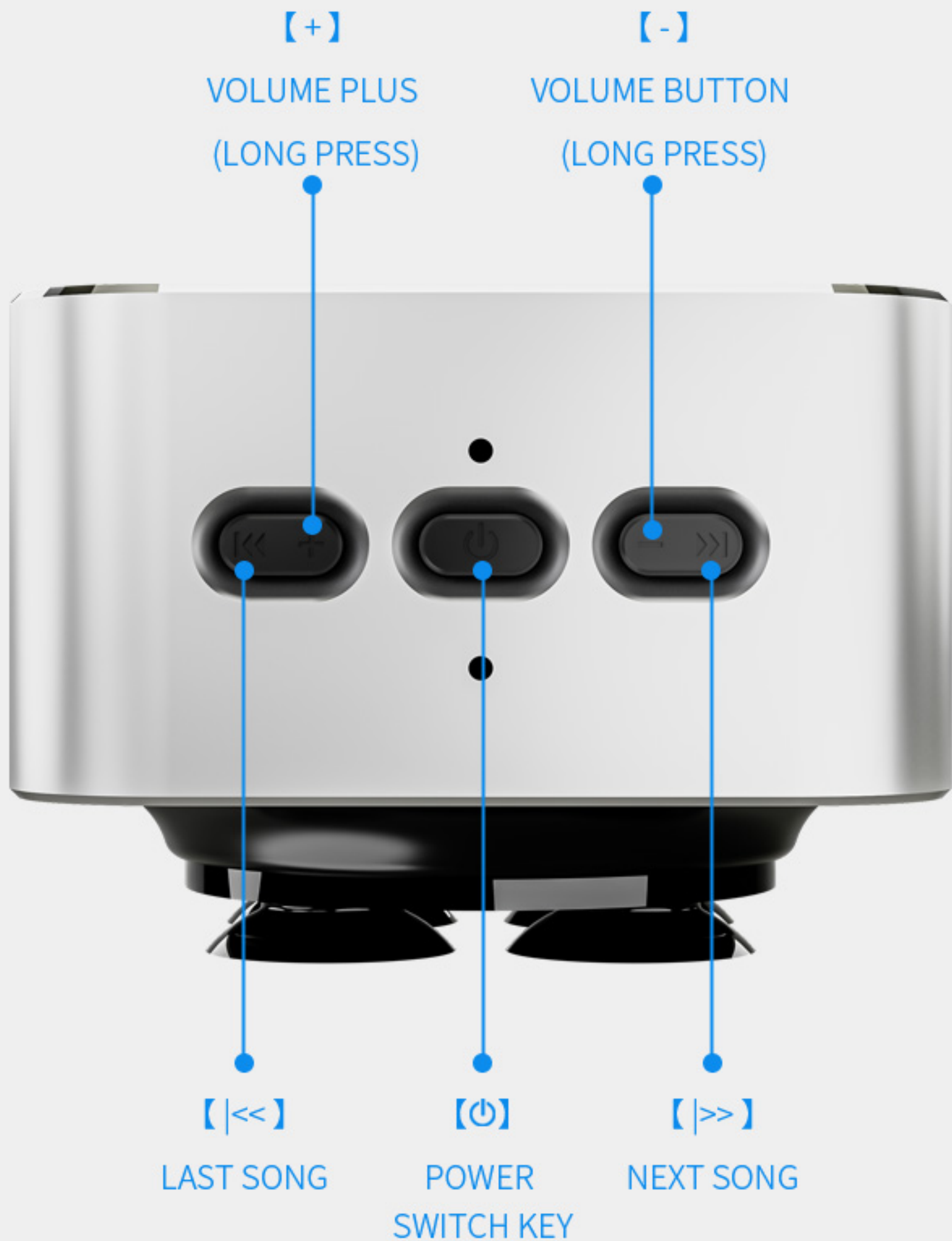
QUALITY IS BOTH INTERNAL AND EXTERNAL

HIGH DENSITY CLOSED FULL-FREQUENCY INTERNAL
MAGNETIC HORN UNIT + HEAVY BASS
VIBRATION FILM TUNING MASTER DEDICATED



HOW TO USE THE FUNCTION BUTTON

EASY TO USE IS GOOD DESIGN



- Power button

Chang'an, you can do this or turn your phone off

- Last song

Short click to switch to the previous track

- Volume up

Press this button long to reduce the volume

- Next song

Short click to switch to the previous track

- Volume reduced

Press this button long to reduce the volume

SCENE PRESENTATION







This device complies with part 15 of the FCC Rules. Operation is subject to the following two conditions: (1) this device may not cause harmful interference, and (2) this device must accept any interference received, including interference that may cause undesired operation.

Any changes or modifications not expressly approved by the party responsible for compliance could void the user's authority to operate the equipment.

NOTE: This equipment has been tested and found to comply with the limits for a Class B digital device, pursuant to Part 15 of the FCC Rules. These limits are designed to provide reasonable protection against harmful interference in a residential installation. This equipment generates, uses and can radiate radio frequency energy and, if not installed and used in accordance with the instructions, may cause harmful interference to radio communications. However, there is no guarantee that interference will not occur in a particular installation.

If this equipment does cause harmful interference to radio or television reception, which can be determined by turning the equipment off and on, the user is encouraged to try to correct the interference by one or more of the following measures:

- Reorient or relocate the receiving antenna.
- Increase the separation between the equipment and receiver.
- Connect the equipment into an outlet on a circuit different from that to which the receiver is connected.
- Consult the dealer or an experienced radio/TV technician for help.

The device has been evaluated to meet general RF exposure requirement. The device can be used in portable exposure condition without restriction