



Professional Technical support Email:

**Cinandrow-service@outlook.com**

**Car Video Player W1**

**User Manual**

## Information for Users

Please read carefully before use and observe the matters listed therein to ensure safe and trouble-free long-term use of this product.

- Do not place the product in a humid working environment, the product is not waterproof, please avoid getting the product wet or exposed to rain.
- Do not use harsh chemicals, cleaning solvents or detergents to clean this product.
- Do not point the camera directly at the sun and other super light sources to avoid damage to the optics.
- Do not use it in a dusty environment, so that the lens and other parts will not be contaminated with dust, which may affect the video effect.
- The TF memory card is not allowed to be unplugged with electricity, so as not to damage the data.
- Please use genuine brand C10 U3 grade or above TF memory card.

## Notice

As the specifications may be changed due to the technical upgrades, Cinandrow reserves the right to change, modify, add or remove portions of these terms at any time without prior notice. Please note that this product is for personal use only and may not be used in violation of national or international copyright/privacy laws. The recorded images are for personal use only and may not be distributed to the public. The use of this product to record images of performances, exhibitions or commercial activities may infringe the legal rights of the others.

## Warning

Disassembling the device may void the warranty. Please read the instructions carefully before installing or ask for professional help. Do not change any settings while driving only after the vehicle is parked.

## Installation Notice

This product should be installed onto the windshield in order to obtain the best view of the front traffic. However, some states prohibit drivers from mounting devices on the windshield or on certain area of the windshield. It is owner's responsibility to mount and use this device in compliance with local laws.

## herald

- For the safety of your life and the lives of others, please do not watch videos or operate in-car video players while driving your vehicle. State regulations prohibit watching videos and operating in-car video players while driving a vehicle.
- Some of the features of this product can only be used as an aid when you are driving your vehicle, and it does not mean that you can be distracted, careless or even lose your judgment when you are driving your vehicle. We do not assume any legal responsibility for any safety accidents caused by this product.
- The pictures and contents of this brochure are for reference only, and we are not responsible for any misunderstanding.
- Electronic products updated and upgraded quickly, such as hardware and software upgrades, the operating interface has changed without notice, to the actual machine operation shall prevail.

## A. Installation guide

1. Turn off the car engine.
2. Insert the TF card correctly into the card slot of the recorder.  
**Please use a genuine high-speed TF card (Class10 U3 and above) with a capacity of not less than 8GB and a maximum support of 128G.**
3. Fix the recorder to the original rearview mirror of the car.
4. Connect the vehicle power cord to the cigarette lighter port.
5. Connect the power cable to the Type-C port of the recorder.  
**[Attention] When wiring, you can lay the car power cable along the edge of the windshield of the car.**
6. Install the rear camera near the rear license plate of the vehicle, pay attention to the direction when installing. The wiring can be laid along the roof of the vehicle, and the rear plug will be connected to the AV-IN of the recorder after the installation is completed.
7. Adjust the lens position to ensure that the lens is level with the ground.
8. Start the engine and check that the machine has been installed correctly.  
**【Note】 When the machine is installed correctly, the machine starts to enter the recording state when it is turned on, and the video indicator light blinks.**

## B. WIFI interconnection



WIFI interconnection method:

Scan the QR code above to download APP. or enter Setting, WIFI interface on the machine and scan the code to download Mobile Connected APP.

Turn on the WIFI switch on your cell phone, find the machine WIFI name: CVR-XXX, enter the password 12345678, you can enter the Wind Recorder APP on your cell phone to carry out interconnection operation.

**Note:** When connecting the device WIFI, the cell phone pop-up box prompts whether to use the WIFI network, point to confirm the choice, before you can carry out the interconnection operation.

## C. Key Function Description

Power button/screen backlight on/off button




Long press: In the off state, long press [Power button] can turn on the power of the machine, the machine automatically start working. Long press [Power button] for 3 seconds under power-on state to automatically save the video file and user settings and shut down the machine.

Short press: Short press [Power button] to turn off the screen display under power-on condition, and short press [Power button] again to turn on the screen display.

## D.Preview Interface Introduction





### 1. Add lock (EMR emergency):

In the video recording, click the lock icon " " to lock the current video and add 20s to the current recording time as the locked file, the lock icon is " ", click " " to unlock the current file.

### 2. Audio switch:

Click to turn the recording function on or off. (Settings are automatically saved and there is no need to reset the function after powering on the computer again.)

### 3. Video:

The default icon is " " for recording status, and the default icon is " " for non-recording status, clicking will change the recording status.

### 4. Recorded center shot:

Click to realize the photo function.

5. Playback icon:

Click on it to enter the playback screen.

6. Setting up the interface:

Click it to enter the system setting interface.

7. Video icon:

The red dot blinks to indicate normal recording, the non-recording state will be hidden, and the locked state will turn yellow.

8. Video time:

Loop recording shows the recording time, the default is 1 minute, you can change the time by selecting loop recording in the setting interface, and the non-recording status will be hidden.

9. Brightness adjustment-:

By sliding the brightness bar left and right you are able to change the brightness, sliding left reduces the brightness.

Note: The brightness of this operation is saved with the power off.

10. Brightness adjustment +:

By sliding the brightness bar left and right you are able to change the brightness, sliding to the right increases the brightness.

11. Status bar, time and date display:

WIFI status, card reading, GPS, audio and other status display, time and date display.

12. WIFI icon:

Click to turn on WIFI, the status bar will show white wifi icon, you can turn it on and off in the setting interface, if you connect to the mobile app, the WIFI icon will turn green.

13. GPS speed:

When the GPS receives the signal positioning success, the GPS icon is green, it will display the GPS speed and so on (speed is only for reference, the actual dashboard shall prevail), note the difference between the unit km/h and mph.

## E. Main interface screen operation

1. Click to operate:

Enter each screen or function as shown in the introduction above.

2. Slide up and down:

Change the current camera video screen display position by dragging up and down.

**Note: The operation will be switched off and saved after dragging up and down.**

### 3. Swipe left or right:

By swiping left and right, change the current video display source, after swiping right to change the order to front view - back view - split screen display (left for front view and right for back view) - front view - and so on. If it's a left/right swipe for the brightness bar section, swiping to the right increases the brightness and swiping to the left decreases it.

**Note: The left and right swipe operation will turn off the power to save the screen display under the current screen.**

## F. Playback interface

Click "Playback icon" in the main interface of preview to enter the playback interface, and by default, you will enter the interface of the video file under the front camera.



Looped video shot by the front camera.



Looped video shot by the rear camera.



Click on the video saved after locking.



Click to view the pictures taken by the one-touch photo function.



Click the Delete button to delete.

## G. Setup

**WIFI:** You can turn on and off WIFI, and scan the QR code to download the interconnection APP.

**Resolution:** 1080P, 2K, 4K optional (different models, options will be different, specific to the physical shall prevail)

**Recording time:** 1 minute, 3 minutes, 5 minutes, video video loop time can be selected.

**Recording:** You can choose to turn recording off or on.

**Pull Mirror Back:** off (default), on for original image.

**Screen saver:** The screen saver can be set to: Off (default)/1 minute/2 minutes/3 minutes, the screen will turn off automatically after the time of the saver is selected.

**Preview Mode:** Pre-record, post-record, split-screen optional, when selected, the shutdown will be saved.

**Volume:** selectable off, low, medium, high.

**Touch sound Effect:** off, on (feedback sound for screen taps).

**Gravity Sensing:** selectable Off, Low, Medium (default), High. The machine detects the vibration and will automatically lock the video. **Note: The locked video will not be deleted automatically and cyclically, please delete the locked video manually or format the TF card regularly.**

**Reverse Line Calibration:** Adjust the proper reverse line.

**Language:** SimplifiedChinese/TraditionalChinese/English/Russian/Spanish/French/German/Japanese/Korean.

**Time Settings:** year/month/day/hour/minute, 12H/24H can be set.

**Time Zone:** UTC time zone adjustment is selectable.

**GPS:** The machine is inserted into the GPS antenna, after successful positioning. Display GPS signal strength, latitude, longitude, speed, etc. GPS antenna please install and stick in the corner of the center console, VHB adhesive downward, GPS facing up.

**Format :** This option will format all the stored data of the TF card, it is recommended to manually format the TF card when it is first inserted to ensure sufficient card capacity. **(Note: Users are recommended to format the TF card periodically to ensure data security.)**

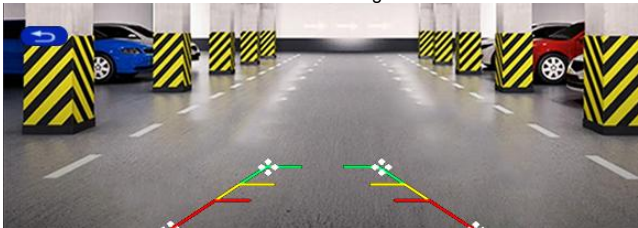
**Restore Factory Settings:** Restore to the system default settings.

**Firmware Version:** Displays the current firmware version.




## H. Reverse line calibration

Click Reverse Line Calibration to enter settings:



Park the vehicle in the middle of the parking space and manually drag



[  ], adjusting the position so that the lateral coaxial line and parking line are level with the ground. After adjusting the above lines, click [Return] to confirm.

## I. Car HD rear view



1. Car Video Player (4K recorder)
- 2、 Reverse power cable (connected to the positive pole of the reverse light)
- 3、 rear view head (Recommended to install near the license plate)

## Notice

- Please insert the rear view plug into the machine correctly before powering on the machine.
- Do not plug and unplug the rear view head with electricity, or you will lose the signal and even damage the rear view.
- Do not touch the lens with your fingers and clean the lens surface regularly.

- Please mount the rear view head near the rear license plate.
- Reverse Rear View screen is only an auxiliary reference, please refer to the actual environment safety.

## **Disclaimer**

The audio and videos recorded by the dashcam are for reference only.

The following situations may damage or lose recorded footages:

1. Pulling out the SD card while recording may cause the last recorded file to be lost.
2. The last image or video may be damaged or lost, if the dashcam suddenly lost power.
3. If the vehicle experience a major collision, the dashcam may be damaged; thus the files and data may also be damaged or lost.
4. Major collision during recording may cause the memory card to loosen or disconnect which may lead to data loss. Cinandrow is not liable for any type of loss resulting from the use of this device.
5. You should not set/install this dash cam at a place that would obstruct or reduce a driver's view; make sure your usage complies with pertinent vehicle codes of your state, province, territory or country.

## **FCC Warning**

This device complies with Part 15 of the FCC Rules. Operation is subject to the following two conditions:

(1) This device may not cause harmful interference, and (2) this device must accept any interference received, including interference that may cause undesired operation.

NOTE 1: This equipment has been tested and found to comply with the limits for a Class B digital device, pursuant to part 15 of the FCC Rules. These limits are designed to provide reasonable protection against harmful interference in a residential installation. This equipment generates, uses and can radiate radio frequency energy and, if not installed and used in accordance with the instructions, may cause harmful interference to radio communications. However, there is no guarantee that interference will not occur in a particular installation. If this equipment does cause harmful interference to radio or television reception, which can be determined by turning the equipment off and on, the user is encouraged to try to correct the interference by one or more of the following measures:

- Reorient or relocate the receiving antenna.
- Increase the separation between the equipment and receiver.
- Connect the equipment into an outlet on a circuit different from that to which the receiver is connected.
- Consult the dealer or an experienced radio/TV technician for help.

NOTE2: Any changes or modifications to this unit not expressiveness by the party responsible for compliance could void the user's authority to operate the equipment.

### **RF Exposure Statement**

To maintain compliance with FCC'S RF Exposure guidelines, This equipment should be installed and operated with minimum distance of 20cm between the radiator and your body. This device and its antenna(s) must not be co-located or operation conjunction with any other antenna or transmitter.