



Car Video Player A1 User Manual

Notice

As the specifications may be changed due to the technical upgrades, Cinandrow reserves the right to change, modify, add or remove portions of these terms at any time without prior notice. Please note that this product is for personal use only and may not be used in violation of national or international copyright/privacy laws.

Warning

Disassembling the device may void the warranty. Please read the instructions carefully before installing or ask for professional help. Do not change any settings while driving only after the vehicle is parked.

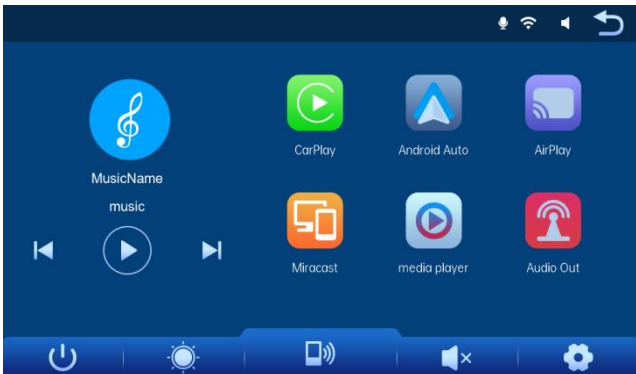
Installation Notice

This product should be mounted in a suitable location on the windshield or center dash for optimal product use. however, some states prohibit drivers from mounting devices on the windshield or on certain area of the windshield. It is the owner's responsibility to mount and use this device in compliance with local laws.

Disclaimer

- For the safety of your life and the lives of others, please do not watch videos or operate in-car video players while driving your vehicle. State regulations prohibit watching videos and operating in-car video players while driving a vehicle.
- Some of the features of this product can only be used as an aid when you are driving your vehicle, and it does not mean that you can be distracted, careless or even lose your judgment when you are driving your vehicle. We do not assume any legal responsibility for any safety accidents caused by this product.
- The pictures and contents of this brochure are for reference only, and we are not responsible for any misunderstanding.
- Electronic products updated and upgraded quickly, such as hardware and software upgrades, the operating interface has changed without notice, to the actual machine operation shall prevail.

1.Functions



1.Off the screen



2.brightness button



3.Mobile connectivity



4.Volume Adjustment



5.setting interface



6.Music Player



7.Carplay



8.Android Auto



9.AirPlay



10.Miracast



11.Media Player



12.Audio out

A.CarPlay vs Airplay.

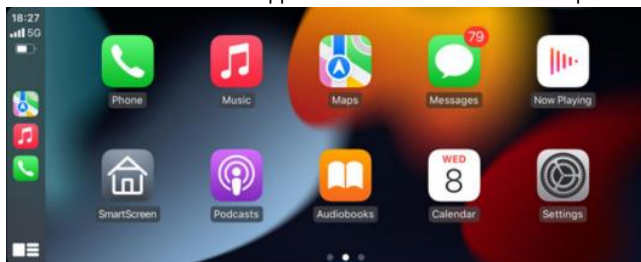


CarPlay

Turn on your iPhone's Wi-Fi , and tap the CarPlay button to enter CarPlay connection. Tap Manage in the interface to pair and connect with your phone's to enter the CarPlay CarPlay interface. After powering on, the machine will automatically connect to the last connected cell phone.



Click on this icon in the upper left corner for connection help.



Airplay

For iPhone dedicated mirror casting, click Airplay button to enter the interface, click the upper left corner of the interface to view the connection help, according to the steps to connect to the cell phone WIFI. after the connection is successful, pull down the cell phone control interface, enter the screen mirroring function, click the device name to connect to mirror casting.

(Note: Turn off your phone's Wi-Fi button to disconnect, Carplay and Airplay options are only supported by iPhone and cannot be connected at the same time, you need to choose one of them to connect and use.)

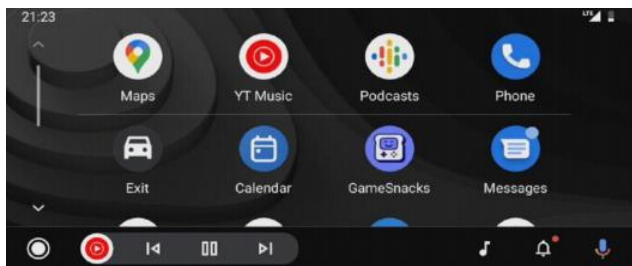
B.Android Auto with Miracast



Android Auto

Turn on your Android phone's Wi-Fi , then select the Android Auto option, click on the BT Manage option on the interface, connect to the paired phone's , and then you can enter the Android Auto Car Link interface.

When replacing a cell phone, the connection data of the previous cell phone will be erased.

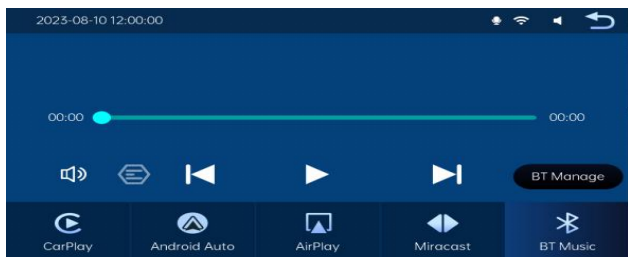


Miracast

Android dedicated casting, click Miracast button to enter the interface, click the interface on the left to view the connection help, according to the steps to connect to the phone casting.

(Note: Turn off your phone's Wi-Fi button to disconnect, Android Auto, Miracast options only support Android phones and can not be connected at the same time, you need to choose one of them to connect to use.)

C.BT music



First turn on your phone's and then select the W I F I Music option. Tap the Manage option on the interface to connect to your phone's and start playing your phone's music.



The buttons correspond to previous page, play/pause and next page, respectively.

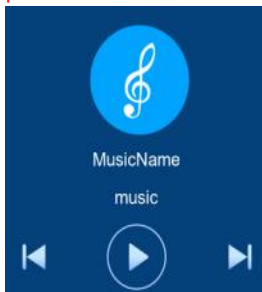
Click the Lyrics button [] to display the lyrics.

(Note: Some cell phone music player applications do not support displaying lyrics)

D.Media Player



Can play music and video files from TF card. (Note: Some formats may not be supported for playback. Video content should be viewed in a parked vehicle and in a safe environment!)



Music player in the main interface for convenient playback of music or music files from TF card.

F. Settings

Auxiliary button: you can turn on and off the auxiliary icon.

Screen saver: Off, 1 minute, 2 minutes, 3 minutes, the screen will turn off automatically after the time of protection is selected.

Driving position: Left-hand drive or right-hand drive, depending on driving habits.

Language setting: Select to switch the desired language.

Clear Connection History: You can clear the connection history with your cell phone.

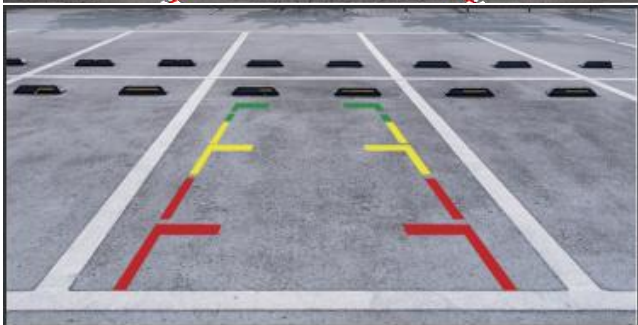
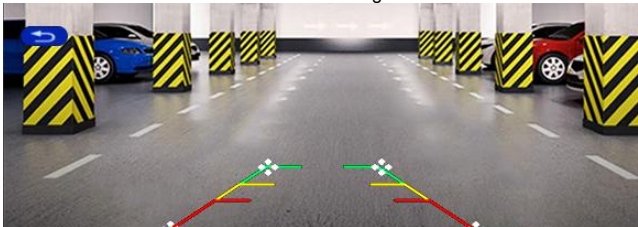
Touch sound: off, on (feedback sound for screen taps).

Restore Factory Settings: Restore to the system default settings.

Software Version: Displays the current firmware version.


G.Reverse Line Calibration

Click Reverse Line Calibration to enter settings:



Park the vehicle in the middle of the parking space and manually drag



[] to adjust the position so that the lateral coaxial line and parking line are level with the ground. After adjusting the above lines, click [Return] to confirm.

H.Car HD rear view



Notice

- Please insert the rear view plug into the machine correctly before powering on the machine.
- Do not plug and unplug the rear view head with electricity, or you will lose the signal and even damage the rear view.
- Do not touch the lens with your fingers and clean the lens surface regularly.
- Please mount the rear view head near the license plate.
- Reverse Rear View screen is only an auxiliary reference, please refer to the actual environment safety.

2. Troubleshooting

concern	prescription
unbootable	<ol style="list-style-type: none">1. Check that the DC power cord is connected correctly and that the plug is not aged or damaged.2. Check if the fuse of the power plug is disconnected or blown.
no response to touch	<ol style="list-style-type: none">1. Touch is invalid at power on, please wait for normal power on before operation.2. Check if the touch screen is damaged, do not touch the screen with sharp objects, otherwise it will be easily scratched and damaged.
Carplay won't connect	<ol style="list-style-type: none">1. First connection takes longer2. Only iPhone supports Carplay.3. Check if your phone's WiFi and functions are normal.4. Go to Settings - Clear Connection History, delete all records and reconnect.5. Restart your iPhone and reconnect it.
Android can't connect	<ol style="list-style-type: none">1. Only support Android phone.2. Update Auto and related applications on your phone to the latest version.3. Do not enable VPN on your phone.4. Check if your phone's WiFi and functions are normal.5. Restart your Android phone and connect again.

Reminder: please make sure that there is no obstacle between the phone and the device, and the Wi-Fi signal communication is smooth, otherwise the product function cannot be used smoothly.

FCC Warning

This device complies with Part 15 of the FCC Rules. Operation is subject to the following two conditions:

(1) This device may not cause harmful interference, and (2) this device must accept any interference received, including interference that may cause undesired operation.

NOTE 1: This equipment has been tested and found to comply with the limits for a Class B digital device, pursuant to part 15 of the FCC Rules. These limits are designed to provide reasonable protection against harmful interference in a residential installation. This equipment generates, uses and can radiate radio frequency energy and, if not installed and used in accordance with the instructions, may cause harmful interference to radio communications. However, there is no guarantee that interference will not occur in a particular installation. If this equipment does cause harmful interference to radio or television reception, which can be determined by turning the equipment off and on, the user is encouraged to try to correct the interference by one or more of the following measures:

- Reorient or relocate the receiving antenna.
- Increase the separation between the equipment and receiver.
- Connect the equipment into an outlet on a circuit different from that to which the receiver is connected.
- Consult the dealer or an experienced radio/TV technician for help.

NOTE2: Any changes or modifications to this unit not expressiveness by the party responsible for compliance could void the user's authority to operate the equipment.

RF Exposure Statement

To maintain compliance with FCC'S RF Exposure guidelines, This equipment should be installed and operated with minimum distance of 20cm between the radiator and your body. This device and its antenna(s) must not be co-located or operation conjunction with any other antenna or transmitter.