

User instruction

- Thank you for choosing our toy R/C car, To ensure correct enjoyable use, please read through the following user instruction and have enough understanding of the product before use.



CAUTION:

■ BATTERY OPERATED PRODUCT

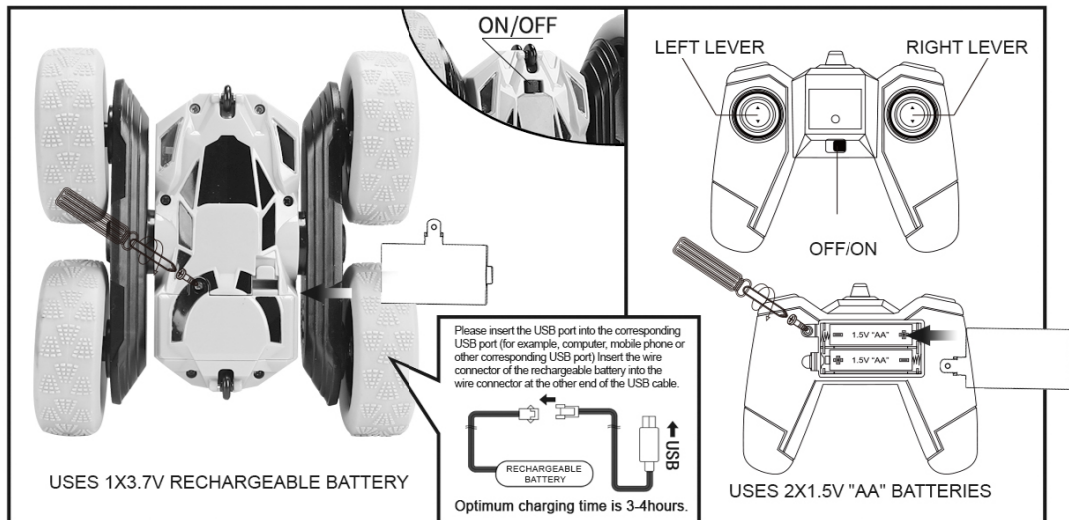
Suitable for ages 6+. As with all electric products, precautions should be observed during handling and use to prevent electric shock

How To Insert the Battery

1. Turn the switches located on both the car and the controller to the "OFF" position. (if has switch)
2. Open the batteries cover using a crosshead screwdriver.
3. Insert the batteries follow the picture below.
4. Close the battery compartment.

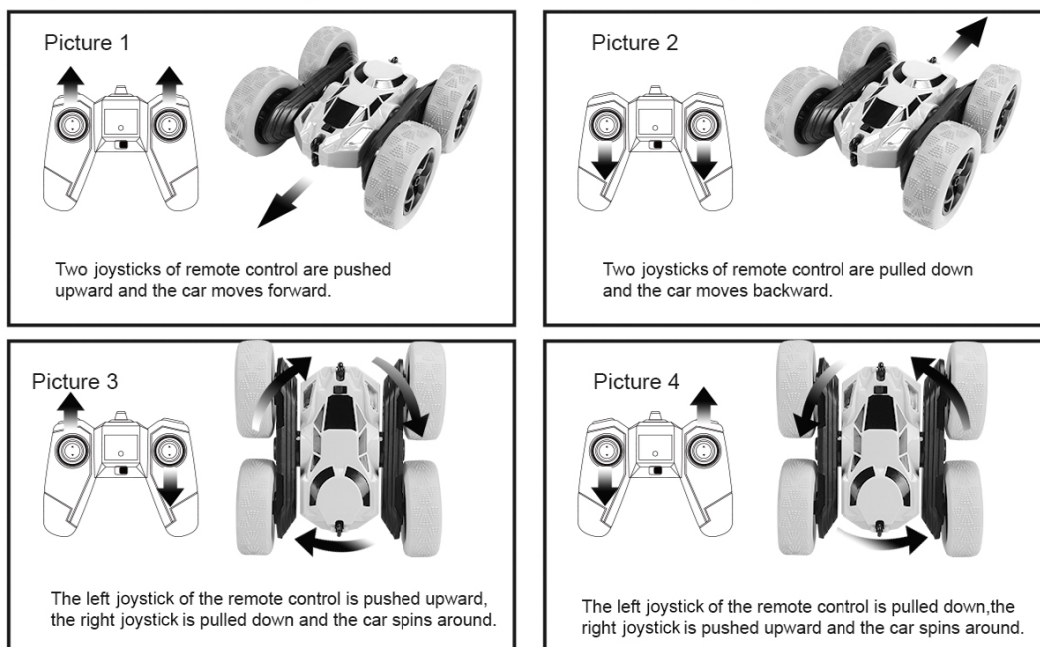
How To Play

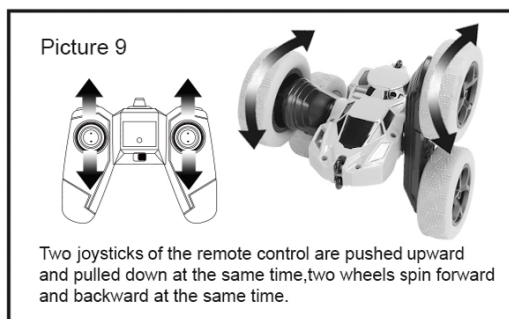
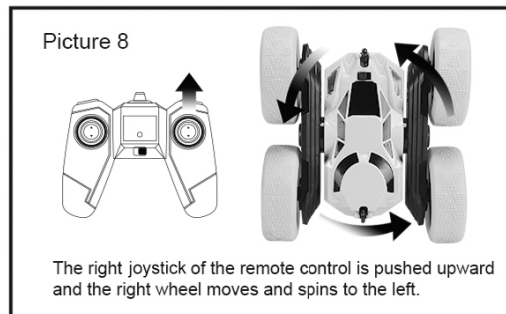
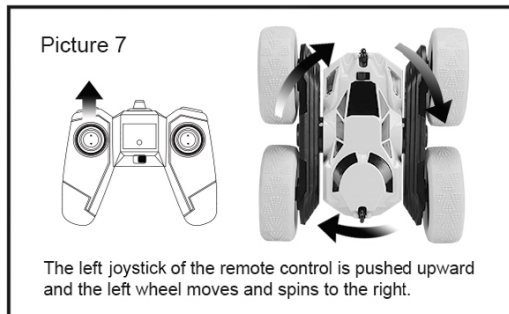
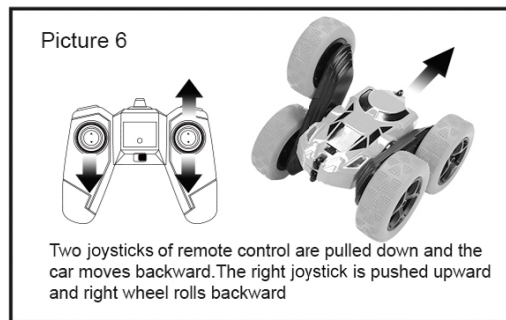
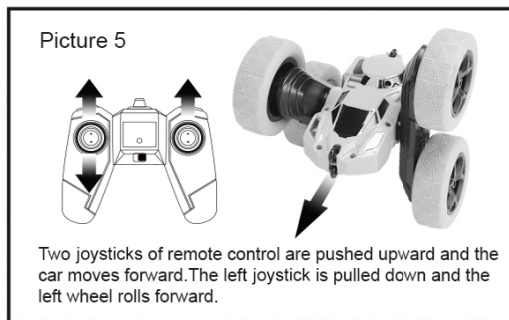
1. Turn the switches located on both the car and the controller to the "ON" position.
2. Then operate the car.
3. When your R/C model car begins to lose performance, power or function, it may be time to charge the batteries!



Basic operation picture showing how to use this product

Please note the orange body is considered the "top of the car" the blue is the bottom. The joysticks motions will be opposite as shown if the blue portion is facing up.





Battery safety Information

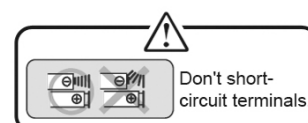
1. Don't short-circuit terminals.
2. Don't recharge non-rechargeable batteries.
3. Rechargeable batteries may only be charged under adult supervision.
4. Different types of batteries or new and used batteries are not allowed to be mixed.
5. Dispose of batteries safely. Don't dispose of batteries in fire as they may explode.
6. The battery charger should be regularly examined for damage to the cord, enclose, and other parts.
In the event of damage do not use it until it has been repaired.
7. Exhausted batteries are to be removed from the toy.
8. Keep these instructions for future reference. They contain important information.
9. Packaging has to be kept since it contains important information.
10. Rechargeable batteries are to be removed from the toy before being charged.

Care and Maintenance

1. Always remove batteries from the toy when it is not being used for a long period of time.
2. Wipe the toy gently with a clean dry cloth.
3. Keep the toy away from direct sunlight and avoid high temperature.

Pay attention to

1. In the case of insufficient power, the flipping function will be lost during playing.
2. Please do not run on the smooth ground, otherwise the flipping function will be lost during playing.
3. Please make sure the battery is fully charged before first use.



This device complies with Part 15 of the FCC Rules. Operation is subject to the following two conditions:

- (1) this device may not cause harmful interference, and
- (2) this device must accept any interference received, including interference that may cause undesired operation.

Changes or modifications not expressly approved by the party responsible for compliance could void the user's authority to operate the equipment.

Any changes or modifications not expressly approved by the party responsible for compliance could void the user's authority to operate the equipment.

Note: This equipment has been tested and found to comply with the limits for a Class B digital device, pursuant to Part 15 of the FCC Rules. These limits are designed to provide reasonable protection against harmful interference in a residential installation. This equipment generates, uses, and can radiate radio frequency energy, and if not installed and used in accordance with the instructions, may cause harmful interference to radio communications. However, there is no guarantee that interference will not occur in a particular installation. If this equipment does cause harmful interference to radio or television reception, which can be determined by turning the equipment off and on, the user is encouraged to try to correct the interference by one or more of the following measures:

- Reorient or relocate the receiving antenna.
- Increase the separation between the equipment and receiver.
- Connect the equipment into an outlet on a circuit different from that to which the receiver is connected.
- Consult the dealer or an experienced radio/TV technician for help.