

2.4G Wireless Video Door Phone User manual



2.4GHz



2Mega



Night vision



Talk



Unlock



Monitor



Take video



Take photo

1 Packing list

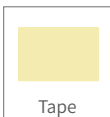
Outdoor doorbell



Doorbell



15° Wedge kit



Tape



12V 1A power adapter



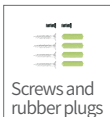
Unlock control



Optional Remote control



15° Corner kit



Screws and rubber plugs



DC cable



Screwdriver



Optional Battery (or for indoor monitor)

Indoor monitor



Indoor monitor

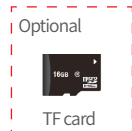


5V USB charger

TypeC USB Cable



Hanging board



Optional

TF card

2 Product Introduction

It can be used in offices, villas, apartments, etc.

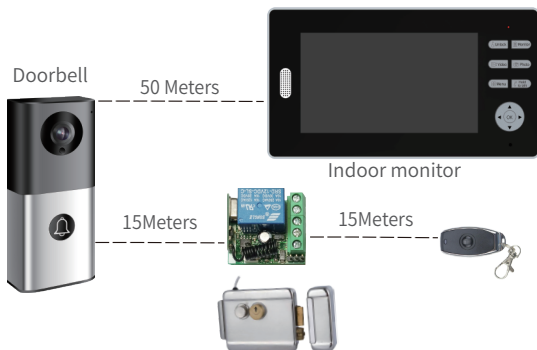
No need network, no delay, the doorbell is fixed on the wall, wooden door or glass door, the indoor monitor can be used freely in the place with a stable signal, the indoor monitor can be hung on the wall, wall cabinet, etc., can also be placed on the desk, dining table, coffee table and so on.

The unlock control is simple to connect with the electric lock or magnetic lock. All of the above are wireless connections, simple installation.



3 System specification

When the visitor presses the doorbell, the real-time video appears on the indoor monitor, the indoor monitor can take a picture or record manually, and automatically take video or take two photos to the TF card when visitor call or user press 'Unlock' button.

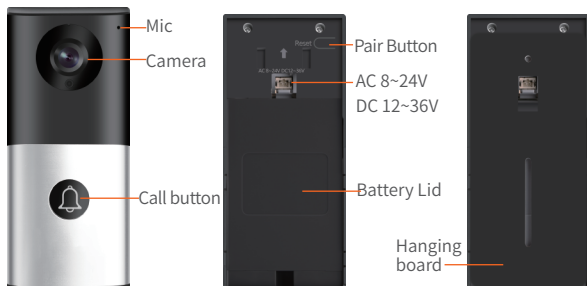


Please refer to "Pairing doorbell" and "Pairing unlock control" on page 8.

Pair remote control with unlock control

1. Press the "pair" button of the unlock control, the pair light will flash one time, then press the "unlock" button of the remote control, the pair light will flash continuously.
2. Then press the "pair" button of the unlock control again, the pair light stops flashing, then press the "unlock" button of the remote control again, the pair light will flash several times. The pairing is successful.

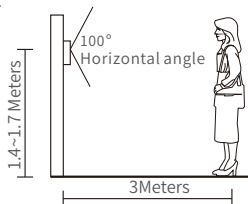
4 Outdoor doorbell



5 Doorbell Installation diagram

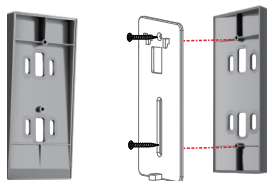
The outdoor doorbell stands by 0.3mA. If you do not monitor for a long time, the outdoor doorbell with 3200mAh battery can work for two months, the power input of the doorbell is AC 8~24V, DC 12~36V.

The doorbell is installed at a height of 1.4~1.7 meters from the ground, Try to avoid sun and rain, can be fixed on the wall, wooden board, door.



Add Wedge Kit or Corner Kit

Use the Corner Kit to angle your Doorbell towards your walkway, so you get a better view of visitors coming to your door.



1 Battery powered

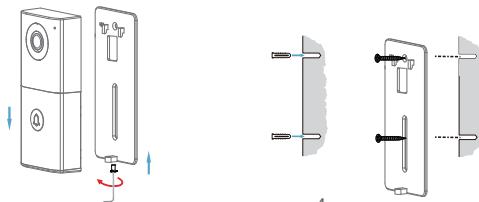
1.1 Tape fixed

Use double-sided tape to cut the picture to the appropriate size, then tape it on a smooth surface, such as a glass door, a wooden door or a flush wall.

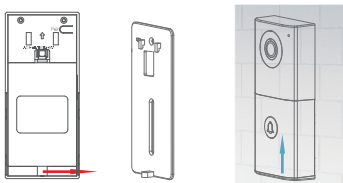


1.2 Screw fixed

1 Remove the bottom screw 2 Drill two holes and fasten them with screws.



- 3 Install the hanging plate on the doorbell part as shown in the figure, and then push it up and fix it with the bottom screw.

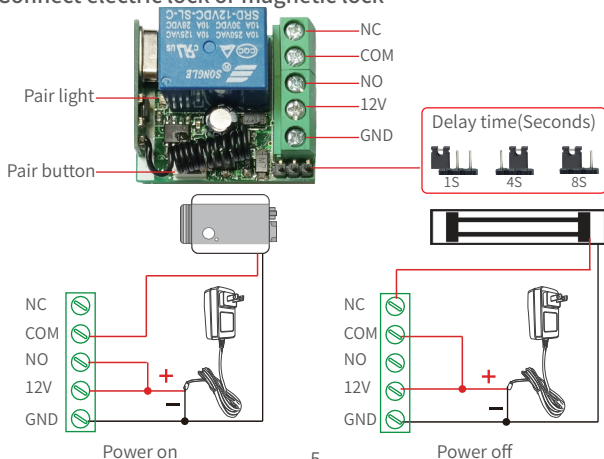


2 AC8~24v or 12~36V power supply

If the doorbell can be connected to the power supply at the door, please follow the screw fixing method, and drill a hole through the DC cable, and plug the 12V power adapter into the DC cable.



3 Connect electric lock or magnetic lock



6 Indoor monitor

The power consumption of the monitor is high, it is recommended to always connect to the 5V USB charger .



6.1 Button function



Short press this button to see the visitor at the door when standby, short press again to turn off the screen.
Screen off after 20 seconds of no any operation.
Long press for 3 seconds then monitor the long time, short press again to exit the monitoring.



Short press to take a photo, the photo will be saved in the TF card.
If Monitor cannot take photos or videos, please insert the TF card.



Short press to start recording, short press again to stop recording.



Long press then hold to talk, and release the voice to the doorbell.



Short press to enter the menu, the sub menu returns to the last level.



In the shortcut screen, adjust the volume of the doorbell.
In the menu, press one of the two buttons to move the menu cursor.



In the shortcut screen, adjust the volume of the monitor.
In the menu, press one of the two buttons to move the menu cursor.



Short press this button to unlock, before using, connect the lock and the indoor monitor has been paired with the unlock control.

6.2 Menu

1 Visitor log



Each folder has a maximum of 1000 records. Press ►◄▼▲ to select the folder. Press the<OK> button to open the selected folder, press the <Hold to talk> to delete folder.



101_Rec



102_Rec



103_Rec



104_Rec



105_Rec

1.1 Record files

Press ▲▼ to select the file; press ◀▶ to turn page . ➡ points to the selected, press <OK> to browse. Press <Hold to talk> to delete file; There are 4 types of records.

	File Name	Time	Record type
➡	Rec_0001.jpg	2020/07/18 19:36:54	
	Rec_0001.mp4		Someone calling...
	Rec_0001.jpg		Unlock...
	Rec_0001.mp4		Manually take photos
🗑️	Rec_0001.jpg		Manual recording

1.2 Browse videos or photos

Press ◀▶ to fast play, press <OK> to pause, press ▲▼ to browse, press <Hold to talk> to delete.



2 Settings



Settings

The record mode is a photo or video taken by a calling or unlocking. Select <Record Mode> and press <OK> to enter the options, and press <OK> after selecting.
Formatting the SD card will delete all photos and videos!

1 Record mode

☒ 📷 Take 2photos

☐ 🎥 Record 3s

☐ 🎥 Record 5s

☐ 🎥 Record 10s

2 Format MicroSD

Capacity:

Total Capacity: 345678 MB

Remaining: MB



Format MicroSD
Will delete all records

☐ Yes

☒ No

3 Ringtones



Ringtone

Press ►◄ ▲▼ to select the ringtone; the selected ringtone will be displayed in orange and played.
After selected the ringtone, press <Menu> to save and exit.



Dingdong



For Elise



Going Home



Time



Trip



Silver flute



Rock It



Ring



Whistle



Yue drum



500miles



Tel

4 Time setting



Time

Press ◀▶ key to select the date or time; the orange is the selected part.
Press ▲▼ key to adjust the date or time; press <OK> key to save.
Please connect the power within 4 hours after removing the battery or running out of power, otherwise the time needs to be readjusted.

2020/08/09

16:45:13

5 Pairings



Pairing

One doorbell can only be connected to one monitor.
The doorbell can be paired with the unlock control.
The unlock control can be paired with the remote control.

1 Pair Doorbell ✓ Paired successfully

- 1 Select <Pair Doorbell> then press the <OK> button of Monitor.
- 2 Press <Pair> on the upper right corner of the back of Doorbell.

2 Unlock control Press <OK> to pair

- 1 Connect the 12V power supply to the unlock control.
- 2 Press <pair> button of unlock control, the pair light flashes once.
- 3 Press the <OK> button of the monitor, the pair light of the unlock control will continue to flash.
- 4 Press the <pair> of unlock control again, the light stops flashing.
- 5 Press the <OK> button of the monitor again, the pair light flashes for 3 seconds and goes out, and the pairing is successful.

FCC WARNING

This device complies with part 15 of the FCC Rules. Operation is subject to the following two conditions: (1) this device may not cause harmful interference, and (2) this device must accept any interference received, including interference that may cause undesired operation.

Any changes or modifications not expressly approved by the party responsible for compliance could void the user's authority to operate the equipment.

NOTE: This equipment has been tested and found to comply with the limits for a Class B digital device, pursuant to Part 15 of the FCC Rules. These limits are designed to provide reasonable protection against harmful interference in a residential installation. This equipment generates, uses and can radiate radio frequency energy and, if not installed and used in accordance with the instructions, may cause harmful interference to radio communications. However, there is no guarantee that interference will not occur in a particular installation.

If this equipment does cause harmful interference to radio or television reception, which can be determined by turning the equipment off and on, the user is encouraged to try to correct the interference by one or more of the following measures:

- Reorient or relocate the receiving antenna.
- Increase the separation between the equipment and receiver.
- Connect the equipment into an outlet on a circuit different from that to which the receiver is connected.
- Consult the dealer or an experienced radio/TV technician for help.

To maintain compliance with FCC's RF Exposure guidelines, This equipment should be installed and operated with minimum distance between 20cm the radiator your body: Use only the supplied antenna.