

Smart Device Manual



Product introduction

This product uses Zigbee millimeter wave human presence detection module, human presence, static, micro-motion and motion can be detected, and flexibly configure sensor parameters to adapt to different scenarios

Can be widely used in lighting, security, home, hotels, garages, buildings, transportation and other industries.

Micro-motion detection:

Tilting head, waving, raising hand, turning around, brushing mobile phones, flipping books, etc;

Motion detection:

Walking, Trotting, Fast running, Spinning in circles, High jumping and other sports;

Basic parameters

Product name	Smart Human Presence Sensor
Product model	YXZBRB58
Product Size	72.0mm*72.0mm*31.0mm
Radar frequency	2.405~2.480 GHz
Detect Angle	110°
Detect Distance	0~10 m
Working temperature	-10~55°C
Working humidity	0%-95%RH (non-condensing)

Note: * The parameters are simulated standard environment test values, and there may be differences in different scenarios.

2) Other objects that move or shake such as electric fans.

3) High-voltage AC power supply, rectifier bridge, high-power electrical appliances and other circuits.

3. Product installation considerations

When multiple Smart human presence sensors are installed, they should be parallel, in the same direction or as far as possible Install in opposite directions, avoid direct exposure to each other, and keep a distance of more than 1m.

Before Your Start

Zigbee ☐ Wifi ☐ Mesh ☐ Check the Packaging

1. Check the version by looking at the product packing

1) If the Smart Presence Sensor is Zigbee version, ensure that the APP is bound with a Tuya Zigbee hub;

Connect your Smart Human Presence Sensor to smartphone

Set up your Smart Life account

1. Download Smart Life app

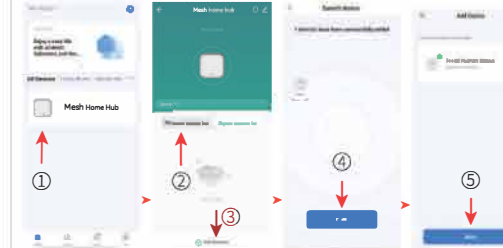
Before setting up your Smart Human Presence Sensor, make sure you have the latest version of the Smart Life app from the app store.



2. Create your Smart Life account.

If you're new to Smart Life, tap Sign up to create account. enter your mobile phone or email address, then tap get verification code, enter the code you receive in your phone or email to set up the password. If you already have a Smart Life account used for other devices, tap log in with existing account.

4. Mesh version of this sensor requires a Mesh gateway to use, go to the Mesh gateway page, click "Mesh Device List", and add a device.



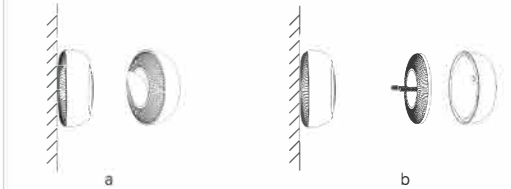
Mesh version enter the network steps

Smart Life App Parameter settings



Installation and operation

- Two install methods
 - Double-sided adhesive stickers, just paste the double-sided adhesive on the bottom, fix it at the required installing position, and then rotate and screw on the main device;
 - Screw fixing, Fix the bottom with screws at the required installing position, and then rotate and screw on the main device;



2. Operation
Check alarm history
Scene linkage setting

Take the linkage Zigbee siren alarm as an example, please add the siren alarm yourself and follow the steps below:
(Please refer to the Zigbee siren alarm manual for how to use)

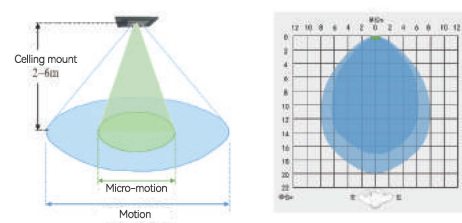
Product structure description



- Indicator light
- Usb Type-C Power port
- Double-sided adhesive stickers area
- Screw holes
- The base
- Rotate fixing slot
- Reset Key

Packing List:

- Smart Human Presence Sensor *1
- Double-sided adhesive stickers *1
- Screw *2
- Power Line *1
- Manual *1



Detection area
installation height: 2-6m
Micro-motion sensing radius: 2m-4m
Motion sensing radius: 3m-5m

Targets can be easily detected in dark area;
Big targets and Large motion amplitude
targets can be easily detected in light area

Note:

1. The signal penetrates the object:

Glass, thin wood panels, ceramics, and plastic can be penetrated, but brick walls not easy to penetrate.

2. Source of interference:

1) Try to avoid putting this product against large metal equipment, ventilation pipes, fire pipes, drainage pipes

2) If the Smart Presence Sensor is the MESH version, it will require a MESH Bluetooth hub.

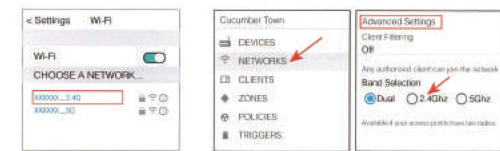
3) If the Smart Presence Sensor is the WIFI version, pls ensure that the mobile phone is connected to the 2.4G WiFi frequency band;

2. The Smart Presence Sensor is ONLY worked with 2.4GHz Wi-Fi signal, NOT 5GHz Wi-Fi signal.

1) If you only have 5 GHz Wi-Fi router, you will NOT be able to complete the connection.

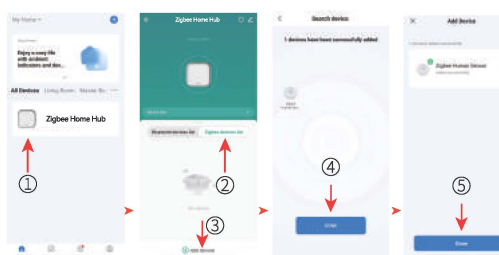
2) If you are using a dual Wi-Fi router and it broadcast 2 Wi-Fi signals, make sure your phone was connected with 2.4 GHz Wi-Fi signal.

3) If you are using a dual Wi-Fi router but it broadcast only 1 Wi-Fi signal, you will have to manage your Wi-Fi router and change the settings to have 2.4GHz Wi-Fi.



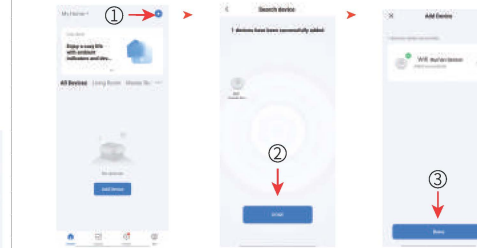
Connect your Smart Presence Sensor to Smart Life app

- Turn on your smartphone's bluetooth, open the Tuya Smart Life app.
- Press and hold the reset button for 5 seconds, and enter the network connecting mode after the indicator light flashes;
- Zigbee version of this sensor requires a Zigbee gateway to use, go to the Zigbee gateway page, click "Zigbee Device List", and add a device.



Zigbee version enter the network steps

5. WiFi version, click the plus sign "+" in the upper right corner of the APP home page to add sub-device, you can choose any WiFi device.



Wifi version enter the network steps

6. A complex WiFi name or password may cause failure.

7. Wait for the device to be added successfully and ready to use.

Parameter Explain:

Sensitivity: 0-9

Too low may cause the micro-movement of the human to be undetectable, Too high sensitivity may lead to detection through walls;
Select according to the actual environment;
Recommend to general small room 6-8, large room 8-9.

Holding time:

General small room 6-8, large room 8-9.

Unmanned delay time:

Delay time from manned to unmanned, recommend to set about 30 seconds.

Minimum detection distance:

Recommend to set about 0.1 meters

Maximum detection distance:

Ceiling mount recommend to set about 3 meters

Scene linkage settings example



FCC STATEMENT :

This device complies with Part 15 of the FCC Rules. Operation is subject to the following two conditions:

- (1) This device may not cause harmful interference, and
- (2) This device must accept any interference received, including interference that may cause undesired operation.

Warning: Changes or modifications not expressly approved by the party responsible for compliance could void the user's authority to operate the equipment.

NOTE: This equipment has been tested and found to comply with the limits for a Class B digital device, pursuant to Part 15 of the FCC Rules. These limits are designed to provide reasonable protection against harmful interference in a residential installation. This equipment generates uses and can radiate radio frequency energy and, if not installed and used in accordance with the instructions, may cause harmful interference to radio communications. However, there is no guarantee that interference will not occur in a particular installation. If this equipment does cause harmful interference to radio or television reception, which can be determined by turning the equipment off and on, the user is encouraged to try to correct the interference by one or more of the following measures:

- Reorient or relocate the receiving antenna.

- Increase the separation between the equipment and receiver.

- Connect the equipment into an outlet on a circuit different from that to which the receiver is connected.

- Consult the dealer or an experienced radio/TV technician for help.

FCC Radiation Exposure Statement:

This equipment complies with FCC radiation exposure limits set forth for an uncontrolled environment. This equipment should be installed and operated with minimum distance 20cm between the radiator & your body.