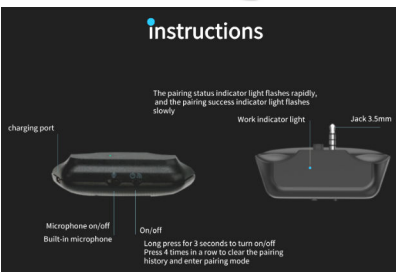


PS4 Wireless Audio Converter



instructions



Description

Bluetooth version: V5.0
Support mode: HSP/HFP/A2DP/VARCP
Battery: 3.7V 300mAh
Charging voltage: DC 5V
Charging current: 2A/1A
Weight: 17g

Instructions

1. Press and hold the power button for 3 seconds, the blue light will turn on, and it will flash rapidly.
2. Turn on the wireless Bluetooth earphones, search for pairing status, wait for 10 seconds, and the pairing will automatically succeed.
3. When resetting, click 4 times in a row to clear the pairing history and search for the status again.
4. The red light will turn on during charging, and the green light will turn on after fully charged.

Q&A For TB-P41

Q: When TB-P41 is constantly in blue light flash search pairing?

A: Check if the phone is connected to the Bluetooth headset. Please turn off the phone's Bluetooth function and connect the headset to the TB-P41 audio adapter.

Q: Is the operation complicated? Is pairing easy?

A: The product comes with an instruction manual, as well as an electronic version of the manual.

The pairing operation of TB-P41 is as simple as pairing regular Bluetooth earphones, completed within 10 seconds. Once the Bluetooth earphones are successfully paired, they can store pairing data and automatically connect the next time.

Q: No sound when connected to headphones?

A: Click the PS button to open the "Peripheral Devices" and

"Audio Devices" pages of the PS4 host for settings.

Q: Why is the sound intermittent when connected?

A1: Ensure a stable connection with the handle;

A2: Check that the earphones and adapter are fully charged.

FCC Warning Statement

Changes or modifications not expressly approved by the party responsible for compliance could void the user's authority to operate the equipment. This equipment has been tested and found to comply with the limits for a Class B digital device, pursuant to Part 15 of the FCC Rules. These limits are designed to provide reasonable protection against harmful interference in a residential installation. This equipment generates uses and can radiate radio frequency energy and, if not installed and used in accordance with the instructions, may cause harmful interference to radio communications. However, there is no guarantee that interference will not occur in a particular installation. If this equipment does cause harmful interference to radio or television reception, which can be determined by turning the equipment off and on, the user is encouraged to try to correct the interference by one or more of the following measures:

- Reorient or relocate the receiving antenna.
- Increase the separation between the equipment and receiver.
- Connect the equipment into an outlet on a circuit different from that to which the receiver is connected.
- Consult the dealer or an experienced radio/TV technician for help.

This device complies with part 15 of the FCC Rules. Operation is subject to the following two conditions: (1) This device may not cause harmful interference, and (2) this device must accept any interference received, including interference that may cause undesired operation.

The device has been evaluated to meet general RF exposure requirement.