

# Ubox APP

## Manual



V.80

\* Please read it carefully before using the product

### I. Ubox APP Download and Registration

**1. Download and Install the Mobile APP**  
Scan the following QR codes or search for "Ubox" from the App Store (for iOS devices) or Google Play Store (for Android smartphones) to download and install the app



#### 2. APP Registration

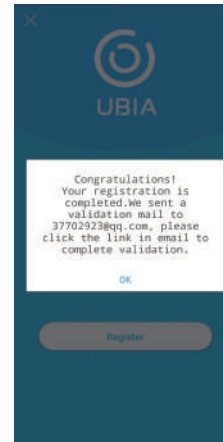
Open the app then enter your email, select to agree the agreement, and then click "registration" tab to create a new account (For better user experience, please allow to open all permissions to avoid missing any notifications from the app.)



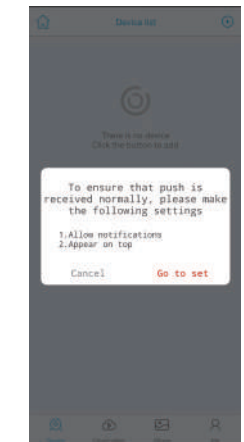
Set the login password and confirm the login password. Enter the code showed on the right side. Then press "Register" to the next step. (For your password safely, the password should have at least 8 characters plus combinations of letters)



Ubia will send you an email verification, please go to your mail box and click the link to complete the verification



Follow steps to Cancel or go to set the message notifications



Congratulations, you have successfully registered your Ubox account. Please login your account and start to add your 4G/WiFi camera.

### II. 4G Camera Connection

Insert the SIM card into camera, then power on the camera

Please wait until the 4G camera indicator light stays blue.

#### Indicator Light

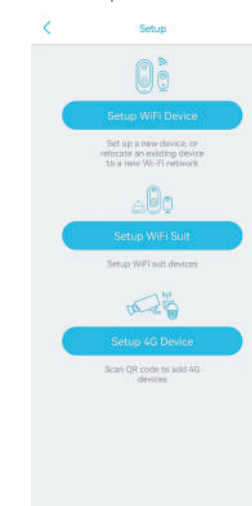
**Blue and yellow light flashing**  
The camera searching the 4G network

**Blue light on**  
4G network connected successfully

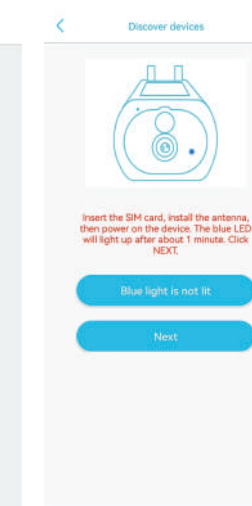
#### Red light on

4G network Connection Failed  
Please check:  
1. Whether the SIM card has data  
2. Whether the 4G signal is good  
3. Whether your local network operator supports certain 4G LTE Bands

Select 'Setup 4G Device'



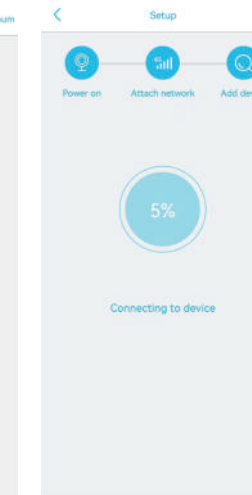
Select 'Next'



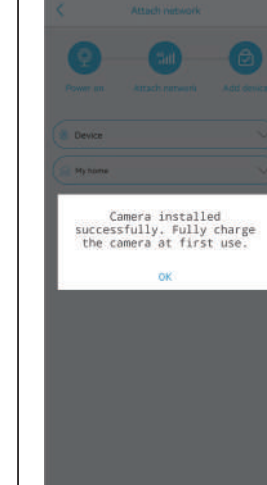
Use your smart phone to scan the QR code on the camera



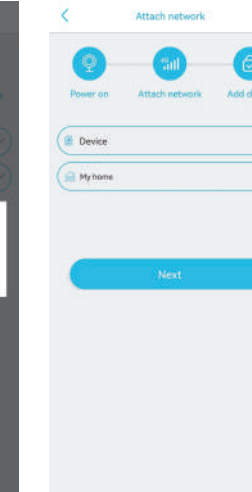
It might take 5-60 seconds to complete the pairing, please wait patiently



Congratulations on the pairing if you have this similar interface, click "ok"

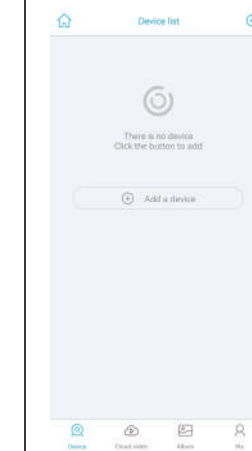


Select the name and the camera location, click 'Next'

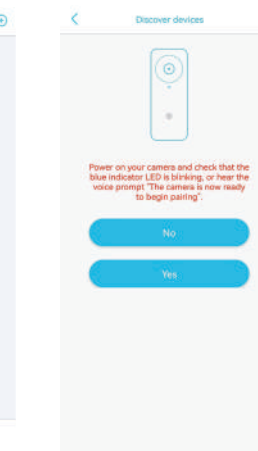


### III. WiFi Camera Connection

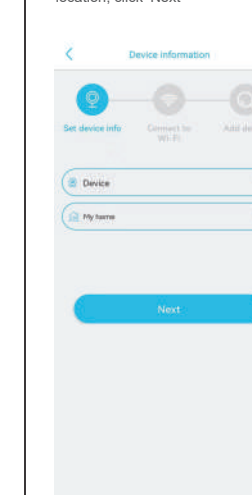
Click 'Add a device' to add a smart device



Power on the camera and press 'Yes'



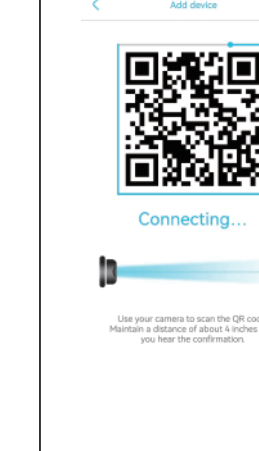
Select the name and the camera location, click 'Next'



Choose your WiFi Name and enter the WiFi password, then click 'QR code configuration' (only support 2.4G WiFi)



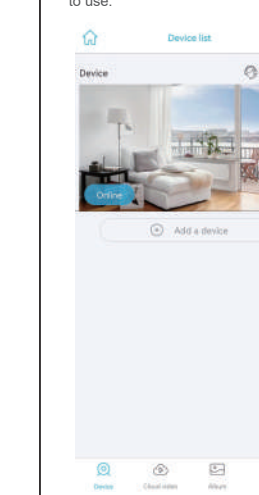
Use the camera to scan the QR code, then you can hear the voice of confirmation



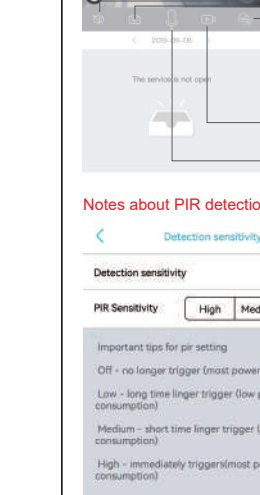
When the camera pairing is successful, you will get the following information



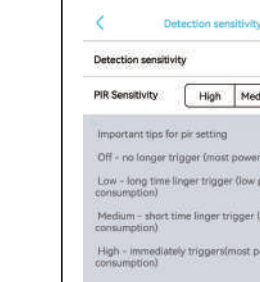
Setup success! The camera is ready to use.



Setup success! The camera is ready to use.



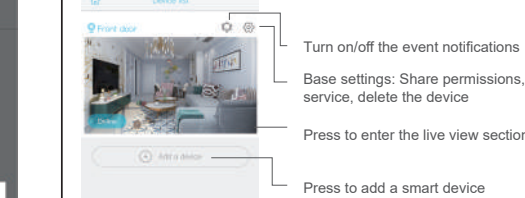
#### Notes about PIR detection



Tip: There will be no further notification of any change of the above functions. Please take the actual object as the standard. Thanks!

### IIII. Using The APP

Enter to add the camera locations



Turn on/off the event notifications

Base settings: Share permissions, Cloud service, delete the device

Press to enter the live view section

Press to add a smart device

Account Info and value-added account management

Device Setting & Device Info

Switch to 'floodlight' mode or 'IR light' mode

Full screen

Turn on/off the speaker

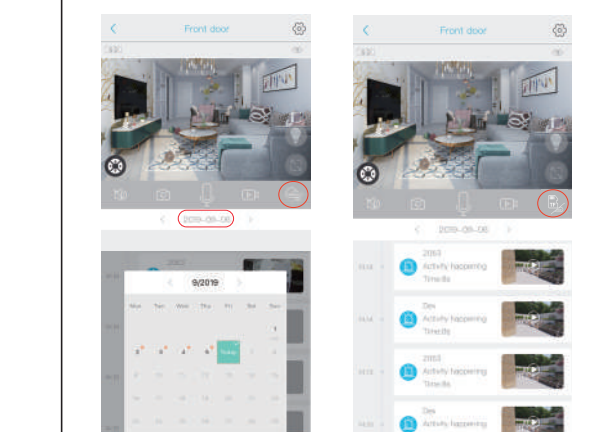
Screenshot the live view and save it to the album

The playback switch of 'TF Card Storage' and 'Cloud Storage'

Get video recordings of live view actions and events

Microphone

Choose Cloud storage or TF card storage from the right side of the middle bar. Click the date below the middle bar to select a specific date to check all videos saved in Cloud storage or TF memory card correspondingly.



1) The battery life of this solar camera will be affected by the duration of the wake-up time and the frequency of wake-ups. In order to extend the battery life in a crowded environment, it is recommended to set the detection sensitivity to "Low" or to disable the detection sensitivity.

2) This low-power consumption solar-powered security camera has two power modes: performance mode and standby mode. Normally, this solar camera will be in standby mode. It doesn't transmit data unless it is woken manually or by event detection. It is not designed for continuous recording.

3) This solar camera has a one-month free cloud service. You might need to subscribe to the cloud service through the UBOX APP after the trial period expires.

#### FCC Warning

This device complies with Part 15 of the FCC Rules. Operation is subject to the following two conditions:  
(1) This device may not cause harmful interference, and (2) this device must accept any interference received, including interference that may cause undesired operation.

NOTE 1: This equipment has been tested and found to comply with the limits for a Class B digital device, pursuant to part 15 of the FCC Rules. These limits are designed to provide reasonable protection against harmful interference in a residential installation. This equipment generates, uses and can radiate radio frequency energy and, if not installed and used in accordance with the instructions, may cause harmful interference to radio communications. However, there is no guarantee that interference will not occur in a particular installation. If this equipment does cause harmful interference to radio or television reception, which can be determined by turning the equipment off and on, the user is encouraged to try to correct the interference by one or more of the following measures:

- Reorient or relocate the receiving antenna.
- Increase the separation between the equipment and receiver.
- Connect the equipment into an outlet on a circuit different from that to which the receiver is connected.
- Consult the dealer or an experienced radio/TV technician for help.

NOTE 2: Any changes or modifications to this unit not expressly approved by the party responsible for compliance could void the user's authority to operate the equipment.

#### RF Exposure Statement

To maintain compliance with FCC's RF Exposure guidelines, This equipment should be installed and operated with minimum distance of 20cm between the radiator and your body. This device and its antenna(s) must not be co-located or operation in conjunction with any other antenna or transmitter.

#### SPECIAL NOTES!