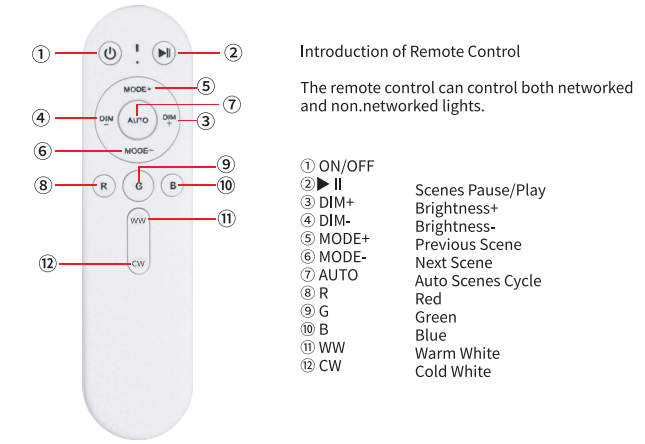


Installation

1. Before installing the permanent lights, please connect each segment of the lights and then power on to confirm if all devices are functioning properly. Note: Connect first, then power on. Do not connect after powering on to avoid sudden surge of current that may damage the devices.
2. Clean the surface of the planned installation area with a cloth or tissue. Ensuring it is dry and free from debris. It is recommended to install under the eaves, keeping 2 - 4 inch away from the wall.
3. Peel off the backing film on the back of the permanent light. Align the light vertically with the edge of the eave. Press the light firmly against the surface for 10 seconds to ensure a strong bond. Repeat for each light.
4. After installation, use the provided screws and clips from the accessory pack to reinforce the lights (especially at ends/corners) and manage any loose wiring.

-01-

Packing List



Introduction of Remote Control

The remote control can control both networked and non.networked lights.

- | | |
|----------|-------------------|
| ① ON/OFF | Scenes Pause/Play |
| ② II | Brightness+ |
| ③ DIM+ | Brightness- |
| ④ DIM- | Previous Scene |
| ⑤ MODE+ | Next Scene |
| ⑥ MODE- | Auto Scenes Cycle |
| ⑦ AUTO | Red |
| ⑧ R | Green |
| ⑨ G | Blue |
| ⑩ B | Warm White |
| ⑪ WW | Cold White |
| ⑫ CW | |

-02-



Controller Function

- ON/OFF/MODE
Long press 3-5 seconds-Network
Double click-OFF
Short press-ON Switch scenes in order:
RGB / WW / CW / Christmas / Thanksgiving / Halloween / Football Day / Wind Chime / Games / Holidays / Fantasy / Meteor / Colorful Pinball / Neon word

Tips:

1. When the light string is connected to the APP for the first time, the plug-in mode is the distribution mode that will automatically exit after flashing for about 3 minutes, and the light will always be on.
2. The lamp that has been connected to the APP is not in the distribution network mode after being powered on, but is always on.
3. If you want to reconnect the light string to a new mobile phone, you can connect the distribution network of the new mobile phone in the following two ways:
① Press and hold the controller for 3-5s, so that the light will enter the flashing breathing state, enter the network distribution mode, and connect according to the steps of adding APP.
② When the light string is plugged in, switch the wall switch repeatedly for 3 times. And then connect according to the steps of adding APP.

-03-

App Functions

Connect The Device Via The "Tuya" App

1. First, search for the "Tuya" or "Smart Life" APP in the Apple Store or App Market, download and install it, or scan the QR code below to download and install.

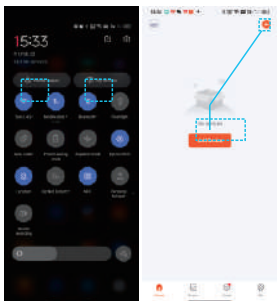


2. Product distribution network (please confirm that the mobile phone is connected to 2.4G Wi-Fi and Bluetooth is on):

① After the product is properly connected to the lamp, turn on the power. To enter the distribution network, (When the device is connected to a new phone it is necessary to repeatedly turn on and off the power switch 3 times, or press and hold the controller button for 5 seconds until the light flashes to enter the distribution network mode)

② Open the "Tuya" APP, and turn on the Bluetooth and WiFi of the mobile phone. Select "Add Device", add the screen bar to the APP according to the on-screen prompts, and you can start using.

-04-

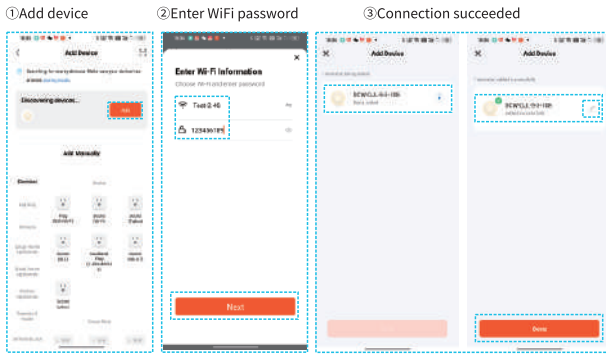


Notice:

The first time you open the APP, if there is an option to allow permissions, please select "Allow"

If the android phone can not search for bluetooth please check whether to open the position!

3.Device Connection:



Tip:

The Bluetooth function in WiFi+Bluetooth dual mode is bluetooth distribution network, automatic identification of the device, after the WiFi and Bluetooth is connected to the device, if the WiFi is disconnected or there is no WiFi, the mobile phone 4G or 5G signal can be used, and the bluetooth connection can be used

-05-

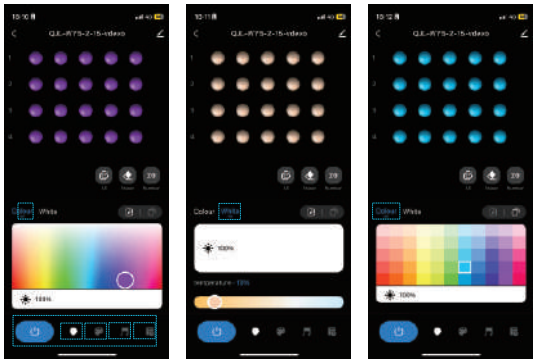


"Tuya" App Introduction:

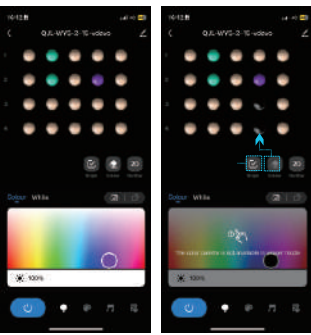
4. Number of Lamps
If your light string has been cut during use, you can adjust the actual length to better set up the light number, then confirm.

5. Light Color Setting Mode

- ① ② : When you enter the App, you can see five sections: On/Off, Colour, Scene, Music, Plan. Detailed function description please check below:
③ : Color Card ④ : Individual light control color & Individual light control turn off
⑤ : Colors transiti



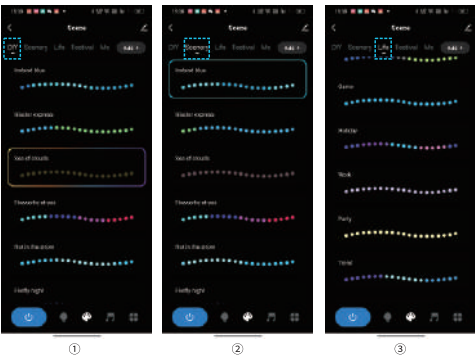
-06-



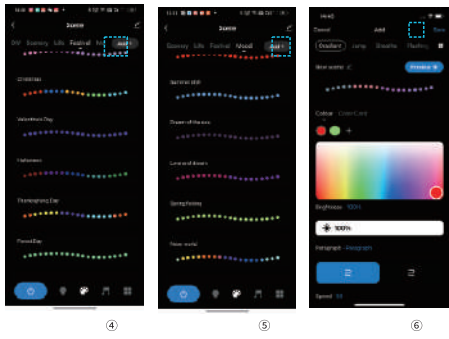
Scene Mode

8. Scene: It has 44 different scene mode. Supports DIY 50+scenes, edit your favorite scenes (Note: When you're done editing, be sure to preview and click Save. Next time you open this page, the DIY scene will also be saved.)

Scene Mode: ① DIY ② Scenery ③ Life ④ Festival ⑤ Mood ⑥ Add+

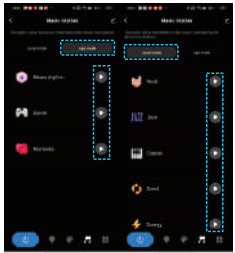


-07-



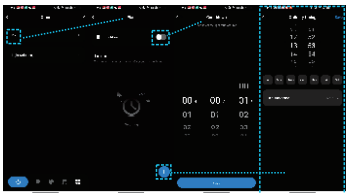
Music Mode

9. Music: The music function requires access to the music UI, which recognizes external sounds through the phone's MIC, and identify the rhythm of the light changes along with the sound through the app's algorithm.



- Two modes of receiving music rhythm:
- ① Local: refers to the music rhythm received by the light string controller (the closer the sound source is to the controller, the better the reception effect).
 - ② APP: As a receiver, the mobile phone receives music rhythm (the closer the sound source is to the mobile app, the better the reception effect).

Tips: If you leave the music rhythm mode, the rhythm will stop. If the phone rests on the screen, the lights will stop. In order not to violate the privacy issue.



Plan

10. Plan: The owner can freely set the on/off time of the string light every day.

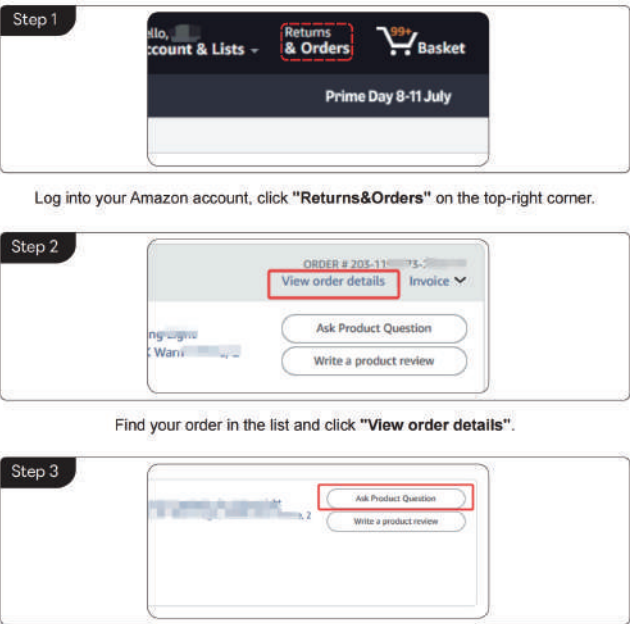
-08-

Important Safety Instructions

1. Keep out of reach of children.
2. Use the product with the provided power adapter only. Keep the power adapter away from water.
3. Connect all light strings together before installing the Permanent Outdoor Lights. Only then, turn on the power to test that all lights work normally.
4. Always connect light strings with power off. Connecting lights while power is on will damage them.
5. Do not install the string lights near any heat sources.
6. Keep away from combustible materials and do not allow the lamp beads to come into contact with walls, ceilings, fabrics, etc.
7. Do not stare directly at the lights for long time.

-09-

CONTACT US



Should you experience any issues while operating any of our products, you can directly reach out to our Customer Support via Amazon Orders. Or you can send your inquiry to our Official Customer Support Email found on the packaging box.



-10-

This device complies with part 15 of the FCC Rules. Operation is subject to the following two conditions: (1) This device may not cause harmful interference, and (2) this device must accept any interference received, including interference that may cause undesired operation.

Any Changes or modifications not expressly approved by the party responsible for compliance could void the user's authority to operate the equipment.

Note: This equipment has been tested and found to comply with the limits for a Class B digital device, pursuant to part 15 of the FCC Rules. These limits are designed to provide reasonable protection against harmful interference in a residential installation. This equipment generates uses and can radiate radio frequency energy and, if not installed and used in accordance with the instructions, may cause harmful interference to radio communications. However, there is no guarantee that interference will not occur in a particular installation. If this equipment does cause harmful interference to radio or television reception, which can be determined by turning the equipment off and on, the user is encouraged to try to correct the interference by one or more of the following measures:

- Reorient or relocate the receiving antenna.
- Increase the separation between the equipment and receiver.
- Connect the equipment into an outlet on a circuit different from that to which the receiver is connected.
- Consult the dealer or an experienced radio/TV technician for help.

This equipment complies with FCC radiation exposure limits set forth for an uncontrolled environment. This equipment should be installed and operated with minimum distance 20cm between the radiator & your body.