



V380 Pro PRODUCT MANUAL

Intelligent • Technology • Security

Model : XD

Note: Read carefully before using the device and keep it for subsequent use



Download

Search for "V380 Pro" in the App store or scan the QR code below to download and install the V380 Pro APP.



Scan the QR code to download the V380 Pro APP



Model : XD

Reset the camera

1. Power on the camera.
2. Press and hold the reset button for several seconds, the camera will prompt "Restore factory default setting".

Night Vision Light



Lens



Switch

Reset button

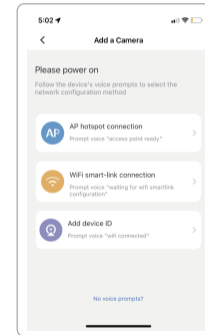
USB interface

Slot for memory card

Note: The position of the reset button is for reference only, depending on your device.

Hotspot configuration

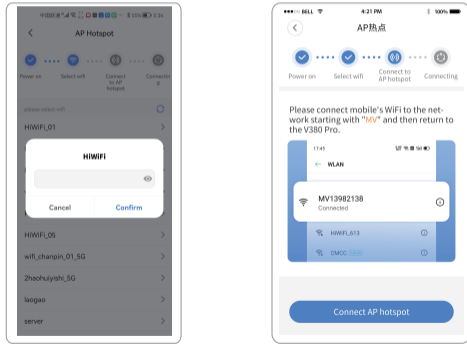
1. Click "Can't find the QR code on the device?".
2. Select "WiFi Smart Camera" - "AP hotspot connection".



Note: Please connect your phone to wifi required by your device first.

Android

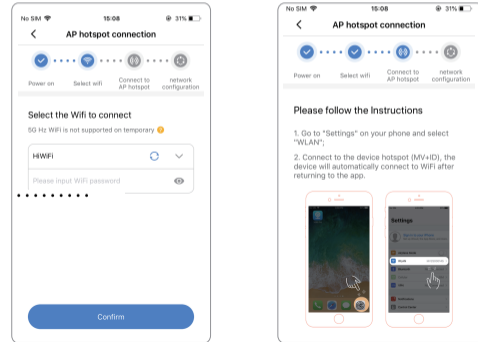
1. Select WiFi and enter your WiFi password.
2. Select "Connect AP hotspot" button and connect to the device hotspot(MV+ID).
3. The device will automatically connect to WiFi after returning to the APP.



Note: You can find the corresponding ID on the device body tag which is for the hotspot's name.

iOS

1. Enter your WiFi password. (If you want to connect to other WiFi, please connect your mobile phone to the WiFi you need and then return to the APP to refresh).
2. Select "Connect AP hotspot" button and connect to the device hotspot(MV+ID).
3. The device will automatically connect to WiFi after returning to the APP.



FAQ

Q : The camera can't connect to WiFi.

A :

- 1.The wrong password is a common cause of connection failure. Please confirm whether the password entered is correct.
- 2.Please confirm that the connected WiFi is 2.4GHz.If you use a 2.4GHz-5GHz dual-band router, please select 2.4GHz WiFi.
- 3.The WiFi name should not contain special symbols and should not be hidden. The restrictions such as AP isolation and WiFi squatter prevention of the router cannot be opened.

Q : There is a prompt "Device offline" in the device list.

A :

- 1.Please restart the camera and confirm that the camera can start normally and connect to WiFi.
- 2.Please turn off the router functions of the firewall, blacklist, WiFi squatter prevention, MAC address binding, etc.To support remote preview, which requires the router to connctet to WAN.
- 3.If the router is replaced or the WiFi password is changed, please reset the camera and reconfigure the network.

Attentions

- The camera only supports 2.4GHz WiFi. Please confirm that the WiFi connected by the mobile phone is 2.4GHz before network configuration.
- Concerning Micro SD card recording, when the recording volume reaches the upper limit, the earliest recording file of the recording event will be automatically overwritten.
- Long-term use in the unconventional environment(high temperture, high humidity, the large amount of dust or smoke,etc.)may damage the camera.
- V380 Pro APP and device firmware will be updated from time to time. For your best experience, please update the APP and upgrade the device firmware in time.

FCC Warning:

This equipment has been tested and found to comply with the limits for a Class B digital device, pursuant to part 15 of the FCC Rules. These limits are designed to provide reasonable protection against harmful interference in a residential installation. This equipment generates, uses and can radiate radio frequency energy and, if not installed and used in accordance with the instructions, may cause harmful interference to radio communications. However, there is no guarantee that interference will not occur in a particular installation. If this equipment does cause harmful interference to radio or television reception, which can be determined by turning the equipment off and on, the user is encouraged to try to correct the interference by one or more of the following measures:

- Reorient or relocate the receiving antenna.
- Increase the separation between the equipment and receiver.
- Connect the equipment into an outlet on a circuit different from that to which the receiver is connected.
- Consult the dealer or an experienced radio/TV technician for help.

Caution: Any changes or modifications to this device not explicitly approved by manufacturer could void your authority to operate this equipment.

This device complies with part 15 of the FCC Rules. Operation is subject to the following two conditions:

(1) This device may not cause harmful interference, and (2) this device must accept any interference received, including interference that may cause undesired operation.

This equipment complies with FCC radiation exposure limits set forth for an uncontrolled environment. This equipment should be installed and operated with minimum distance 20cm between the radiator and your body.