

Appendix A

System Check 750 MHz Head
System Check 835 MHz Head
System Check 1750 MHz Head
System Check 1950 MHz Head

Summary

Dipole	Frequency [MHz]	TSL	Power [dBm]	Dev. 1g [%]	Dev. 10g [%]	Dev. Peak [%]	Iso. Error [%]
D750V3 – SN1231	750.0	HSL	20.0	0.1	1.1	14.0	5.0

Exposure Conditions

Phantom Section, TSL	Test Distance [mm]	Band	Group, UID	Frequency [MHz], Channel Number	Conversion Factor	TSL Conductivity [S/m]	TSL Permittivity
Flat, Head Simulating Liquid	15	CW, 0--	750.000, 0		9.42	0.892	42.4

Hardware Setup

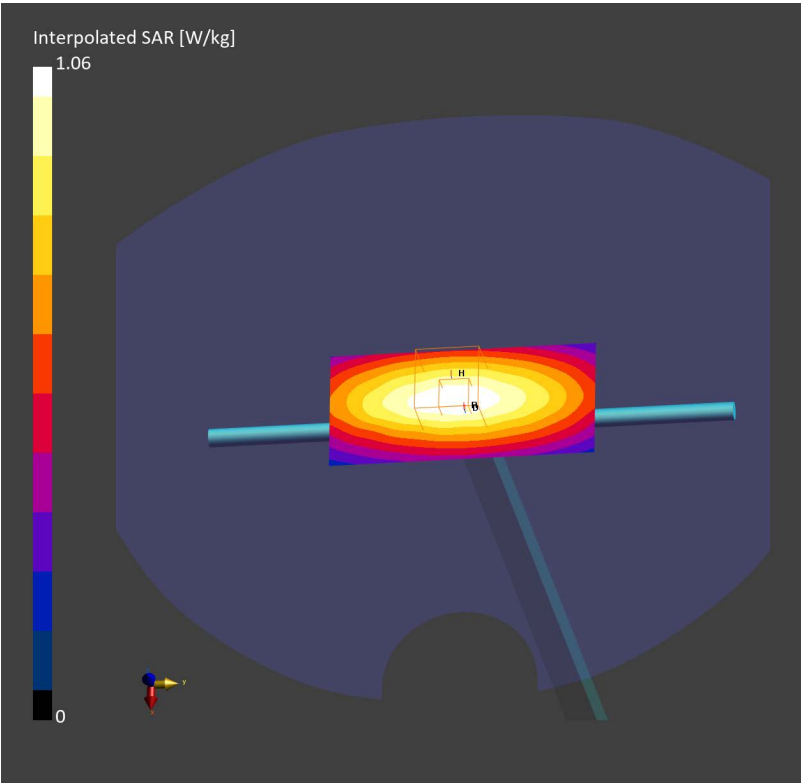
Phantom	TSL	Probe, Calibration Date	DAE, Calibration Date
Twin-SAM V8.0 (30deg probe tilt) – 2168	HSL750	EX3DV4 – SN7758, 2024-09-12	DAE4ip Sn1846, 2024-12-10

Scans Setup

	Area Scan	Zoom Scan
Grid Extents [mm]	40.0 x 90.0	32.0 x 32.0 x 30.0
Grid Steps [mm]	10.0 x 15.0	6.0 x 6.0 x 1.5
Sensor Surface [mm]	3.0	1.4
Graded Grid	N/A	Yes
Grading Ratio	N/A	1.5
MAIA	N/A	N/A
Surface Detection	VMS + 6p	VMS + 6p
Scan Method	Measured	Measured

Measurement Results

	Area Scan	Zoom Scan
Date	2025-08-13, 09:31	2025-08-13, 09:39
psSAR1g [W/Kg]	0.922	0.865
psSAR10g [W/Kg]	0.613	0.572
Power Drift [dB]	-0.01	-0.04
Power Scaling	Disabled	Disabled
Scaling Factor [dB]		
TSL Correction	No correction	No correction



Summary

Dipole	Frequency [MHz]	TSL	Power [dBm]	Dev. 1g [%]	Dev. 10g [%]	Dev. Peak [%]	Iso. Error [%]
D835V2 – SN4d302	835.0	HSL	20.0	2.8	3.2	22.4	1.5

Exposure Conditions

Phantom Section, TSL	Test Distance [mm]	Band	Group, UID	Frequency [MHz], Channel Number	Conversion Factor	TSL Conductivity [S/m]	TSL Permittivity
Flat, Head Simulating Liquid	15	CW, 0--		835.000, 0	9.84	0.930	43.1

Hardware Setup

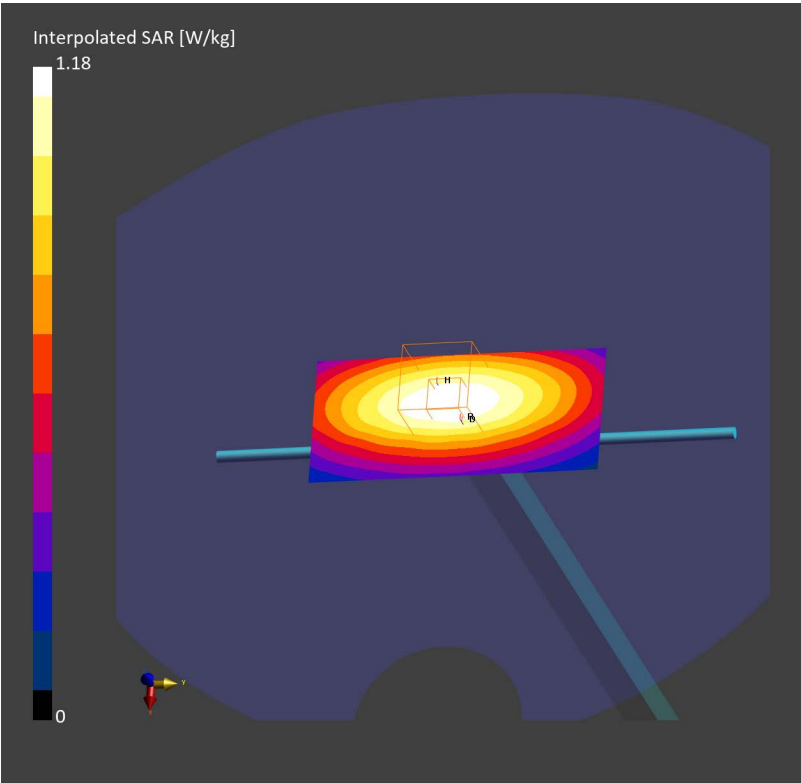
Phantom	TSL	Probe, Calibration Date	DAE, Calibration Date
Twin-SAM V8.0 (30deg probe tilt) – 2168	HSL835	EX3DV4 – SN3624, 2025-01-15	DAE4ip Sn1846, 2024-12-10

Scans Setup

	Area Scan	Zoom Scan
Grid Extents [mm]	40.0 x 90.0	32.0 x 32.0 x 30.0
Grid Steps [mm]	10.0 x 15.0	6.0 x 6.0 x 1.5
Sensor Surface [mm]	3.0	1.4
Graded Grid	N/A	Yes
Grading Ratio	N/A	1.5
MAIA	N/A	N/A
Surface Detection	VMS + 6p	VMS + 6p
Scan Method	Measured	Measured

Measurement Results

	Area Scan	Zoom Scan
Date	2025-08-14, 09:28	2025-08-14, 09:35
psSAR1g [W/Kg]	1.03	1.01
psSAR10g [W/Kg]	0.684	0.662
Power Drift [dB]	-0.08	-0.05
Power Scaling	Disabled	Disabled
Scaling Factor [dB]		
TSL Correction	No correction	No correction



Summary

Dipole	Frequency [MHz]	TSL	Power [dBm]	Dev. 1g [%]	Dev. 10g [%]	Dev. Peak [%]	Iso. Error [%]
D1750V2 – SN1115	1750.0	HSL	20.0	1.5	3.2	9.9	1.9

Exposure Conditions

Phantom Section, TSL	Test Distance [mm]	Band	Group, UID	Frequency [MHz], Channel Number	Conversion Factor	TSL Conductivity [S/m]	TSL Permittivity
Flat, Head Simulating Liquid	10		CW, 0--	1750.000, 0	8.54	1.36	39.7

Hardware Setup

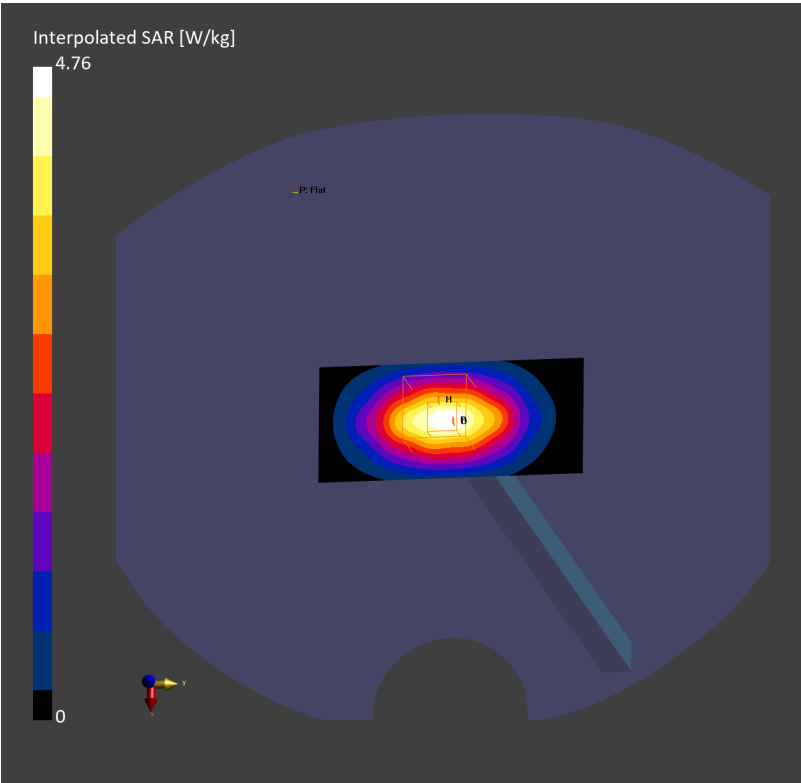
Phantom	TSL	Probe, Calibration Date	DAE, Calibration Date
Twin-SAM V8.0 (30deg probe tilt) – 2168	HSL1750	EX3DV4 – SN3624, 2025-01-15	DAE4ip Sn1846, 2024-12-10

Scans Setup

	Area Scan	Zoom Scan
Grid Extents [mm]	40.0 x 90.0	32.0 x 32.0 x 30.0
Grid Steps [mm]	10.0 x 15.0	6.0 x 6.0 x 1.5
Sensor Surface [mm]	3.0	1.4
Graded Grid	N/A	Yes
Grading Ratio	N/A	1.5
MAIA	N/A	N/A
Surface Detection	VMS + 6p	VMS + 6p
Scan Method	Measured	Measured

Measurement Results

	Area Scan	Zoom Scan
Date	2025-08-15, 08:48	2025-08-15, 08:55
psSAR1g [W/Kg]	3.82	3.74
psSAR10g [W/Kg]	2.04	2.01
Power Drift [dB]	-0.11	-0.08
Power Scaling	Disabled	Disabled
Scaling Factor [dB]		
TSL Correction	No correction	No correction



Summary

Dipole	Frequency [MHz]	TSL	Power [dBm]	Dev. 1g [%]	Dev. 10g [%]	Dev. Peak [%]	Iso. Error [%]
D1950V3 – SN1266	1950.0	HSL	20.0	1.2	1.6	10.9	–1.9

Exposure Conditions

Phantom Section, TSL	Test Distance [mm]	Band	Group, UID	Frequency [MHz], Channel Number	Conversion Factor	TSL Conductivity [S/m]	TSL Permittivity
Flat, Head Simulating Liquid	10	CW, 0--		1950.000, 0	8.21	1.37	40.5

Hardware Setup

Phantom	TSL	Probe, Calibration Date	DAE, Calibration Date
Twin-SAM V8.0 (30deg probe tilt) – 2168	HSL1950	EX3DV4 – SN3624, 2025-01-15	DAE4ip Sn1846, 2024-12-10

Scans Setup

	Area Scan	Zoom Scan
Grid Extents [mm]	40.0 x 90.0	32.0 x 32.0 x 30.0
Grid Steps [mm]	10.0 x 15.0	6.0 x 6.0 x 1.5
Sensor Surface [mm]	3.0	1.4
Graded Grid	N/A	Yes
Grading Ratio	N/A	1.5
MAIA	N/A	N/A
Surface Detection	VMS + 6p	VMS + 6p
Scan Method	Measured	Measured

Measurement Results

	Area Scan	Zoom Scan
Date	2025-08-15, 09:35	2025-08-15, 09:41
psSAR1g [W/Kg]	4.13	4.05
psSAR10g [W/Kg]	2.12	2.09
Power Drift [dB]	–0.10	–0.05
Power Scaling	Disabled	Disabled
Scaling Factor [dB]		
TSL Correction	No correction	No correction

