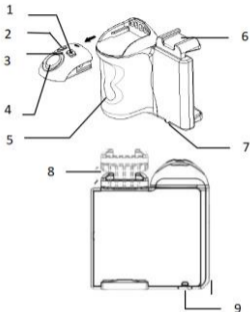


Product Overview



- 1. "+" button 2. "-" button 3. Indicator
- 4. Camera button 5. Handle 6. Cold shoe
- 7. 1/4 Thread hole 8. Phone holder
- 9. Lanyard hole

Note: Phone's width < 83mm; iOS 15 or above.

Battery

Take the remote off the main unit, open the battery cover and insert the battery.

Note: The positive side faces outward.



Bluetooth Pairing

1. Long press camera button for 3 seconds to turn it on (Indicator flashes green).

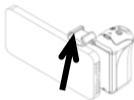
Note: When the remote is on, long press for 3 seconds to turn it off.

2. Enable phone Bluetooth and search devices nearby.

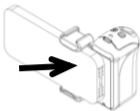
3. Select "BK-CH3A" to connect/pair, and the indicator will go out after successful connection (at this time, the indicator will flash once when camera button is pressed).

Note: If the remote is not paired or connected in 120 seconds, it will automatically shut down.

Phone Holder



1. Tilt phone into the holder and push it upwards.



2. Push phone inward into the holder.

How to Use

1. **Android/HarmonyOS:** No any settings needed, use it after Bluetooth connection.

- 1) Click camera button: take a photo;
- 2) Double click camera button: switch front/back lenses;
- 3) Long press "+" button: zoom in;
- 4) Long press "-" button: zoom out.

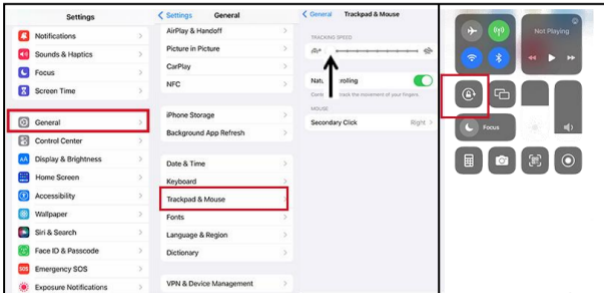
2. **iPhone:** Do the following settings after Bluetooth connection:

- 1) Adjust "Trackpad & Mouse";
- 2) Enable "Portrait Orientation Lock";
- 3) Enable "AssistiveTouch".

iPhone Settings (Keep Bluetooth Connection)

1) Adjust "Trackpad & Mouse"

2) Enable "Portrait Orientation Lock"



1.Settings-General

2.Trackpad&Mouse

3.Set Tracking speed

3) Enable "AssistiveTouch": Settings→Accessibility→Touch→Enable AssistiveTouch
→Adjust "Tracking Sensitivity".



1. Settings-Accessibility
2. Choose Touch
3. Enable AssistiveTouch
4. Minimize Tracking Sensitivity

Operations for iPhone



SLOMO VIDEO PHOTO PORTRAIT PAN

img 1



SLOMO VIDEO PHOTO PORTRAIT PAN

img 2

1. In PHOTO/VIDEO mode as img 1, click "+" or "-" button to call out the zoom dial as img 2, then long press "+" or "-" button to zoom in/out.
2. During video recording, double click "+" or "-" button to call out the zoom dial, then long press "+" or "-" button to zoom in/out.
3. Click camera button: take a photo in PHOTO mode; start/pause in VIDEO mode.
4. Double click the camera button to switch between the front and back lenses.

Mode Switch

Press and hold "+" and "-" buttons at the same time for 3 seconds to switch the green/red light mode, so as to optimize the zoom (for function upgrade).

Specifications

Bluetooth name	BK-CH3A
Battery	CR2032
Control range	10m
Product size	70*76.5*45mm
Phone width	55-83mm

FAQ

Q: Can't zoom with Android/HarmonyOS?

A: Press "+" and "-" buttons at the same time for 3 seconds to switch to red light mode.

Q: Can't take photos/switch lenses in green light mode with Android/HarmonyOS?

A: Press and hold "-" button, then press camera button to adjust the position until you can take photos.

Q: Can't zoom with iPhone?

A: iOS 15 or above;

FCC Warning:

This equipment has been tested and found to comply with the limits for a Class B digital device, pursuant to part 15 of the FCC Rules. These limits are designed to provide reasonable protection against harmful interference in a residential installation. This equipment generates, uses and can radiate radio frequency energy and, if not installed and used in accordance with the instructions, may cause harmful interference to radio communications. However, there is no guarantee that interference will not occur in a particular installation. If this equipment does cause harmful interference to radio or television reception, which can be determined by turning the equipment off and on, the user is encouraged to try to correct the interference by one or more of the following measures:

- Reorient or relocate the receiving antenna.
- Increase the separation between the equipment and receiver.
- Connect the equipment into an outlet on a circuit different from that to which the receiver is connected.
- Consult the dealer or an experienced radio/TV technician for help.

Caution: Any changes or modifications to this device not explicitly approved by manufacturer could void your authority to operate this equipment.

This device complies with part 15 of the FCC Rules. Operation is subject to the following two conditions:

(1) This device may not cause harmful interference, and (2) this device must accept any interference received, including interference that may cause undesired operation.

This equipment complies with FCC radiation exposure limits set forth for an uncontrolled environment. This equipment should be installed and operated with minimum distance 0cm between the radiator and your body.