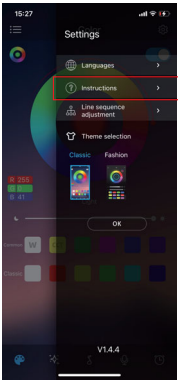


APP Instructions:
Enter the mobile APP interface and open the upper right corner Settings to view Guide.You'll have all the instructions here.The following figure:



9

Part5: The APP have two types of theme UI
1.The classic mode as follows:



APP Link Description

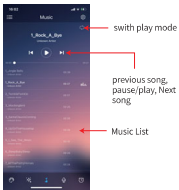


10

Light mode
12 lighting modes:
1-Flash7\ 2-Flash3\ 3-Breath G\ 4-Strobe G\ 5-Fade7
6-Fade3\ 7-Breath R\ 8-Strobe R\ 9-Breath7\ 10-Breath3
11-Breath B\ 12-Strobe B



Music Mode



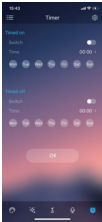
11

Music rhythm through cell phone microphone
Four types of rhythms:
1-Classic, 2-Soft, 3-Dynamic, 4-Disco



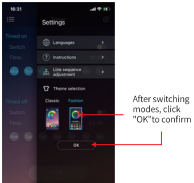
Time Setting

Time on/Time off\ Monday to Sunday\ 0:00 to 23:59



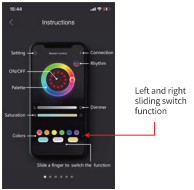
12

2.The Fashion mode as follows:



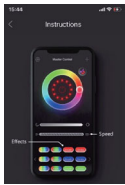
Button Description

Color: 9 color variations
Rhythm: Music Mode
Dimmer: Brightness Control
Saturation: Chromaticity saturation

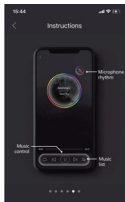


13

12 Lighting Modes/Speed adjustment /Brightness adjustment



Music Mode



14

Music rhythm through cell phone microphone
Rhythms Mode:
1-Classic\ 2-Soft\ 3-Dynamic\ 4-Disco
Adjust Microphone sensitivity
Mobile microphone/Device microphone



Part6: WideUsage

Submersible LED light works well in both wet and dry places, such as swimming pool, bathtub, pond, boat, fountain, aquarium, vase-base, fish tank, flower pot, garden, waterfall, and hallway, bar, garage, stage, show case, ideal for party, birthday events, holiday, festival decoration, like Wedding, Carnival, Halloween, Christmas, Birthday, party, etc.

Part7: Warranty and Service

(1) Warranty: 30 days free return and quickly unconditional refund, 2 years free replacement for product quality issue (NOT MAN MADE).
(2) Service: Lifetime prompt customer service. Any questions, please don't hesitate to reach out, we will reply to you within 24 hours, and give you 100% satisfying solutions.

15

Rechargeable
Submersible
LED Pool Lights

Wireless BT | APP Control

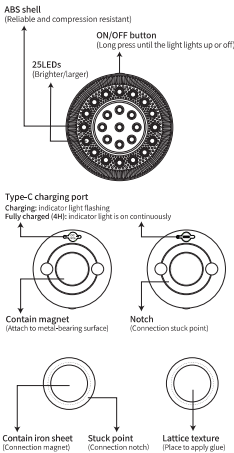
FC

CE

RoHS

REACH

Part 1: Product Display



1

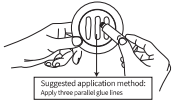
Part 2: Pool lights instructions for using glue

⚠ The signal light receiver cannot be placed underwater as it can cause signal loss.

1. Choose a smooth and flat surface, wipe off dirt, dust. Spread the glue EVENLY on the grid (Paste more firmly)

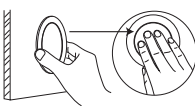


2. Apply a quarter (1/4 glue) from the glue pipe to the plate (the side with lattice texture), Apply three strips of parallel glue.



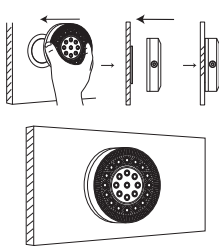
Suggested application method:
Apply three parallel glue lines.

3. Glue the plate to the surface, Press hard for 120s.
4. Press hard for at least 120 seconds, then wait at least 12 hour, the glue solidifies and it's not easy to move the plate (The glue cures completely after 24 hours)



2

5. Aim the light on the plate and stick it to the plate

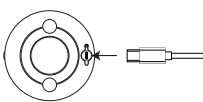


Part 3: Component Supplement

1. Charging port

⚠ Note:

- Please keep the charging port clean and dry.
- Be sure that the waterproof silicone cover is closed before putting the pool light in the water.



3

2. Magnet

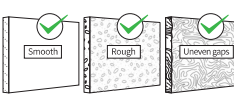
There are four magnets in the center of the bottom of the light, which can be attached to the metal surface.

- ① Clean the surface before attaching
- ② Attach magnet



3. Plastic plate

Plastic plate (containing iron sheet) can be used for walls or floors with smooth/rough/uneven gaps, etc. Glue can work on the swimming pool wall with water without drainage.



4. Glue

⚠ Tips:

- After opening, please use it as soon as possible.
- Not edible. Please stay away from food and children.
- At water temperatures of 78-83 ° F, glue cures for at least 2 hour.
- When stored unopened below 77 ° F, the shelf life of the product is 2 years.

4

- The plate coated with glue is exposed to the air: If the glue has not yet solidified, it can be used with new glue;

If the glue has solidified, it cannot be used and needs to be cleaned with a spatula. (Cured glue is easily removed with a spatula, even glue that has been cured for a long time is easy to clean)

Preventive treatment:

Glue is environmentally friendly, insoluble in water, and has RoHS certification. When used under prescribed safety measures, it is usually harmless. However, some people with skin allergies may be affected, so we recommend that they wear impermeable rubber gloves or plastic gloves and protective glasses when using glue. After use, wash the skin thoroughly with soap and warm water, avoiding solvents. Dry your skin with disposable paper towels instead of towel.

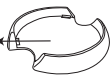
Signal light receiver

- ⚠ The signal light receiver cannot be placed underwater as it can cause signal loss.



Signal light receiver

Signal light receiver base

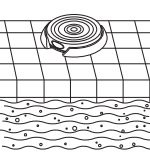


5

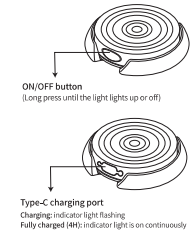
Please refer to the instructions for using the adhesive on the base of the swimming pool light (Please do not stick the Signal light receiver base underwater)



Suggested installation scenarios for signal receivers:
Swimming pool shore



6



ON/OFF button
(Long press until the light lights up or off)

Type-C charging port
Charging: indicator light flashing
Fully charged (4H): indicator light is on continuously

Charging indicator instructions:

- (1) Low battery: flashing red light
Fully charged: green light on
- (2) Signal receiver working: green light on
- (3) Turn off the lights on the mobile app: After 10 minutes, the signal receiver and pool lights will turn off.

The Package Include:

- 1 to 4 waterproof pool lights
- 1 to 4 sticky plates
- 1 Signal light receiver
- 1 to 2 bottle of underwater installation glue(Supports the installation of 5 lights)
- 1 to 2 USB-C Charging Cable (2 USB-C Charging Cable in 4 Packs)
- 1 instruction manual

7

Part4: Instructions for use of led controller

ios and android systems can download the APP by scanning the QR code.open the browser or other tools with "scan QR code" Function,scan the QR codes below:

Use your phone to scan the QR code



App Installation steps

Click iStrip+ on the App icon-enter the app page. After entering the App interface,if Bluetooth is not enabled,an application wants to enable the Bluetooth function of this device click allow



8

FCC Statement

This equipment has been tested and found to comply with the limits for a Class B digital device, pursuant to Part 15 of the FCC Rules.

These limits are designed to provide reasonable protection against harmful interference in a residential installation. This equipment generates uses and can radiate radio frequency energy and, if not installed and used in accordance with the instructions, may cause harmful interference to radio communications. However, there is no guarantee that interference will not occur in a particular installation. If this equipment does cause harmful interference to radio or television reception, which can be determined by turning the equipment off and on, the user is encouraged to try to correct the interference by one or more of the following measures:

- Reorient or relocate the receiving antenna.
- Increase the separation between the equipment and receiver.
- Connect the equipment into an outlet on a circuit different from that to which the receiver is connected.
- Consult the dealer or an experienced radio/TV technician for help.

This device complies with part 15 of the FCC Rules. Operation is subject to the following two conditions: (1) This device may not cause harmful interference, and (2) this device must accept any interference received, including interference that may cause undesired operation.

Any Changes or modifications not expressly approved by the party responsible for compliance could void the user's authority to operate the equipment.

This equipment complies with FCC radiation exposure limits set forth for an uncontrolled environment. This equipment should be installed and operated with minimum distance 20cm between the radiator & your body.