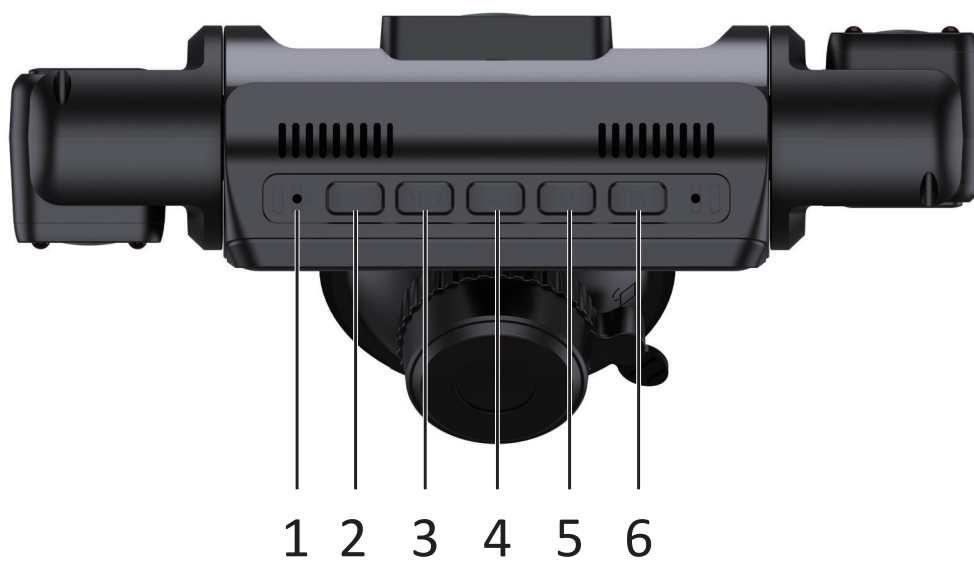
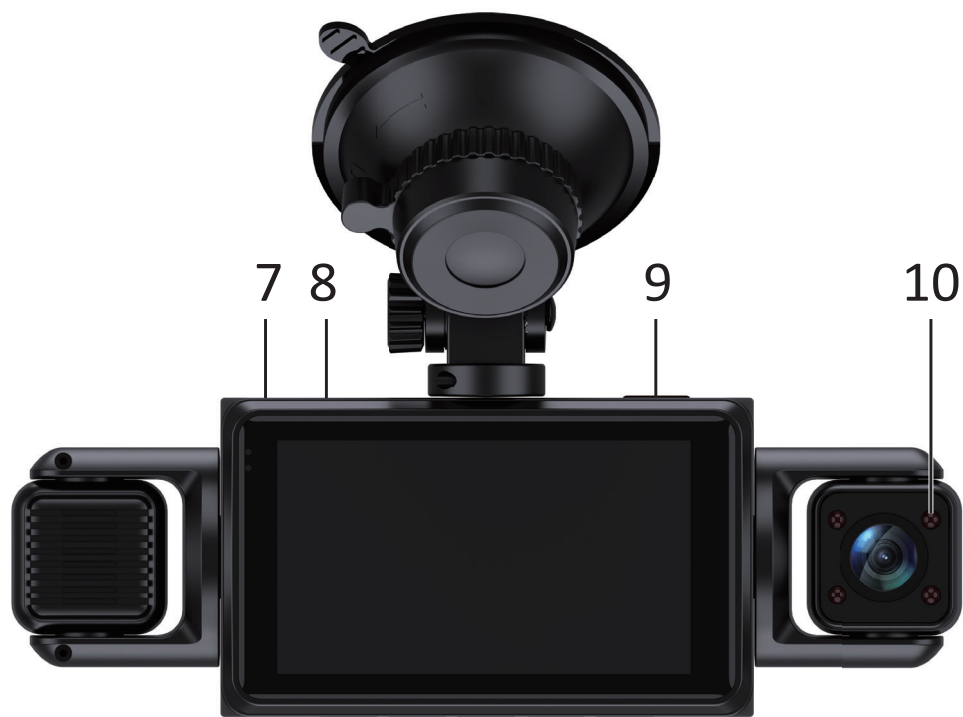


# USER MANUAL

## WIFI Version



# Dashcam buttons



①	<b>Reset hole</b>	Reset the Dashcam.
②	<b>Power button</b>	The camera: Long-press Power button for -3s to turn ON/OFF.
③	<b>OK button</b>	1. Recording: short-press once to start/stop video recording.
		2. Short-press once to play/pause current video in playback mode.
		3. Short-press once to enter/save the setting in menu setting.
④	<b>Up button</b>	1. Short-press once to scroll up in menu setting.
		2. Short-press once to switch the display windows of the front camera, rear camera, and left/right camera.
		3. Short-press once to scroll to previous video files in playback mode.
⑤	<b>Down button</b>	1. Short-press once to scroll down in menu setting.
		2. Short-press once to mute audio recording in video Mode.
		3. Short-press once to scroll to next video files in Playback Mode.
⑥	<b>Menu/Mode</b>	1. Enter Menu Settings: Long-press Menu button once in non-recording status.
		2. Exit the Menu Setting: Short-press on Menu button in Menu status.
		3. Enter Video Playback Mode: Short-press button once in non-recording status.
⑦	<b>Power slot (USB-C)</b>	Connect a USB cable or car charger.
⑧	<b>Rear camera port</b>	Connect a rear camera.
⑨	<b>TF Card slot</b>	Insert a micro-SD card, record and save videos.
⑩	<b>Fill light</b>	Fill lights for the right&left cameras, which turn on automatically when the brightness is very low.

# Playback the videos

## Method 1: Playback on the PC.

Take out the SD card and read it in the Pc. Then playback the videos on the PC

## Method 2: Playback it on the DashCam

1. Stop recording;
2. Short-press on the **MENU** button you will reach the Playback Mode;



**Playback Mode interface**

Using **UP** and **DOWN** button to scrop up and down to choose files to play. Long Press on **MENU** button to delete/Protect current fles.

3. Short Press **MENU** under playback Mode to exit.

# Connecting WIFI

## ***Step 1. App Download and Installation***

- 1.1 Scan the QR code to download the app.
- 1.2 Install the app and launch it. Select "Viidure" from the menu, as shown below (refer to the app interface in the accompanying visuals).



**IOS**



**Android**

## ***Step 2. Adding the Device***

### **For iPhone:**

- Go to the system Wi-Fi settings.
- Select the camera's Wi-Fi network.
- Enter the default Wi-Fi password: 12345678.
- Once connected, open the "Viidure" app and complete the device addition.

### **For Android:**

- Open the "Viidure" app.
- Tap "Add Camera" and follow the on-screen guide.
- In the system Wi-Fi settings, select the camera's Wi-Fi network and enter the default password: 12345678.
- After connecting, return to the app to complete the device setup.

## ***Step 3. App Interface Overview***

### **3.1. Camera:**

- Manage your Dashcam.
- Add, view, or delete devices.
- Enter the video preview mode.

### **3.2. Photo Album:**

- Access and manage pictures or videos downloaded from the Dashcam.

### **3.3. More:**

- Adjust app settings such as language preferences.
- Provide feedback or access additional information about the app.

## ***Step 4. Dashcam Functions***

### **4.1. Taking Photos:**

Control the Dashcam to capture photos, which are saved directly to the device.

### **4.2. Video Playback and Full Screen:**

Switch between full-screen video and a zoomed-out view.

### **4.3. Camera Files:**

Access the Dashcam's file list, organized into categories:

- Loop Recordings
- Photo Files
- Emergency Events
- Parking Monitoring

### **4.4. Camera Settings:**

Adjust settings like recording resolution and microphone controls.

## ***Step 5. Downloading and Playing Files***

File Download:

- Navigate to **Camera Files** in the app.
- Select desired photos or videos.
- Tap **Download** to save them to your phone, where they can be viewed in the **Photo Album**.

## ***Step 6. Managing Photo Albums***

Access the Photo Album to organize and manage downloaded media:

- Files are arranged by date.
- Use the **Select** option to perform batch operations.
- Categories include **Videos**, **Pictures**, and **Emergency Documents**.

## ***Step 7. Video Playback Options***

Browse videos at varying speeds, from slow motion (e.g., 1 frame per second) to fast-forward (e.g., 10x speed).

## ***Step 8. Document Editing***

Use the app's editing features to enhance your media:

- **Images:** Crop, apply filters, and beautify.
- **Videos:** Clip segments, add music, and perform other customization.

# Install the front camera

**Step 1.** Clean the windshield glass. Make sure to clean your windshield from the dust particles and evaporated grease from the dashboard surface. Then insert the suction bracket.



**Step 2.** Please insert the suction bracket and make sure to move the film in the suction cup.





**Step 3.** Attach the Dashcam with the suction mount. Adjust the camera lens to pointing forward to the center when installing it.

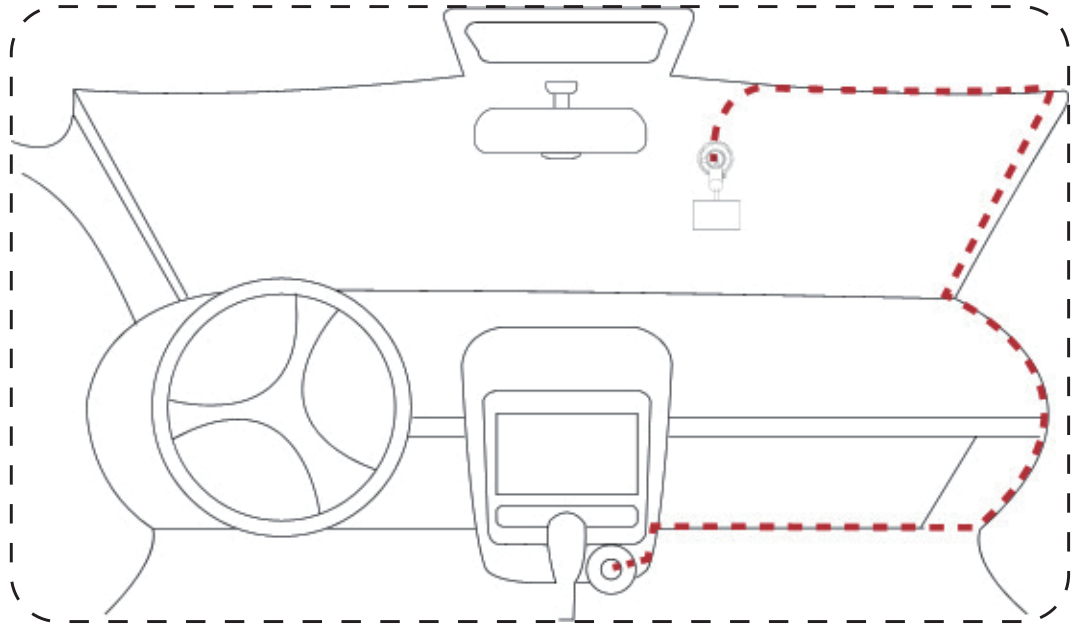
## Important notes

1. Please make sure the installation position is cleaned correctly.
2. Please make sure the suction of the film is removed and the suction of the cup is clean.
3. Please make sure the suction of the bracket is locked tightly. If not, the suction of the bracket will easily drop during video recording

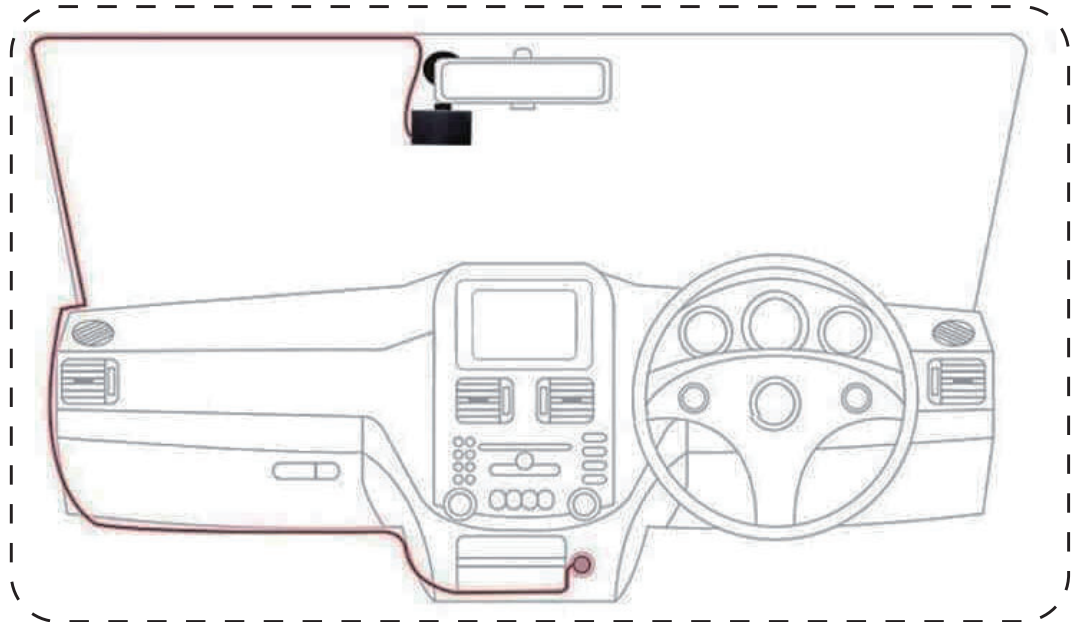
# Installation car charger

Connect the car charger to camera's USB port and Wire the cable according to the overall wiring diagram below.

## Wiring method A:



## Wiring method B:



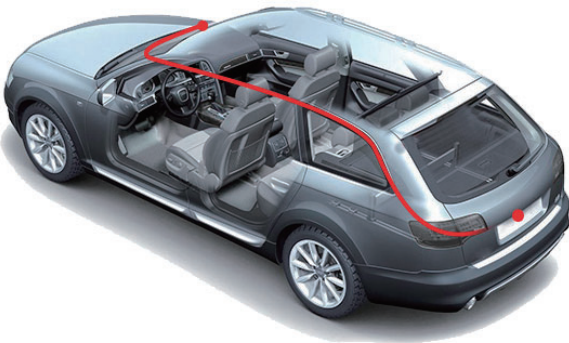
## Please note:

Please use the original car charger provided to avoid fault or incompatibility.

# Install the rear camera



**a.** Insert the rear cam into dashcam body completely as photo.



Wiring Method A

**or**



Wiring Method B

**b.** Install the rear camera's cable according the diagram photo above.

## Install the rear camera's cable



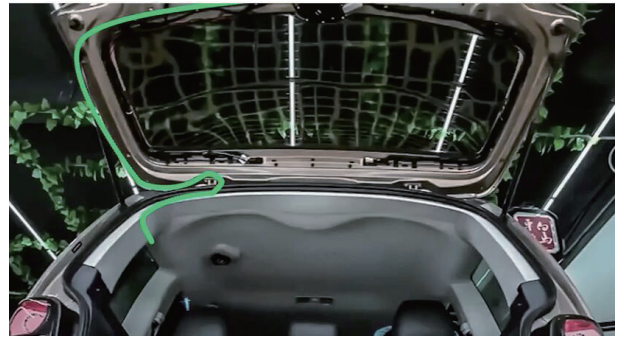
**a.** Hide the cable into to the top panel as the photo.



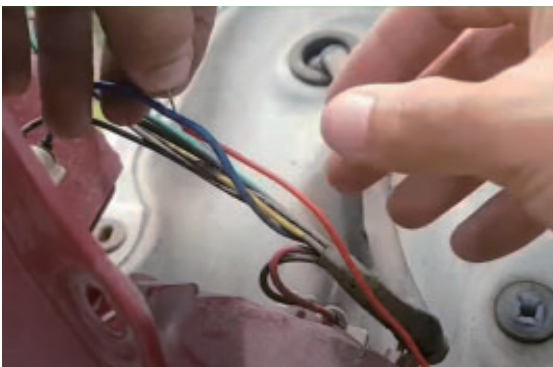
**b.** Slightly loosen the side panel and insert the cable carefully, especially if airbags are present.



**c.** Insert the cable along the door's rubber seal, continuing until you reach the trunk area.



**d.** Loosen the trunk's panel and route the cable as per the red diagram.



**e.** Connect the rear camera's red cable to the positive pole of the reversing light.

- This connection allows the reversing image to display automatically when the car is in reverse.

- If you don't need this feature, skip this step.



**f.** Attacch the 3M sticky tape to the rear camera's bracket and adjust the angle.



**g.** Secure the rear camera in the middle and above the license plate frame.



**h.** Connect the rear camera to the wired cable. Align the two arrows for a proper connection.

### Important notes

Ensure all connections are secure for optimal functionality.

## FCC WARNING

This device complies with part 15 of the FCC Rules. Operation is subject to the following two conditions: (1) this device may not cause harmful interference, and (2) this device must accept any interference received, including interference that may cause undesired operation.

Any changes or modifications not expressly approved by the party responsible for compliance could void the user's authority to operate the equipment.

NOTE: This equipment has been tested and found to comply with the limits for a Class B digital device, pursuant to Part 15 of the FCC Rules. These limits are designed to provide reasonable protection against harmful interference in a residential installation. This equipment generates, uses and can radiate radio frequency energy and, if not installed and used in accordance with the instructions, may cause harmful interference to radio communications.

However, there is no guarantee that interference will not occur in a particular installation. If this equipment does cause harmful interference to radio or television reception,

which can be determined by turning the equipment off and on, the user is encouraged to try to correct the interference by one or more of the following measures:

- Reorient or relocate the receiving antenna.
- Increase the separation between the equipment and receiver.
- Connect the equipment into an outlet on a circuit different from that to which the receiver is connected.
- Consult the dealer or an experienced radio/TV technician for help.

To maintain compliance with FCC's RF Exposure guidelines, This equipment should be installed and operated with minimum 20cm distance between the radiator and your body: Use only the supplied antenna.