

SUPER CONSOLE X8

User Manual



Model	Super Console X8	Dual System	EmuELEC & Android
CPU	Custom game chip	RAM&ROM	4G+32GB
DC Power	5V/2A	Bluetooth	BT5.0
WiFi	2.4G/5G	Language	Multi-languages

1. Product Features

- Mini size, retro design, palm size, can be put in the pocket, it's the best choice for family, travel, party, corporate entertainment.
- Equipped with KINHANK custom game chip, 4-core processor, clocked at 2.0GHz.
- Three systems in one, EmuELEC 4.7 game system + Android 13 64 bit OS.
- 4G RAM+ 32G ROM. Large memory to ensure smooth operation.
- 2.4G/5G WiFi, 100M LAN, BT5.0.
- HDMI-compatible, Android supports 4K*2K UHD output, EMUELEC supports 1080p HD output, it can be connected to display screens, projectors, TVs and other equipment, the big screen is clearer.
- Support HDR10, HLG HDR, Vivid HDR.
- Equipped with two wireless controllers, you can play with friends and family at any time.
- Open Linux source system, suitable for DIY. For the specific method of downloading the game, please refer to the instructions or consult our customer service.

How to switch systems?

Emuelec to Android system:

Power off--Pull out the game card---Power on---Android OS

Android to Emuelec system :

Power off--Insert game card---Power on---EmuELEC OS

2. Common hotkey settings

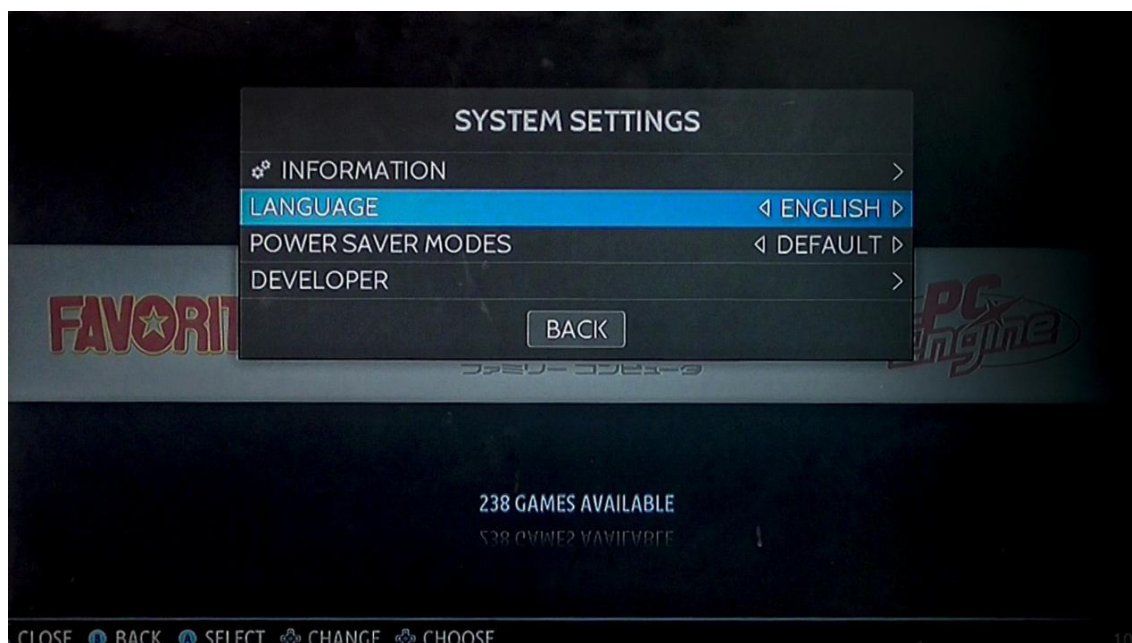
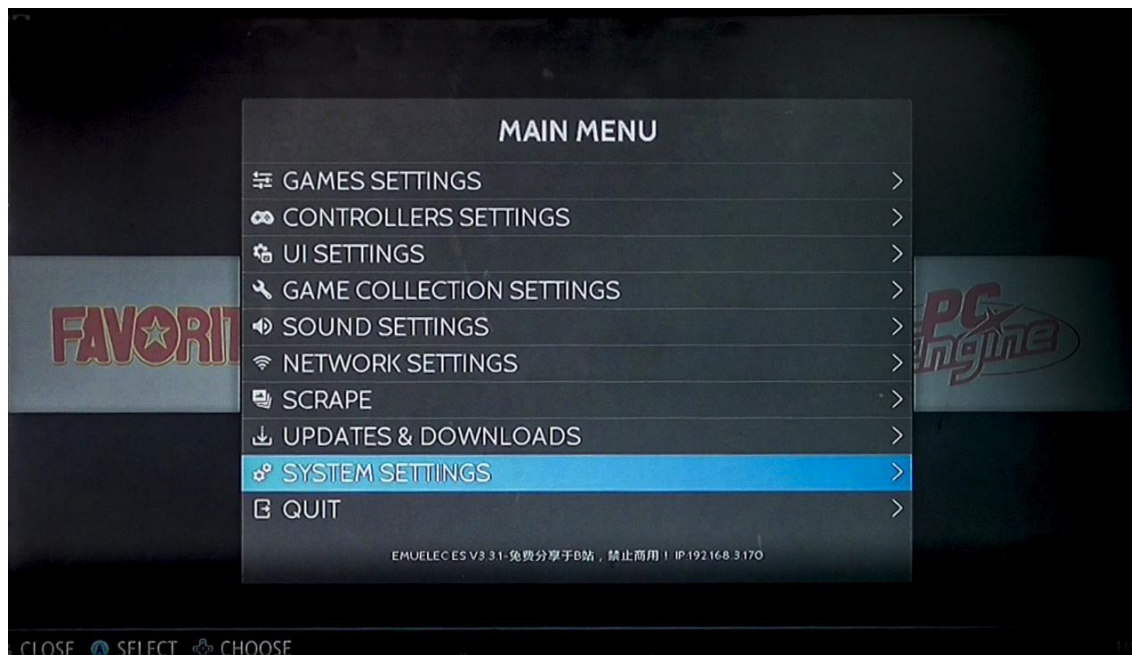
Left/right cross keys and joystick	Switch emulator platform
B key (right side function key)	Enter or confirm
A key (lower function key)	Return or cancel
START Key	Set up
SELECT Key	Soft restart or soft shutdown setting
L2/R2	Game menu page flip
Select + Start(press twice)	Quite Game (Quite game's hotkeys are available throughout the system, but most of the other hotkeys only work when using the retroarch core.)
L3 + R3	Menu Toggle Controller Combo
Select + L1	Load State
Select + R1	Save State
Select + B	Reset Game

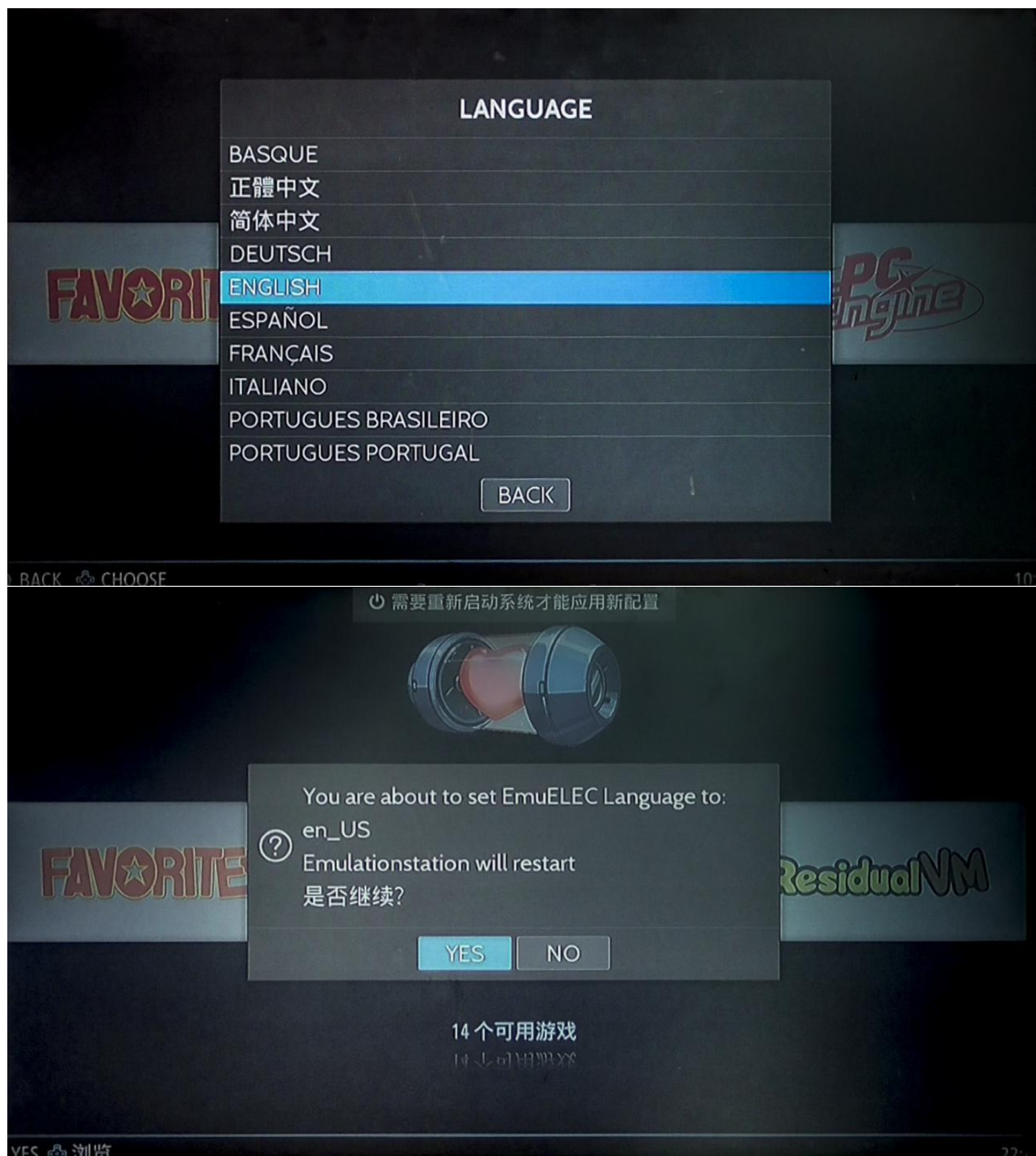
3. More Settings

(1) Language Setting

System Settings-Language

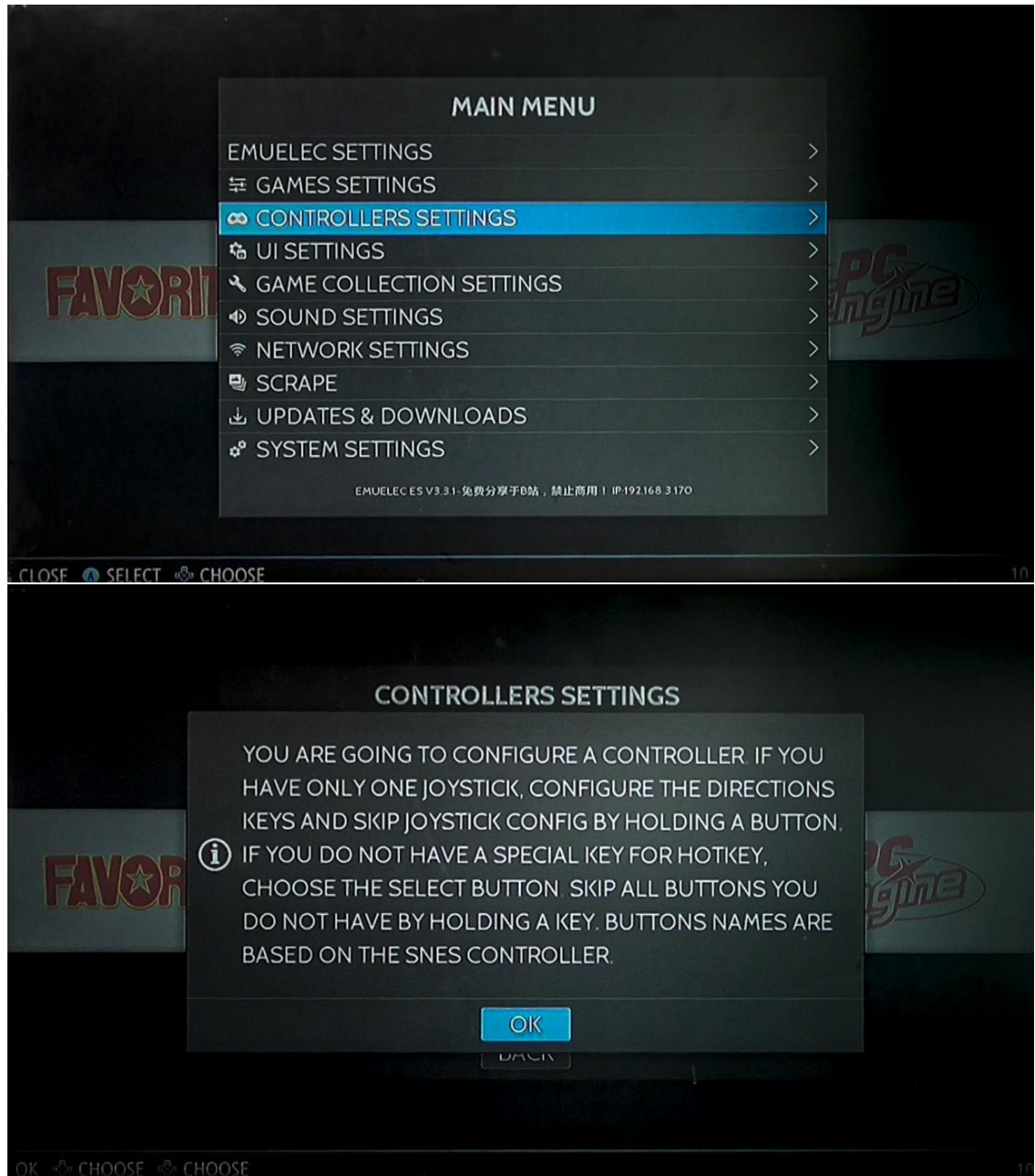
START----->>SYSTEM SETTINGS----->>LANGUAGE

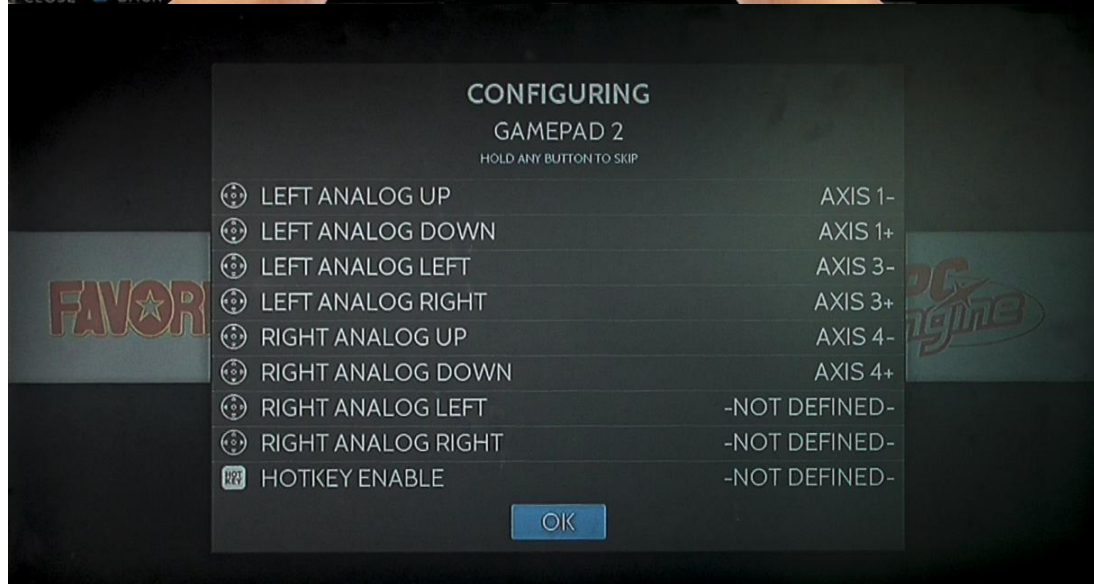




(2) Controller Button Setting

After the USB interface is connected to the handle, press the handle B (OK) button to enter the handle button setting.

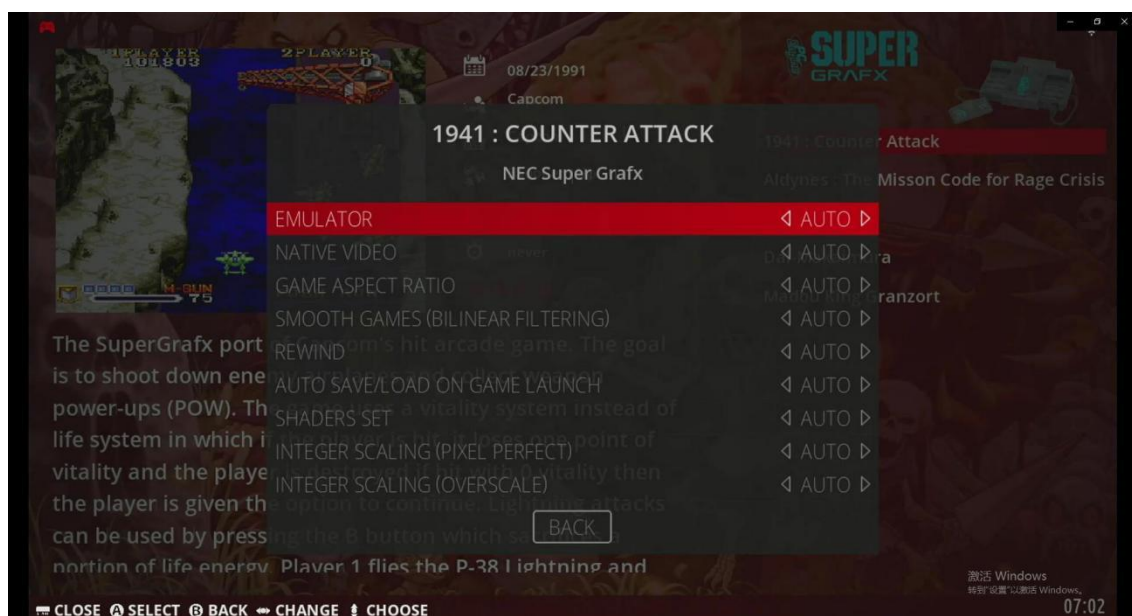
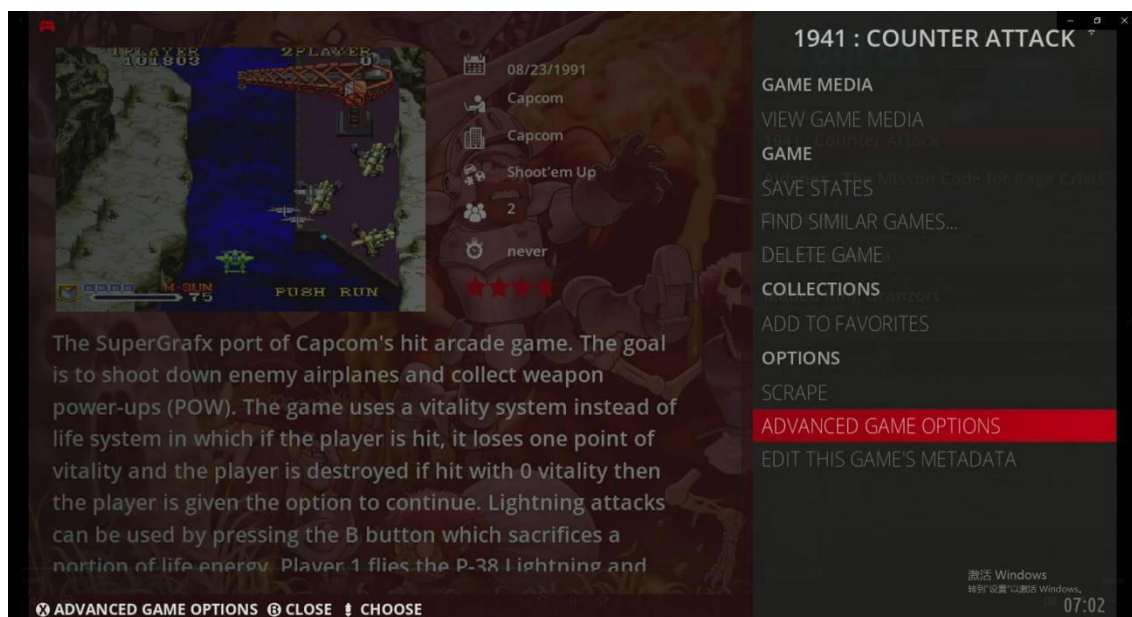


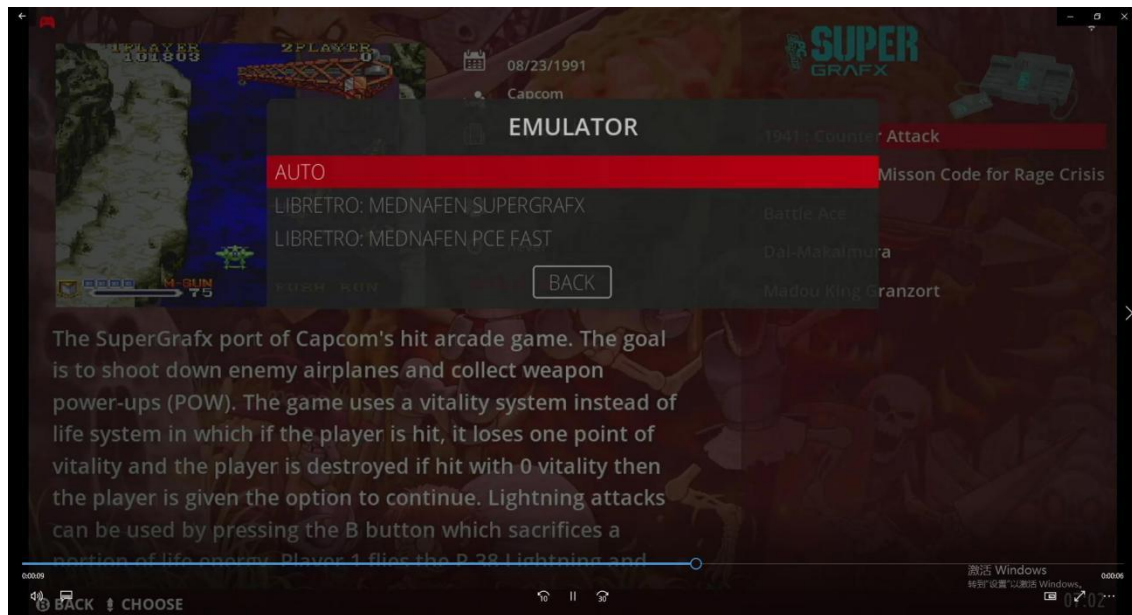


4.How to change game emulators:

We recommend that you use the default emulator core set by us. If you encounter a deadlock or cannot open the game during use, you can replace the emulator by following the steps below and try again.

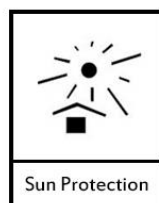
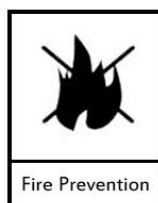
Select the game you want to change the emulator--->>Long press the B key--->>Game settings menu --->>Advanced Game Options --->> Emulator--->>Choose the right emulator





5.Precautions

- Do not store the machine in a dusty, humid, high temperature and strong magnetic environment.
- It is forbidden to use in high temperature and high humidity environment (this product is not waterproof).
- When you carry this machine out, participate in high-intensity sports such as running, climbing, etc., please fix the machine firmly on your body or backpack to avoid damage caused by falling from a height or squeezing heavy objects.
- When the power adapter is fully charged, please do not touch the power video unit with wet hands to prevent electric shock.
- Some games of this product contain violent scenes, please be careful with children before using them. Parents are also requested to do a good job of supervising their children and not to indulge for a long time.
- Do not disassemble the machine without authorization.



FCC WARNING

This device complies with part 15 of the FCC Rules. Operation is subject to the following two conditions: (1) this device may not cause harmful interference, and (2) this device must accept any interference received, including interference that may cause undesired operation.

Any changes or modifications not expressly approved by the party responsible for compliance could void the user's authority to operate the equipment.

NOTE: This equipment has been tested and found to comply with the limits for a Class B digital device, pursuant to Part 15 of the FCC Rules. These limits are designed to provide reasonable protection against harmful interference in a residential installation. This equipment generates, uses and can radiate radio frequency energy and, if not installed and used in accordance with the instructions, may cause harmful interference to radio communications. However, there is no guarantee that interference will not occur in a particular installation.

If this equipment does cause harmful interference to radio or television reception,

which can be determined by turning the equipment off and on, the user is encouraged to try to correct the interference by one or more of the following measures:

- Reorient or relocate the receiving antenna.
- Increase the separation between the equipment and receiver.
- Connect the equipment into an outlet on a circuit different from that to which the receiver is connected.
- Consult the dealer or an experienced radio/TV technician for help.

To maintain compliance with FCC's RF Exposure guidelines, This equipment should be installed and operated with minimum 20cm distance between the radiator and your body: Use only the supplied antenna.

6.PACKING LIST

1* Super Console X8

1*Game Card (built-in)

2* Controller

1*TV Remote Control

1*Power Adapter

1* HD Cable

1*User Manual

7.Tutorial Videos:

This is a huge system. If you encounter any problems, please contact us and we will provide feedback and make regular corrections based on your problems.

KINHANK E-mail:kinhank003@gmail.com

Our YouTube channel has a lots of useful tutorial videos as well, scan the QR code below to take a look.

