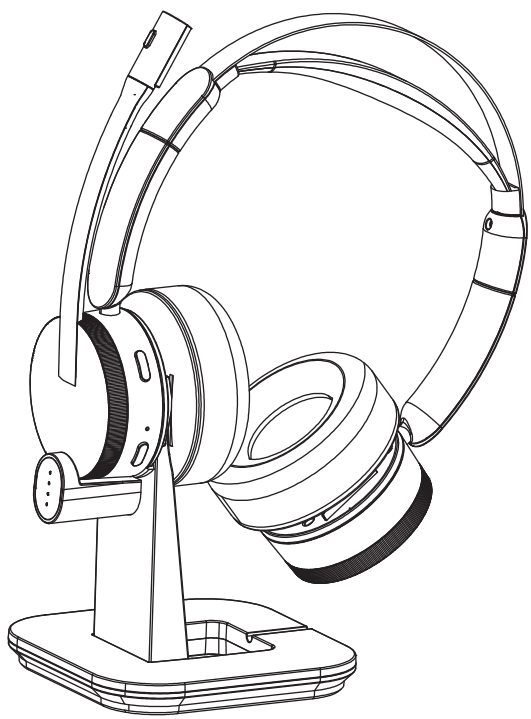


SoothieLec

Noise Canceling Bluetooth Headset

Model: KH156M



User Manual

Email: support@soothielec.com

Catalog

1. Product Overview	2
2. Basic Operation	3
3. Bluetooth Pairing and Connect with Cell Phone	3
4. Bluetooth Pairing and Connect with PC	3
5. KH156M & Computer Adapter Pairing	4
6. Connect Two Devices	5
7. How to Restore Factory Settings	6
8. Fix Microphone Issue	6
9. Charging	7
10. LED Indicator	7
11. Voice Prompt	8
12. Product Specification	8
13. Attentions and Q&A	9

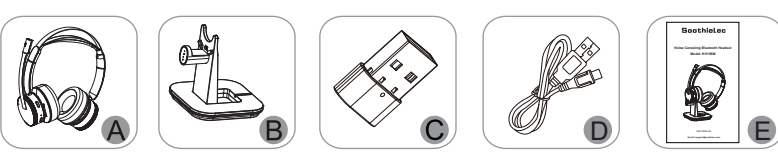
1

1.Product Overview



Packing List

- A. Bluetooth Headset KH156M x 1
B. Charging Base x 1
C. Bluetooth Dongle x 1
D. USB-C Charging Cable x 1
E. User Manual x 1



2

2.Basic Operation

Button	Function	Operation Instruction
ON/OFF	Power On	In off status, long press for 3 seconds with prompt "Power ON". KH156M will enter pairing mode automatically.
	Power Off	In on status, long press for 5 seconds with prompt "Power Off".
	Next Song	Double click ON/OFF button, while playing music.
	Previous Song	Three click ON/OFF button, while playing music.
Volume Adjust Knob	Volume Up	Rotate the knob clockwise when talking or playing music. (up to maximum, it will prompt "OK")
	Volume Down	Rotate the knob counter-clockwise when talking or playing music. (up to minimum, it will prompt "OK")
	Play/Pause	Short press when play music.
	Answer a Call	When a call comes, short press to answer.
MFB	Reject a Call	When a call comes, long press for 1 second to reject a call.
	Hang up a Call	During a call, short press to hang up.
	Hold a Call	In connected/identifying music status, double press MFB to dial the next call.
	Audio Switch	During a call, long press for 1-2 seconds to switch between Bluetooth headset and cell phone.
Mute Button	Voice Assistant	Long press MFB for 2 seconds then release.
	Mute/Unmute	During a call, short press to mute, press again to cancel mute.
MFB and ON/OFF	Delete Pairing Records	In power on status, long press about 5 seconds at same time to delete records.

3. Bluetooth Pairing and Connect with Cell Phone

- A. In off status, long press ON/OFF button for 3 seconds to power on, KH156M will enter pairing mode automatically, the LED indicator will flashes red and blue, the headset will prompt "Power ON", and then prompt "Pairing".
B. Search and click the "KH156M" on the Bluetooth list of your phone, the headset will prompt "Paired" and then prompt your headset is connected (the LED indicator will disappear and show blue every 10 seconds). Now, you can listen to music through the headset.

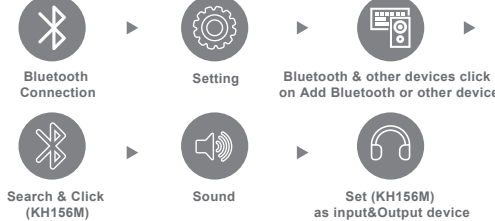


4. Bluetooth Pairing and Connect with PC

- A. Pair with a Computer Via Bluetooth
1. In off status, long press ON/OFF button for 3 seconds to power on, KH156M will enter pairing mode automatically, the LED indicator will flashes red and blue, the headset will prompt "Power ON", and then prompt "Pairing".

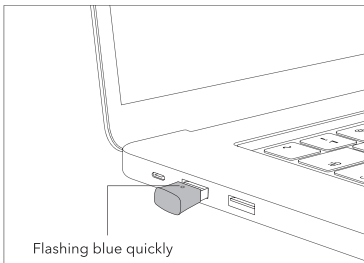
3

2. On your PC, select Start > Settings > Bluetooth & other devices > Add Bluetooth or other device > Bluetooth > Click on the model number [KH156M] of your device. A window will pop up indicating the Bluetooth connection is complete. You will hear "Your headset is connected" at the same time. If your computer asks for a Bluetooth driver, contact your computer manufacturer.

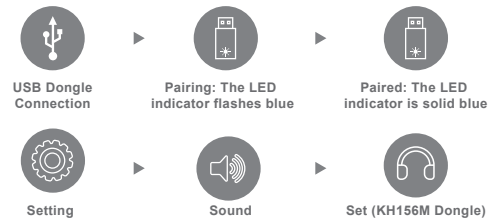


5. KH156M & Computer Adapter Pairing

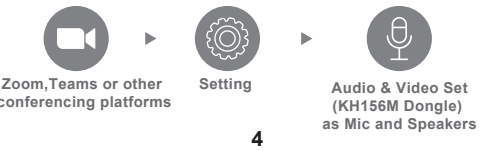
1. Initial pairing KH156M with Dongle, please disable the Bluetooth function on your phone/computer previously connected with KH156M.
2. Plug the USB Dongle into the USB port of our computer and wait for your computer to recognize it. The LED indicator on the USB Dongle flashes blue.



3. In off status, long press ON/OFF button for 3 seconds to power on, KH156M will enter pairing mode automatically, the LED indicator will flashes red and blue, the headset will prompt "Power ON", and then prompt "Pairing".
4. Pairing is successful when you hear "your headset is connected" and the LED indicator on the USB Dongle is solid blue. This pairing process can take up to 10 seconds.



C. Zoom & Other Meeting Apps Settings



Note:

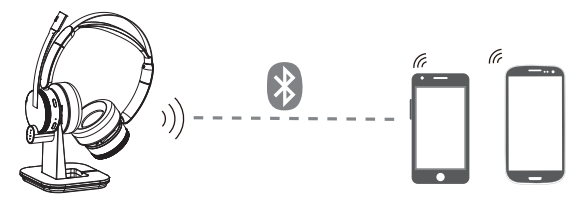
1. KH156M can remember the dongle paired previously. After being paired successfully for the first time, make sure the Bluetooth Dongle is plugged in the computer first and turn on KH156M.
2. Your KH156M headset can be used with dongle and your phone together. Make sure the dongle is plugged into your computer and the Bluetooth function on your phone is enabled before turning on KH156M. Music only will be played via the computer. Your phone or computer can answer calls.

Troubleshooting:

- Q: The Bluetooth Dongle won't turn on after plugging into the USB port.**
A: Try another USB port. After being plugged in, the Dongle will power on automatically and the indicator flashes blue quickly.
Q: The Bluetooth Dongle doesn't pair with KH156M.
A: Please make sure the Bluetooth Dongle is in pairing mode and KH156M is in auto-repairing mode, and wait them to pair automatically.
Q: The Bluetooth Dongle won't auto-reconnect with KH156M.
A: When the headset is charged (via cable directly or via charging stand), it will lose connection, it is designed to protect the headset. So after charged, the headset is in off status and won't reconnect with Bluetooth Dongle. You need to turn off the headset and turn it on again.
Q: Unable to play music after connected with KH156M.
A: Check if your headset is used with Dongle and your phone/computer at the same time. If yes, music can be played via the Dongle only.

6. Connection with Two Devices

- A. Two devices that connected to KH156M are divided into two sets: Device A and Device B.
B. In off status, long press ON/OFF button for 3 seconds to power on, KH156M will enter pairing mode automatically, the LED indicator will flashes red and blue, the headset will prompt "Power ON", and then prompt "Pairing".
C. Turn on the Bluetooth of device A and search for "KH156M", then click to connect. Be sure the device A is connected successfully, turn off the Bluetooth of device A and KH156M will enter pairing mode again.
D. Use device B to connect with KH156M (the same steps as connecting device A). Be sure the device B is connected successfully, turn on the Bluetooth of device A and click KH156M to connect. (Some devices may have the automatic connection function).



Please note:

Music only can be played through one phone while connecting with two phones. If you want to play music from another phone, you need to pause or close the music of phone you are using. The same operation during talking status.

5

7. How to Restore Factory Settings

1. Disconnect from the device.
2. Delete the Bluetooth device information of the headset from your device.
3. Press and hold the MFB button and the "ON/OFF" button simultaneously for at least 5 seconds.
4. The initialization is complete when the light indicator (purple) flashes once.
5. Pair the headset with your computer again.
Note:
After initialization, the headset will return to the factory settings and all Bluetooth pairing information will be deleted.

8. Fix Microphone Issue

If the KH156M headset microphone has no sound after paired KH156M to a computer via USB Dongle, please follow the steps below:

1. Make sure the KH156M headset and dongle are paired successfully, display light is solid blue.
2. Unplug the dongle and plug it into another USB port.

If pairing is not successful, please try the steps below:

- 1) Reset the headset (please refer to the reset section).
2) Unplug the dongle and plug it into another USB port.
3. After the KH156M headset and dongle are paired successfully, please follow the steps below:
1) Right-click the Speakers icon at the bottom right, then click "Open Sound settings".
2) Make sure that [KH156M dongle] has been selected as both the output and input device. Then close Settings.

If there is still no sound, the microphone of the headset may be disabled or [KH156M dongle] is not set as the default device on your computer.

- 1) Right-click the Speakers icon at the bottom right, then click "Sound".
2) Click "Recording" and "Playback", then set [KH156M dongle] as default device and make sure it is enabled.
3. Make sure apps have access to the microphone
If your microphone isn't detected, you may need to give your apps permission to use it. (Take windows 10 as example).
1) To let apps access the microphone, select Start, then select Settings> Privacy> Microphone. Select Change, then turn on Allow apps to access your microphone.

- 2) After allowing access to the microphone, you can choose which Microsoft Store apps can access these features under Choose which Microsoft Store apps can access your microphone, and give access to non-Microsoft-Store desktop apps by ensuring that the switch beneath Allow desktop apps to access your microphone is set to On.

4. Make sure the [KH156M Dongle] is set as microphone and speaker device. (Take Skype as example)
1) Open Skype and choose settings.
2) In Audio & Video, set [KH156M dongle] as Microphone and Speakers.

If you connect the computer and the headset via Bluetooth instead of the dongle, please follow above instructions also.
And if there are any issues, please contact: support@soothielec.com

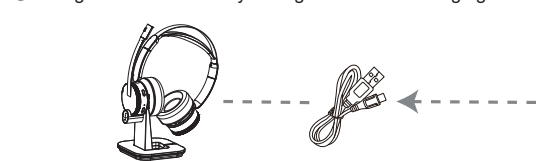
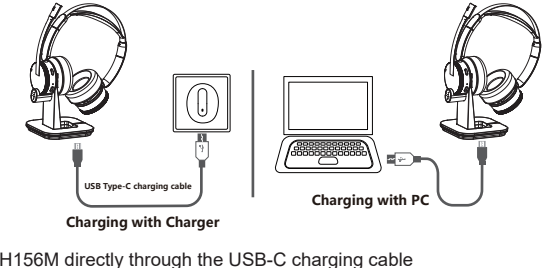
7

9. Charging

- A. Please charge the KH156M when the Red LED flashes.
B. Charging time is about 2 hours. When it is charged, LED keeps solid red.
C. When it is full charged, Solid Red LED turns off and Blue LED turns on.

Two ways of Charging

- ① Charge KH156M through the charging base (the base without battery and needs to be plugged with the USB-C cable):



Please note:

If you don't use the headset for long time, please keep charging it every 2 months at least

10. LED Indicator

Mode	LED Indicator
Power on	Blue LED flashes 2 times
Power off	Red LED flashes 2 times
Pairing mode	Red & Blue LED flash alternately
Connected standby mode	Blue LED flashes once every 10 seconds
Playing Music	Blue LED flashes once every 10 seconds
Talking	Blue LED flashes once every 10 seconds
Delete pairing record	Red & Blue LED on for 11 time
Charging	Solid Red LED
Full charged	Solid Blue LED
Low battery	Red LED flashes

11. Voice Prompt

Power on	Power on
Enter pairing mode	Pairing
Pair successfully	Paired
Connected	Your headset is connected
Disconnect	Your headset is disconnected
Power off	Power off
Microphone mute on	Mute on
Microphone mute off	Mute off
Low battery	Battery Low (every 3 minutes)

12. Product Specification

Bluetooth Version	Bluetooth V5.2
Frequency Range	2.402-2.480GHz
Bluetooth Protocols	HSP, HFP, A2DP, AVRCP
CODEC	AAC, SBC, aptX, aptX-HD, aptX Adaptive
Bluetooth Chipset	QCC3040
ENC	>25db (-20db-4000Hz)
Operation Range	10 meters
Music Time	About 30 hours (70% Volume)
Task Time	About 25 hours (70% Volume)
Battery Type	3.7V, 450mAh, Lithium ion polymer battery
Charging Time	About 2 hours
Work Temperature	-10~55℃
Headset Dimension	187*170*68mm
Base Dimension	105*100*104.5mm
Headset Net Weight	About 190.5g
Base Net Weight	About 170g

8

13. Attentions and Q & A

- A. How to reconnect and operation when failed to reconnect?**
When KH156M connected with your mobile phone successfully at the first time, it will search and reconnect the paired device automatically when power on, if failed, please clear the pairing records, then connect your phone again.

- B. How to delete paired records?**
In power on status, long press the MFB and ON/OFF Button for 5 seconds to clear the pairing record. After deleting, the headset will not connect devices automatically.

- C. What's the password for pairing?**
Some connection devices require password for pairing, please try 0000 or 8888 or 1111 or 1234. If all can't work, please contact us: support@soothielec.com

- D. What devices could charge for the headphones?**
Any car charger, power bank, PC etc. which meet DC 5V, charging current more than 500mA could be charge for KH156M.

- E. How to do if can not power or dead?**
You can try charging next by pressing the multi-function button when charge to reset. Or you can try to delete paired records, long press the MFB and ON/OFF Button for 5 seconds to clear the pairing record. If all can't work, please contact us: support@soothielec.com

- F. Why the headphone power off automatically?**
KH156M will power off under standby mode for over 10 minutes, or the battery voltage is less than 3.7V.

9

FCC Warning

This device complies with part 15 of the FCC Rules. Operation is subject to the following two conditions: (1) This device may not cause harmful interference, and (2) this device must accept any interference received, including interference that may cause undesired operation. Any Changes or modifications not expressly approved by the party responsible for compliance could void the user's authority to operate the equipment.

Note: This equipment has been tested and found to comply with the limits for a Class B digital device, pursuant to part 15 of the FCC Rules. These limits are designed to provide reasonable protection against harmful interference in a residential installation. This equipment generates uses and can radiate radio frequency energy and, if not installed and used in accordance with the instructions, may cause harmful interference to radio communications. However, there is no guarantee that interference will not occur in a particular installation. If this equipment does cause harmful interference to radio or television reception, which can be determined by turning the equipment off and on, the user is encouraged to try to correct the interference by one or more of the following measures:

- Reorient or relocate the receiving antenna.
- Increase the separation between the equipment and receiver.
- Connect the equipment into an outlet on a circuit different from that to which the receiver is connected.
- Consult the dealer or an experienced radio/TV technician for help.

The device has been evaluated to meet general RF exposure requirement. The device can be used in portable exposure condition without restriction.

We'd love to help!

If you have any problems setting up or using our KH156M Bluetooth headset, please contact us by email at: **support@soothielec.com**
Please read this manual carefully before using the product and keep it properly. Alternatively, solutions to common problems can be found in the Attentions and Q&A section.

