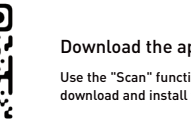




A Connect the device



Download the app

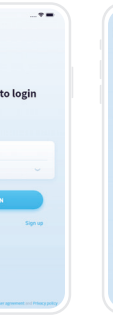
Use the "Scan" function of your mobile phone to scan the QR code, download and install the "iCam365" APP



Connect power

Connect the device to the power supply and wait for about 1 minute

B Add device



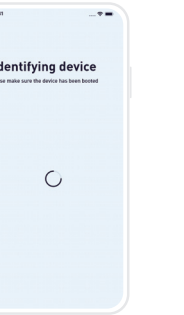
01.log in



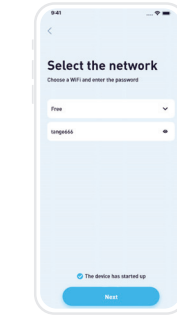
02.Add device



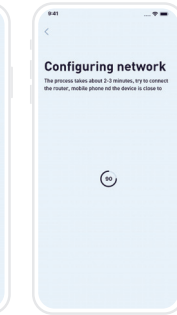
03.Scan the QR code of the fuselage



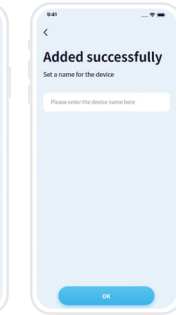
04.Waiting for a utomatic recognition



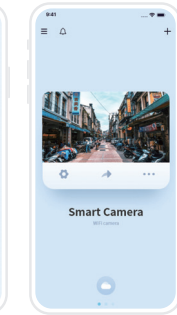
05.Select the WiFi to connect to and enter the password



06.Waiting to configure the network



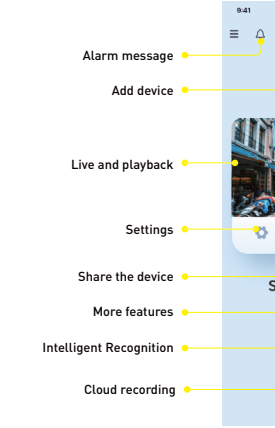
09.The addition is complete, the device is named



The device will appear on your homepage

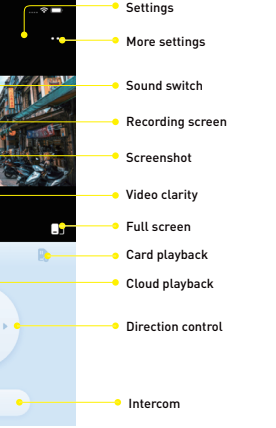
App will be updated continuously, and the interface is subject to App

C Function Description



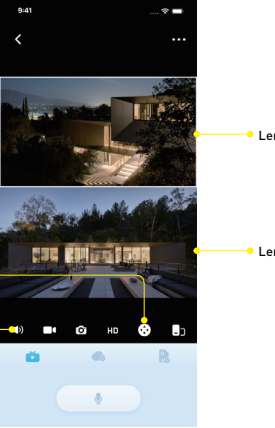
App will be updated continuously, and the interface is subject to App

D Common problem



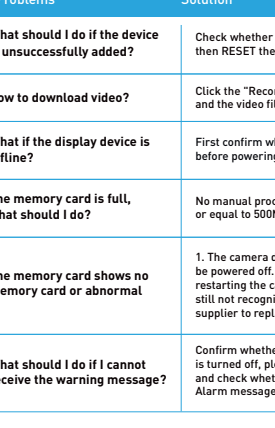
App will be updated continuously, and the interface is subject to App

E Common problem



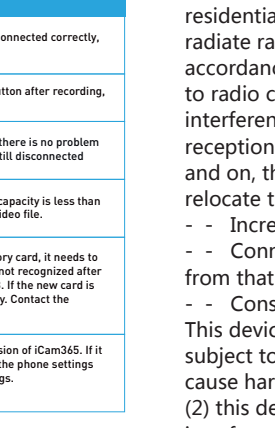
App will be updated continuously, and the interface is subject to App

F Common problem



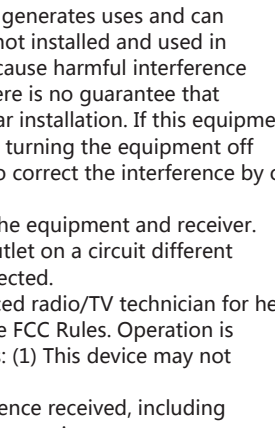
App will be updated continuously, and the interface is subject to App

G Common problem



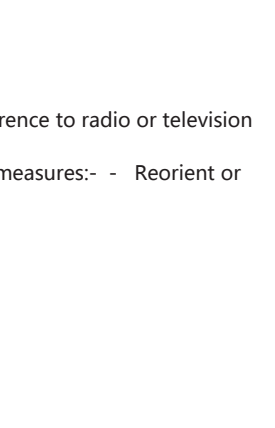
App will be updated continuously, and the interface is subject to App

H Common problem



App will be updated continuously, and the interface is subject to App

I Common problem



App will be updated continuously, and the interface is subject to App

J Common problem

App will be updated continuously, and the interface is subject to App

K Common problem

App will be updated continuously, and the interface is subject to App

L Common problem

App will be updated continuously, and the interface is subject to App

M Common problem

App will be updated continuously, and the interface is subject to App

N Common problem

App will be updated continuously, and the interface is subject to App

O Common problem

App will be updated continuously, and the interface is subject to App

P Common problem

App will be updated continuously, and the interface is subject to App

Q Common problem

App will be updated continuously, and the interface is subject to App

R Common problem

App will be updated continuously, and the interface is subject to App

S Common problem

App will be updated continuously, and the interface is subject to App

T Common problem

App will be updated continuously, and the interface is subject to App

U Common problem

App will be updated continuously, and the interface is subject to App

V Common problem

App will be updated continuously, and the interface is subject to App

W Common problem

App will be updated continuously, and the interface is subject to App

X Common problem

App will be updated continuously, and the interface is subject to App

Y Common problem

App will be updated continuously, and the interface is subject to App

Z Common problem

App will be updated continuously, and the interface is subject to App

AA Common problem

App will be updated continuously, and the interface is subject to App

AB Common problem

App will be updated continuously, and the interface is subject to App

AC Common problem

App will be updated continuously, and the interface is subject to App

AD Common problem

App will be updated continuously, and the interface is subject to App

AE Common problem

App will be updated continuously, and the interface is subject to App

AF Common problem

App will be updated continuously, and the interface is subject to App

AG Common problem

App will be updated continuously, and the interface is subject to App

AH Common problem

App will be updated continuously, and the interface is subject to App

AI Common problem

App will be updated continuously, and the interface is subject to App

AJ Common problem

App will be updated continuously, and the interface is subject to App

AK Common problem

App will be updated continuously, and the interface is subject to App

AL Common problem

App will be updated continuously, and the interface is subject to App

AM Common problem

App will be updated continuously, and the interface is subject to App

AN Common problem

App will be updated continuously, and the interface is subject to App

AO Common problem

App will be updated continuously, and the interface is subject to App

AP Common problem

App will be updated continuously, and the interface is subject to App

AQ Common problem

App will be updated continuously, and the interface is subject to App

AR Common problem

App will be updated continuously, and the interface is subject to App

AS Common problem

App will be updated continuously, and the interface is subject to App

AT Common problem

App will be updated continuously, and the interface is subject to App

AU Common problem

App will be updated continuously, and the interface is subject to App

AV Common problem

App will be updated continuously, and the interface is subject to App

AW Common problem

App will be updated continuously, and the interface is subject to App

AX Common problem

App will be updated continuously, and the interface is subject to App

AY Common problem

App will be updated continuously, and the interface is subject to App

AZ Common problem

App will be updated continuously, and the interface is subject to App

BA Common problem

App will be updated continuously, and the interface is subject to App

BB Common problem

App will be updated continuously, and the interface is subject to App

BC Common problem

App will be updated continuously, and the interface is subject to App

BD Common problem

App will be updated continuously, and the interface is subject to App

BE Common problem

App will be updated continuously, and the interface