

User Manual for WIFI Camera



100-2000-1000-1000

Warning:

This device complies with Part 15 of the FCC Rules. Operation is subject to the following two conditions: (1) this device may not cause harmful interference, and (2) this device must accept any interference received, including interference that may cause undesired operation.

Changes or modifications not expressly approved by the party responsible for compliance could void the user's authority to operate the equipment.

NOTE: This equipment has been tested and found to comply with the limits for a Class B digital device, pursuant to Part 15 of the FCC Rules. These limits are designed to provide reasonable protection against harmful interference in a residential installation. This equipment generates uses and can radiate radio frequency energy and, if not installed and used in accordance with the instructions, may cause harmful interference to radio communications. However, there is no guarantee that interference will not occur in a particular installation. If this equipment does cause harmful interference to radio or television reception, which can be determined by turning the equipment off and on, the user is encouraged to try to correct the interference by one or more of the following measures:

- Reorient or relocate the receiving antenna.
- Increase the separation between the equipment and receiver.
- Connect the equipment into an outlet on a circuit different from that to which the receiver is connected.
- Consult the dealer or an experienced radio/TV technician for help.

RF Exposure Statement

To maintain compliance with FCC's RF Exposure guidelines, This equipment should be installed and operated with minimum distance of 20cm the radiator your body. This device and its antenna(s) must not be co-located or operation in conjunction with any other antenna or transmitter

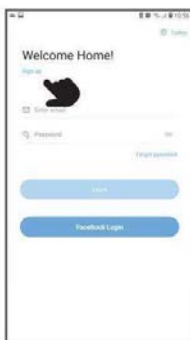
First, download **"YI IoT"** app on your mobile phone and sign up.



YI IoT (yi iot)



Google PlayStore
Apple AppStore

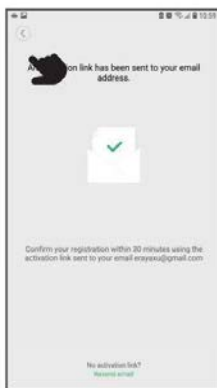


Fill the form and choice your own password. After then click SingUp button.

A screenshot of a mobile application's 'Sing up' screen. The screen has a white background with a light blue header bar. Below the header, there are four input fields: 'Enter email', 'Username', 'Password', and 'Confirm new password'. Each field has a small icon to its left. Below these fields is a checkbox labeled 'I AGREE TO THE TERMS AND CONDITIONS'. To the right of the checkbox is a small image of a document with a red 'X' mark. Below the checkbox is a small text box with the text 'Password Format: 8-16 characters long, use at least three of the following types of characters: numbers, uppercase characters, lowercase characters, symbols'. At the bottom of the screen is a large blue button labeled 'Sign up'. A hand icon is pointing at the button.

Note: The password must be 8 characters and contain uppercase letters and numbers

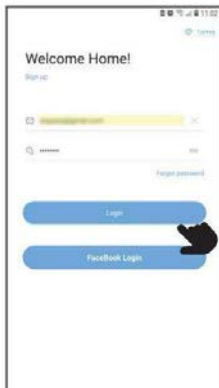
Now check your email address and click the activation link. Then click back arrow on application screen.



Note: The activation link depends on the speed of your internet connection. It will arrive in 10 minutes.

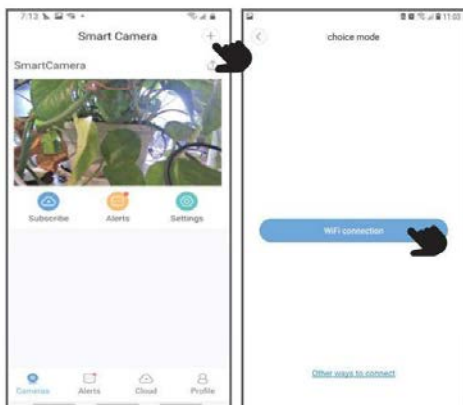
You will now come to the login screen again. Fill your email and password and push Log In button.

You will see some informations about buttons after push the log in button.



Note: This informations will appear in the first installation only, after then it will not appear again.

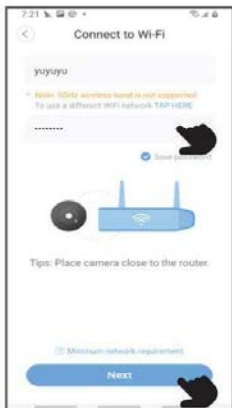
We need to run the camera after installing the app and before pressing the add camera button (+). Use the USB cable and power adaptor in the package and power on your IP camera. Your IP camera will turn on in about 15-20 seconds and the blue led light will light up.



Press the camera add button (+).

Press the wifi connection button.

Note: The application will first automatically display the wifi name of your mobile phone connection. There is an option to connect to a different wifi network.



Press the button after you Enter your wifi password hear the sound from the IP and go to the next step.

Point the QR barcode that appears on your phone towards the camera. Approach it at a distance of 40-15 cm. Wait for the connection to be established.

You will see the connection setup is being prepared on the screen. This process may take 2-3 minutes.



You will hear sound when connected and then press the next step button.

Once you have successfully connected, you can name your camera or choose from preset names. Press finish button.

You will see start the paired camera button. Press the button and start using.



Note: You will see some presentation screens after clicking the Finish button. You can skip them later with the step button.

(Home) Enable camera on the main menu, simply click on the image to enable

The active camera will look like the following. The functions of the icons that appear on the screen are as follows.

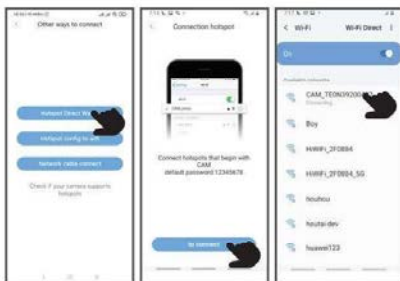


1. Hear the voice, 2. Record, 3. Microphone, 4. Control direction, 5. Screenshot, 6. Alerts for motion detector (It automatically records video of motion), 7. Full screen, 8. Camera setting

OTHER CONNECTION OPTIONS

Hotspot Direct Watch

This option is made by connecting directly to the wireless network on the device. It is not suitable for long distances.



Press the hotspot connection button from the Other ways to connection menu.

Wifi item name start with "CAM_"

Default password is 12345678

Press the start with CAM_ wifi name and back to camera view menu on app.

Repeat the steps on the previous page.

MOTION DETECTION

You can activate this function from camera options. From notifications to you in the Alert tab. You can see the short video of the moment of motion. This video is saved on your phone.



RECORD FUNTION

There are two different recording functions. One to the memory card (TF card max 64Gb) and the other to the cloud. When you insert the memory card and set it in the options, the recording post will start automatically.

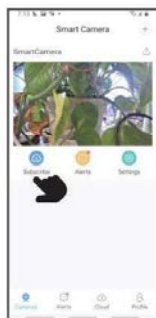


CLOUD STORAGE

This function is provided by the app for a fee. 7 days free usage for experience.

Troubleshooting

Information: Please write down the password of the internet WIFI network at home on a piece of paper.



Q: The camera is offline or not working

1. Check if the power supply is working properly
2. Power off and restart the device to reconnect to the network
3. The signal coverage is weak
4. Signal interference shielding in special places

Q: How does the camera store video?

1. The camera supports the TF card format with a maximum capacity of 64gb. After the card is recognized, it automatically records, and when the storage is full, it automatically overwrites the original recording and loops recording.
2. Support opening cloud storage service to store video.