

LED T8 lamp instruction manual

一、Specifications and technical parameters

Model NO.	rated power (W)	Lamp Cap	CCT (K)	rated luminous flux (lm)	diameter (mm)	Length (mm)	rated current (mA)	Replacement of traditional fluorescent lamp models
E2CL1800-865 G13 1200-2	12W	G13	6500	1800	26	1200	/	
E2CL1800-860 G13 1200-2	12W	G13	6000	1800	26	1200	/	
E2CL1800-850 G13 1200-2	12W	G13	5000	1800	26	1200	/	
E2CL1800-840 G13 1200-2	12W	G13	4000	1800	26	1200	/	
E2CL1800-830 G13 1200-2	12W	G13	3000	1800	26	1200	/	
E5CL1800-865 G13 1200-2	12W	G13	6500	1800	26	1200	/	
E5CL1800-860 G13 1200-2	12W	G13	6000	1800	26	1200	/	
E5CL1800-850 G13 1200-2	12W	G13	5000	1800	26	1200	/	
E5CL1800-840 G13 1200-2	12W	G13	4000	1800	26	1200	/	
E5CL1800-830 G13 1200-2	12W	G13	3000	1800	26	1200	/	
E2CL2250-865 G13 1200-2	15W	G13	6500	2250	26	1200	/	
E2CL2250-860 G13 1200-2	15W	G13	6000	2250	26	1200	/	
E2CL2250-850 G13 1200-2	15W	G13	5000	2250	26	1200	/	
E2CL2250-840 G13 1200-2	15W	G13	4000	2250	26	1200	/	
E2CL2250-830 G13 1200-2	15W	G13	3000	2250	26	1200	/	
E5CL2250-865 G13 1200-2	15W	G13	6500	2250	26	1200	/	
E5CL2250-860 G13 1200-2	15W	G13	6000	2250	26	1200	/	
E5CL2250-850 G13 1200-2	15W	G13	5000	2250	26	1200	/	
E5CL2250-840 G13 1200-2	15W	G13	4000	2250	26	1200	/	
E5CL2250-830 G13 1200-2	15W	G13	3000	2250	26	1200	/	
E2CL1500-865 G13 1200-2	10W	G13	6500	1500	26	1200	/	
E2CL1500-860 G13 1200-2	10W	G13	6000	1500	26	1200	/	
E2CL1500-850 G13 1200-2	10W	G13	5000	1500	26	1200	/	
E2CL1500-840 G13 1200-2	10W	G13	4000	1500	26	1200	/	
E2CL1500-830 G13 1200-2	10W	G13	3000	1500	26	1200	/	
E5CL1500-865 G13 1200-2	10W	G13	6500	1500	26	1200	/	
E5CL1500-860 G13 1200-2	10W	G13	6000	1500	26	1200	/	
E5CL1500-850 G13 1200-2	10W	G13	5000	1500	26	1200	/	
E5CL1500-840 G13 1200-2	10W	G13	4000	1500	26	1200	/	
E5CL1500-830 G13 1200-2	10W	G13	3000	1500	26	1200	/	
E2CL1200-865 G13 1200-2	8W	G13	6500	1200	26	1200	/	
E2CL1200-860 G13 1200-2	8W	G13	6000	1200	26	1200	/	
E2CL1200-850 G13 1200-2	8W	G13	5000	1200	26	1200	/	
E2CL1200-840 G13 1200-2	8W	G13	4000	1200	26	1200	/	
E2CL1200-830 G13 1200-2	8W	G13	3000	1200	26	1200	/	
E5CL1200-865 G13 1200-2	8W	G13	6500	1200	26	1200	/	
E5CL1200-860 G13 1200-2	8W	G13	6000	1200	26	1200	/	
E5CL1200-850 G13 1200-2	8W	G13	5000	1200	26	1200	/	
E5CL1200-840 G13 1200-2	8W	G13	4000	1200	26	1200	/	
E5CL1200-830 G13 1200-2	8W	G13	3000	1200	26	1200	/	
luminous efficacy: 135lm/W rated life: 25000H. CRI 80								

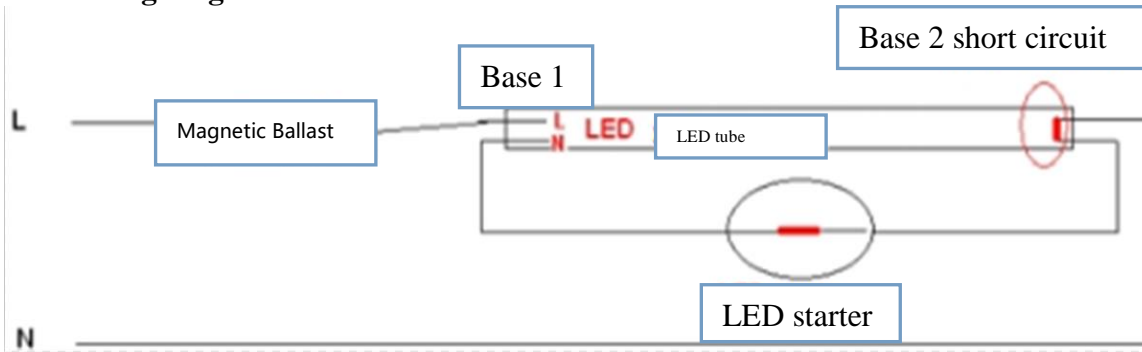
Rated voltage(V) : 100-240V~,50/60Hz

Operating temperature and humidity : -20℃~45℃ 10%~90%

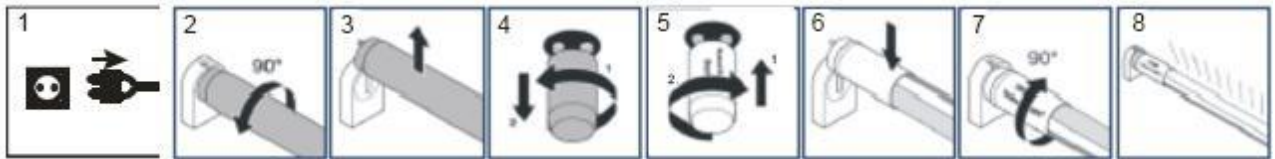
Bluetooth : -6dBm(Type EIRP),8.6dBm (Conducted Peak Power) @2400-2483.5MHz

5.8 GHz Radar:0.2mW(Type EIRP) @ 5735-5840 MHz

二、wiring diagram



三、Installation instructions



- 1.power cut off switch(Fig 1)
- 2.Remove the fluorescent tube(Fig.2,3)
- 3.Remove the fluorescent lamp starter(Fig.4)
4. Install the LED starter(Fig.5)
- 5.Install the LED tube(Fig.6)
6. Turn the LED tube 90 degrees to bring the cap to a safe position/(Fig.7)
- 7.Turn on the power switch to power the fixture.(Fig.8)

Warnings

- 1.Please read the Installation instructions carefully and follow the Installation instructions before installation and use.
- 2.Do not use in corrosive, flammable and explosive places.
- 3.It can not be installed near the heat source, so as not to increase the temperature of the fixture and damage the fixture.
4. Ensure that all connectors are properly and reliably connected
- 5.Non-professional personnel shall not open the cover of the product.
- 6.Disconnect the power supply when connecting for installation or disassembly.
- 7.This device is only installed by professional personnel. Non-professionals are not allowed to disassemble or install the equipment.
- 8.The optical radiation emitted by this LED luminaire belongs to the non-hazardous category according to IEC/TR62778.

9.Only suitable for replacing fixturs used with Magnetic Ballast.



10.This LED tube is only suitable for general lighting (excluding such as explosive environment),ThisLED tube is not suitable to be used in emergency luminaires designed for double-capped fluorescent lamp(s).



11. This LED tube may not be suitable for all situations where traditional fluorescent tubes are used. The temperature range of the LED tube is more limited, such as on Questions about the suitability of the application should be consulted by the producer of the LED tubes.

12. Warning: Any constructive change of the luminaire in case of applying retrofit LED lamps shall not be permitted.

Appendix: Statement

FCC Caution: Any changes or modifications not expressly approved by the party responsible for compliance could void the user's authority to operate this device.

This device complies with Part 15 of the FCC Rules. Operation is subject to the following two conditions: (1) This device may not cause harmful interference, and (2) this device must accept any interference received, including interference that may cause undesired operation.

Note: This device has been tested and found to comply with the limits for a Class B digital device, according to part 15 of the FCC Rules. These limits are designed to provide reasonable protection against harmful interference in a residential installation. This device generates, uses, and can radiate radio frequency energy and, if not installed and used following the instructions, may cause harmful interference to radio communications. However, there is no guarantee that interference will not occur in a particular installation.

If this device does cause harmful interference to radio or television reception, which can be determined by turning the device off and on, the user is encouraged to try to correct the interference by one or more of the following measures:

- Reorient or relocate the receiving antenna.
- Increase the separation between the device and receiver.
- Connect the device to an outlet on a circuit different from that to which the receiver is connected.
- Consult the dealer or an experienced radio/TV technician for help.

Radiation Exposure Statement

This device complies with FCC radiation exposure limits set forth for an uncontrolled rolled environment. This device should be installed and operated with a minimum distance of 20cm between the radiator and your body.

CE Caution: This equipment has been tested and found to comply with the limits for an EN 300 440 v2.2.1 receiver Category 3. These limits are designed to provide reasonable protection against harmful interference in a residential installation. When placed in the vicinity of other device(s) radiating in the 5735 MHz-5840 MHz band, this device will inadvertently trigger on, or will fail to switch off with its movement sensor capability being impaired. Please take appropriate measures to mitigate this eventuality.

Declaration of Conformity European Notice



Hereby, Zhejiang Lingzhu Technology Co., Ltd. declares that this module product is in compliance with essential requirements and other relevant provisions of Directive 2014/53/EU, 2011/65/EU. A copy of the Declaration of Conformity can be found at <http://www.smartlz.com>



This product must not be disposed of as normal household waste, in accordance with the EU directive for waste electrical and electronic equipment (WEEE- 2012/19/EU). Instead, it should be disposed of by returning it to the point of sale, or to a municipal recycling collection point.

The device could be used with a separation distance of 20cm from the human body.

By Company

Zhejiang Lingzhu Technology Co., Ltd.

Room 302, No 1 Building Huace Center, Xihu District, Hangzhou City, Zhejiang, China