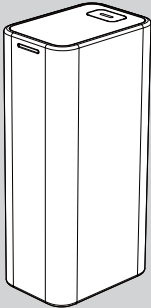


Power Bar
(Bluetooth LE)
Quick Start Guide



Important Safety Instructions

Improper use of the product may lead to battery malfunction or severe overheating, and may even cause fire or explosion. To avoid any damage to you and your property, please follow the instructions below when you use and store the product.

1. This is NOT a toy! Please place this product in areas that are not easily accessible by children Do not allow children to operate this product, or accidents may occur.
2. Please charge this product with a charger approved by the local safety standards in case of danger or damage.
3. DO NOT apply pressure, and avoid collisions. The battery and circuit may be damaged if this product falls from a great height, experiences intense shocks, or is immersed in liquid; if so, please avoid using this product.
4. If this product suffers from deformation, leakage, or radical decline in performance, please stop using this product.
5. Please DO NOT charge any device or recharge this product in places that may affect its heat dissipation, such as pants pockets, enclosed bags, beds, or couches. Ensure this product is not under any cover when operating When charging other devices for prolonged periods DO NOT stack any device on top of this product, or it might affect its heat dissipation.
6. This product CAN NOT be disassembled, applied pressure, pied, short-circuited, immersed in liquid, disposed of in a fire, or exposed to a high temperature or heat source with a temperature greater than 140°F (60°C)
7. DO NOT place this product in areas with extremely high temperatures Such as under direct sunlight or in a vehicle with a very high interior temperature.
8. DO NOT dispose of this product as domestic waste. It should be handed over to a designated facility for electronic device recycling.
9. If this product is not used for an extended period, you should charge and discharge it once every three months.
10. Under normal operation conditions, the battery performance will decline over several years.

Attention

- Please fully charge this device before using it for the first time.
- The power bar have conversion efficiency, so the battery capacity of power bar is not equal to the rechargeable capacity.
- Please choose an appropriate charge for recharging this product and suitable cables when charging devices.
- Please ensure some supervision is in progress when recharging the product, DO NOT charge this product without any care.
- Please remove the cable when recharging this product and finish recharging for any other device to preserve the product's integrity.
- If the indication does not light up after pressing the power button, please recharge this product.
- Please present this product with a battery percentage between 25%~50% for long-term storage, place this product in a cool and dry environment. To slow down battery aging, avoid storing this product in an empty or full charge for long-term storage.

Caution

- This product does not contain any user-serviceable parts, and the rechargeable battery is not replaceable.
- Putting the battery pack into fire or heating it in an oven, as well as subjecting the battery pack to mechanical squeezing or cutting, may result in an explosion.
- Placing the battery pack in an extremely high-temperature environment may cause an explosion or leakage of flammable liquids or gases.
- If the battery pack is exposed to extremely low air pressure, it may cause an explosion or leakage of flammable liquids or gases.
- Note: DO NOT use this product after soaking in water, battery should not be exposed to such as sunlight, fire or similar overheating environment! If consumers use a power adapter for power supply, they should purchase a power adapter that is certified and meets the requirements of the standard If the battery is not replaced properly, there is a risk of explosion, and it can only be replaced with the same type or equivalent type of battery.

warn

DO NOT disassemble, impact, squeeze or expose to fire, in case of severe swelling, DO NOT continue to use. DO NOT place it in a high-temperature environment and DO NOT use it after soaking in water.

Statement on Toxic and Hazardous Substances in Electronic Information Products

Part description	Toxic or hazardous substances and elements					
	Lead (Pb)	Mercury (Hg)	Cadmium (Cd)	Hexavalent chromium (Cr VI)	Polybrominated biphenyls (PBB)	Polybrominated biphenyl ethers (PBDE)
PCB	X	O	O	O	O	O
Electrode	O	O	O	O	O	O
Battery	X	O	O	O	O	O
Casing	O	O	O	O	O	O

This from is compiled in accordance with SJ/T 11364
O: Indicates that contents of the toxic and hazardous substances in all homogeneous materials are below the limit requirements specified by GB/T 26572 standard.
X: Indicates that contents of the toxic and hazardous substances exceed the limit requirements specified GB/T 26572 standard in at least one homogeneous material of the component.

Packing List

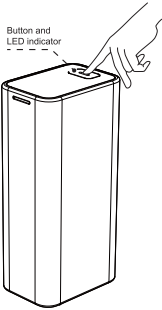
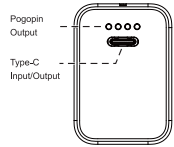


Check battery level

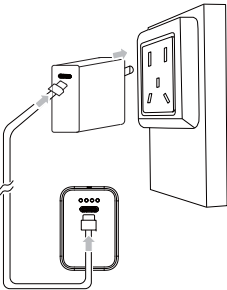
Bluetooth LE Power Bar serve as a power source for smart devices. Can be remotely monitored for battery levels with App.

To check the battery level, please press the button once and determine the battery status based on the color of the indicator light.

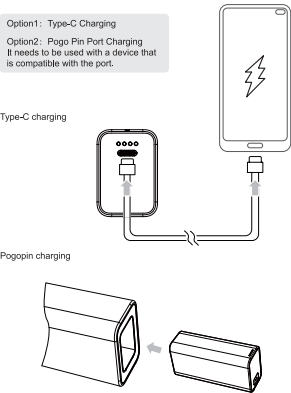
Green light: pairing mode
Blue light: 60%~100%
Orange light: 20%~60%
Red light: 0%~20%



Recharging your power bar



Charging for your devices



Power bar network configuration

Bluetooth LE Power Bar serve as a power source for smart devices. Can be remotely monitored for battery levels with App.

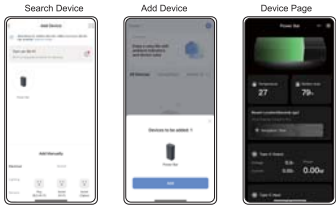
Software installation

1. Scan the QR code and install the opened app on your smartphone.
2. Android phone users: Search for Smart Life in Google Play.
3. iPhone users: Search for Smart Life in the App Store.



Adding device

Turn on Bluetooth on mobile phone, enter "Smart Life" App, select "Add device" and enter "Add device" panel
Long press the power bar for 5 seconds to enter the pairing mode, during which the green LED will flashing
App automatically discovers the power bar, and you can click to add it.
Pairing is complete. Power bar will be added to the App's device list.
Tap on the power bar panel to check the battery level.



Fcc Warning

This device complies with part 15 of the FCC Rules. Operation is subject to the following two conditions:(1) This device may not cause harmful interference, and (2) this device must accept any interference received, including interference that may cause undesired operation.
Any Changes or modifications not expressly approved by the party responsible for compliance could void the user's authority to operate the equipment.
This equipment has been tested and found to comply with the limits for a Class B digital device, pursuant to part 15 of the FCC Rules. These limits are designed to provide reasonable protection against harmful interference in a residential installation. This equipment generates uses and can radiate radio frequency energy and, if not installed and used in accordance with the instructions, may cause harmful interference to radio communications. However, there is no guarantee that interference will not occur in a particular installation. If this equipment does cause harmful interference to radio or television reception, which can be determined by turning the equipment off and on, the user is encouraged to try to correct the interference by one or more of the following measures:
- Relocating or reorienting the receiving antenna.
- Increasing the separation between the equipment and receiver.
- Connecting the equipment into an outlet on a circuit different from that to which the receiver is connected.
- Consulting the dealer or an experienced radio/TV technician for help.
The device has been evaluated to meet general RF exposure requirement. The device can be used in portable exposure condition without restriction.

Specifications

Name	: Power bar	Total output	: 5V=3A
Model No	: PS10-1000	Wireless Standard	: Bluetooth LE 5.0
Battery	: Lithium-ion Battery	Operating Frequency	: IEEE 802.15.1@2.4 GHz ISM band
Capacity	: 4800mAh/3.6V/17.64Wh	Transmit Power	: ≤100dbm
Type-C input	: 5V=3A, 9V=2A	Product size (H*W*D)	: 78*37.8*26.3mm
Type-C output	: 5V=3A, 9V=2.22A, 12V=1.5A	Product weight	: 107g
Pogopin output	: 5V=3A	Warranty	: 2 years

Use Environment

Ambient temperature: ranges from 32°F (0°C) to 86°F(30°C).
Storage ambient temperature: ranges from 32°F(0°C) to 104°F(40°C)



Only suitable for safe use in non-tropical climates

