

Internal Pictures of CardiacConnect 10300 rev 1

Chassis Frame



Figure 1; Top Chassis CardiacConnect



Figure 2; Rear Chassis CardiacConnect



Figure 3; Bottom Chassis CardiacConnect



Figure 4; Right side Chassis CardiacConnect



Figure 5; Left side Chassis CardiacConnect



Figure 6; Front side chassis CardiacConnect

control Boards Chassis

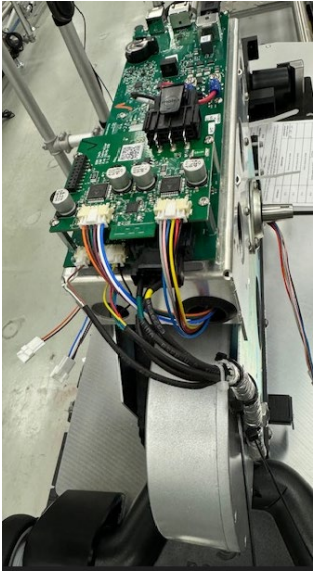


Figure 7; BLDC Motor and EAP Connections



Figure 8; Power Connections CardiacConnect



Figure 9; Tablet enclosure Chassis of CardiacConnect

Printed Circuit Boards Front and Back Pictures of CardiacConnect 10300 Rev 1



Figure 10; Topside Motor controller Board 15749-200 Rev 7

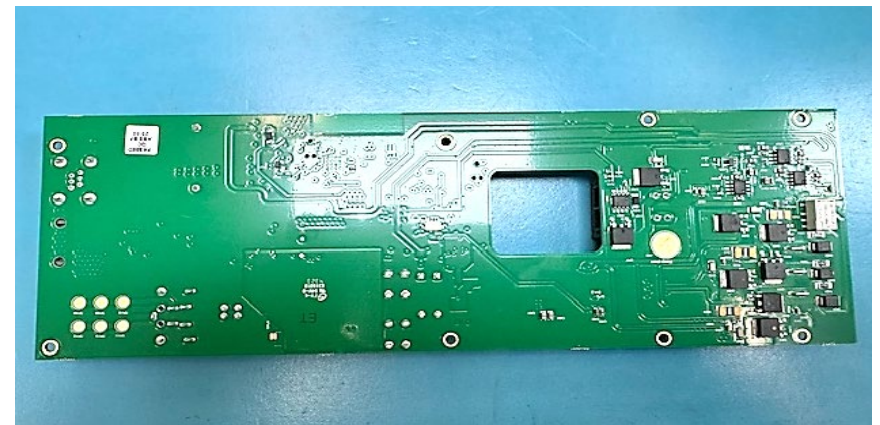


Figure 11; Bottom Side 15749-200 Rev 7

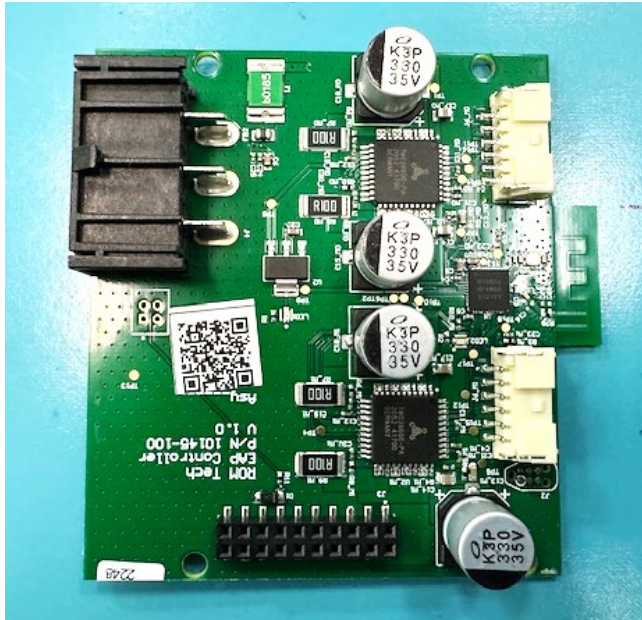


Figure 12; Top side EAP Controller Board, 10145-200 Rev 2

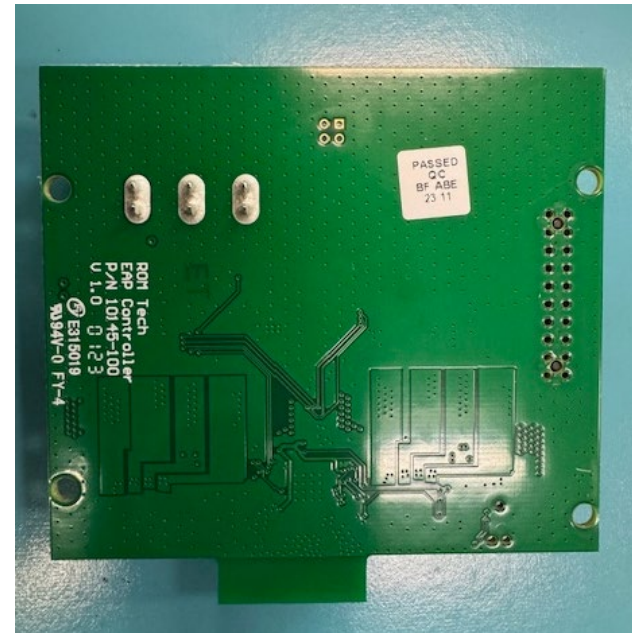


Figure 13; Bottom side EAP Controller Board, 10145-200 Rev 2

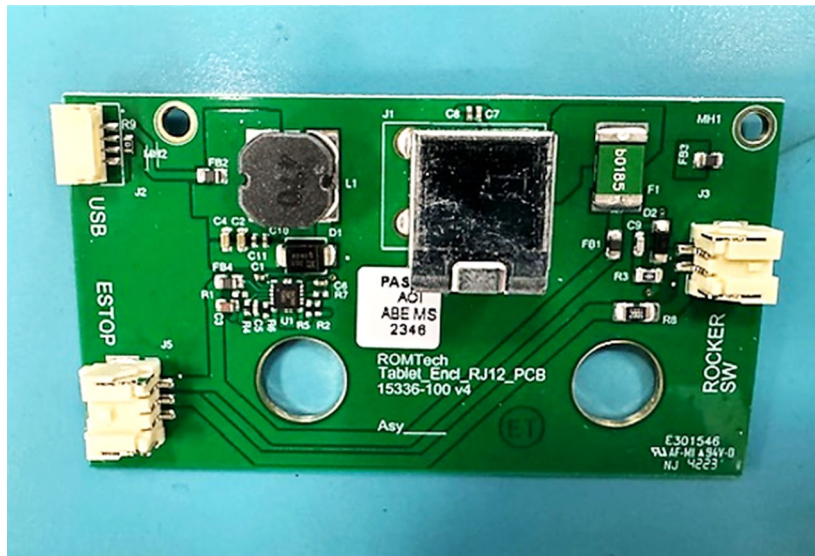


Figure 14; Top side Tablet Enclosure RJ12 PCA, 15336-200 Rev 4



Figure 15; Bottom side Tablet Enclosure RJ12 PCA, 15336-200 Rev 4



Figure 17; Bottom Side Accuradius Zippy PCA ,16614-200 Rev 4

Figure 16; Top side Accuradius Zippy PCA, 16614-200 Rev 4

Antennae Construction



Figure 18; Trace antennae 10145-200 Rev 2 for Bluetooth

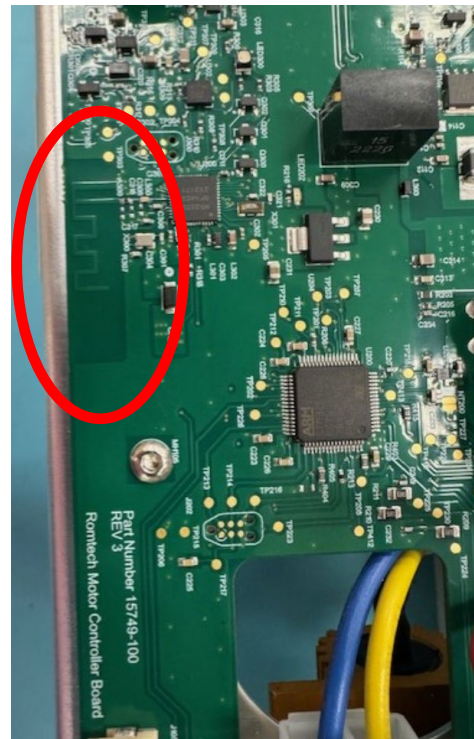


Figure 19; Trace antennae 15749-200 Rev7 for Bluetooth