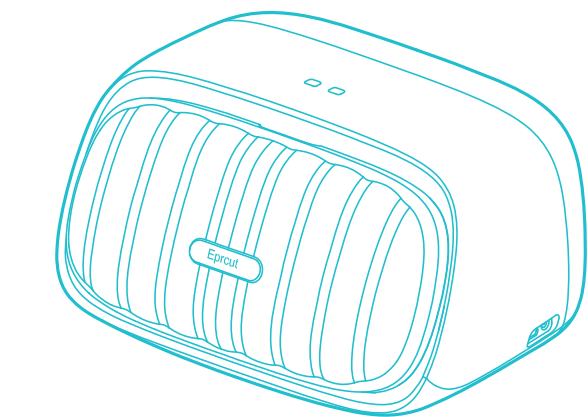


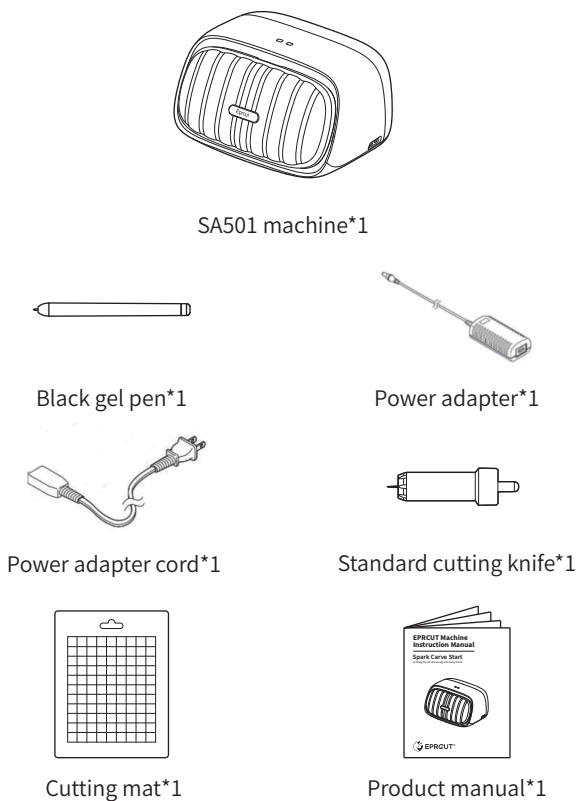
EPRCUT Machine Instruction Manual

Spark Carve Start

to bring the art of carving into every home

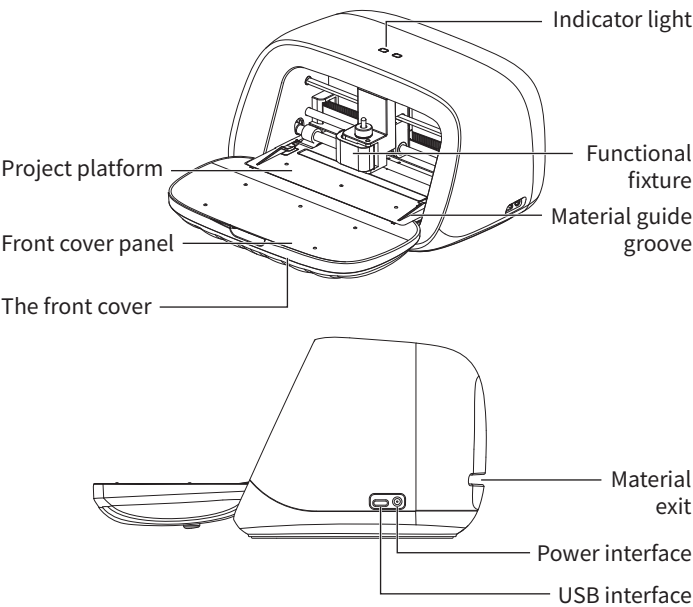


A. Packing List



Note: The product comes with the above items. When unpacking, please check whether the number of items in the box is consistent with the list. If it is inconsistent, please contact customer service or support@eprcut.com.

B. Machine Parts Description



Status indicator light instructions

Green light remains steady	Machine powered on	Green light flashing	Project in progress
Blue light remains steady	Bluetooth to connect	Blue light flashing	Bluetooth waiting for connection
Red light flashing	Machine failure prompt	/	/

C. APP installation

- Go to <https://www.eprcut.com/> on your computer
- Click to select the "Software Download" option on the web page to enter the page
- Select Eprcut App to download

Note: System requirements are Windows 7/MacOS 10.11 and above.

Mobile terminal

Android/IOS

- Open the App Store on your phone (IOS users open the APP Store)
- Search for "Eprcut" App in the search bar
- Select "Eprcut" App next week and install it



Note: The mobile system requires Android5.0/IOS9.0 and above.

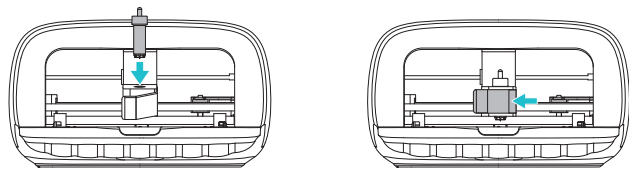
D. Device connection

- After the power adapter is connected to the machine, plug it into the socket to power on.
- Open the Bluetooth settings on your computer/mobile phone and click to connect the device to Bluetooth.
- Open **Eprcut** APP and log in to your personal account.
- Select the model in the device binding interface, then select the machine's Bluetooth name and wait for the account to be bound.
- Choose a preset pattern and follow the process guide for your first printing experience.

E. Accessory installation/replacement

Accessory installation

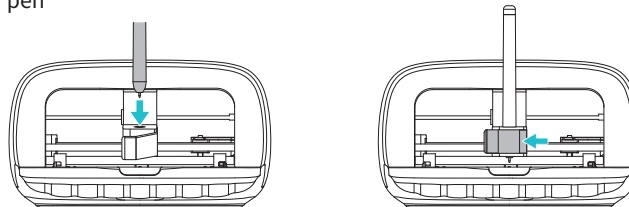
- Open the front cover of the machine
- Open the handle of the tool holder and pliers
- Place the knife holder/gel pen
- Close the handle pliers



Please confirm whether the tool is secure after closing.

Accessory replacement

- Open the knife holder handle pliers
- Take out the knife holder / gel pen
- Place a new knife holder / gel pen
- Close the handle pliers

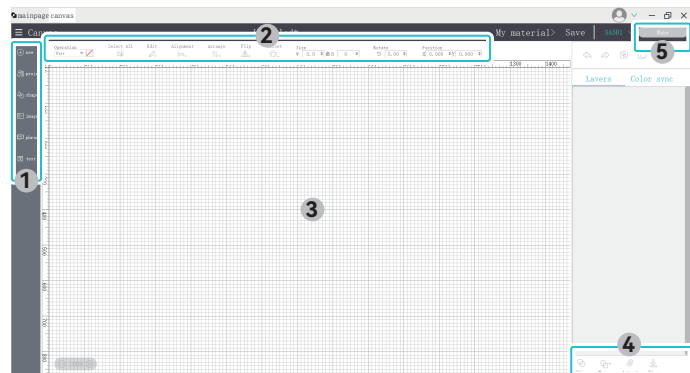


Please confirm whether the tool is secure after closing.

F. Design process guide (take PC page as an example)

Design page area description

- Content selection area
- Quick toolbar
- Canvas area
- Layers Ribbon
- Make keys



Design area description

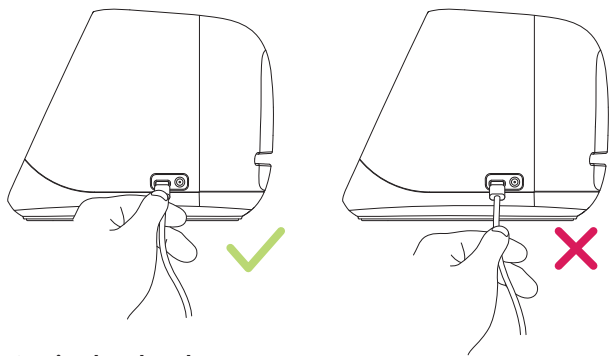
The selected patterns and text will be automatically imported into the design area. The canvas size is only the size of the design area provided in the APP. You can place any fonts, patterns, items, etc. into the design area for adjustment (However, this area does not represent the actual production area of the machine. The exact working area is subject to the pattern size and position in the pad confirmation interface.)

G. Project Production Guidelines Process

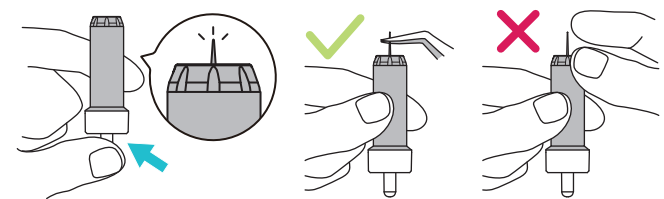
- Design the shapes or graphics you want to design through the canvas in Eprcut App
- After the design is completed, select the project type and click Make in the canvas
- Enter the printing page and select the filament loading type (without backing plate, with backing plate or other)
- Adjust the position and angle of graphic placement in the virtual cutting pad area
- Wait for the device to connect or select the machine model you need to work on or the corresponding Bluetooth machine
- Select the type of consumables you are making. **If the initial type is not available, please click "More" to select the type of consumables.**
- Confirm whether the accessories are those used for the project type, and place the consumables into the machine guide slot for identification.
- After the recognition is completed, click Start and wait for the project to be completed.

H. Precautions for use

- When unplugging the power cord or device cable from the fuselage, please pull it out at the plug connection. **Do not pull out through the middle part of the cable.**

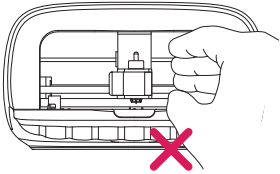


- Cutting head replacement:** When replacing the blade of the knife holder, please grab the shell of the knife holder and press the protrusion on the back of the shell to raise the blade to expose the blade. It is recommended to use tweezers to hold the blade part to take it out or place it. Avoid grabbing the blade part with your hands and being caught by the blade. scratched.

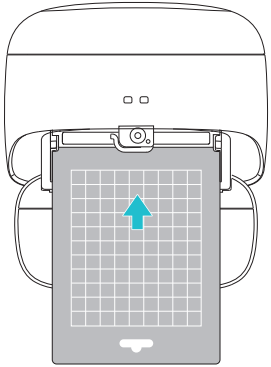


12 When replacing the blade or storing the blade, keep it away from children under 12 years old to avoid scratches or other injuries caused by swallowing due to children's curiosity.

3 Note on pinching hands:
When the machine is operating, do not place your hands in the moving area of the functional clamp and be careful that children put their hands into the moving area, which may cause accidental injuries.



4 When placing the pad, please follow the direction of the guide icon on the cutting pad and place it into the guide groove of the machine.



5 When the machine is not in use for a long time, it is recommended to disconnect the power and close the front cover of the machine. In dusty areas, it is recommended to use a dust cover to protect the machine from dust.

6 Cleaning notes:
If the surface of the machine needs to be cleaned, soak a towel with soapy water and wring out most of the water so that the towel is slightly damp but not dripping. Then you can wipe the easily accessible parts of the machine as needed.
(Please use a towel or paper towel to wipe the remaining water traces after wiping the wiping position to avoid internal malfunctions of the machine caused by remaining water droplets or water marks.)

Note: Do not dismantle, clean or disassemble the internal structure of the machine without permission to avoid damage or rust due to disassembly (the machine will lose warranty service if the machine is damaged or malfunctions due to personal reasons such as unauthorized disassembly.)

I. Eprcut account membership

There are different account types set up in the Eprcut App. In addition to ordinary users, there are also Eprcut account members. This member can use additional patterns or text. This permission function can satisfy more of your design ideas and projects.

J. Service and support

Official website address:
<https://www.eprcut.com/>

Customer Service:
If you have any questions or issues regarding product use, please feel free to contact customer service

support@eprcut.com

FCC INFORMATION (U.S.A.)

FCC Compliance Statement :
This device complies with Part 15 of the FCC Rules. Operation is subject to the following two conditions: (1) This device may not cause harmful interference, and (2) this device must accept any interference received, including interference that may cause undesired operation.

FCC WARNING:
This equipment has been tested and found to comply with the limits for a Class B digital device, pursuant to Part 15 of the FCC Rules. These limits are designed to provide reasonable protection against harmful interference in a residential installation. This equipment generates, uses and can radiate radio frequency energy and, if not installed and used in accordance with the instructions, may cause harmful interference to radio communications. However, there is no guarantee that interference will not occur in a particular installation. If this equipment does cause harmful interference to radio or television reception, which can be determined by turning the equipment off and on, the user is encouraged to try to correct the interference by one of the following measures:

- Reorienting or relocating the receiving antenna.
- Increasing the separation between the equipment and receiver.
- Connecting the equipment to an outlet that is on a different circuit than the radio or TV.
- Consulting the dealer or an experienced radio/TV technician for help.

FCC Caution :

- Any changes or modifications not expressly approved by the party responsible for compliance could void the user's authority to operate this equipment.
- This product satisfies FCC regulations when shielded cables and connectors are used to connect the unit to other equipment. To prevent electromagnetic interference with electric appliances, such as radios and televisions, use shielded cables and connectors for connections.

FCC Radiation Exposure Statement :
This equipment complies with FCC radiation exposure limits set forth for an uncontrolled environment. This equipment should be installed and operated so there is at least 8 inches (20 cm) between the radiator and your body. This device and its antenna(s) must not be co-located or operated in conjunction with any other antenna or transmitter.

ISED NOTICE (Canada)

This device contains licence-exempt transmitter(s)/receiver(s) that comply with Innovation, Science and Economic Development Canada's licence-exempt RSS(s). Operation is subject to the following two conditions: 1. This device may not cause interference. 2. This device must accept any interference, including interference that may cause undesired operation of the device.


This equipment complies with ISED radiation exposure limits set forth for an uncontrolled environment and meets RSS-102 of the ISED radio frequency (RF) Exposure rules. This equipment should be installed and operated keeping the radiator at least 20cm or more away from person's body.

Cet appareil contient un émetteur (S)/ récepteur (S) exempté (S) de licence qui est conforme aux RSS(S) exemptés (S) de licence d'innovation, Science et développement économique Canada. Le fonctionnement est soumis aux deux conditions suivantes: 1. Cet appareil ne peut pas causer d'interférences. 2. Cet appareil doit accepter toute interférence, y compris les interférences qui peuvent causer un fonctionnement indésirable de l'appareil.

Cet équipement est conforme aux limites d'exposition aux rayonnements ionisants fixées pour un environnement non contrôlé et répond à RSS-102 des règles d'exposition aux rayonnements ionisants (RF). Cet équipement devrait être installé et utilisé en gardant le radiateur au moins 20cm ou plus loin du corps de la personne.

European Union

Information for users on collection and disposal of old equipment:

 These symbols on the products, packaging, and/or accompanying documents mean that used electrical and electronic products should not be mixed with general household waste.

These symbols are only valid in the European Union. If you wish to discard these items, please contact your local authorities or dealer and ask for the correct method of disposal.

For more information about collection and recycling of old products, please contact your local municipality, your waste disposal service or the point of sale where you purchased the items.

Type of wireless	Radio Frequency	Maximum Output Power (EIRP)
Bluetooth	2400 ~ 2483.5 MHz	6.0 dBm

SIMPLIFIED EU DECLARATION OF CONFORMITY

 Hereby, Hunan Wusi Technology Co., Ltd. declares that this product is in compliance with Radio Equipment Directive 2014/53/EU. The full texts of the EU declaration of conformity is available at the following internet address: <https://www.eprcut.com>