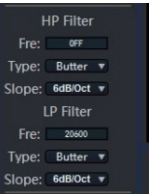


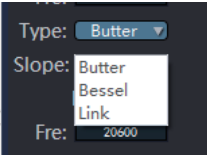


This interface show the main GEQ & PEQ display by tuning 15 bands EQ parameters you can reset and bypass those parameters,and there are some useful parameters like Freq,Q, Gain,which clearly and accurately display.

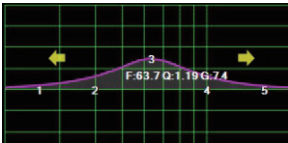
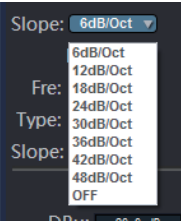
- a. You can tuning the high pass and low pass filter by HPS/LPS ,each channel is equipped with high pass filter and low pass filter.
- d. When you press PEQ, you can tuning the EQ by drag or pull the points any of 1~15.



b. Filter types:butterworth,bassel and linkwitz-riley



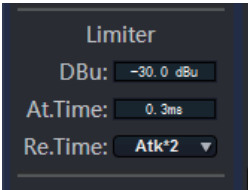
c. The range of slope of filter (slope) is 6dB/Oct ~48dB/Oct,and the resolution is 6dB/oct



e. When you press GEQ, you can tuning the EQ by detail parameters you manually set it



f. limiter is a circuit that allows signals below a specified input power or level to pass unaffected while attenuating (lowering) the peaks of stronger signals that exceed this threshold. Limiting is a type of dynamic range compression. Clipping is an extreme version of limiting. If you not familiar with this function and not know much about it, just let it as default.



This interface you can control the main volume for each channels,phase front left/front right/Rear left/Rear right/Center/Sub.

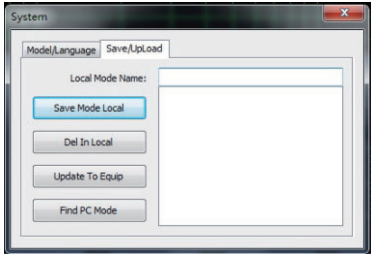
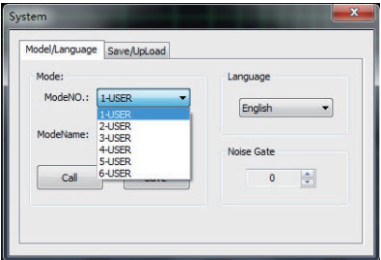
g. you can set all 6 channels time delay parameters separately, you can set the time delay unit CM/MS/inch, usually we recommend you use CM



Choose delay unit:ms/cm/inch
ms:0~20ms
cm:0~692cm
inch:0~272.44inch

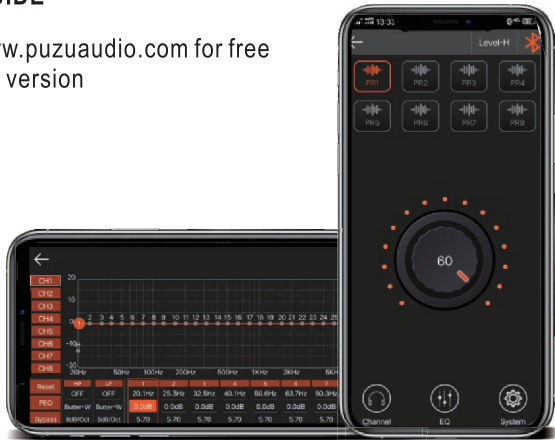


Most importantly, please save tuning parmeters to 1-USER ~6-USER when you finish sound tuning every time. if you have local pc file saved before, just press the load button to upload the file.



PZ-C7 ANDROID APP USER'S GUIDE

Download Android apk file from www.puzuaudio.com for free
PZ-C7 built in double bluetooth 5.0 version



INSTALLATION STEPS OF ANDROID APP



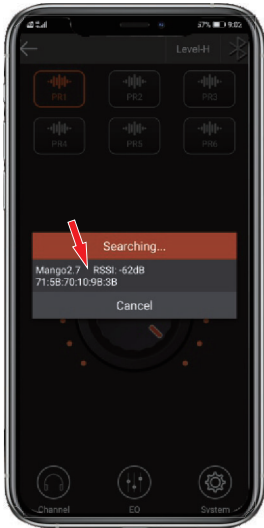
Step1: Press PZ-C7 ICO



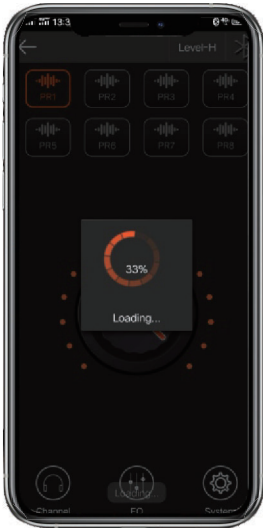
Step2: Press bluetooth logo



Step3: allow the app open your bluetooth



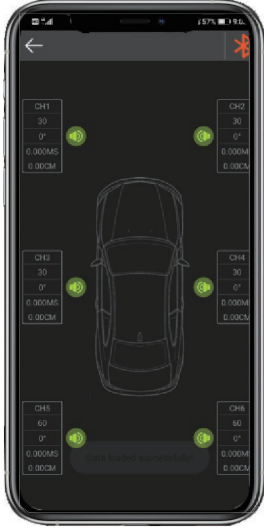
Step4:When it appear Mango2.7, Press the words.



Step5:Waiting loading the date



Step6:Success



Chanel:Press Channels ico
You will see the interface,you can set each channel's Gain/Phase/Time delay/Open/close volume.



Link:Press the “system” button you can set the link channel function CH1&CH2 CH3&CH4, CH5&CH6,



Presets Mode:You can select PR1 ~ PR8,save and selection,for example, if you finished sound tuning you can save to any one of them.



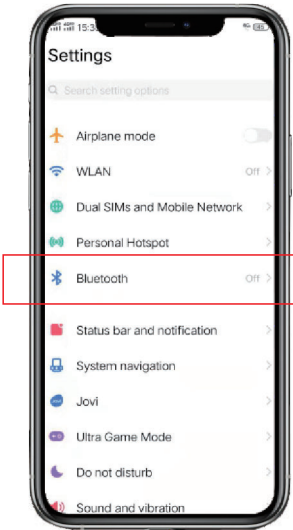
EQ SETTING:You can separate or group setting CH1~CH6 reset/PEQ,GEQ/Bypass etc functions.



TIPS

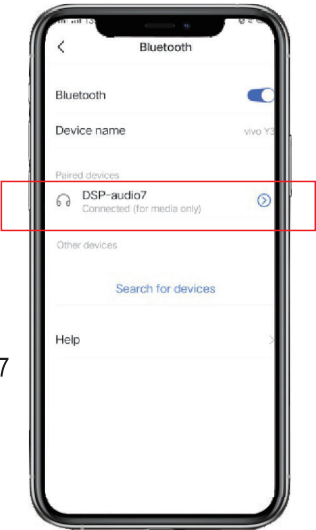
you can use this sound tuning app only by android system phone not support by ios, but you can listen to bluetooth music by both ios and android system smartphone.

- 1.Open your phone setting (ios and android)
- 2.Search DSP-audio*and connect it.



Setep 1.
Open your phone
bluetooth

Setep 2.
Connect DSP-audio7



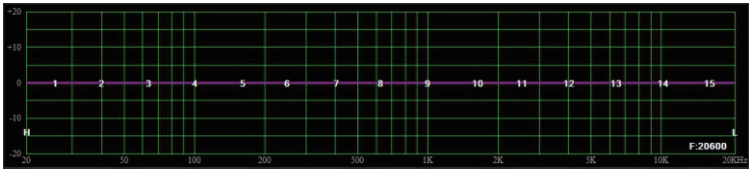
BEFOR USE PUZU PZ-C7SOFTWARE YOU NEED TO KNOW BASIC SOUND PARAMETERS OF DIFFERENT MUSIC INSTRUMENTS PERFORMANCE,SO YOU CAN BETTER UNDERSTAND HOW TO TUNING THE SOUND!

piano	The range 27.5-48.5Hz affects the frequency, the tone becomes thinner as the frequency increases: 20-50Hz provides the peak frequency
Saxophone	600-2Khz affect the brightness, enhance the frequency can make the sound color clear
guitar	improve 100-300Hz can make the sound much more fullness; enhance 2k-5KHz can increase the tone performance
Bass guitar	60-100Hz bass fullness; 60-1KHz impact intensity, 2.5Khz is plectrum audio
electric guitar	240H is the fullness frequency, 2.5KHz is the brightness frequency; plectrum is 3K-4KHz
Electric bass	80-240Hz is fullness frequency; 600-1Khz impact intensity; 2.5KHz is plectrum audio
tambourine	200-240Hz is the resonance frequency; 5KHz affect the presence
Snare drum	240Hz affect fullness; 2KHz impact loudness; 5KHz affect plucked audio
Bass drum	60-100Hz is the bass force frequency; 2.5KHz is the percussion sound frequency
big drum	60-150Hz is the intensity of frequency; affect fullness



TIPS

- Super bass:20Hz~40Hz,
- Bass:40Hz~150Hz,
- Midrange to Bass:150Hz~500Hz,
- Midrange:500Hz~2KHz,
- Midrange toTreble:2KHz~5KHz,
- Treble:7KHz~8KHz,
- Super Treble:8KHz~10KHz,



PZ-C7 DSP AMPLIFIER USER’S GUIDE

Frequency	Lower	Proper	higher
16K-20KHz	The tone lacks of expressiveness	Tone expressive and charm	Strong sense of instability
12K-16KHz	Lost luster	Golden splashes	Hairy, harsh
10K-12KHz	Boring, tarnished	Strong sense of metal	Light noise
8K-10KHz	dull	sound is smooth	sharp
6K-8KHz	dim	Transparent	Tooth sound heavy
5K-6KHz	vague	High definition	sharp
4K-5KHz	the sound is getting far	goodsense of loudness	the sound is getting close
4KHz	blurry	Good Penetration	Cough sound is heavy
2K-3KHz	hazy	Brightness is better	rigid
1K-2KHz	Loose, tone off	good sense of transparency	Jump sense
800Hz	Loose	Strong sense	guttural is heavy
500-800Hz	Shrinkage	The outline of the sound is good	The sound protrudes forward
300-500Hz	Empty sense	Voice power good	Phone sound color
150Hz-300Hz	Soft feeling	Sound intensity feeling good	stiff
100-150Hz	thin	Fullness increased	Turbid “hum”
60-100Hz	Weakness	Strong sense of depth	Low frequency resonance sound appears "hoo"
20-60Hz	emptiness	Good sense of space	Low frequency resonance sound appears "hoo"

PLANNING YOUR INSTALLATION

It’s important that you take the time to read this manual and that you plan your installation carefully,It’s very easy to damage expensive vehicle systems in modern automobiles,Never assume that you have found appropriate wires without consulting a reliable wiring diagram or without performing signal testing with proper test equipment,if you are uncomfortable or unfamiliar with reading diagrams or testing signals,plesae enlist the services of your authorized PUZU Audio dealer to perform the installation,PZ-C7 support universeal DSP cable and No-destructive wiring harness,Plug & Play,easy install it to your car audio system

PZ-C7 DSP AMPLIFIER USER’S GUIDE

SIMPLE FAULT ANALYSIS AND TROUBLESHOOTING

The harness connector does not match the original car	Harness for the car dedicated,please determine your model and the height of the model,and infrom the local dealer or agent
Products in the use of the process of noise	Make sure the host cable is properly connected to check for loosening,After the exclusion is still noise,please check the ground with the original car CD machine shell connection.Still can not be resolved please return to the local dealer or agent.
Work indicator light does not shine,no sound	Please check if the tail has been properly connected, check the original car with or without amplifier or modeified amplifier
The original car host and the machine can’t get power on	Check whether the original power cord is connected, the original car with original car host shell,restore the original car position
there is a "pump" sound when connected the DSP with subwoofer	Plese connect the blue wire of the harness cable to your car subwoofer’s REM plug
All connection well and there is no sound come from speaker after few seconds sound come again from speaker.or there is a “zizizi” or “dididi”sounds come from speaker.	You car with speaker detection function. Solution:Between the 4 high-level input ports of the DSP power amplifier and the 4 high-level output ports of the host, each interface is connected in parallel with a 33 ohm, 10W cement resistor.
DSP can not get power on when choose“Host”start up	switch to “ACC” start up and then connect the red line of the harness cable to your car ACC line
Exist buttom noise come from speaker when play DSP	Eusually it comes from your factory radio.the noise sound source come from it,after it get through DSP, noise is amplified,you can try adjust the buttom“Noise get threshold”from the software by PC computer.

WARRANTY CARD

FCC WARNING

Dear Customer,
Thank you purchased puzu product. To get yourself familiarize with the features and operation of the system. we suggest you to read the operating instruction manual provided along with the set. This warranty card is an assurance that you have purchased the best. Please preserve this card to avail the warranty service during the unlikely even of any problem.

Warranty:
Your puzu car audio system/Accessory is fully guaranteed against manufacturing defect or material defect for the period of 12(twelve) months from the date of sales. Satisfying the terms & conditions given below. Equipment in the need of services should be referred to the authorized puzu dealer.

Warranty Terms & Conditions:
Warranty will be entertained only when this card and original invoice or the sales receipt (as proof of the date of purchase, model, serial no. and the dealer's name is presented together with the product under complaint.
Warranty does not cover damage to puzu equipments caused by accident, misuse, repairs, additions and modifications carried out by unauthorized dealers or if tampered in any other manner.
Warranty will not apply if the type or serial number on the product has been altered, deleted, removed or made illegible.
This warranty does not cover the cabinetry and any appearance item, user attached antennas, any damage to recordings or recording tapes or disc, damage due to lightning or due to power surges.
This warranty does not cover problem due to improper installation, setup adjustment and signal reception problems.
We reserve the right to refuse warranty service if the above terms and conditions are violated.

THIS WARRANTY DOES NOT COVER DAMAGE TO PUZU EQUIPMENT CAUSED BY USAGE OF INFERIOR QUALITY WIRING KIT/DAMAGED CASSETTE OR CD.

This device complies with part 15 of the FCC Rules. Operation is subject to the following two conditions:
(1) this device may not cause harmful interference, and
(2) this device must accept any interference received, including interference that may cause undesired operation.
Any changes or modifications not expressly approved by the party responsible for compliance could void the user's authority to operate the equipment.
NOTE: This equipment has been tested and found to comply with the limits for a Class B digital device, pursuant to Part 15 of the FCC Rules. These limits are designed to provide reasonable protection against harmful interference in a residential installation. This equipment generates, uses and can radiate radio frequency energy and, if not installed and used in accordance with the instructions, may cause harmful interference to radio communications. However, there is no guarantee that interference will not occur in a particular installation. If this equipment does cause harmful interference to radio or television reception, which can be determined by turning the equipment off and on, the user is encouraged to try to correct the interference by one or more of the following measures:
-- Reorient or relocate the receiving antenna.
-- Increase the separation between the equipment and receiver.
-- Connect the equipment into an outlet on a circuit different from that to which the receiver is connected.
-- Consult the dealer or an experienced radio/TV technician for help.
To maintain compliance with FCC's RF Exposure guidelines, This equipment should be installed and operated with minimum 20cm distance between the radiator and your body: Use only the supplied antenna.

**WARRANTY CARD-SPEAKER
AMPLIFIER/SUWOOFER
ACCESSORIES**



Please demand the below portion is filled by the dealer and given to you.

MODE: DATE OF PURCHASE:

SERIAL NO.:

DEALER'S STAMP:

PUZU[®]AUDIO
WARRANTY VOID WITHOUT THIS CARD

PUZU®

—— Inspired Driving ——

HUIZHOU SHANGSHUI TECHNOLOGY CO.,LTD

3F,Dinsheng Technology Industrial Zone,Pingnan,ZhongKai,HuiZhou GD,CHINA.516006

Designed by USA,Made in China

www.puzuaudio.com

RoHS

CE

FC

