



PZ-C7



SCAN TO DOWNLOAD SOFTWARE

소유자의 설치 설명서

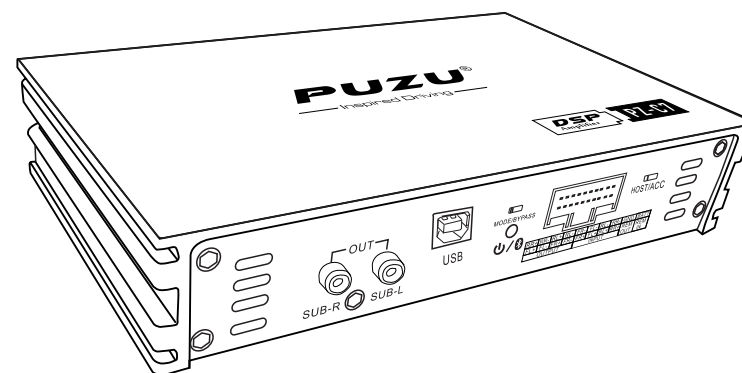
OWNER'S MANUAL&INSTALLATION MANUAL
РУКОВОДСТВО ПО ЭКСПЛУАТАЦИИ И УСТАНОВКЕ

PZ-C7 DSP AMPLIFIER USER'S GUIDE

● INTRODUCTION

Congratulations on you purchased of the PUZU PZ-C7 DSP amplifier. The high speed digital signal processor amplifier was designed in the united states with sound quality that exceeds that many conventional class D designs while offering stunnig efficiency.

When installed and configured properly this PZ-C7 DSP Amplifier will bring a new level of realism and impact to your mobile entertainment system. To get the best performance from your DSP amplifier PUZU recommends that you have this amplifier installed and configured by an experienced professional.



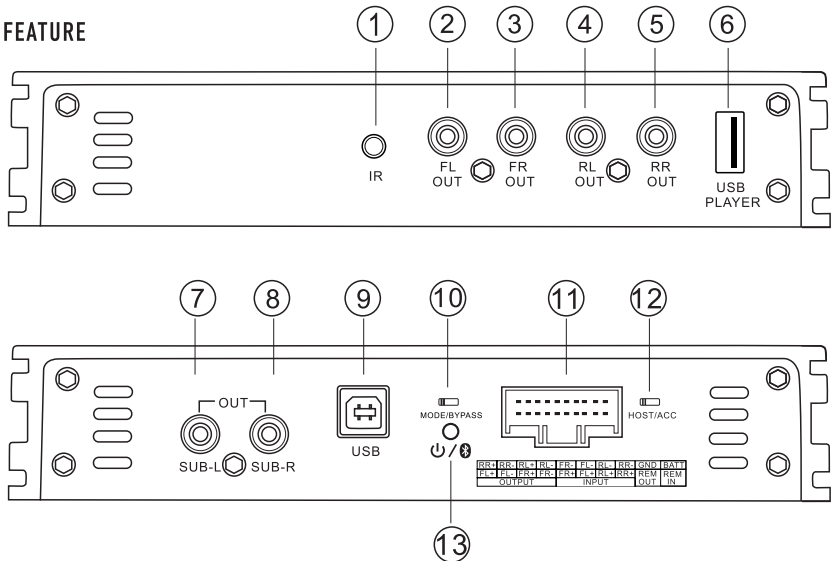
● ABOUT THE MANUAL AND WARRANTY

This manual describes the basic requirements to install PUZU PZ-C7 DSP amplifier, the installation and configuration of this amplifier can be complex. If you do not possess the the necessary knowledge, experience and/or tools to perform this installation please contact your local authorized PUZU dealer to arrange for professional installation. Keep all instructions and your sales receipt for future reference and warranty purpose.



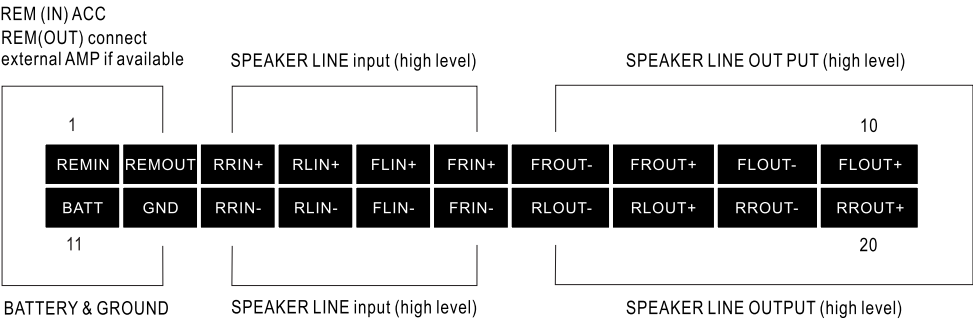
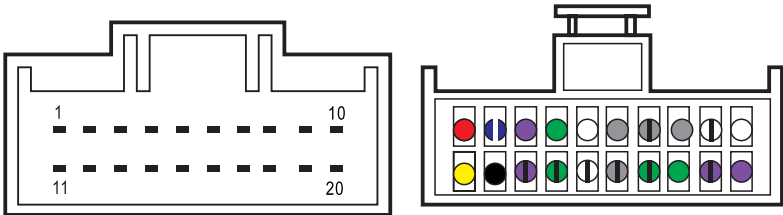
WARNING

PUZU products are capable of producing high sound pressure level that can damage your hearing and make it difficult for the driver to hear other cars or emergency vehicles. PUZU wants you as a customer for life-please be responsible at all times when enjoying your audio system. PUZU takes no responsibility for any personal injury. Loss or damage associated with the use, or miss-use of this product. Please refer to the included warranty statement for details.



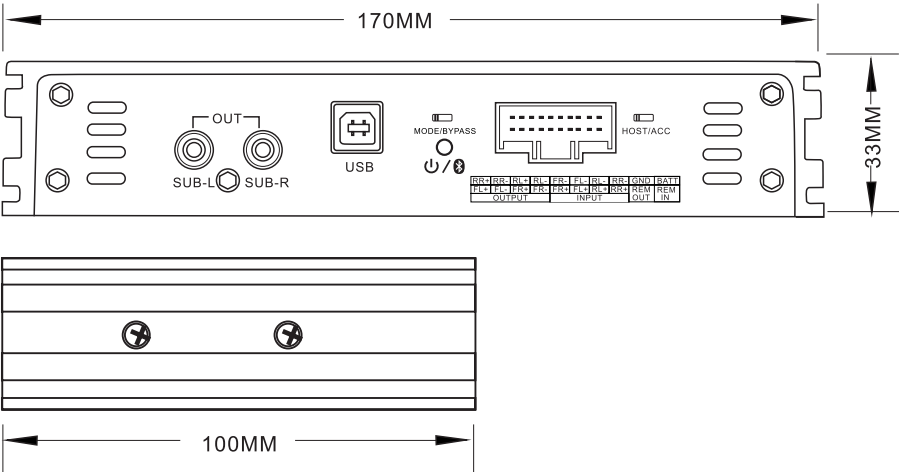
- ① **IR remote controller receiver slot** (Remote controller is optional)
- ② ~ ⑤ **RCA output** (FL,FR,RL,RR)
- ⑥ **USB PLAYER**(Play USB music)
- ⑦ **SUBWOOFER OUTPUT (L)** voltage output:2V RMS
- ⑧ **SUBWOOFER OUTPUT (R)** voltage output:2V RMS
- ⑨ **USB for connection of PC software** (data cable connection)
- ⑩ **MODE/BYPASS** (This button for comparasion and test,put it in MODE side, DSPintervention status,if put the button in BYPASS side,then you hear the sounds directly from radio)
- ⑪ **POWER CABLE HARNESS CONNECTOR**

PIN Definition as follows



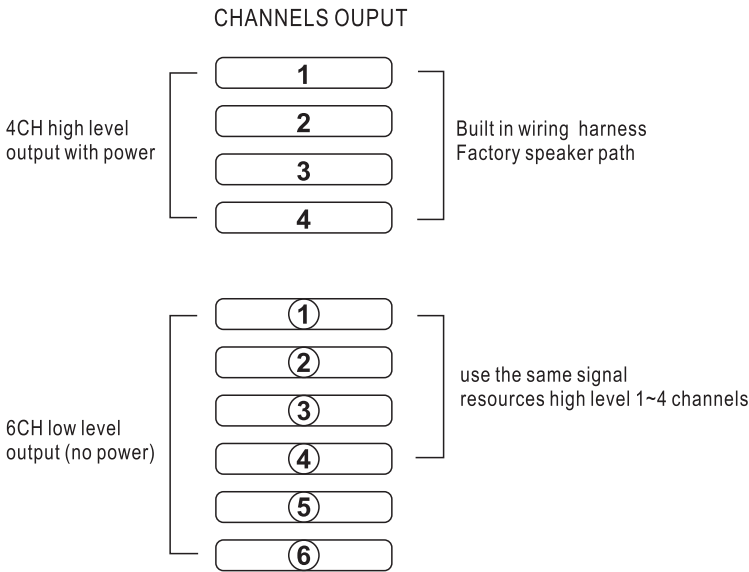
- ⑫ **HOST/ACC** This button is DSP star way,please put it in HOST (high level) side as default,it means DSP start with DC signal,usually 6V from car radio.if you can not operate DSP by HOST please try ACC,this means your car start by REM,some car with KEYLESS GO use this way.
- ⑬ **STATUS LIGHT** (When you right connect the unit,the red light blinking as default, when you playing bluetooth or USB,the light turns to be blue)

PRODUCT SIZE

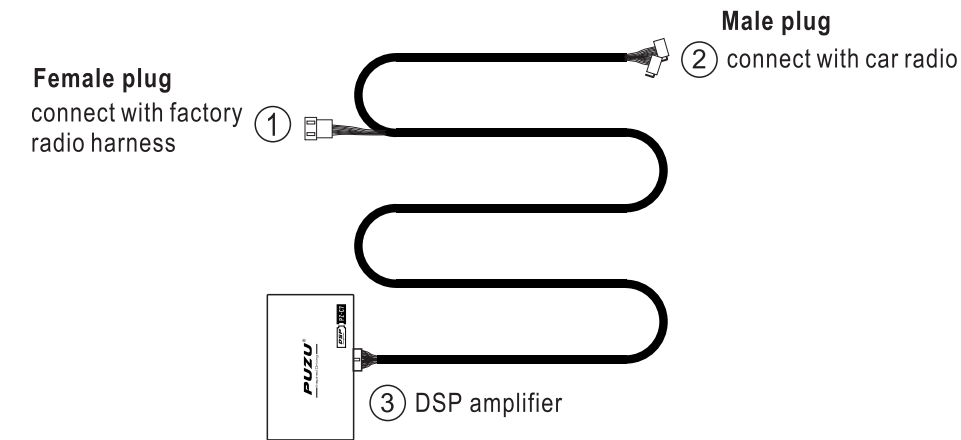


PZ-C7 overcomes inherent acoustical anomalies within vehicles to develop a well-balanced response and proper sound stage even from a factory head unit. Customize your system with the 15-bands EQ and make precise adjustments to the detailed high/low crossovers and expansive time correction for each of the 6 channels. Easily control PZ-C7 via an android smartphone connection or wired connection to your PC, either way, you get fast, real-time results. The versatile PZ-C7 can be used with a factory system or other after market head unit.

Diagram of the relationship between the input and output channels of the PZ-C7



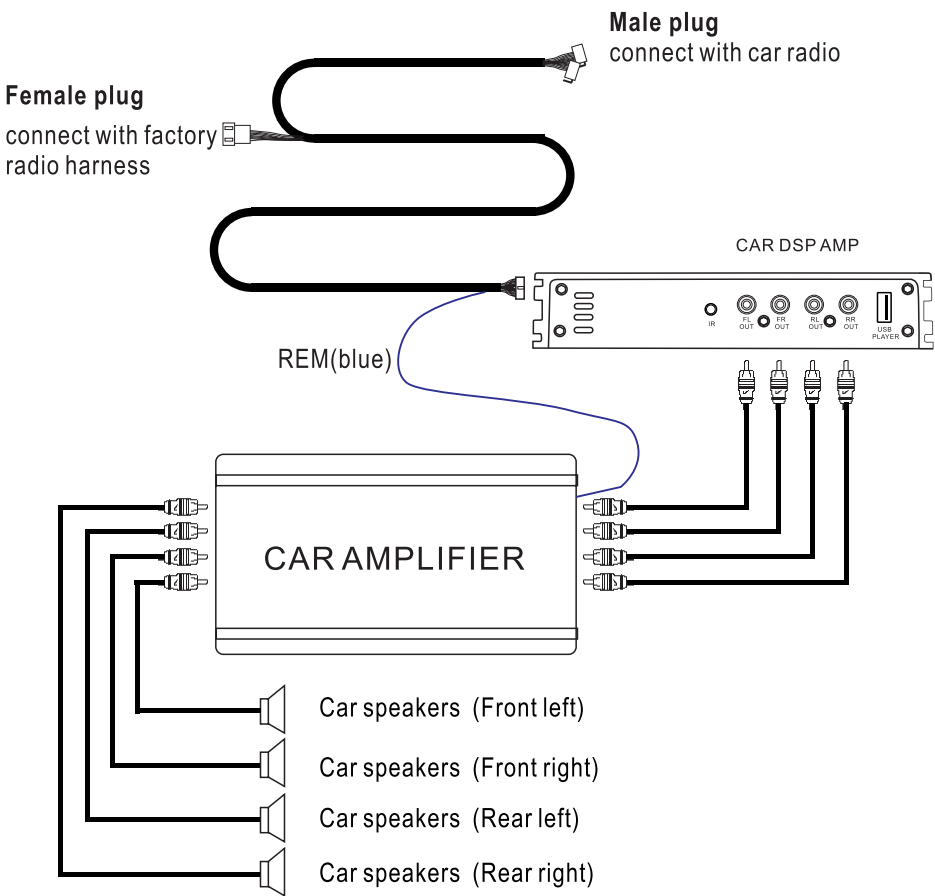
● ABOUT CONNECTION &DIAGRAM
BASIC CONNECTION



⚠ PUZU Car DSP Amplifier harness with 3 terminals, Connect ① with your factory radio harness, connect ② with your car radio, and connect terminal ③ to PUZU Car DSP Amplifier.

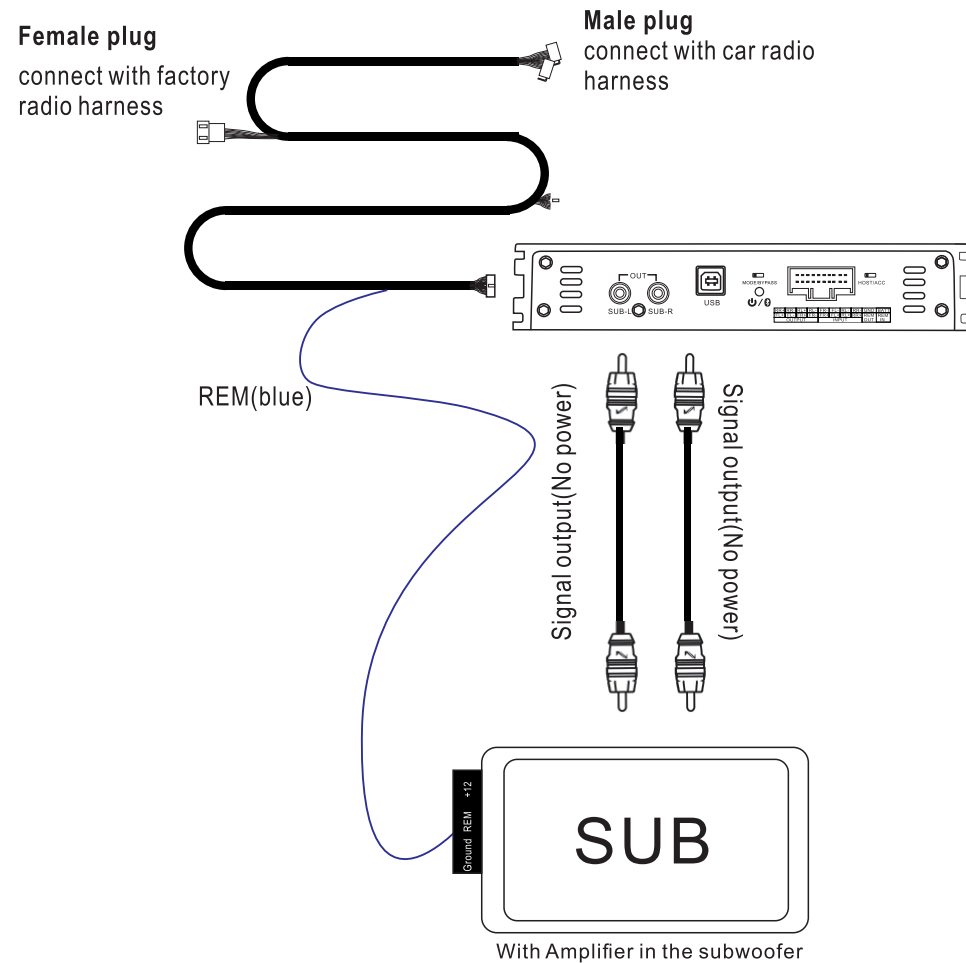
- DSP Amplifier use the same power source with your car radio.
- You can use PUZU DSP amplifier cable directly plug with your factory radio. If you changed your car radio to an after market headunit, then you need an adaptor.
- PZ-C7 with 4 channels high level input and 4 channels high level output and 6 channels low level (RCA) output. with complete 6X15 bands EQ separately control.

● YOU CAN USE THE SOLUTION 2 AS FOLLOWS
HIGH LEVEL INPUT WITH LOW LEVEL (RCA) OUTPUT
(NEED EXTRA AMPLIFIER)



⚠ Please connect the separate blue wire (control line) to your extra amplifier REM.

- YOU CAN USE THE SOLUTION 3 AS FOLLOWS
USE PZ-C7 UPGRADE YOUR 4 DOOR SPEAKERS+ACTIVE SUBWOOFER



⚠ Please connect the separate blue wire(control line) to your subwoofer amplifier REM

PUZU PZ-C7 SOFTWARE USERS GUIDE

Thank you for choosing PUZU for your Car Audio system and for sharing our philosophy. PUZU PZ-C7 Car DSP Amplifier software with the best PUZU technology in terms of digital signal processing (DSP)+built in amplifier.

Before reading this manual and considering using this software,first make sure the product installed correctly.Refer to the specific user's manual of the product if necessary. In order to obtain the best results,we recommend you have your PUZU PZ-C7 installed by Your PUZU dealer.

⚠ WARNING

SOFTWARE COMPATIBILITY

PC:Windows XP/Vista/Win7/8/10

The maximum resolution of the software 1024X768

RECOMMENDED MINIMUM REQUIREMENTS

Operating system:Windows XP,Windows Vista,Windows 7,Windows 8,Windows10

Processor:1.67GHz,equivalent or more

RAM:1GB or more

Hard drive:512MB or more free space

Display:1024X768 or more

⚠ SOFTWARE INSTALLATION WARNING

Before connecting your PUZU PZ-C7 software,close all open programmes, connect DSP with PC by USB date cable,allow your PC auto install the hard ware of the USB date cable.Open the software,the installation process running automatically.If you encounter any problems,please uninstall the software and download the newest software from www.puzuaudio.com

If you can not success install the software after try more times,please mail to market@puzuaudio.com for futher help.

After you installed the software,you can see the main interface as follow picture.

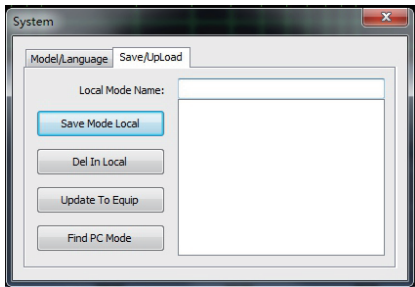
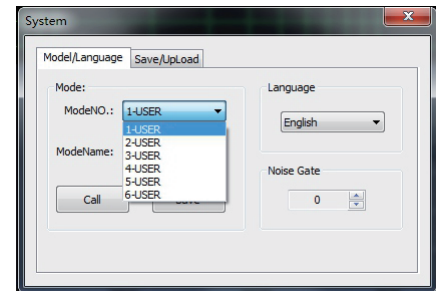


Machine connections & file load

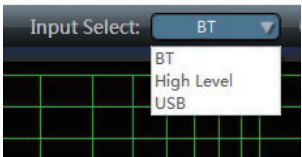
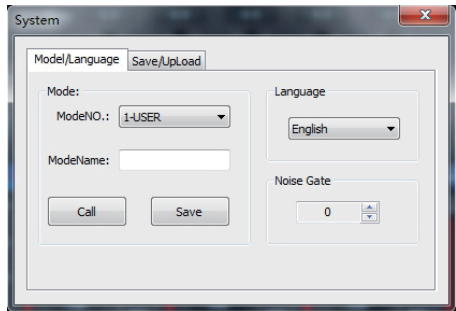
1.The interface will show [connecting] before connecting to the machine and show[connected] if the software has been successfully connected.



2.You can save the tuning sound datas to built in modes 1~6,or you can save to your local PC,so that you can directly upload the files if you meet the same car and same audio system next time.



3.You can change system language Chinese/English.
4.Share your tuning parameters to other audio system which with the same speaker paramaters and car models.



4.Types of sound sources are available for selection:Bluetooth,high level,and USB,the software set hi level as default.

5.Set a noise Gate,if the input signals is higher than the gate,it could be entered normally,otherwise,it will be blocked.If the gate is set reasonably,the machine will be automatically muted when the system has no signal inut,so as to make system output quieter,adjustment range:0~20.

6.select type of sound source from the drop down list.

Channel joint

You can joint the channels:Grouping Front (1&2 channels)
Grouping rear(3&4 channels),Grouping all,and Grouping Bass

