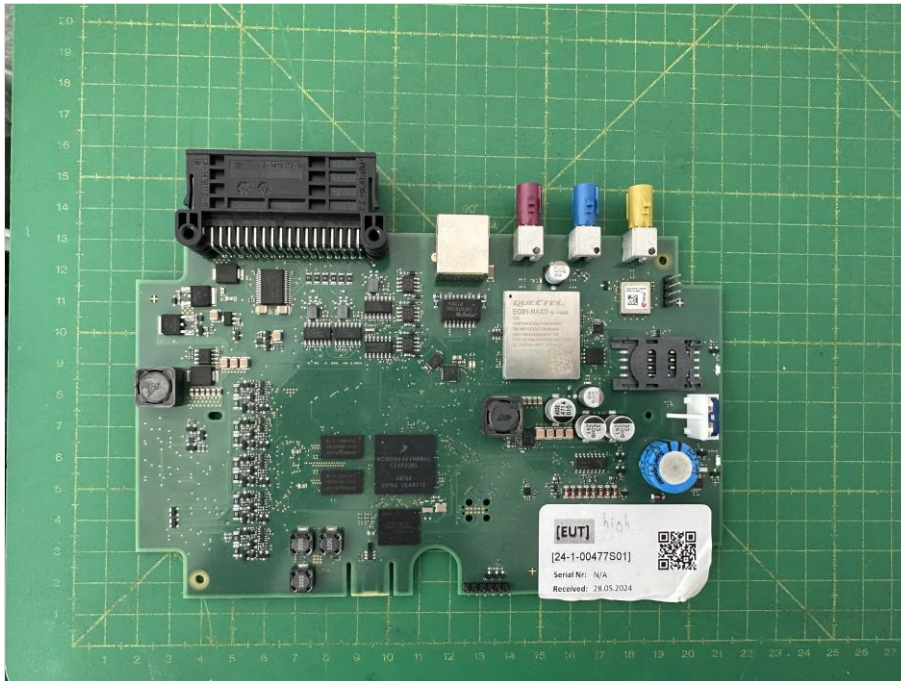


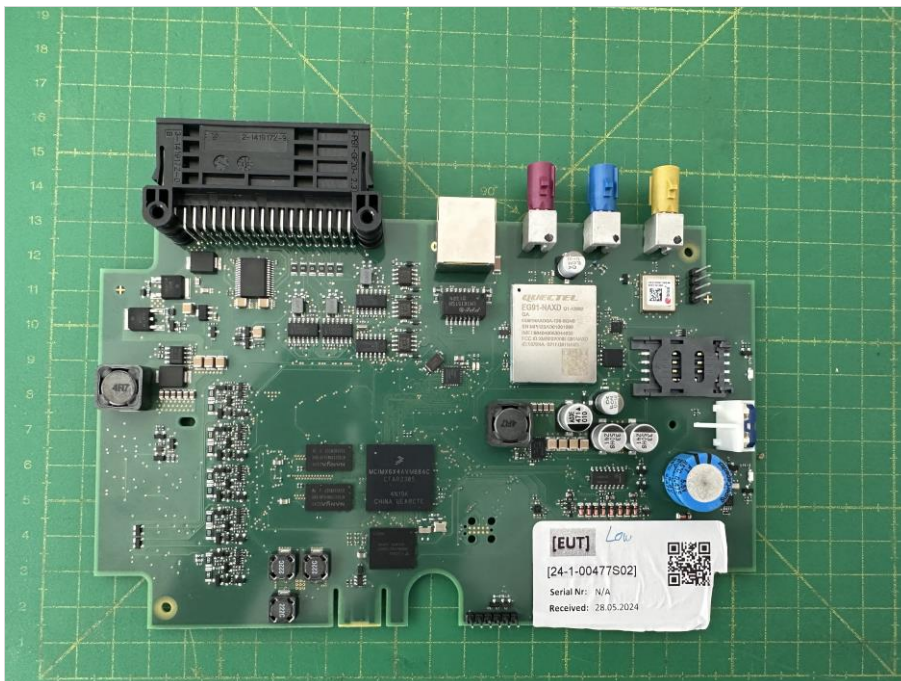
## Annex 3: External photographs 24-1-0047701T001-TR1-A101-R01

<b>Number of pages:</b>	4	<b>Date of Report:</b>	2024-Jul-26
<b>Testing company:</b>	cetecom advanced GmbH Untertuerkheimer Str. 6-10 66117 Saarbruecken GERMANY	<b>Applicant:</b>	RAFI GmbH & Co. KG
<b>Product:</b> <b>Model:</b>	BLE low energy MCU Assembly Bluetooth Modul		
<b>FCC ID:</b>	2BESPSCU101916	<b>IC:</b>	32248-101916SCUNA
<b>Testing has been carried out in accordance with:</b>	FCC Regulations Title 47 CFR, Chapter I Subpart C Intentional Radiators § 15.247 Operation within the bands 2400-2483.5 MHz  ISED-Regulations Radio Standards Specification RSS-Gen, Issue 5 General Requirements for Compliance of Radio Apparatus RSS-247, Issue 3 Digital Transmission Systems (DTSS)		

## External photographs (EUT/DUT)



Photograph 1: EUT 1\_Top side view



Photograph 2: EUT 2\_Top side view



Photograph 3: EUT 3\_Top side view

## External photographs of Accessories



Photograph 4: AE 1





**Photograph 5: CAB 1**

**End Of Annex 3**