

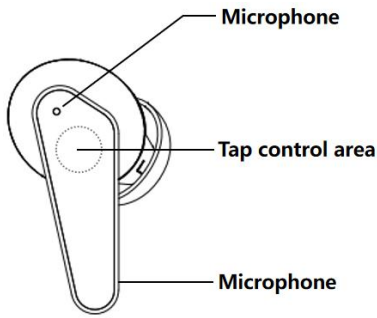
Basic Operation of the Hearing Aids

(1) Hearing aid activation

When put in ear, the hearing aids will be activated automatically.

(2) Conversation mode

Tap the hearing aids touch area twice to activate or deactivate the conversation mode.



Product Specifications

Product Name	Lyray OTC hearing aids
Product Model	LT0010
Input/Output Power	Input：5V=500mA Output：5V=120mA
Bluetooth Version	Bluetooth 5.0
Usage Time	8hrs (6hrs in Bluetooth mode)
Power Connection Type	TYPE-C USB
OSPL90	OSPL90-PEAK：112 dB OSPL90-HFA：108 dB
FOG50	FOG50-PEAK：42 dB FOG50-HFA：37 dB
THD (Total Harmonic Distortion)	<3%
Noise Reduction	15 dB
Hearing Aids Latency	13 ms
Frequency Range	200Hz-8000Hz

Safety Tips

Warning against use in people younger than 18.

WARNING: If you are younger than 18, do not use this.
You should go to a doctor, preferably an ear-nose-throat doctor (an ENT), because your condition needs specialized care. Over-the-counter hearing aids are only for users who are age 18 or older.

This OTC hearing aid is for users who are 18 and older. People who are younger than 18 with hearing loss should see a doctor, preferably an ENT, because they may need medical testing and management, Hearing loss can affect speech and learning, so professional fitting and continuing care are also important.

WARNING: When to See a Doctor

If you have any of the problems listed below, lease see a doctor, preferably an ear-nose-throat doctor (an NET)

- Your ear has a birth defect or an unusual shape. Your ear was injured or deformed in an accident.
- You saw blood, pus, or fluid coming out of your ear in the past 6 months
- Your ear feels painful or uncomfortable
- You have a lot of ear wax, or you think something could be in your ear
- You get really dizzy or have a feeling of spinning or swaying (called vertigo)
- Your hearing changed suddenly in the past 6 months
- Your hearing changes: it gets worse then gets better again
- You have worse hearing in one ear
- You hear ringing or buzzing in only one ear

WARNING: This hearing aid should not cause pain when inserting it.

Remove this device from your ear if causes pain or discomfort when you insert or place it. To try again, make sure to follow the instructions. If you feel pain or discomfort again, contact the manufacturer. if your pain or discomfort doesn't go away, contact your hearing healthcare professional. You can also report this to FDA as an adverse event according to the instructions that appear later.

Caution: This is not hearing protection.

You should remove this device if you experience overly loud sounds, whether short or long-lasting. If you're in a loud place, you should use the right kind of hearing protection instead of wearing this device. In general, if you would use ear plugs in a loud place, you should remove this device and use ear plugs.

Caution: The sound output should not be uncomfortable or painful.

You should turn down the volume or remove the device if the sound output is uncomfortably loud or painful. If you consistently need to turn the volume down, you may need to further adjust your device.

Caution: You might need medical help if a piece gets stuck in your ear.

If any part of our hearing aid, like the eartip, gets stuck in your ear, and you can't easily remove it with your fingers, get medical help as soon as you can. You should not try to use tweezers or cotton swabs because they can push the part farther into your ear injuring your eardrum or ear canal, possibly seriously.

Note: If you remain concerned, consult a professional

If you try this device and continue to struggle with or remain concerned about your hearing, you should consult with a hearing healthcare professional.

Note: What you might expect when you start using a hearing aid

A hearing aid can benefit many people with hearing loss. However, you should know it will not restore normal hearing, and you may still have some difficulty hearing over noise. Further, a hearing aid will not prevent or improve a medical condition that causes hearing loss.

People who start using hearing aids sometimes nee a few weeks to get used to them. Similarly, many people find that training or counseling can help them get more out of their devices.

If you have hearing loss in both ears, you might get more out of using hearing aids in both, especially in situations that make you tired from listening-for example, noisy environments.

Note: Tell FDA about injuries, malfunctions, or other adverse events.

To report a problem involving your hearing aid, you should submit information to FDA as soon as possible after the problem. FDA calls them "adverse events," and they might include: skin irritation in your ear, injury from the device (like cuts or scratches, or burn from an overheated battery) pieces of the device getting stuck in your ear, suddenly worsening hearing loss from using the device, etc.

Instructions for reporting are available at <https://www.fda.gov/Safety/MedWatch>, or cl 1-800-FDA-1088. You can also download a form to mail to FDA

When using the product, please read the following recommendations to help you comply with the maintenance terms and extend the life of the product.

- Keep the product dry and do not put it in a humid place to avoid affecting the internal circuit of the product.
- Prevents perspiration from penetrating inside the product.
- Do not place the product in a high temperature (e.g. sunlight) or low temperature place. High or low temperatures can shorten the life of electronic parts and batteries and deform some plastic parts.
- Do not attempt to disassemble the product. If non-professional, the product may be damaged.
- Do not drop, shake strongly, or hit the product with a hard object. Do not use aggressive chemicals to clean the product.
- Do not use sharp objects to scratch on the surface of the product to avoid damaging the shell and affecting the appearance.
- If the product does not work properly, please send it to the location where you purchased it, or contact online customer service, the staff will be eager to help you solve the problem.

FCC Caution.

(1)§ 15.19 Labelling requirements.
This device complies with part 15 of the FCC Rules. Operation is subject to the following two conditions: (1) This device may not cause harmful interference, and (2) this device must accept any interference received, including interference that may cause undesired operation.
§ 15.21 Changes or modification warning
Any Changes or modifications not expressly approved by the party responsible for compliance could void the user's authority to operate the equipment.
§ 15.105 Information to the user.
Note: This equipment has been tested and found to comply with the limits for a Class B digital device, pursuant to part 15 of the FCC Rules. These limits are designed to provide reasonable protection against harmful interference in a residential installation. This equipment generates uses and can radiate radio frequency energy and, if not installed and used in accordance with the instructions, may cause harmful interference to radio communications. However, there is no guarantee that interference will not occur in a particular installation. If this equipment does cause harmful interference to radio or television reception, which can be determined by turning the equipment off and on, the user is encouraged to try to correct the interference by one or more of the following measures:
-Reorient or relocate the receiving antenna.
-Increase the separation between the equipment and receiver.
-Connect the equipment into an outlet on a circuit different from that to which the receiver is connected.
-Consult the dealer or an experienced radio/TV technician for help.

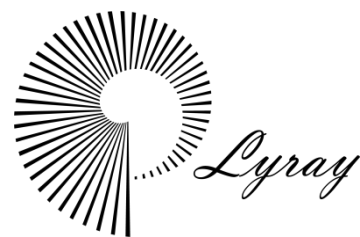
RF warning for Portable device:
The device has been evaluated to meet general RF exposure requirement. The device can be used in portable exposure condition without restriction.

Product Model		SN	
Purchase Channels			
Client Name		Contact Information	
Client Address			
Purchase Date		Invoice Number	

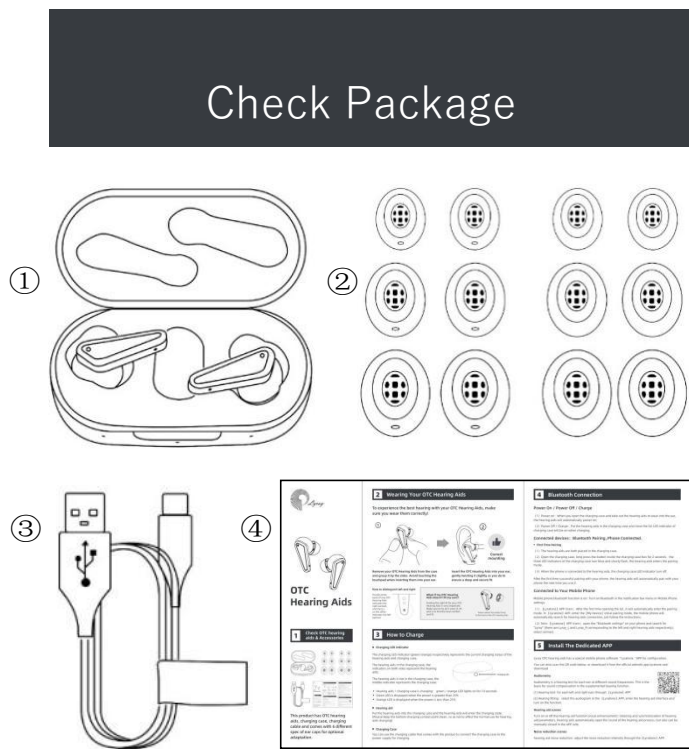
Warranty Period
If the product is non-operational through no fault of the user, during the warranty period, the product can be replaced free of charge within 1 year from the Date of purchase.
However, consumable parts and included parts are excluded from the warranty. Consumable parts: eartips, USB cable.

Warranty Policy		
Warranty Coverage	Warranty Contents	Warranty Period
Hearing aids	Quality issues	1 year
Charging Case	Quality issues	1 year

*Note: Those not in the above list are random supplies, no warranty (or warranty 15 days)
Manufacturer: Lyratone Technologies, Inc.
Address: Building 2, 40 Beiyuan Road, Beijing, P.R. China.
E-mail:service@lyratone.net
Tel: (+86) 010-53390360
Trademark and appearance description: Lyray™ text, icons, pictures, headset product appearance are registered by Lyratone Technologies, Inc. Counterfeit will be investigated.



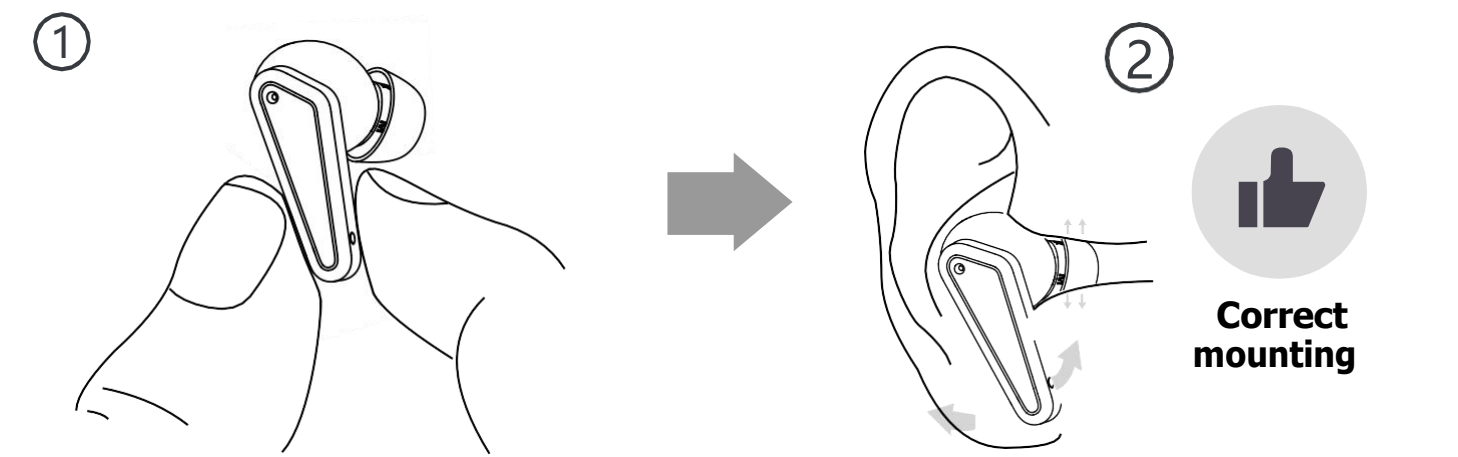
OTC Hearing Aids



The package includes:
① hearing aids and charging case;
② 6 different sizes pairs of ear tips for selection;
③ charging cable;
④ user manual.

Wearing Your OTC Hearing Aids

To experience the best hearing please make sure you wear them correctly!



Take your OTC hearing aids from the case and hold them by the side. Avoid touching the touchpad when inserting them into your ear.

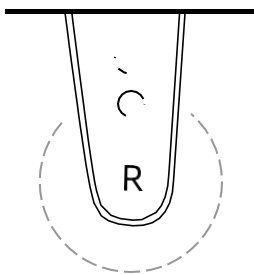
Insert the OTC hearing aids into your ear, twisting slightly to ensure a deep and secure fit.

How to tell left or right side of earbuds

See the letters at the end of hearing aids.

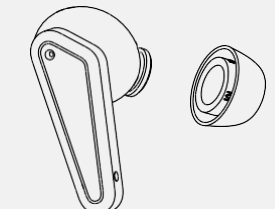
[L] for the left side.

[R] for right side



What if my OTC hearing aids doesn't fit my ears?

Try all 3 sizes (S, M, and L) to find the best comfort and fit.



Please attach the eartip firmly to OTC hearing aids

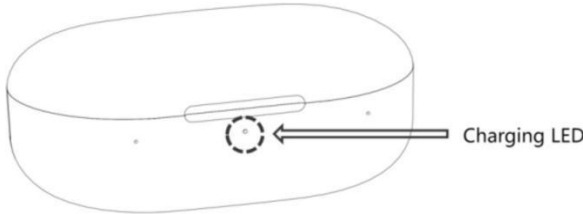
How to Charge

● Charging LED indicator

The charging LED indicator represents the current charging status of the hearing aids and charging case.

1) When the hearing aids in the charging case, the LED on both sides represent the hearing aids power status.

2) The hearing aids is not in the charging case, the middle indicator represents the charging case power status.



● LED color legend

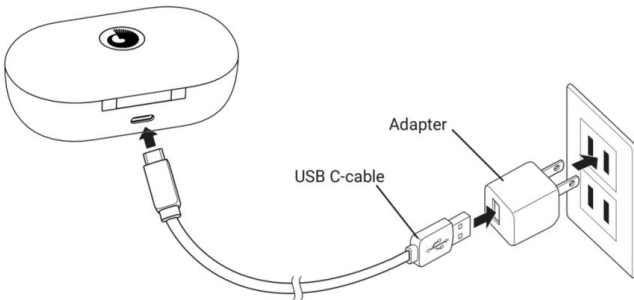
- Hearing aids / charging case is charging : green / orange LED lights on for 10 seconds
- Green LED: the power is greater than 25%
- Orange LED: the power is less than 25%

● Hearing aid

Put the hearing aids into the charging case and the hearing aids will enter the charging state.

● Charging Case

You can use the charging cable that comes with the product to connect the charging case to the power supply for charging.



Bluetooth Pairing

Power On / Power Off / Charge

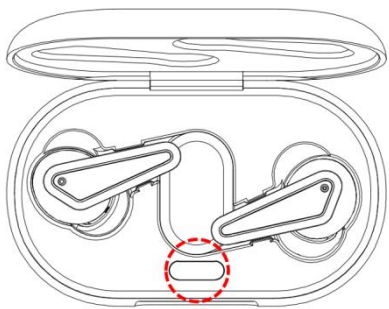
(1) Power on: When you open the charging case and take out the hearing aids to put into the ear, the hearing aids will automatically power on ;

(2) Power off/charge: Put the hearing aids in the charging case and close the lid. LED indicator of charging case will be on when charging.

1) Initial Bluetooth Pairing

● First Time Pairing

- (1) The hearing aids are both placed in the charging case.
- (2) Open the charging case, long press the button inside the charging case box for 2 seconds, the three LED indicators of the charging case turn blue and slowly flash, the hearing aids enters the pairing mode.



- (3) When the phone is connected to the hearing aids, the charging case LED indicator turn off.

After the first time successful pairing with your phone, the hearing aids will automatically pair with your phone the next time you use it.

2) Connecting to Mobile Phone

- (1) Before pairing, make sure Bluetooth function on in mobile phone settings.
- (2) Open the "Bluetooth settings" on your phone and search for "Lyray" select connect.

Install Lyray APP

Lyray OTC hearing aids has a own mobile phone APP "Lyray" for configuration. Several ways to download the APP.

- (1) Search Lyray APP from your phone's App stores.
- (2) Scan the QR code on right side
- (3) Download from the official website: app.lyratone.net/download/lyray



Audiogram

Audiometry is a hearing test for each ear at different sound frequencies. This is the basis for sound compensation in the supplemental hearing function.

- (1) Hearing test: for each left and right ears through Lyray APP
- (2) Hearing fitting: select the audiogram in the Lyray APP, enter the hearing aid interface and turn on the function.

Noise reduction scenes

Hearing aid noise reduction: adjust the noise reduction levels through the Lyray APP.

FCC Requirement

changes or modifications not expressly approved by the party responsible for compliance could void the user's authority to operate the equipment.

This device complies with Part 15 of the FCC Rules. Operation is subject to the following two conditions:

- (1) this device may not cause harmful interference, and
- (2) this device must accept any interference received, including interference that may cause undesired operation.

Note: This equipment has been tested and found to comply with the limits for a Class B digital device, pursuant to Part 15 of the FCC Rules. These limits are designed to provide reasonable protection against harmful interference in a residential installation. This equipment generates, uses, and can radiate radio frequency energy, and if not installed and used in accordance with the instructions, may cause harmful interference to radio communications. However, there is no guarantee that interference will not occur in a particular installation. If this equipment does cause harmful interference to radio or television reception, which can be determined by turning the equipment off and on, the user is encouraged to try to correct the interference by one or more of the following measures:

- Reorient or relocate the receiving antenna.
- Increase the separation between the equipment and receiver.
- Connect the equipment into an outlet on a circuit different from that to which the receiver is connected.
- Consult the dealer or an experienced radio/TV technician for help.