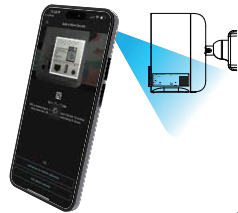


Scan the QR Code

While logged into the app, use your smart device's camera to scan the QR code on the camera.

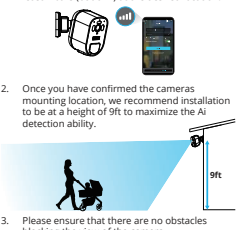
The app will then walk you through the remaining steps needed to connect your camera.



9

Battery Camera Installation

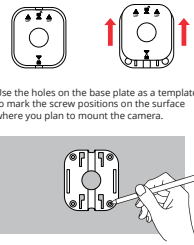
1. For best results, verify a strong Wi-Fi signal before outdoor installation. Connect to your phone's Wi-Fi and ensure a signal strength of at least 2 bars (out of 4) at the desired location.
2. Once you have confirmed the cameras mounting location, we recommend installation to be at a height of 9ft to maximize the Ai detection ability.
3. Please ensure that there are no obstacles blocking the view of the camera.



10

Battery Camera Installation (Continued)

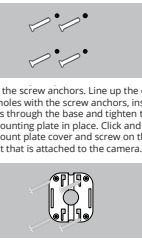
1. Remove the back mounting plate by sliding the plate in the direction of the arrows shown on the mount.
2. Use the holes on the base plate as a template to mark the screw positions on the surface where you plan to mount the camera.



11

Battery Camera Installation (Continued)

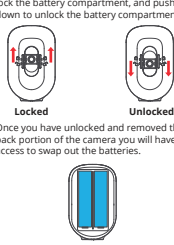
3. Using a drill bit slightly smaller than the included screw anchors, drill into the mounting surface using the guide marks.
4. Insert the screw anchors. Line up the camera base holes with the screw anchors, insert the screws through the base and tighten to secure the mounting plate in place. Click and secure the mount plate cover and screw on the camera mount that is attached to the camera.



12

Changing the Batteries or Charging

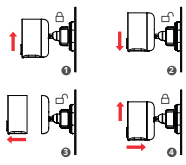
1. To swap out the batteries, follow the icons shown on the back of the battery camera to open the battery compartment. Push up to lock the battery compartment, and push down to unlock the battery compartment.
2. Once you have unlocked and removed the back portion of the camera you will have access to swap out the batteries.



13

Changing the Batteries or Charging

- Carefully hold the camera mount in place while pressing down on the camera to release it. You'll hear a "click" when it's unlocked.
- Once the camera has been taken down you can charge the device using the USB-C cable.
- Ensure your camera is fully charged or has new batteries. Securely hold the mount and reattach the camera to the back cover. Press down firmly on the camera until it clicks back into the locked position.



14

LED Status Lights

LED Status	Camera Status
Solid Red	Charging
Fast Flashing Blue	Pairing / Reconnecting
Solid Blue	Camera On and Paired
Fast Flashing Red & Blue	Firmware Upgrade

15

Need Help?

For more help, please follow the steps below to access your Series support page:

1. Please Visit: [Support.NightOwlSP.com](https://support.NightOwlSP.com)
2. Enter BW4 into the Search bar or scan the QR Code

FCC Warning
This device complies with part 15 of the FCC rules. Operation is subject to the following two conditions: (1) this device may not cause harmful interference, and (2) this device must accept and operate with interference, including interference from a properly authorized operation.
Changes or modifications not expressly approved by the party responsible for compliance could void the user's authority to operate the equipment.
NOTE: This equipment has been tested and found to comply with the limits for a Class B digital device, pursuant to part 15 of the FCC Rules. These limits are designed to provide reasonable protection against harmful interference in a residential installation. This equipment generates, uses, and can radiate radio frequency energy and, if not installed and used in accordance with the instructions, may cause harmful interference to radio communications. However, there is no guarantee that interference will not occur in a particular installation. If this equipment does cause harmful interference to radio or television reception, which can be determined by turning the equipment off and on, the user is encouraged to try to correct the interference by one or more of the following measures:
• Reorient or relocate the receiving antenna.
• Increase the separation between the equipment and receiver.
• Connect the equipment into an outlet on a circuit different from that to which the receiver is connected.
• Consult the dealer or an experienced radio/TV technician for help.
Radiation Exposure Statement:
The maximum exposure to the FCC radiation exposure limits set forth for an uncontrolled environment. This equipment should be installed and operated with minimum distance 20cm between the radiator and your body.

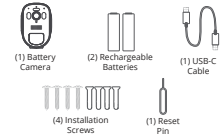
QSG-BW4 6-241 105

Quick Setup Guide

Let's get started

What's Included

Battery Camera



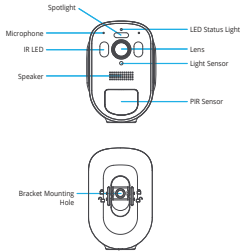
NOTE: Installing the battery Camera on the wall, you will need a screwdriver or drill (not included).

Items Not Included

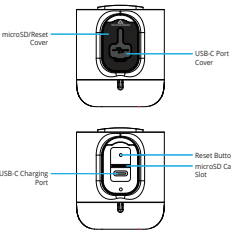


NOTE: If connecting to a TV or Monitor (not required), it must have a minimum resolution of 1080p HD. Use all of the included Night Owl accessories. Third-party accessories may not work correctly.

Battery Camera Details



Battery Camera Details (Continued)



Step 3: Download the Night Owl App

If you are a first-time user, go ahead and download the Night Owl app. Quickly create an account and log in.

Already have an account? Simply log in.



Get ready to setup your camera

1. If you want to charge the batteries with an external charger, open the battery compartment following the icons shown on the back of the battery camera. Push up to lock the battery compartment, or push down to unlock the battery compartment.
2. We recommend you connect a Type-C power supply to the battery cam during setup to avoid battery depletion and ensure successful setup.



USB Power Adapter not included

Add your Battery Camera

To begin viewing your camera, add it to the Night Owl app or to a compatible recorder. For more detailed setup steps, please scan the QR code below.



Connecting the Camera to a Wi-Fi router

1. Open the microSD/Reset cover on the bottom of the camera. Use the included reset pin and press the reset button for 2 seconds to turn on the battery camera and put it into pairing mode. When you hear, "Camera is in pairing mode" and the LED is quickly flashing blue, the battery camera is ready to be paired.
2. Open the Night Owl Protect App.
3. Tap on "Add New" or "+"
4. Follow the on-screen instructions to complete the setup process.



NOTE: The Router's security protocol MUST be set to WPA-WPA2 (strong security).