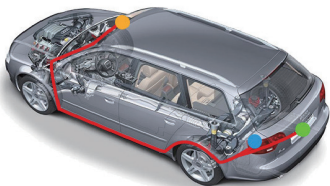
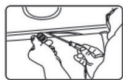
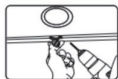


connect to the positive of reversing lamp



## ◆ Detail on Rear Cam Installation

① Select a flat and central place that near the number plate lamp at the rear of the vehicle.



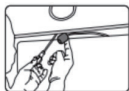
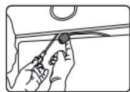
② Attach tape to the bracket of the camera to hold the camera in position while installing, and drill two small holes, one for the first screw, the second to run the reverse camera.

③ Use a screwdriver to fix the first screw leaving the screw loose enough to adjust the camera.

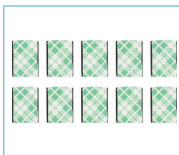


④ Insert the camera wire through the intended drilled hole, checking the installation position.

⑤ Mark the place that suitable for the second screw and drill a small hole for it.

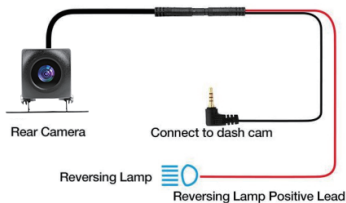


⑥ Fix the second screw and securely tighten both screws.



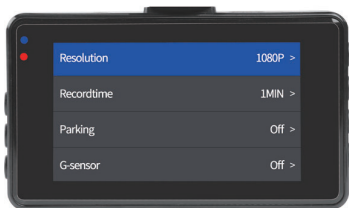
Need using these accessories during installing the rear cam

⑦ After the installation is completed, connect the rear plug to the rear camera interface of the recorder.



Then start the car engine to turn on the dash cam front and rear.  
(if turn on front cam firstly then connect rear cam to dash cam , maybe will lead to short circuit black screen - reboot dash cam maybe can fix this problem)

## - Menu Setting -



Press once “Menu Button” to enter this interface  
Press UP/Down Button to switch other more options  
Press OK to enter/confirm the options

(Another function of “Menu Button “ - - return to the previous step)

- ⚠ When turn on the Parking Monitor/ G-sensor /Motion Detect, the video easy be locked, locked file can not be loop recording , need manual delete it or format it, **so better turn off them when driving.**
- ⚠ Parking Monitor/ Motion Detect function **requires the use of hardwire kit**

Menu	Choice	How to Set	Function
Resolution	2.5K / 1080P	press "ok" to enter and confirm choice	--
Recording time	1Min/2Min/5Min	press "ok" to enter and confirm choice	record video 1 /2/5minute
Parking	Off/Low/Middle/High	press "ok" to enter and confirm choice	When parking and collision, the sensitivity of dash cam:auto start upand record.(better off when driving)
G-sensor	Off/Low/Middle/High	When	Collision, the sensitivity of dash cam: auto lock file. (better off when driving)
Motion Detect	off/on	press ok to turn on/off	when standby, it will auto record when the recording screen is no longer static
WiFi	on/off	press ok to turn on/off	Set the WiFi and connect with your PC to Playback
Screen saver	on/10s/30s/1min /off	press "ok" to enter and confirm choice	the screen will shut down after 10s/30s/1min but still keep recording
Light Source Frequency	60Hz/50Hz	press "ok" to enter and confirm choice	Pls do Choose 60Hz, or will lead to flashing
Language	English/Chinese/...	press "ok" to enter and confirm choice	--
Audio	on/off	press ok to turn on/off	microphone/record your sounds or not?
Rear Mirror	on/off	press ok to turn on/off	the video of the rear cam inverted left and right?
Boot Sound	on/off	press ok to turn on/off	the sounds of turning on/off the dash cam
Date /Time	y/m/d h/m/s	press up/down to correct, press ok to confirm and enter next option	correct the date and time , after setting ,manual turn off and turn on the dash cam means save the setting
Key Sound	on/off	press ok to turn on/off	the sounds of pressing the button
Format	OK/ Cancel	press "ok" to enter and confirm choice	delete all the video (include locked file)
Restore Factory Setting	OK/ Cancel	press "ok" to enter and confirm choice	sometimes dash cam not work can try to reset it

# - How to Playback the Video -

## Way 1 to Playback on PC

On the computer, navigate to device drive.  
"Video/F" is front camera videos, "Video/R"  
is rear cam videos.  
Select the video to playback.



## Way 2 to Playback on PC

- To playback a video with USB cable, connect the USB Cable to the device and the computer. After the device powers up, press the OK Button to select "Mass storage mode".



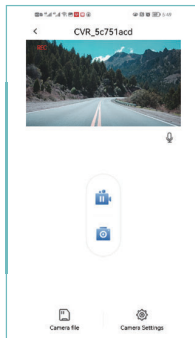
## Way 3 to Playback on Dashcam

Press “ M Button” - Press “Up/Down Button” to choose File/  
Locked File/ Photo - Press twice “OK Button” to enter and  
playback it - Press “ Menu Button” to back to previous step



## Way 4 to Playback on Phone

Using your phone to playback video , detail please see Page 07 -  
How to Connect with WiFi



## - Questions & Answer -

### Q1 If Rear Cam Not Display:

- (1) Please use our cigarette lighter charger, can not use the USB cable as dash cam charger
- (2) Please try to press " Up Button" to switch the recording screen
- (3) Please do not plug in rear cam's charger port (AV-IN) after the dash cam is turned on, otherwise it will cause the recorder to short-circuit and black screen. (Restart may fix the problem)
- (4) Reconnect the rear cam cable, especially the connection of the two sections of the rear cam cable part. If it still cannot be displayed.

### Q2 Camera automatically stop recording?

- (1) Format the memory card in setting menu. (The G-sensor might be triggered too often and locks too many video files , try lower sensitivity)
- (2) Replace a new SD Card to test ( Class10 High Speed 32-256G)

### Q3 Camera auto Power off / on.

- (1) Please use USB Type -C Cable to test if the car charger is broken.
- (2) Remove the SD card and let the camera charging using dash cam cigarette charger included in the box. Then reset the camera again.

## Q4 Camera can't turn on?

- (1) The dash cam needs continuous power supply, just check if the power connection is normal, can use the USB cable to test it and confirm the problem.
- (2) The dash cam needs to be reset, just connect the power, click the reset button with a pin and start the camera.
- (3) A defective card can cause the camera not to turn on, just remove the card or get a new card and insert it into the camera.

## Q5: Keeping Saying Format SD Card?

- (1) Please use another sd card to test and contact with us to get the free SD card replacement.
- (2) Format your new SD card on the dash cam when first use.  
(Please remember insert SD card before dash cam power on!)
- (3) Suggested set to lower G-sensor and recommended to format your SD Card monthly.

## Q6: Dash Camera Freezing/Lagging or Crashing?

Use the card needle to insert the RES Button to restart the camera (when hear the clicks sounds , it was reset successfully or when dash cam auto turn off and turn on again , then it was reset successfully)



## **Q7: Some of video files are missing only can see the front and after file.**

Hitting too hard can cause file corruption, but we can fix it.

Please copy the front and rear files together to us:

[damai\\_service@163.com](mailto:damai_service@163.com)

## **Q8: How to use the Parking Monitor function**

Need use the Hardwire Kit , If you need please feel freely contact with our seller to get one: [damai\\_service@163.com](mailto:damai_service@163.com)

## **Q9: Rear cam cable not longer enough.**

If you need the Extension Cable for your Van/SUV ,please feel freely contact with our seller to get one: [damai\\_service@163.com](mailto:damai_service@163.com)

## **Q10: Dash cam can not auto turn on/off with your car:**

(1) Please using our cigarette charger, can not use the USB cable as dash cam's charger

(2) After excluding (1), please Reset the dash cam factory setting, press ok button to stop recording firstly, then press twice the left middle button and choose the " default Setting" press ok button and confirm" ok" choice - Please take off the card and use a needle to insert the RES little hole

## **Q11 The recording video keep flashing / colourful ?**

(1) Verify that Frequency option is set to 60Hz (North America) or set accordingly.

(2) Restore Factory Setting or use a needle to insert the RES little hole to reset

## **Q12 The dash cam display red light but black screen.**

(1) Set the Screen Save? Press "Menu Button" - choose the " Screen Save - set if off

(2) Use our cigarette lighter charger to charge it - Reset it ( RES) - Long press the "Power Button" to turn it on again

## **Q13: The camera gets HOT?**

It is normal for your camera to run slightly hot. Due to it is recording video at high speed, the dash cam maybe hot during using.

(no more than 170°F/75C)

## **Q14 Can not save the Date & Time setting?**

Please use our cigarette charger charging it for 30 minutes - Take off the card and use a needle to insert the RES little hole - Set the default setting - Set the date and time , then exit the menu and manually turn off the dash cam = save the setting. Do not cut off the power, keep charging for about 20 minutes

## **Q15 Any other questions or need other accessory.**

Contact the amazon seller's email, We are always here:

[damai\\_service@163.com](mailto:damai_service@163.com)

## - Product Specification -

<b>Display Screen</b>	3.0-inch IPS Screen
<b>G-sensor</b>	Built-in
<b>Resolution</b>	Front-2.5K Rear - 1080P
<b>Lens</b>	170 Degree Ultra-Wide Angel Lens
<b>Language</b>	English, German, Japanese, etc.
<b>Video Format</b>	TS
<b>Picture Format</b>	JPG
<b>Microphone</b>	Support
<b>SD Card</b>	64G (inserted in dash cam ) , Support 256G
<b>Power Interface</b>	5V/2A
<b>Battery</b>	Build in 300mah

# A HUGE THANK

Dear customer,

Thank you so much for purchasing our Biuone dash camera A20Pro.

This is the upgraded type of our item A20 , Asin: B086ML686Q,

Link : <https://www.amazon.com/dp/B086ML686Q>

According to the buyer's feedback, optimize from the product resolution (especially the rear cam's) to the product function (mainly the WiFi function, everyone wants to play back through their Phone, but not only dash cam and PC), also configure a 64G SD Card with a larger memory.

Hope you will be satisfied with this 2.5K dash cam with WiFi.

You will find it is more easy to use and helpful for your driving.

If you have any questions about the settings, please email us:

[damai\\_service@163.com](mailto:damai_service@163.com)

Most of the problems can be solved. If we can not solve the issue, we're always happy to provide full, hassle-free refund. We just want our customer to have a happy shopping experience and proud to use Biuone Dash Cam!

There is no perfect product, but we will do our best to provide you with cost-effective products and 100% customer service.

Choosing Biuone dash camera is to choose a comfort and happiness! This is really great gift for you/your family/your friend.

Thanks again for your supports!!!

Best Regards

Biuone Team

**FCC Warning:**

This equipment has been tested and found to comply with the limits for a Class B digital device, pursuant to part 15 of the FCC Rules. These limits are designed to provide reasonable protection against harmful interference in a residential installation. This equipment generates, uses and can radiate radio frequency energy and, if not installed and used in accordance with the instructions, may cause harmful interference to radio communications. However, there is no guarantee that interference will not occur in a particular installation. If this equipment does cause harmful interference to radio or television reception, which can be determined by turning the equipment off and on, the user is encouraged to try to correct the interference by one or more of the following measures:

- Reorient or relocate the receiving antenna.
- Increase the separation between the equipment and receiver.
- Connect the equipment into an outlet on a circuit different from that to which the receiver is connected.
- Consult the dealer or an experienced radio/TV technician for help.

**Caution:** Any changes or modifications to this device not explicitly approved by manufacturer could void your authority to operate this equipment.

This device complies with part 15 of the FCC Rules. Operation is subject to the following two conditions:

(1) This device may not cause harmful interference, and (2) this device must accept any interference received, including interference that may cause undesired operation.

This equipment complies with FCC radiation exposure limits set forth for an uncontrolled environment. This equipment should be installed and operated with minimum distance 0cm between the radiator and your body.