

Movie: Front and rear videos are all in this file. The videos not been locked.

Photo: You take some photo are all in this file.

RO: The videos are been locked.

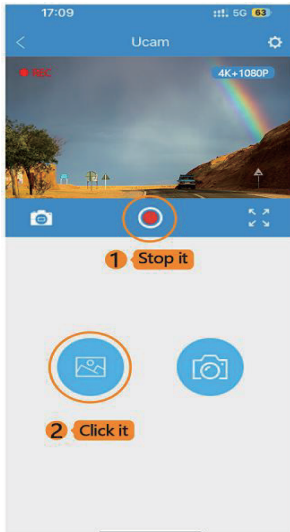
Way 2: Use Type-C date cable(can not use it to charge the dash cam)

To play on your PC/Mac, simply connect the camera using included short USB Data cable, there you will see the “Mass Storage” on dash cam screen. Then you can see the files on your PC.



Way 3: See the videos and photo on your Phone

You can open the “Ucam” App, Like below picture show:



You can then edit and share these videos and images on your phone.

Installation:

Step 1: Insert the Memory Card

Before installation, please check the camera's normal function, and make sure you are using a high speed Micro Memory card (speed Class 10 or above.), and format the card in the camera menu before recording



Warm Tips

Please format the card within the setup menu before use. Please insert the card in the right direction.

As some people insert the Memory card incorrectly and was wedged between the Memory card slot and a gap.

Gently push the memory card in until you hear a click, and allow the spring release to push the card in/out.

Step 2: Install the front camera on your car windshield

- Clean the front windshield.
- Assemble the suction mount and front camera together.
- Remove the protective plastic film from the suction pad, push the suction cup onto the inner windshield in a suitable position (Won't shade your vision while driving), rotate the suction bracket handle to ensure that it is well fixed.



Clean the front windshield



Push the stand in



Tighten the nuts



rotate the suction bracket handle

If there is a problem of falling off, it can be replaced. Just tell us.

Step 3: Connect the car original charger to the cigarette lighter.

Connect the car charger to the camera and the cigarette lighter, hide the rest of the cable in the gap of the Interior trim board. Route the cables through the top ceiling and the A-pillar so that it does not interfere with driving.



Step 4: Mount the Rear Cam



1. Please connect the cables as shown :
 - Connect the socket to the dash camera's rear camera interface.

If the rear camera cannot be displayed in the dash cam:

- (1). Please try to switch the recording screen (single front lens, single rear lens or dual lens display) in standby mode by short pressing the power button. If it still cannot be displayed, please try 2.
- (2). Reconnect the rear cam cable, especially the connection of the two sections of the rear cam cable part. If it still cannot be displayed, please try 3.

(3). Contact the amazon seller's email, our engineer will help you better:

Enter our amazon shop - click “ask a question”

There are two ways to place the camera.

-METHOD 1: Mount on the rear windscreen. Package includes a 3M glue for the rear camera. Please clean the rear windscreen and find an appropriate position before you stick the rear camera onto the windscreen.

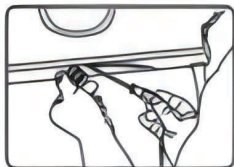
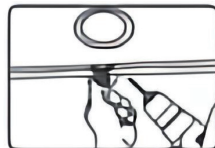


-METHOD 2: (Recommended!) Mount near the license plate. Package includes fixing screws to help you fix it.



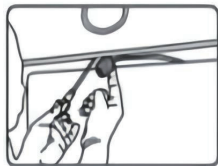
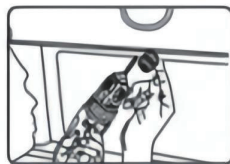
Note: The rear camera don't have the red wire kit to connect the car reversing lamp positive lead, therefore it can not show the reversing guidance lines!

2.1. Select a flat and central place that near the number plate lamp at the rear of the car



2.2. Attach tape to the bracket of the camera to hold the camera in position while installing, and drill two small holes, one for the first screw, the second to run the reverse camera

2.3. Use a screwdriver to fix the first screw, leaving the screw loose enough to adjust the camera.



2.4. Insert the camera wire through the intended drilled hole, checking the installation position.

2.5. Mark the place that suitable for the second screw and drill a small hole for it.

2.6. Fix the second screw and securely tighten both screws.

2.7. After the installation is completed, connect the rear plug to the rear camera interface of the recorder.



Please Note:

You can freely choose the screen display mode:

- 1> Front camera display only**
- 2> Backup dashcam display only**
- 3> Front + Rear camera display (right corner)**
- 4> Front + Rear camera display (1:1)**

You all can according to short press power button to switch.

DOWNLOAD APP:

You can copy the link below or scan the QR code to see how to

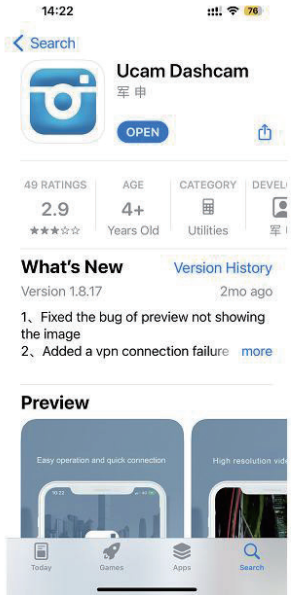
download app and connect the WiFi.

<https://www.youtube.com/watch?v=u8oc0ETJRR8>



Step 1: Download the app on your Phone.

Download the APP named “Ucam Dashcam” from Apple APP Store or Google Play Store



1. Scan QR Code from your S10 dash cam



2. You can also directly scan this QR code below.

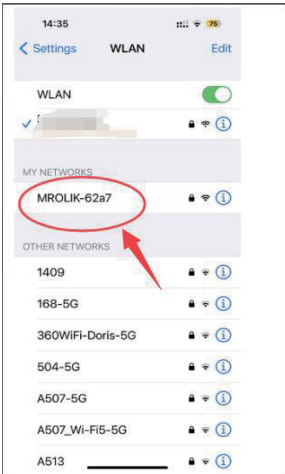


Note: This is to avoid series connection between different device Some device may prompt that the software contains virus, you could run the installation as an administrator to

download App

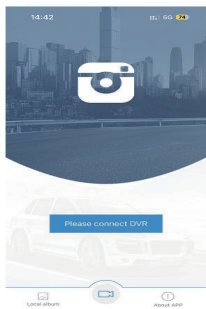
Step 2: After downloading the app, use your phone to link the dash cam's WiFi.

- ❖ Open your “WLAN”,
- ❖ Find the “**MROLIK-62A7**”,
- ❖ Connect it,

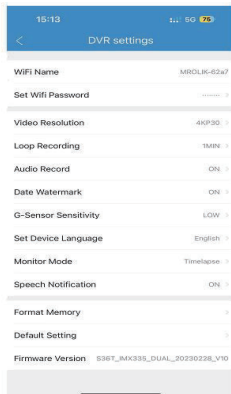
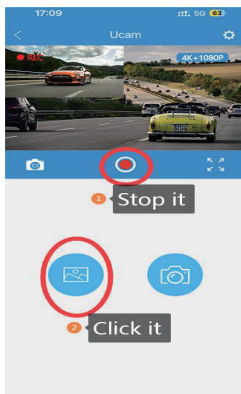


❖ **WiFi Password: 12345678**

Step 3: Open the app “Ucam Dashcam”



Click the “Please connect DVR” Please wait a second or two



Press the small settings icon to go to the settings page

Enjoyed Most of Functions on Your Phone

GPS Player:

DOWNLOAD GPS PLAYER

Download our GPS
Player from website:

<http://www.cqyouqing.net/pc/player/yqplayer>

When you download
the GPS player, then
you can transfer your
dash cam to computer.

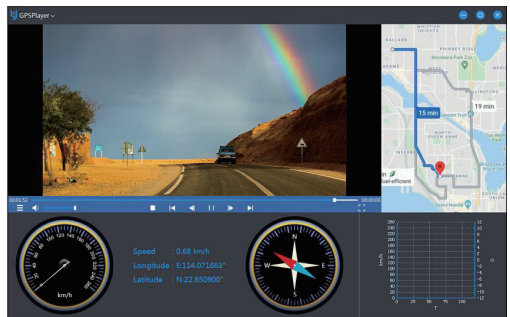


Then drag and drop the video into this GPS player black area, it will then automatically play the video and the exact location will be displayed on the right hand side, please note below picture.



Then will show the right picture:

On the GPS player, you can also edit videos and travel tracks. With this recorder, you can enjoy the pleasure it brings you.



Questions & Answer:

Common Problems and Solutions:

1.Q: The camera can not record video or take photos?

Or show: “Please insert insert C6 and above Memory card”

1. A: Be sure you are using suitable Memory card: Speed over Class 10. Format your new Memory card on the dash cam when first use!

2.Q: Camera power off after a few seconds.

2.A: Make sure to keep the camera plugged into power for daily use because the internal battery is designed to save your personal settings. If the dash cam still powers off after connecting to a usable power cord, please contact us for help.

3. Q: The camera automatically stop recording?

3. A: Format the Memory card.

The G-sensor might be triggered too often and locks too many video files, try lower sensitivity.

4. Q: The camera can not turn on?

4. A: This camera features a built-in battery as internal power, it's used only for saving the videos file after external power supply cuts off (car turn off). This camera will not turn on without external power supply.

Check the power supply, make sure they are connected properly, power indicator on the power adapter is on, and the connectors are tight.

5.Q: Suction mount cannot attach on windshield well?

5. A: Please clean the windshield with a glass cleaning wipe. Removed the protective film.

Please soak suction mount to warm water for a moment. If it is still not working, please contact **seller after-sale service** to get a replacement.

6. Q: The rear cam cannot display?

6. A: (1). Please switch the camera display mode to double check the rear camera status.

(2). Please check whether the TYPE-C plug is in place and the cable is connected correctly.

(3). Try to disconnect the camera and clean the connector with some Medical alcohol and connect it again.

7. Q: Color of the video or photo is not good?

7. A: Verify that Frequency option is set to 60Hz (North America) or set accordingly.

8.Q: The camera crashes or not responding to operations?

8.A: Use a pin or and unfolded paper clip, press the RESET button to restart the camera.

9. Q: I can't delete files on my Memory card within the dash cam.

9. A: Check if these files are "locked". If so, please delete the files by manually.(Delete on PC or Format the files on dash your dash cam. Or you can unlock the files. Select locked files, press menu button, then press OK button, and then select unlock current or unlock all. It is optional!)

10. Q: Cannot see the reversing guide image when reversing.

10. A: Please check the wiring and make sure the RED LINE of rear camera is correctly linked to the POSITIVE ELECTRODE of the reserve light.

11. Q: The screen blanks after a few minutes.

11.A: The screen saver is set to ON . Change settings to OFF if required. Default setting is off.

12. Q: Can not move the Memory card.

12. A: With the card previously installed, you now need to push the card further inwards slightly, using your finger nail, until you hear and feel a small latch. Use the edge of a small coin if you have difficulty. Release pressure and the card will spring out sufficiently for you totake hold of it.

13. Q: I can only record a few minutes of videos on my Memory card.

13. A: Change the recording size (Video Length function). Increase the size of the Micro Memory card.

14. Q: Keeping Saying Format Memory Card?

14. A: The card is damaged, please use another Memory card to test and contact with us to get the free Memory card replacement. Format your new Memory card on the dash cam when first use.

(Please remember insert Memory card before dash cam power on!) If the G-sensor is set to high level, it is easy to lock files and make the Micro Memory card full,so suggested set to lower G-sensor and recommended to format your Memory Card monthly.

15.Q: Making Annoying sound?

15. A:Because the radio will transmitting frequency, the radio is magnetic, it will be interference for electronic products. If the two products are too close, they will interfere with each other. You can move the driving recorder to a position slightly away from the radio. Then it will not interfere each other and won't make a buzz buzz sound.

Low battery will also lead to buzzing sound. Please keep charge the dash cam for a while.

16.Q:Connect dash cam to PC ,it will show "mass storage" and "PC Camera"

16. A: It is optional that you can choose one of them. If choose "mass storage" you view playback videos.If you choose "PC Camera", you can use dash cam as camera.

17. Q: Color screen or lines on screen?

A: First, Check if the card speed is not enough, Memory card not compatible will lead to that case. (We suggest using class 10 high speed micro Memory card, Format your new Memory card on the dash cam when first use!)

Second, Remove the Memory card, Reset dash cam, do not insert Memory card. check if it still has lines on the screen.

18.Q: The camera gets HOT?

18. A: It is normal for your camera to run slightly hot. Due to it is recording video at high speed, the dash cam maybe hot during using. (no more than 170°F/75°C)

19.Q: Dash Camera Freezing/Lagging or Crashing?

19.A: Use a pin or unfolded paper clip, press the RES Button to restart the camera. Now the dash cam should turn ON.

If it still doesn't turn ON, then please CONTACT US.

20.Q: The camera keeps turning on and off even though it is connected to the power cable.

20.A: (1) First of all, please check if the car charger is broken, remove the dashcam from the mount. Then connect it to another usable Type C charger to test if the on and off problem still exists. If the on and off problem doesn't happen anymore, then the charger has some issue and please contact us for a new charger.

(2) If the problem still after using another usable Type c charger, then the root cause is the Memory card. Please format the Memory card on camera or your PC.

(3) If the problem is still after you have the Memory card formatted, then the root cause of this problem is the Memory card is broken, please contact for a new Memory card.

21.Q:Some of video files are missing or Can't find videos.

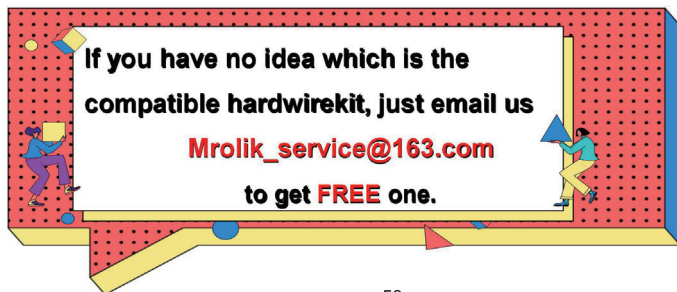
21.A:(1) Our S10 dash cam has a Loop Recording function, it will delete the oldest files and record newer files when the Memory card is full except for the locked video files. We recommend you turn on the G-Sensor at low sensitivity which will auto-lock the videos when a collision occurs. If you want to lock the current video manually, press square button on the right side of the dash cam screen while the camera is recording. The video will be locked and gets unable to be removed by Loop Recording.

(2) The videos recorded by front and rear cameras are saved in

different file folders. When you connect the dash cam to your computer, you can find a folders named "CARDV" , click it, you will find 3 folders named "Movie" "Photo" "Ro"representing no locked videos, Photos and locked video respectively. You can Download, playback and backup according to this video classification. When you are playing a video with the camera's playback mode, you can press "up" button to switch video portfolios from the front videos, locked videos and rear videos.

22.Q:S10 dash cam can not record after car turn off.

22.A:S10 dash cam support 24 hours recording only when it is connected to a **TYPE C USB** hardwire kit (not included in the package) and the Time Lapse record is turned on.



Acknowledgement Letter:



A HUGE THANK

Thank you so much for purchasing Mrolik 4k dash camera. Hope you will be satisfied with this 4k dash cam with WiFi GPS APP. You will find it is more easy to use and helpful for your driving.

If you have any questions about the settings, please email us: **Mrolik_service@163.com**. Most of the problems can be solved. If we can not solve the issue, we're always happy to provide full, hassle-free refund. We just want our customer to have a happy shopping experience and proud to use Mrolike Dash Cam! There is no perfect product, but we will do our best to provide you with cost-effective products and 100% customer service. Choosing Mrolik dash camera is to choose a comfort and happiness! **Thanks again for your supports!!!**

FCC Warning:

This equipment has been tested and found to comply with the limits for a Class B digital device, pursuant to part 15 of the FCC Rules. These limits are designed to provide reasonable protection against harmful interference in a residential installation. This equipment generates, uses and can radiate radio frequency energy and, if not installed and used in accordance with the instructions, may cause harmful interference to radio communications. However, there is no guarantee that interference will not occur in a particular installation. If this equipment does cause harmful interference to radio or television reception, which can be determined by turning the equipment off and on, the user is encouraged to try to correct the interference by one or more of the following measures:

- Reorient or relocate the receiving antenna.
- Increase the separation between the equipment and receiver.
- Connect the equipment into an outlet on a circuit different from that to which the receiver is connected.
- Consult the dealer or an experienced radio/TV technician for help.

Caution: Any changes or modifications to this device not explicitly approved by manufacturer could void your authority to operate this equipment.

This device complies with part 15 of the FCC Rules. Operation is subject to the following two conditions:

(1) This device may not cause harmful interference, and (2) this device must accept any interference received, including interference that may cause undesired operation.

This equipment complies with FCC radiation exposure limits set forth for an uncontrolled environment. This equipment should be installed and operated with minimum distance 20cm between the radiator and your body.

ISED Statement

- English: This device complies with Industry Canada license-exempt RSS standard(s). Operation is subject to the following two conditions: (1) This device may not cause interference, and (2) This device must accept any interference, including interference that may cause undesired operation of the device.

The digital apparatus complies with Canadian CAN ICES-3 (B)/NMB-3(B).

- French: Le présent appareil est conforme aux CNR d'Industrie Canada applicables aux appareils radio exempts de licence. L'exploitation est autorisée aux deux conditions suivantes: (1) l'appareil ne doit pas produire de brouillage, et (2) l'utilisateur de l'appareil doit accepter tout brouillage radioélectrique subi, même si le brouillage est susceptible d'en compromettre le fonctionnement. L'appareil numérique du CIEM conforme canadien peut - 3 (b) / nmb - 3 (b).

This device meets the exemption from the routine evaluation limits in section 2.5 of RSS 102 and compliance with RSS 102 RF exposure, users can obtain Canadian information on RF exposure and compliance.

cet appareil est conforme à l'exemption des limites d'évaluation courante dans la section 2.5 du cnr - 102 et conformité avec rss 102 de l'exposition aux rf, les utilisateurs peuvent obtenir des données canadiennes sur l'exposition aux champs rf et la conformité.

This equipment complies with Canada radiation exposure limits set forth for an uncontrolled environment.

This equipment should be installed and operated with minimum distance 20cm between the radiator & your body.

Cet équipement est conforme Canada limites d'exposition aux radiations dans un environnement non contrôlé.

Cet équipement doit être installé et utilisé avec une distance minimale de 20 cm entre le radiateur et votre corps.