

# MROLIK S10 USE MANUAL



S10 4K Dash Cam  
Front and Rear  
with GPS WIFI APP

Memory card has been inserted into the “TF” port of dash cam.

If you want to use the “PARKING MODE”,  
please use the “HARDWIRE KIT CABLE” to charge the dash cam.

# ISSUES



- ⚠ NOT HAPPY SHOPPING EXPERIENCE
- ⚠ Inaccurate website description
- ⚠ Missing parts or accessories
- ⚠ Wrong item was sent
- ⚠ Damaged or defective item

ANY QUESTIONS  
WHAT SO EVER?



- ✓ Please contact us before returning the item.
- ✓ We will do our best to help you and give you 100% Satisfaction Guaranteed.
- ✓ **"mrolik\_service@163.com"** LIVE CUSTOMER SERVICE.
- ✓ Customer service is open for business **24/7**.



1. The built-in battery is only to save the time settings. Operation of the S10 dash cam requires external power support. Please use the car charger that came with you to charge.
2. The " Parking Mode " function need use the **hardwire kit** to charge the S10 dash cam. **Please contact us to get the hardie kit for free.**
3. If you accidentally break the car charger, bracket, Memory card or other accessories during use, please contact us. We would like to send you a replacement.
4. When you touch the dash camera screen is very hot, this is normal.
5. If you open the dash cam wifi , you don't use the app "**Ucam**" , please turn off the dash cam wifi linked to your phone, otherwise you can not use your own network.
6. The 1080P rear camera iust can show the rear view on front camera screen , it can not show the reversing guidance line . Please note!

**7 . When you driving, please **turn off the " parking mode "**, Otherwise, your camera will constantly turn on and off. All the camera on the market are set up in this way, and I hope you understand. Just turn on G-sensor and loop recording functions when you driving, it will record everything that happens to you while driving. When parking, turn on the parking mode.**

**8 . The effective distance of WiFi is only 3-8 meters, beyond this distance, WiFi cannot be connected. If you can't connect to wifi, please try the following methods:**

**A . Forget the Wi-Fi network, restart the machine and mobile phone, and reconnect.**

**B . Turn off mobile security software and VPN.**

**C . Turn off the 4G / 5G data traffic of the mobile phone.**

**D . The closer the camera and the mobile phone are the better.**



<b>PACKAGE CONTENTS .....</b>	<b>1</b>
-------------------------------	----------

<b>INSTALLATION MAP .....</b>	<b>3</b>
-------------------------------	----------

<b>HOW TO USE SHORTCUT KEYS .....</b>	<b>4</b>
---------------------------------------	----------

<b>IMPORTANT NOTICE .....</b>	<b>7</b>
-------------------------------	----------

<b>MENUE SETTING .....</b>	<b>9</b>
----------------------------	----------

- **Icon Introduction -----10**
- **Inserting/removing a Memory card -----11**
- **Power supply explanation -----12**
- **Explanation of the four small icons -----14**

<b>MAIN MENUE SETTINGS .....</b>	<b>16</b>
----------------------------------	-----------

## **PLAYBACK MODE ..... 27**

- Watch the video on camera -----27
- **HOW TO PLAYBACK THE VIDEOS ON PC -----30**
  - 1) Way 1: use the Memory card reader -----30
  - 2) Way 2: Use Type-C data cable(can not use it to charge the dash cam) -----31
  - 3) Way 3: See the videos and photo on your Phone -----32

## **INSTALLATION ..... 33**

## **DOWNLOAD APP ..... 39**

## **GPS Player ..... 44**

## **Questions & Answer ..... 46**

## **Acknowledgement Letter ..... 54**

Dear Customer,

We are truly grateful for you choosing **Mrolik** dash camera! We hope you will enjoy the quality of our products and services.

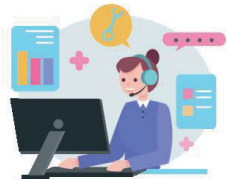
If you need assistance, or have any suggestions to improve it, please feel free to contact us. You can reach us via **AMAZON** Platform.

Enter the store through product link

-Click "ask a question"

We have professional team at your service.

Response in just 12 hours



Our support team will respond you within 12 hours. You are an incredibly important customer, and serving you has been an honor.

We may not be the best, but we will always do our best to provide you the best service!

Kind Regards,

**Mrolik After-sales TEAM**



♥ **Mrolik \_\_Dash Cam Manufacturer**

Response in just 12 hours. Contact us before returning the item.  
We will help you resolve any issues asap.

**[Mrolik\\_service@163.com](mailto:Mrolik_service@163.com)**

# PACKAGE CONTENTS



Mrolík S10 Dash Cam



2.29FT Type-C Data Cable  
(ONLY Connect S10 dash cam  
and your PC to playback video)



11.48FT Type-C Car Charger Cable



19.68 FT Rear Camera



Dual USB Car Charger



Card Needle  
(Poke the reset hole to reset the  
dash cam when the dash cam  
can not work)



Memory Card Reader  
(For playback videos on PC)



Car Wire Trim Tool  
(Help hidden cables)  
Lens Wiping Cloth



64GB Memory Card  
(Have inserted into the  
"TF" port of camera)





Suction Mount with GPS Function



8X Screws  
2X 3M adhesive sheet stickers



S10 USE MANUAL



10X Cable Hiding Clip

# INSTALLATION MAP:

## SIMPLE DIAGRAM OF PRODUCT CONNECTION



### Note:

Three Ways to Playback:

- 1: Press the DOWN button to enter the Playback Mode, press OK button to playback. Rear camera record videos and front camera record videos all here.
- 2: Use the Type-c USB Cable connect the dash cam with your PC to Playback and Save your recording file. Please copy the video you need to view from Memory card to your local computer for playback, otherwise it will cause the video to be very stuck.
- 3: Insert the Memory card into the Memory Card Reader to connect with your PC then Playback and Save your recording file. Please copy the video you need to view from Memory card to your local computer for playback, otherwise it will cause the video to be very stuck.

## HOW TO USE SHORTCUT KEYS:



1.USB Power Port

2.Rear Camera Port

3.Power Button



4 3.18inches Screen

5.Capture/Lock/Delete Button

## HOW TO USE SHORTCUT KEYS:



1.USB Power Port

2.Rear Camera Port

3.Power Button



4 3.18inches Screen

5.Capture/Lock/Delete Button

Although these buttons look a bit complicated, they are relatively simple after you use them many times. You can also combine the explanation of the buttons with the table below. If you have any questions, you can contact us.

## Key Operation Guide

You can copy the link below or scan the QR code to see how to operate the dash cam button.

<https://www.youtube.com/watch?v=m90UEWBVOyQ>



## IMPORTANT NOTICE:

### Some precautions to know before using:

#### 1.Device Power

Connect camera to your car cigarette lighter using the included car charge cable.

**Mrolik** S10 dash cam is programmed to **TURN ON** and **START RECORDING** automatically when it receives power, and **STOPS RECORDING** and **TURN OFF** automatically when power gets disconnected within 1-2 seconds. (i.e. when you start / stop your car)(Make sure to always keep the camera plugged into power!!!)

#### 2.Memory Card

Memory cards can degrade over time and affect your camera's ability to save your media. Try swapping out an older card for a new one if you're having any problems.

You will need to insert a Memory card before you can start recording. Please insert only a brand name Class-10, U3 or higher speed Micro Memory card up to **512 GB max for reliable** operation. **(64GB Memory card included has been inserted to the TF of the camera)**

3.Keep your Memory card in good condition by reformatting it regularly. This will erase all of your media, so be sure to save it first.

1): Press M button and enter Settings

2): Press DOWN button > Format> OK>OK

4.WARNING: This product is for DC 12v / 24v only.

5.Want to know what software version you're using? Here's where you can find out.

1): Press M button and enter Settings

2): Press UP button > Version> Ok

6.Do not expose this product to rain, moisture or water under any circumstances, as this may result in external or internal damage.

7.Do not put the front dash cam in a damp environment. This dash cam front is not designed to be damp proof. BUT the rear camera is waterproof.

8.This product is intended for use in motor vehicle only. Do not install the camera where it might block the driver's view of road (including the mirrors) or the deployment of the air bags.

9.Be sure the camera lens is clean and there is nothing blocking the lens.

10.Do not leave the camera in direct sunlight for a long period of time or where the temperature could go above 170°F (75°C).

11.The dash camera is equipped with internal GPS function.



## **MENUE SETTING:**

The S10 dash cam will be automatically powered on when it's plugged into a 12V accessory socket or cigarette lighter and receives power (i.e.: when the vehicle is started).

Automatic start to record, just plug and play, video files will be saved on the Memory card.



## Icon Introduction:

The main interface:



- |  |                          |
|--|--------------------------|
| 1. Recording Indicator                 |                          |
| 2. Video Time                          |                          |
| 3. Date/Time                           | 11. Microphone Indicator |
| 4. Microphone Off and On Shortcut Keys | 12. Parking Mode         |
| 5. Screen Saver                        | 13. GPS                  |
| 6. Setting                             | 14. Fatigue Driving      |
| 7. Playback mode(Album)                | 15. WDR                  |
| 8. Take Photo                          | 16. Resolution           |
| 9. Emergency Recording (Lock Video)    | 17. Rear Camera View     |
| 10. WiFi Indicator                     |                          |



## Inserting/removing a Memory card

1. How to insert the Memory card into the S10 dash cam? (When you receive the package, the Memory card has inserted the 'TF' port of the dash cam)

Make sure the camera is turned OFF First. Then align the GOLD CONTACTS facing towards the front of the camera (Lens Side).

Then insert the memory card half way in. Then use the finger nail or a paper clip to push the card all the way inward until it clicks and locks in place.

## 2.How to remove the Memory card from dash camera?

To remove the Micro Memory card, gently push its edge inward until it clicks, and then pops out, then simply pull it out of the slot.

## Power supply explanation

### POWER ON

Short press power button to turn on your S10 dash cam.



### POWER ON

Short press power button to turn on your S10 dash cam.

## **POWER OFF**

Press and hold power button about 10 seconds to turn off the dash cam.



## **POWER Off**

Press and hold power button about 10 seconds to turn off the dash cam.

### **Kindly minder:**

Short press power button > Front and

Rear View > Front Only> Rear Only >

Lock Screen > Screen Display Off

## Explanation of the four small icons

After the dash cam is turned on, we can first familiarize ourselves with what the four icons shown in the picture represent.



4. Microphone button indication icon (Press the UP button, turn on/off microphone )

Please note below pictures show:



5. Screensaver indicator icon (Press OK button, the screen will be black or on)

6. Menu instruction icon (Press M button, enter the menu page)

7. Playback mode indication icon (Press Down button enter playback mode)

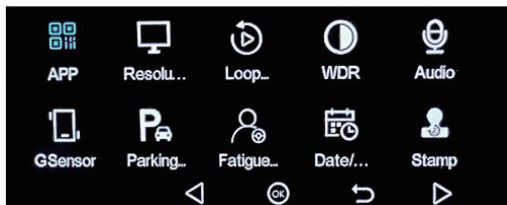
Please note below picture show:



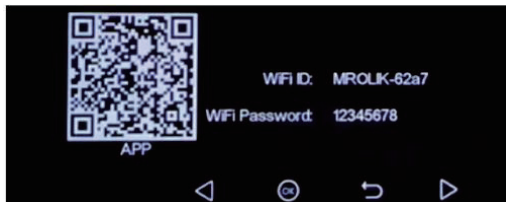
Return button (Press down button to return)

## MAIN MENUE SETTINGS:

Press "M" button enter to the menu page. Like right picture:



➤ APP: Press OK button you will enter right picture:



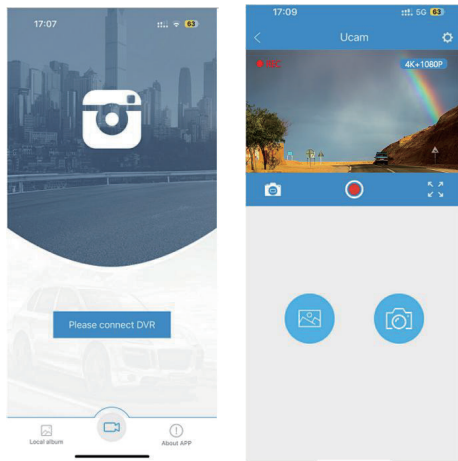
● The QR code on the left is to download the software.

You can scan this QR code with your phone and download a software called "Ucam" to your phone.

① OR you can search the software named "Ucam", then download it

- Turn off the other WIFI networks linked to your phone, find "MROLIK-62a7" and link to it with the password "12345678".

① Click the “Ucam” APP enter below picture:



② Click the “Please connect DVR”, you will enter up second picture:

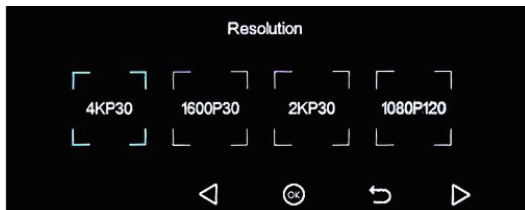
This way you can know if your car is safe and sound right now from the comfort of your home, via your phone.



- ③ NOTE: If you use the “Ucam” app, then you can do operation on dash cam. If you want to operate the dash cam, please quit the app and turn off the dash cam WiFi.

## Please see page 39!

- Resolution: Choose “Resolution”, press “OK” button enter below picture:



Press “OK” button choose “4KP30”, press “M” button to return.

- Loop Recording: Choose “Loop Recording”, press “OK” button enter below picture:

You can choose  
1min/2mins/3mins.



When you turn on the function, the oldest videos will be overwritten. But the “locked” videos (like below) can not be overwritten, need you to format the Memory card.



✧Note: If there show the please format the Memory card or Memory card is full.

- ① You need to check there if have a lot of “**locked**” videos, If yes please adjust the G-sensor to a “low”.
- ② If there don't have a lot of “**locked**” videos, maybe the Memory card is broken, you can tell us we will give you new Memory card.

Press “M” button to return.

➤ WDR (Wide Dynamic Range): Choose the “WDR”, press “OK” button enter > off/on

Dynamic range is the ratio of the brightest portion of the image to the darkest portion of the image.

WDR images can record and represent a greater range of luminance levels than can be achieved using more traditional methods.

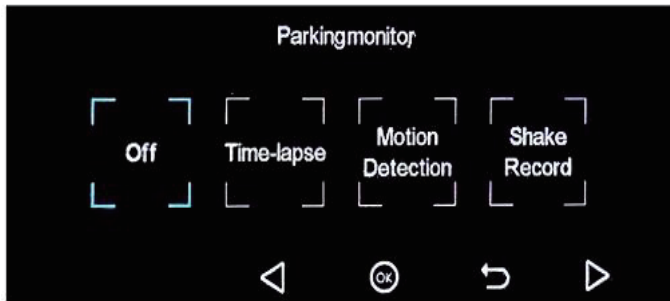
➤ Auido: Choose the “Audio”, press “OK” button enter > off/on  
You can set it to On or Off accordingly. If set to Off, the camera will not record the audio.

➤ GSensor: Choose the “GSensor”, press “OK” button enter > Off/Low/Medium/High

We suggestion that choose the “low”.

If the G Sensor is activated when over limitation braking/shocking/vibration occurring during recording the existing recording video file will be automatically locked.

➤ Parking monitor: Choose “Parking monitor”, press “OK” button enter below picture:



① OFF

② Time-lapse

③ Motion Detection

④ Shake Record

•**Parking Mode:** There are 3 options under parking mode:

❖ **Time-lapse:**

Time lapse record a video at low frames at 1 / 2 / 3 / 5 / 10 / 15 fps, It keeps recording continuously without audio recorded.

When you play the video, it plays in fast forward speed.

❖ **Motion Detection:**

The camera will automatically record for 1 minute while a moving object is detected while car is parked and will stop recording if no new movement.

### ❖ Shake Record:

When this dash cam detects shaking, it turns on recording and locks the video.

**Note: We recommend to buy Mrolike hardwire kit cable for parking mode recording.**

✓ **Time-lapse Recording:** Record video from frames captured at specific time intervals to conserve memory and reduce the time it takes to review video. The default is off.

**Note: After the car is turned off, “Parking Monitor” function need use the HARDWIRE KIT to charge the dash cam, this function can work.**

➤ **Fatigue Driving:** Choose the “Fatigue Driving”, press “OK” button enter > Off/1 Hour/2Hour/3Hour/3Hour

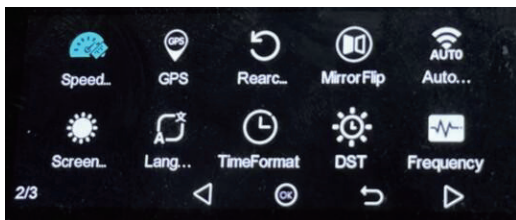
➤ **Date/time:** Choose the “Date/time”, press “OK” button enter .

**Press “UP/DOWN” button to change the number, press “OK” button to move.**

**Press “M” button to return.**

➤ **Stamp:** Choose the “Stamp”, press “OK” button enter > Logo/Time/Position/Speed/Off

Next Page:



- **Speed Units:** Choose “Speed units”, press “OK” button enter > KMH/MPH.

Kilometer per hour (KMH) and miles per hour (MPH) are available for speed unit.

- **GPS:** This feature allow you to see your current geographical location in Latitude & Longitude. If disabled, your camera will no longer measure your speed and position; nor synchronize the time/date. (Only available when connect with GPS signal)  
Please use “Dashcam Viewer” to playback videos and to visualize your position and speed on your computer.
- **Rearcam Mirror:** Choose “Rearcam Mirror”, press “OK” button enter >Off/On

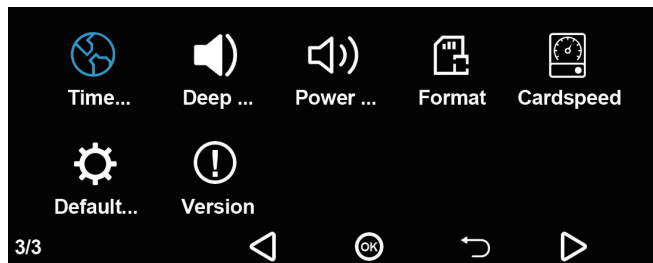
- ❖ Rear Cam Mirror can make the image of the rear camera to be displayed and recorded as reversed compared to the actual view, you can set the setting.
- ❖ If you are reversing your car use the rear camera, you need to turn ON the rear cam mirror.
- ❖ If you just use the rear camera to record rear view, you just turn off the rear cam mirror.
- Mirror Flip: Choose “Mirror Flip”, press “OK” button enter >Off/On.
- Auto WiFi: Choose “Auto WiFi”, press “OK” button enter >Off/On.
- Screen Saver: Choose “Screen Saver”, press “OK” button enter >Off/10s/30s/3Mins.

You can set it by adjusting different time intervals on menu. The screen is black, but the dash cam is still recording.

- Language: Choose “Language”, press “OK” button enter >English/French/German/Spanish/Chinese/Japanese
- Time Format: Choose “Time Format”, press “OK” button enter >24-Hours/12-Hours
- DST: Choose “DST”, press “OK” button enter >Daylight Saving Time ON / OFF

- Frequency: Choose “Frenquency”, press “OK” button enter >50HZ/60HZ

Next Page:



- Time Zone: Choose “Time Zone”, press “OK” button enter > Choose Your Time Zone
- Deep Sound: Choose “Deep Sound”, press “OK” button enter > Turn on/off the button sound
- Power Sound: Choose “Deep Sound”, press “OK” button enter > Turn on/off the dash cam sound when you turn on/off the dash cam.
- Format: Choose “Format”, press “OK” button enter > Clear Memory card data



In order to a Clean, Smooth, Comfortable using experience, we suggest you format your Memory card once a month

- Cardspeed: Choose “Cardspeed”, press “OK” button enter >Card Speed Detection
- Default Setting: Choose “Default Setting”, press “OK” button enter >Reset All Settings
- Version: Choose “Version”, press “OK” button enter >Software Version

## Suggestion Setting:

1. Please turn on the G-sensor and adjust it to a “low”.
2. Please turn on the “loop recording” as 3mins.
3. When you driving, please turn off the parking mode.  
(Parking mode need the hardwire kit to charge)  
The other settings you can turn on or off as you like.  
The dash cam will work well.

## PLAYBACK MODE:

(watch the video on camera)

Press DOWN button like right picture show to enter playback mode.



You will see right picture:



① “Normal”: The files about the videos of the dash cam record. These videos don’t have the locked videos. (front camera record videos and rear camera record videos are all in here )



- ❖ Under this page, when select a video > Click OK Button, Then Like right picture show to press Square button:



- ❖ Click this button, you will enter right picture to edit your video:



② “Crash”: The file about the locked videos of the dash cam record. If your car get collision, the videos are all in this file.



- ✓ Urgent Locked video will be created by camera sensed a collision or vibration (G-sensor on).
- ✓ It can't be auto-recover but only format to save the important moment.
- ✓ Select Lock Video to unlock and delete.
- ✓ You can turn off G-sensor to avoid Locked Records.

③ “Photo”: The files about the photos of the dash cam take Photographs.



## HOW TO PLAYBACK THE VIDEOS ON PC:

### Way 1: use the Memory card reader

The dash cam coming with a Memory card reader, you can insert the Memory card into the Memory card reader, like right picture:



Then plug the Memory card reader into your PC. Then you will see the files (named CARDV) like right picture:

And then you will see some files on your PC. You can playback the video on your PC.



CARDV	2023/3/1 14:39
GPSPlayer	2023/3/1 14:39
SdCard_Benchmark	2020/3/6 15:23

Movie	2023/3/1 14:39
Photo	2020/3/6 15:37
RO	2023/3/1 14:41