

user manual

Safety guidelines and references

Before operating the equipment, please read the contents of this manual carefully and keep it in a safe place for future reference.

Important safety instructions

- Please read the contents of the manual carefully.
- Please keep the manual.
- Please keep all warnings in mind.
- Please follow all instructions.
- Do not use this appliance near water.
- Please clean with a dry cloth only.
- Do not block any vents.
- Please follow the manufacturer's instructions for installation.
- Do not install this appliance near any heat sources such as radiators, heating vents, stoves or other heat generating devices.
- Do not damage the polarized plug or grounding plug.
- Please take care to protect the power cord from being stepped on or pinched, especially at plugs, sockets, and lead-in locations from the unit.
- Use only accessories specified by the manufacturer.
- Use only the mobile stand that came with the unit. When using the stand to move the unit, be careful to prevent injury from tipping over.



- Unplug the unit during thunderstorms or when not using the unit for an extended period of time.
- Please refer all repairs to qualified service personnel. Repairs are required when the unit is in any condition of damage, such as damaged power cord or plug, spilled liquid inside the unit, objects falling into the unit, exposure of the unit to rain or moisture, improper operation, or if it has been dropped.

By using this product, you agree that all disputes between you and "company name or acronym" arising out of or relating in any way to this product (including, but not limited to, disputes over repairs) shall be resolved by binding individual arbitration.

FCC Statement

This equipment has been tested and found to comply with the limits for a Class B digital device, pursuant to part 15 of the FCC Rules. These limits are designed to provide reasonable protection against harmful interference in a residential installation. This equipment generates, uses and can radiate radio frequency energy and, if not installed and used in accordance with the instructions, may cause harmful interference to radio communications. However, there is no guarantee that interference will not occur in a particular installation. If this equipment does cause harmful interference to radio or television reception, which can be determined by turning the equipment off and on, the user is encouraged to try to correct the interference by one or more of the following measures:

- Reorient or relocate the receiving antenna.
- Increase the separation between the equipment and receiver.
- Connect the equipment into an outlet on a circuit different from that to which the receiver is connected.
- Consult the dealer or an experienced radio/ TV technician for help. This device complies with part 15 of the FCC Rules. Operation is subject to the following two conditions: (1) This device may not cause harmful interference, and (2) this device must accept any interference received, including interference that may cause undesired operation.

Caution

Any changes or modifications not expressly approved by the party responsible for compliance could void the user's authority to operate the equipment.


FCC Radiation Exposure Statement


This equipment must be installed and operated in accordance with provided instructions and the antenna(s) used for this transmitter must be installed to provide a separation distance of at least 20 cm from all persons and must not be co-located or operating in conjunction with any other antenna or transmitter. End-users and installers must be provided with antenna installation instructions and transmitter operating conditions for satisfying RF exposure

Warning! Safety Instructions



WARNING: To reduce the risk of electric shock, do not remove the housing (or back cover). There are no user-serviceable parts inside. Consult a service professional.

 This symbol is intended to alert the user to the presence of uninsulated dangerous voltages within the product's enclosure, the value of which may pose a risk of electric shock to persons.

 This symbol is intended to alert the user to the presence of important operating and maintenance (servicing) instructions in the literature supplied with the equipment.

WARNING: To reduce the risk of fire and electric shock, do not expose the product to rain or moisture.

To prevent the spread of fire, be sure to always keep objects with open flames away from this product.

Do not place the product, charger, or remote control in the following environments:

- Do not place the product in direct sunlight;
- Do not place the product in areas of high humidity, such as bathrooms, next to humidifiers, etc;
- Do not expose the product to rain areas;
- Do not allow water droplets to splash on the product, and containers with liquids (such as vases, cups, etc.) are prohibited above the product;
- Do not place the product near flammable materials such as gasoline, candles, etc., and also do not place the product where the air conditioner is blowing directly;

-Do not install or use the product in a place with excessive dust.

ventilation

Please install the product in a well-ventilated place;

Do not install in a confined space such as a bookcase;

Do not place this product on carpet or upholstery;

Do not use cloths or other materials to cover or shield the product while the unit is energized;

Be careful not to touch the vents, which may become hot when the product is used for an extended period of time.

Protect the power cord and plug

-Protect power cords from physical or mechanical damage, e.g. by preventing them from being twisted, crushed, pinched, caught in doorways or stepped on. Pay particular attention to plugs, sockets and places where the power cord protrudes from the appliance;

-Do not move the product while the power cord is plugged in, and do not use a damaged or loose power cord;

-When unplugging the power cord, be sure to hold the plug and do not pull the power cord to unplug the product;

-Do not connect too many devices to the same AC outlet as this may cause fire or electric shock.

Disconnect the unit from the mains

-The power plug is the disconnecting device. In case of emergency, the power plug must be easily accessible;

-Do not allow children to climb or hold the product tightly. Otherwise, the product may tip over and cause serious injury.

Grounding (except for ungrounded equipment)

-Products with a three-pronged grounded AC plug must be connected to a three-pronged grounded AC receptacle;

- Be sure to connect the ground wire to prevent electric shock;
- Do not touch this device or the antenna during a thunderstorm, or you may be electrocuted;
- Make sure that the power cord is securely connected to the product and to the wall outlet; if it is not securely connected, the plug and outlet may be damaged and, in extreme cases, may cause a fire;
- Do not insert metal or flammable objects into the product. If a foreign object falls into the product, unplug the power cord and contact customer service;
- Do not touch the end of the power cord when it is plugged into an outlet or you may be electrocuted.

If any of the following occurs, immediately unplug the power and contact local customer service

- If water or other substances get into the product (e.g., AC adapter, power cord, or inside the product);
- If you smell smoke or other odors coming from the product;
- In thunderstorms or when unused for long periods of time.

Notes on batteries

- Store accessories (batteries, etc.) in a safe place out of the reach of children;
 - Do not short-circuit, disassemble, or overheat the battery;
 - Do not throw the battery into a fire;
 - Batteries should not be exposed to excessive temperatures;
- WARNING: There is a risk of fire or explosion if the wrong type of battery is used for replacement.

Notes on Relocation

- When moving the product, make sure it is turned off, disconnected from the power source, and all cables removed;
- Two or more people may be required to move the product;
- Do not press or apply pressure to the front panel of the product, as this may result in damage to the product, a fire hazard, or injury to persons;
- Please keep moisture-proof packing materials or plastic packaging out of the reach of children;
- Do not subject the product to shock and vibration, do not allow any objects to fall inside the product, and do not drop anything on the screen;
- Do not press the panel hard or scratch it with your hands or sharp objects such as nails, pencils or pens, as this may damage the screen.

Notes on cleaning

- When cleaning, unplug the power cord and then gently wipe with a soft, dry cloth;
- Do not spray water or other liquids directly on the product;
- Do not use chemicals including glass cleaners, air fresheners of any type, insecticides, lubricants, waxes (automotive waxes, industrial

waxes), abrasives, thinner, benzene, alcohol, etc. to clean the product, as these substances may damage the product and its panels;

-Do not hit the touch panel violently, as doing so may damage the touch sensor (touch panel);

-Do not subject the adapter to external shocks; doing so may damage the adapter.

Precautions when using the built-in battery

- If the battery leaks liquid, stop using it immediately and avoid liquid contact with skin and eyes. This may cause blindness or burns. If any abnormality occurs in a body part that has come into contact with the liquid, flush it with plenty of water and consult a doctor;
- Do not dispose of the battery in an improper manner. Doing so may create an explosion or fire hazard. Battery disposal regulations vary from country to country and region to region, so dispose of batteries in the proper manner;
- Do not subject the product to shock (especially lithium batteries).
- Do not expose it to sources of ignition, electric heaters, or direct sunlight, as this may result in electric shock, injury, or fire;
- When charging the battery, make sure the battery is inserted correctly and do not use other power sources or circuits, otherwise there is a risk of battery damage or fire;
- Be sure to use genuine adapters/batteries approved by our company, otherwise it may lead to shortened product life or malfunction, and may also cause overheating, fire, explosion or personal injury;
- Clean the charging terminals with a soft cloth, if the charging terminals are dirty or have foreign objects, the battery will not charge properly;
- If the battery is completely dead and has not been used for a long time, it may not recharge or may shorten the battery life;
- Do not disconnect, disassemble or short-circuit the battery, as this may result in electric shock, injury or fire. If you or a third party disassembles/assembles any part of the product or the battery without contacting a regular service center, you will not be able to obtain any repair service or compensation in the event of a product malfunction, a safety accident, or an injury;
- Do not remove the battery from the product, doing so may result in

electric shock, injury or fire. If you or a third party disassembles any part of the product without contacting a regular service center, you will not be able to obtain any repair service or compensation in the event of a product malfunction, safety accident or injury;

-Be careful that hands, feet, hair or clothing do not get caught in the base and wheels;

-Do not push or kick the product;

-Do not place heavy objects on top of the product;

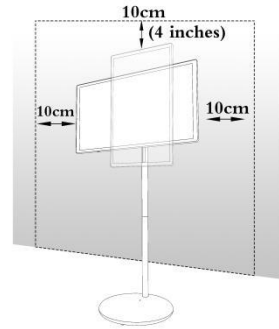
-Do not use this product as a float;

-Do not force the product to rotate beyond its angular limits.

Product Installation Guidelines

Mounting Bracket

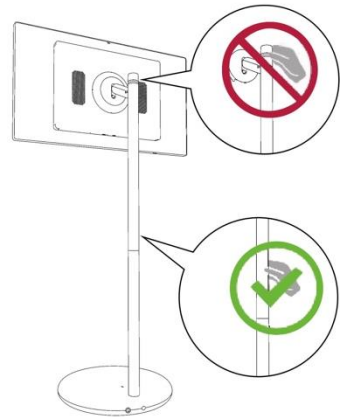
-When installing the bracket, keep a distance of at least 10 cm (4 inches) between the bracket and the ceiling, the left and right walls, and at least 10 cm (4 inches) from the rear wall;



-When assembling or disassembling the stand, hold the stand while tightening or loosening the screws. The bracket may fall, causing damage to the product or personal injury.



This product is heavy, please ensure that at least two people work together when unpacking or moving it. Do not place the product flat; instead, place it upright. The product may fall, causing damage to the product or injury.



-Careful not to get hands or fingers stuck in the stand or height adjustment area. Also, if the product is tilted excessively, it may fall and cause injury;

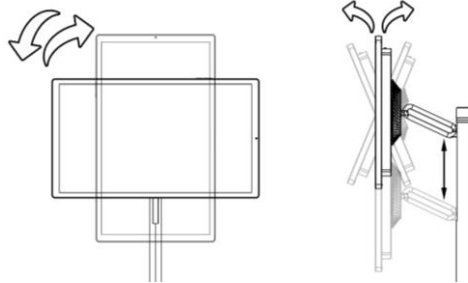
-Do not hold the topmost part of the holder to move the product, hold the middle of the holder and pull it out;

-Do not remove the cable retainer and screws after installing the product;

-If the decorative rod is stained with foreign substances such as cosmetics, gently wipe it with a clean damp paper towel or cloth.

-The height and angle of the display can be adjusted for comfortable

use.



Note: Some applications do not support portrait mode.

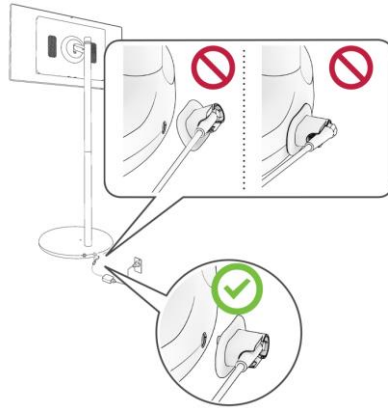
Product assembly video guide

-Product unboxing and installation, please refer to the video inside the QR code below, if you have any questions, please contact the customer service center.

(Add QR code)

Startup Products

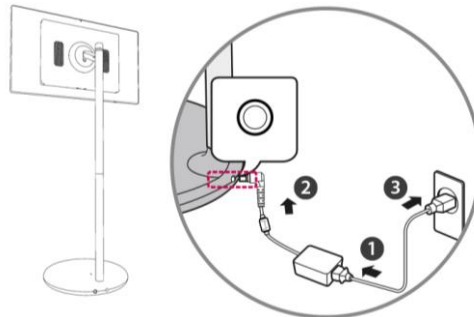
Open the product



Notes:

- When connecting or disconnecting the charging port, hold the adapter plug horizontally for the plugging and unplugging operation;
- Insert the charging port fully and do not move it once it is connected (otherwise damage may occur).

Connecting the power supply



1. Connect the power adapter and power cord;
2. Connect the power device connected to the power cord to the charging port on the back of the product;
3. Plug the power cord into an outlet.

Using the buttons

- Press and hold the button on the side of the product display for 3 seconds to turn it on and use it;
- With the product turned on, press the button on the side of the display, and when a pop-up window appears on the screen, you can affirm the contents of the pop-up window to choose to hibernate or shut down.

Notes:

- The first time you use this product, it may take about 1 minute to turn it on fully, having completed the initialization of the product;*
- When using the product for the first time, please connect the adapter first so that the product can be turned on properly;*
- Be sure to connect the product to the power adapter before inserting the product's power plug into a power outlet.*

Using the touch screen

swipe	Tap the screen;
long press	Press and hold on the screen for 2 seconds or longer;
sliding movement	Swipe the screen up, down, left, or right;
drag	Touch and hold the item you want to move (for example, an application or a widget), and then drag it to the desired location;
Pinch/spread	You can zoom in and out of the screen in the app by placing two fingers on the screen and spreading them open or together.

Notes:

- Some applications may not support touch features such as zooming in and out on the screen;*
- Do not press hard on the screen; gently tap the desired item with your*

fingertip;

-May not work properly if you wear gloves or touch the screen with the tip of your fingernail;

-If the screen is wet or watery, the touch sensor may not work properly.

Battery Level Indicator

The remaining power of the product is indicated in two ways:


1, software tips: turn on the product and enter the system, the upper right corner of the screen will display a more accurate remaining power;

2, LED indicator: when the battery power is sufficient, the LED indicator is blue and always on; when the battery power is reduced to less than 10%, the LED indicator will change from blue to red; when the adapter is connected, the LED indicator is blue and breathing.

Using the remote control

Insert Battery

To install batteries for the Bluetooth remote control, please open the battery cover and put two 1.5V AA batteries correctly according to the \oplus , \ominus markings inside the battery compartment, and then close the battery cover.

 Do not mix new batteries with old ones; this may cause the battery to overheat and leak fluid;

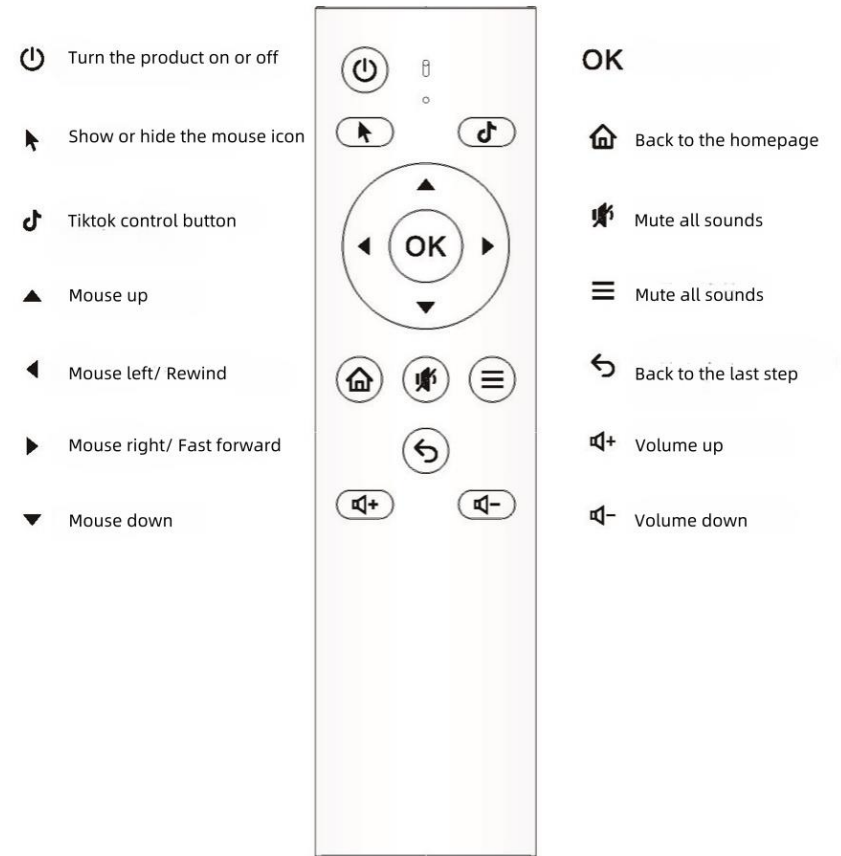
An incorrectly connected battery polarity may cause the battery to burst or leak, which could result in fire, personal injury, or environmental contamination;

This device uses batteries, and your community may have regulations that require you to dispose of these batteries properly for environmental reasons. Please contact your local authorities for information on disposal or recycling of batteries;

Batteries should not be placed in high temperature environments such as direct sunlight, near sources of ignition, etc.

Remote Control Operation Guide

The instructions in this manual are based on the buttons on the remote control. Please read this manual carefully and use the display correctly. This remote control uses infrared light. When using it, it should be pointed in the direction of the remote sensor of the display.



(Some buttons and services may not be available depending on model or region.)

fault resolution

Unable to control the device with the remote control	<ul style="list-style-type: none">-Check that the receiver is not covered with objects like tape;-Check for obstacles between the product and the remote control;-Replace with new fully charged AA batteries.
No images are displayed and no sound is emitted	<ul style="list-style-type: none">-Check that the product is turned on;-Check that the power cord is plugged into an electrical outlet;--Check for power outlet problems by plugging other products into that outlet.
Sudden shutdown of the product	<ul style="list-style-type: none">-Check the power control settings, the power supply may have been interrupted;-Check that the automatic shutdown function is enabled in the setup menu;-If the battery overheats, the product will automatically shut down to protect itself.
Exception Display	<ul style="list-style-type: none">-If the product is in an unknown with a low ambient temperature, then there may be a slight flicker when it is turned on. This is normal and there is no problem with the product. Tiny dot defects may be seen on the screen in the form of tiny red, green or blue spots. However, these defects will not affect the performance of the product. Do not touch the LCD for a long period of time or press it with your finger, as this may cause the screen to appear temporarily distorted;-This panel is a state-of-the-art product containing millions of pixels. On rare occasions, you may see some tiny dots on the screen when viewing the product. These dots are inactive pixels and will not affect the performance or reliability of the product;-Displaying a still image for a long time may cause image residue. Do not display a fixed image on the product screen for a long time.
static (in a signal)	<ul style="list-style-type: none">-The popping noise that occurs when viewing or closing the product is caused by the thermal contraction of the enclosure

	<p>material due to temperature and humidity. This noise is more common;</p> <p>-Circuit hum/panel hum, the power supply will produce this noise when supplying a large amount of current to the equipment, the size of the noise varies from product to product, this sound does not affect the performance and reliability of the product.</p>
--	---



When cleaning the product, be careful not to allow any liquids or foreign objects to enter the gap between the upper, left or right side of the panel and the guide plate (depending on the model).



Be sure to wring out any excess water or cleaner from the wipe and never spray water or cleaner directly onto the product screen.



Make sure to wipe the screen by spraying an appropriate amount of water or cleaner on a dry cloth.

Specification

-Check the label on the bottom of the product for power supply, power specifications and product information.

screen parameter		
sizes	27 inches.	32 inches
response time	6ms	
aspect ratio	16:9	
Maximum display size (mm)	597.5 x 337.6	698.2 x 392.8
resolution (of a photo)	1920 x 1080	
Refresh rate	60Hz	
Color depth	16. 7M	
contrast (balance of black and white in TV screen setup)	1500:1 (Typ.) (projection)	
viewing angle	1	
luminance	250 cd/m ² (Typ.)	
Touch Type	10-point G+G capacitive touch	
Main control board parameters		
system version	Android 13	
CPU	MT 6769 Octa-Core Cortex-A75*2+ Cortex-A55*6	
GPUs	ARM Mali-G52 MP3 820MHz	
RAM	8GB LPDDR4x	
ROM	128 GB uFS2. 1	
communication interface	I-FI 802.11AC/b/g/n protocol, 2.4GHz/5.0GHz BT-5.0	
input interface	HDMI IN 1.4 x 1, USB2.0 x 1	
Structural dimensions		
Screen size (mm)	645 x 371 x 38.5	745.6 x 426.4 x 38.5

Bezel size (mm)	23/23/16/16	
Base size (mm)	d420 x 40	
Overall height (mm)	1320	1350
Lifting height (mm)	200	
Left/Right Angle	L	
Upward/Downward Angle	U	
Battery parameters		
Battery capacity	296Wh	
Charging time	About 4.5h	
Battery life	About 8h	
Others		
Input Power	DC 18V 5A	
Speaker	4 ohm 5 watt x 2	
Outer package size (mm)	TBD	
Net weight (kg)	17.6	20
Gross weight (kg)	19.6	22
replacement (parts)	Charger x 1, Screwdriver x 1, Screws set x 1, User Manual x 1, Bluetooth Remote Controller	