

5G Mobile Router User Manual

Contents

Getting Started	2
First Setup.....	2
Getting To Know Your Device	3
Screen Display	3
Manage 5G Mobile Router Login Password.....	6
Manage 5G Mobile Router Wi-Fi SSID Name, Wi-Fi Password.	6
Installing and Removing 5G Card	7
Connection Scenarios	7
Using The Power Adapter to Charge 5G Mobile Router	8
Restore Factory Setting	9
USB Tethering.....	10
WPS.....	10
Home page & Status	11
FAQ.....	12

Getting Started

Thank you for choosing 5G Mobile Router. 5G Mobile Router allows you to access 5G NR high speed wireless network via Wi-Fi.

Note :

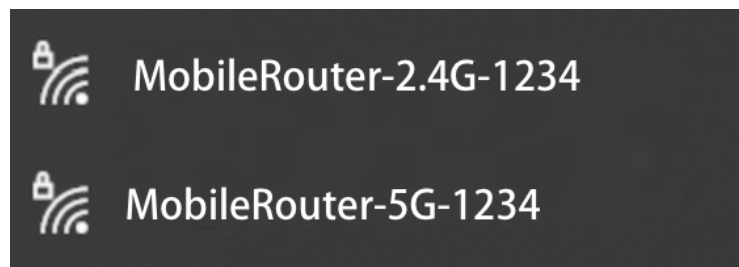
This guide briefly describes the appearance of 5G Mobile Router and the procedures for using 5G Mobile Router.

First Setup

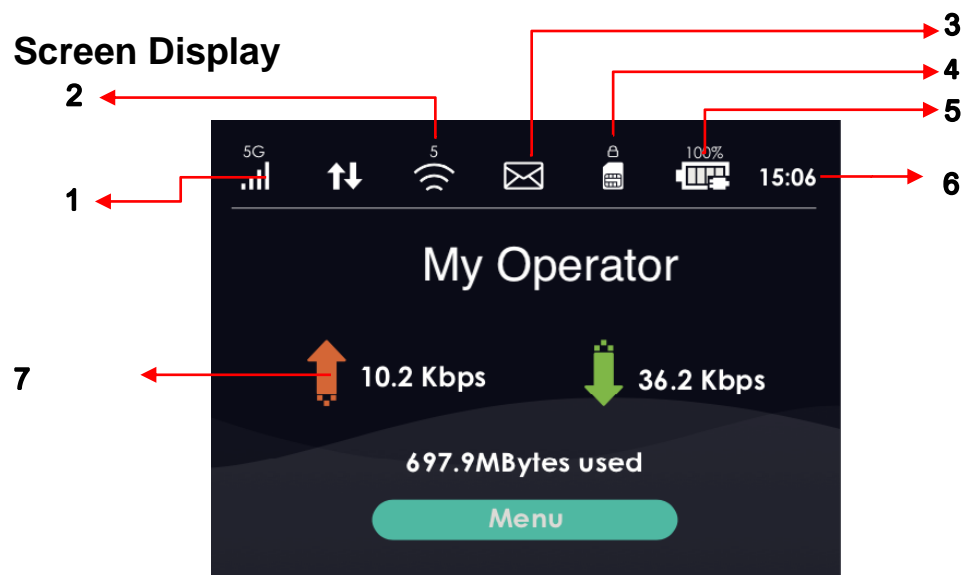
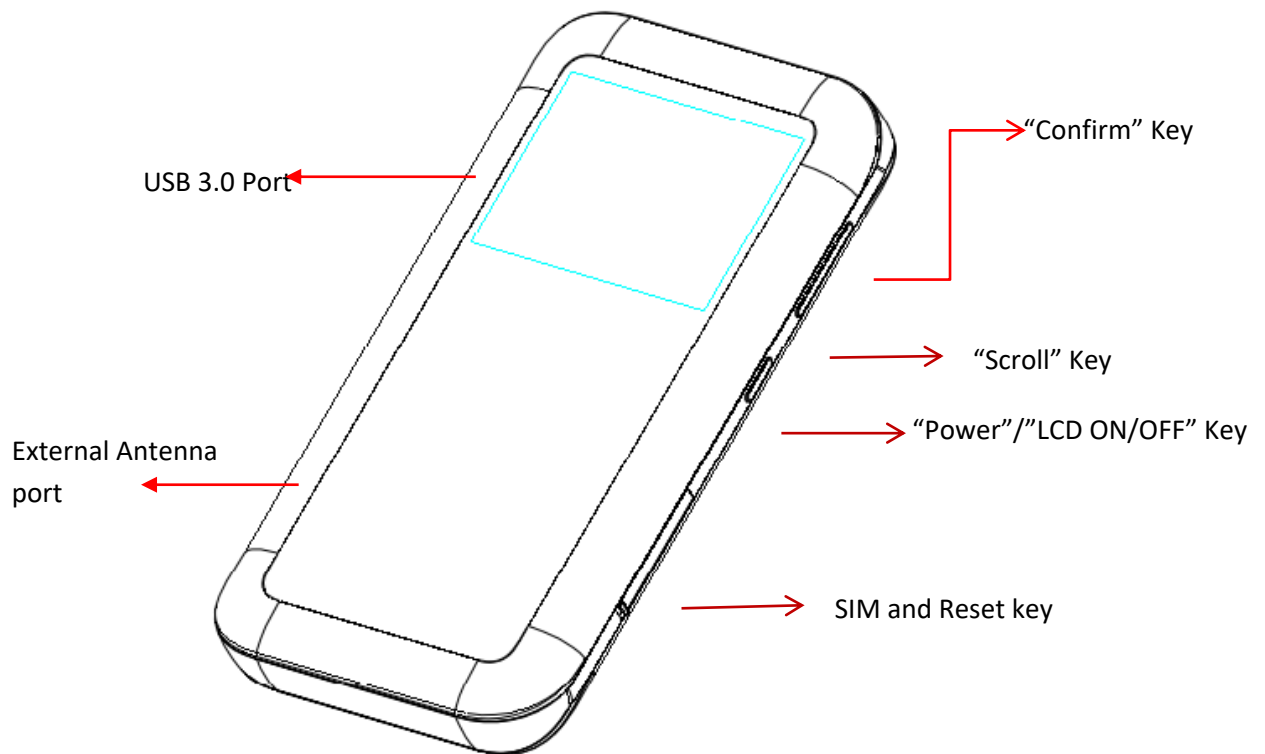
1. Click View available wireless networks in your devices
2. Choose 2.4GHz or 5GHz Mobile Router Wi-Fi name (SSID), example: MobileRouter-2.4G-1234, MobileRouter-5G-1234.

Default SSID can be found on the screen of 5G Mobile Router:

- a. Short press on "Power" Key to wake up the screen.
 - b. Short press on "Confirm" Key to enter main menu.
 - c. Short press on "Confirm" Key to check SSID & Password menu.
3. Input 5G Mobile Router password. Default password can be found on LCD screen of 5G Mobile Router.



Getting To Know Your Device

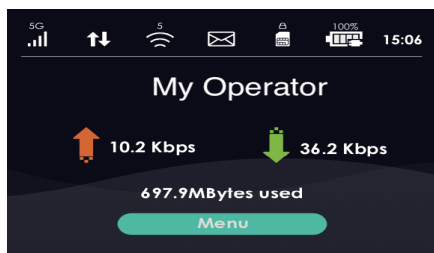


1. Signal strength/Network Mode
2. Wi-Fi indicator & connected device
3. New SMS indicator

4. SIM indicator
5. Battery level
6. Time
7. Data consumed



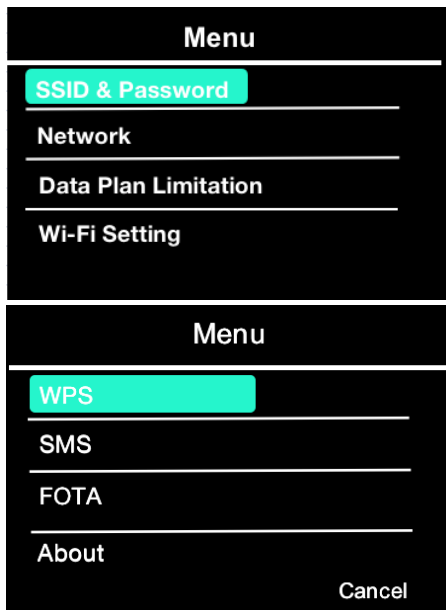
Long press the "Power" Key for 4~5 seconds will turn on the device, "Powering on" will be displayed. Then "MiFi is starting up" will be displayed for 35 seconds before entering the home screen.



Home screen

Contents shown are :

- SIM Card is connected to 5G network
- 5G Mobile Router have 5 users connected.
- New SMS
- Battery percentage is 100% and be charging
- Now time is 15:06
- Current download/upload data and total data consumed.



Menu Screen

Will displaying main menu.

1. SSID & Password
2. Network Connection
3. Data Plan Limitation
4. Wi-Fi Setting
5. WPS
6. SMS
7. FOTA
8. About

How to access this page?

Press "Confirm" Key from Home Screen. Then press "Scroll" Key to scroll down choose function from the menu. Short press on "Confirm" Key to enter function menu page.



SSID & Password Screen

Content displaying as below :

- 2.4GHz SSID Name and password
- 5GHz SSID Name and password

How to access this page?

When scrolling on SSID & Password, short press on "Confirm" key to enter this page.



“Power”/”LCD ON/OFF” Key Function:

1. Long press (6~7 seconds) on any page, will turn on/off the device.
2. Short press to wake up/turn off the screen.

“Confirm” Key Function:

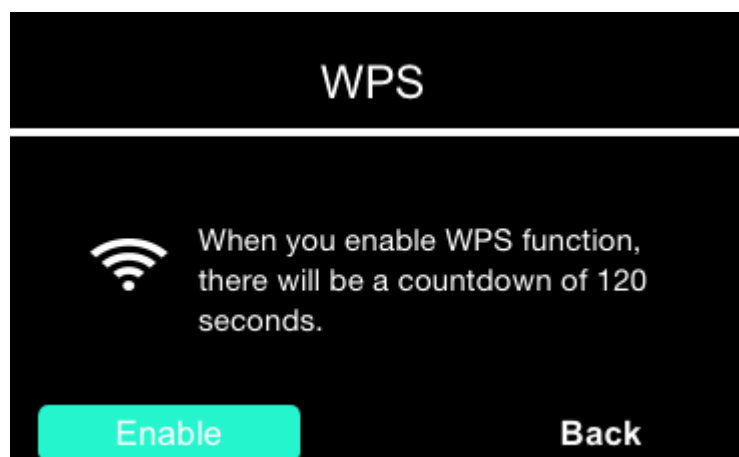
1. Main function to enter different menu or enable/disable the option.

“Scroll” Key Function:

1. Main function to scroll down to select the option on the screen.

WPS/Menu Button Function:

1. Short press on “Power” Key to wake up the screen, then short press on the “Confirm” Key to enter main menu
2. Short press on “Scroll” Key to choose WPS menu, then short press on the “Confirm” Key to enter the menu.
3. Short press on “Confirm” Key to make WPS on.

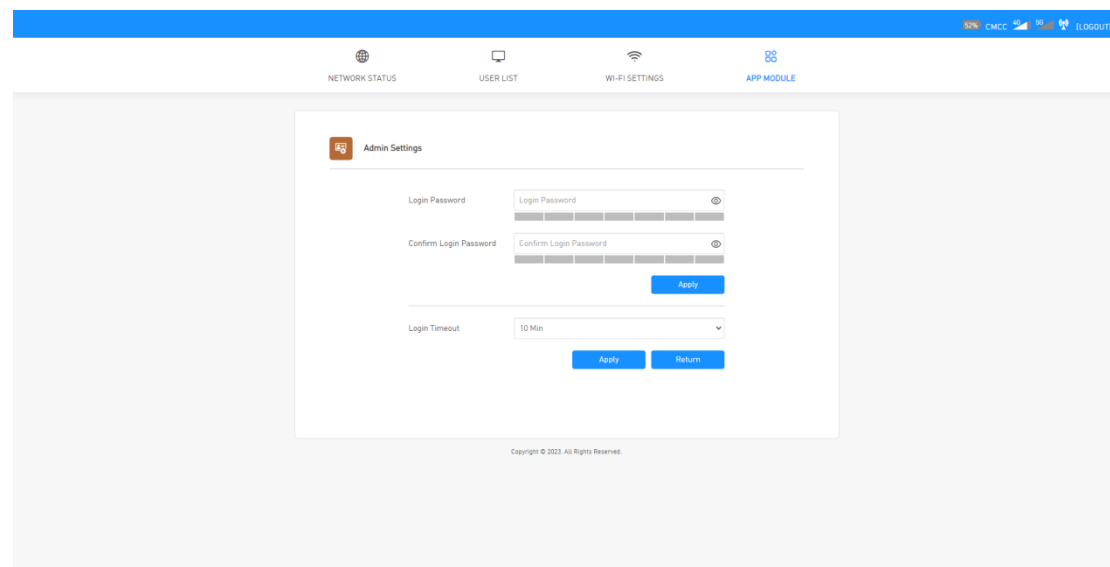




Manage 5G Mobile Router Login Password

Login in to the management page where you can set the parameters of 5G Mobile Router.

1. Connect your computer to 5G Mobile Router via USB port or Wi-Fi.
2. Login to management page <http://192.168.8.1> using web browser.(default username and password are admin/admin)
3. Go to APP Module -> Admin Settings.
4. Change Login Password, and click Apply button.

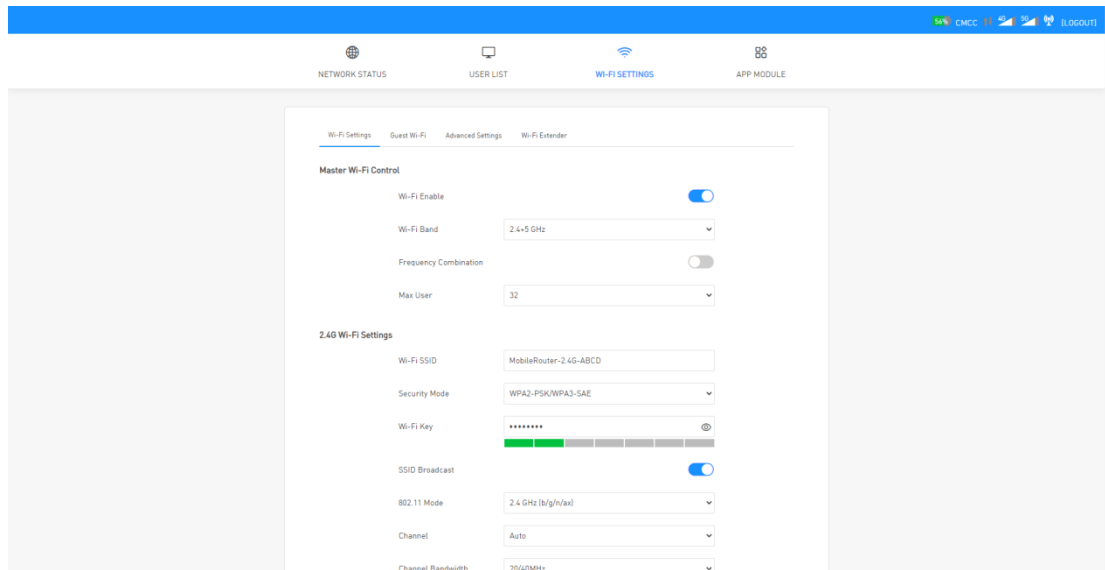


Manage 5G Mobile Router Wi-Fi SSID Name, Wi-Fi Password.

Login in to the management page where you can set the parameters of 5G Mobile Router.

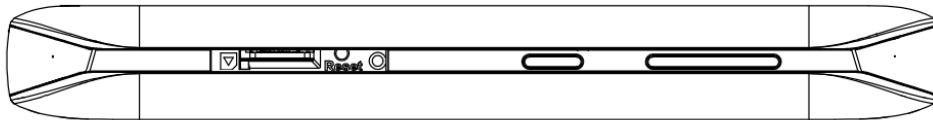
1. Connect your computer to 5G Mobile Router via USB port or Wi-Fi.
2. Login to management page <http://192.162.8.1> using web browser.(default username and password are admin/admin)
3. Go to Wi-Fi Settings.

4. Change Wi-Fi SSID Name, Wi-Fi Key/Password and other settings which you want to change, then click Apply button



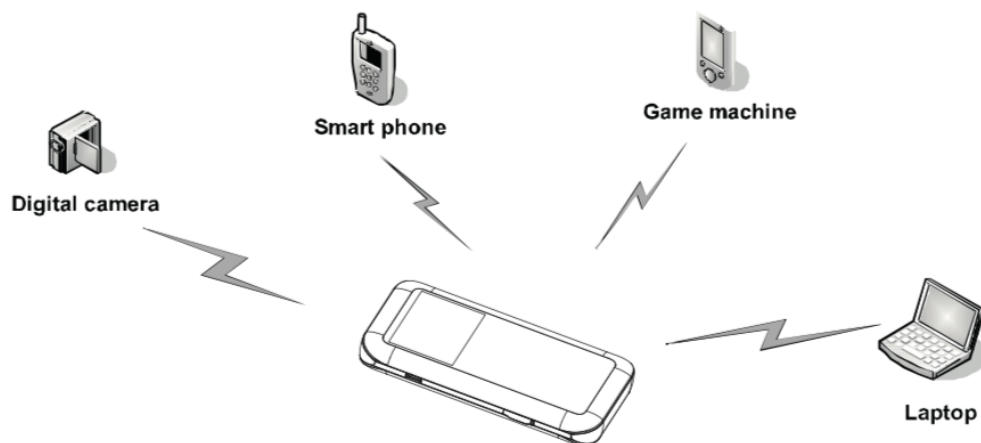
Installing and Removing 5G Card

1. Open SIM cover on 5G Mobile Router.
2. Insert the SIM card gently into the SIM card slot in the direction shown in the figure below until it clicks.
3. Close SIM cover of 5G Mobile Router

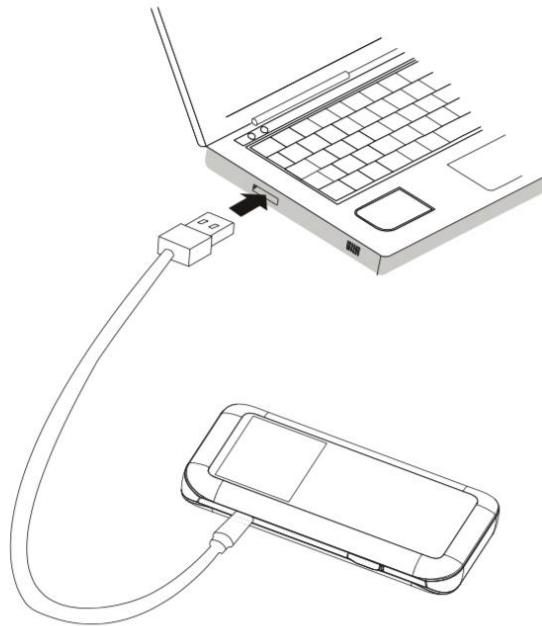


Connection Scenarios

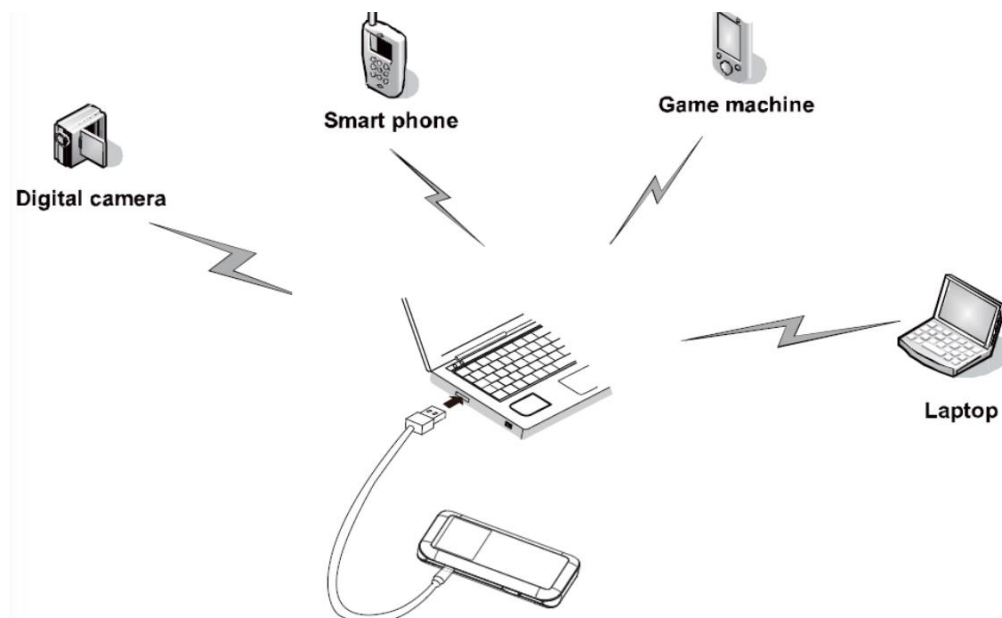
Scenario 1: Multi-device Internet access using Wi-Fi connection



Scenario 2: One-device Internet access using computer using USB (USB Tethering)

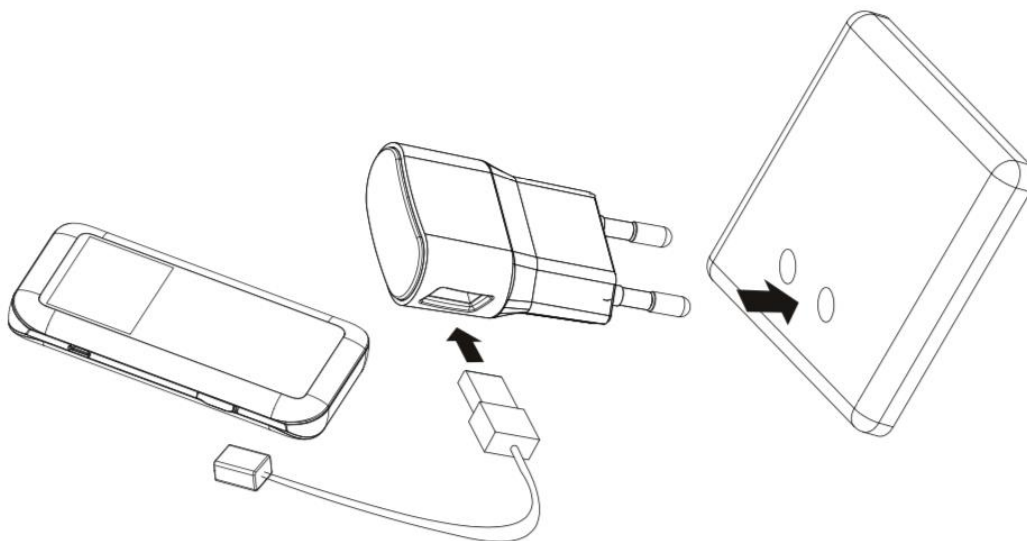


Scenario 3: Multi-device Internet access using both Wi-Fi connection and USB Tethering



Using The Power Adapter to Charge 5G Mobile Router

Connect the Mobile Router to the power adapter's USB port, and connect the power adapter to a power outlet.



Charger Head

Charger Head **not included** in package bundling, please use the Charger Head with following specification.

Technical Parameters	Charger Head Specification
Input	100-240V~50/60Hz 300mA
Output	5.0V/3.0A
Maximum Output Current	3600mA



Note:

- Do not store the charge in an area of dampness or high temperature. Don't use the charge under high-temperature, high-humidity or lightning environment.

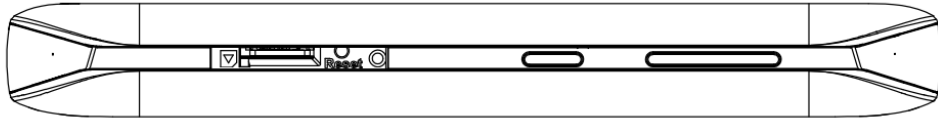
If you want to charge Mobile Router with Car charger, use the Car charger with following specification

Technical Parameters	Car Charger Specification
Input	DC 12~24V
Output	DC 5.0V/1.0A
Maximum Output Current	1000mA

Restore Factory Setting

If you are uncertain of which settings you have configured or changed, you can restore the factory defaults that come with 5G Mobile Router, and reconfigure the device settings.

- Power on 5G Mobile Router, press and hold the Reset button for 3 seconds to restore to factory default settings.
- Power on 5G Mobile Router, and connect to it. Login to management page <http://192.168.8.1> using web browser (default username and password are admin/admin). Go to APP Module > Configuration backup, click "Factory Default Settings" button to restore settings to factory default settings.

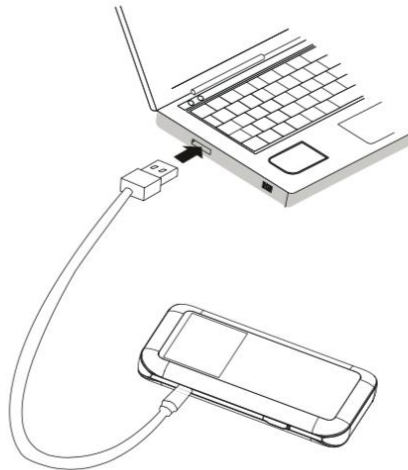


Note:

Reset button on device will delete all the device's user-defined settings and restore to factory defaults.

USB Tethering

You can use your 5G Mobile Router internet connection through USB cable.



a. OS Support

- Windows 7 (32/64 Bit),
- Windows 8 (32/64Bit),
- Windows 10 (32/64Bit),
- Mac OS X 10.7/10.8/10.9/10.10/10.11
- Ubuntu, Fedora, Open Suse, Linux Mint.

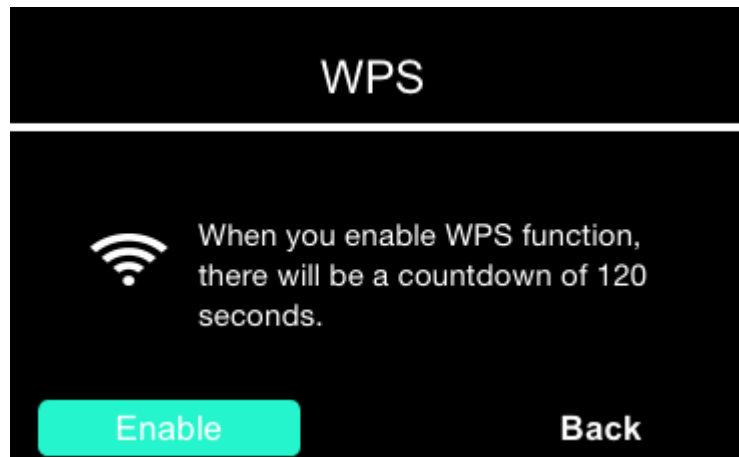
b. USB Tethering on Windows/Mac OS

Device can work smoothly when connect 5G mobile Router on Windows/Mac OS without installing any drivers.

WPS

Wi-Fi Protected Setup (WPS) is a special way to connect Wi-Fi automatically. You can simply enable WPS function on the screen and go to advanced WLAN setting on your PC/Smartphone.

Note: The function of WPS only supports the Wi-Fi Security Mode as follows: Disabled, WPA2-PSK, WPA-PSK/WPA2-PSK and only supports the WPA Option as follows: AES, AES+TKIP.

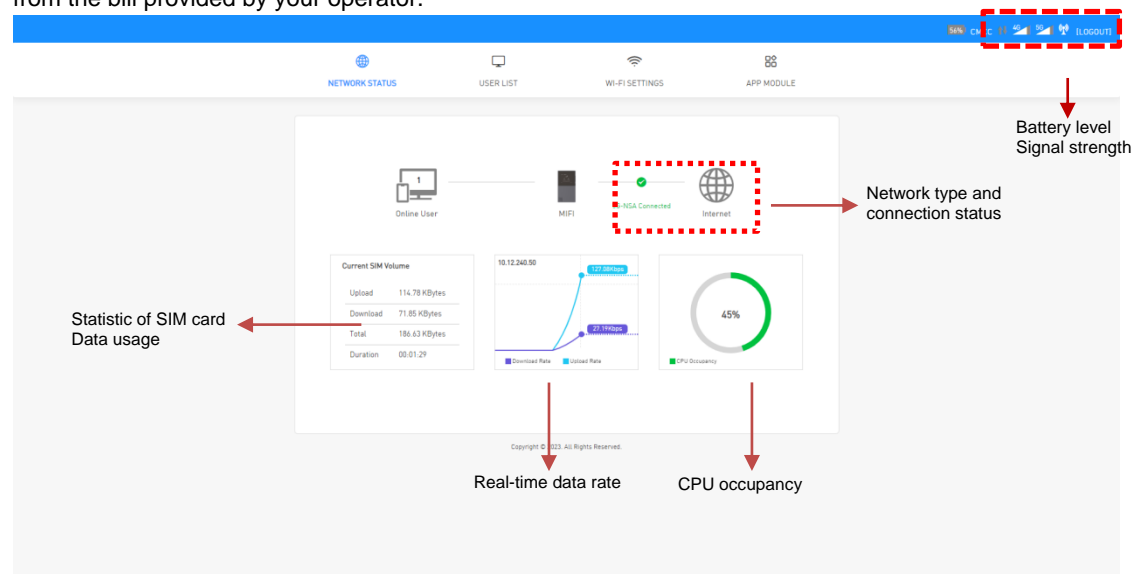


Home page & Status

1. Home page:

You can see battery level, signal strength, network mode, connection status, data rate, data usage and so on from home page, you can refer to below picture.

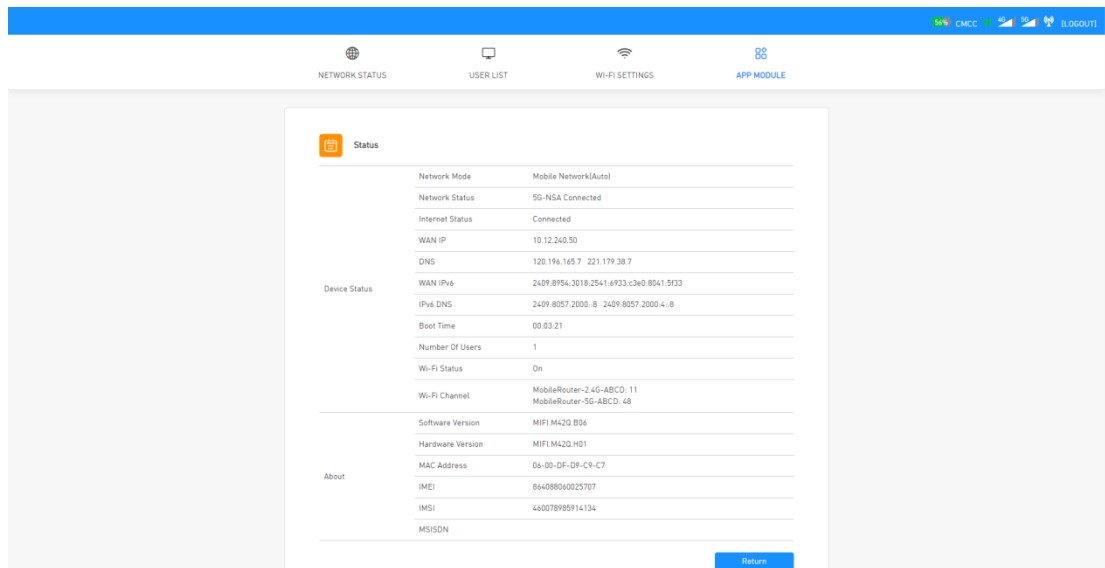
Note: Traffic statistics are provided for your reference only. Accurate traffic records can be obtained from the bill provided by your operator.



2. Status:

Login to management page <http://192.168.8.1> using web browser (default username and password are admin/admin), then go to APP Module -> Status page.

- Device Status:** You can check device status such as Network mode, network status, internet status and so on.
- About:** You can check device parameters such as software version, hardware version, MAC address, IMEI, IMSI, and MSISDN.



FAQ

1. Q: What's the range of the Wi-Fi supported?
A: 5GHz Wi-Fi can support around 90 meters in non-obstruction outdoor condition.
2. Q: How many users can access simultaneously?
A: It can support 32 users Wi-Fi users simultaneously.
3. Q: What to be done when forget the Wi-Fi Key/Password?
A: Use WPS function, or see the password via 5G Mobile Router screen, or Reset the device. To reset the device, Long press Reset button in power on condition for 3 seconds and Wi-Fi settings will be restored to factory defaults.
4. Q: Can USB tethering and Wi-Fi work simultaneously?
A: Yes, USB tethering and Wi-Fi can work simultaneously.
5. Q: What if 5G Mobile Router Web management page is not opening?
A: Disconnect any of existing internet connection first so that 5G Mobile Router management page can be opened.
6. Q: What to be done if Multi-Network IP Address conflict?
A: Disable other network devices or disconnect other Internet connections from the connected device, and then restart Mobile Router.
7. Q: What to do if cannot login Web management Page?
A: Try the following steps:
 - 1) Disconnect other network connections, such as an Ethernet or Wi-Fi connection.
 - 2) Clear the cookies and caches of IE browsers.
 - 3) Close all IE browsers and Open again.
 - 4) Check the name and password of administrator is correct.
 - 5) Remove and then insert 5G Mobile Router, or restart the computer.
8. Q: What should I do if the device can not connect to the 5G Network?
A: Try the following steps:
 - 1) Please check if the SIM card has got 5G service.
 - 2) Please check there is covered by 5G signal.

- 3) Please go to App Module -> Network Settings, check the network mode is not 4G only in web page.
9. Q: After firmware updated, the web UI is showing something wrong. Like title display interface code, logo or icon not updated in the new firmware UI?
- A: Try the following steps:
- 1) Please Clear browsing cache of the browser and restart then check it again.
 - 2) After clearing browsing cache the issue is still there, please contact device supplier for help.
10. Q: Why input <http://192.168.8.1> in browser can't open the web page?
- A: Try the following steps:
- 1) Ensure your computer is connected to 5G mobile Router through a USB cable or Wi-Fi.
 - 2) Go to APP Module -> DHCP & DNS, check the gateway which connected to 5G Mobile Router's terminal and input that gateway in browse.
 - 3) Input the URL: <http://my.5g.device> to open web page
11. Q: How can I use external antenna?
- A: Try the following steps:
- 1) You can buy TS-9 port external antenna by yourself.
 - 2) Insert external antenna into TS-9 port on 5G Mobile Router.
 - 3) Put the external antenna at where you want, and go to APP Module -> Position recommend to check the signal at current position.

FCC Warning

This device complies with part 15 of the FCC Rules. Operation is subject to the following two conditions: (1) This device may not cause harmful interference, and (2) this device must accept any interference received, including interference that may cause undesired operation.

Note: This equipment has been tested and found to comply with the limits for a Class B digital device, pursuant to part 15 of the FCC Rules. These limits are designed to provide reasonable protection against harmful interference in a residential installation. This equipment generates, uses and can radiate radio frequency energy and, if not installed and used in accordance with the instructions, may cause harmful interference to radio communications. However, there is no guarantee that interference will not occur in a particular installation. If this equipment does cause harmful interference to radio or television reception, which can be determined by turning the equipment off and on, the user is encouraged to try to correct the interference by one or more of the following measures:

- Reorient or relocate the receiving antenna.
 - Increase the separation between the equipment and receiver.
 - Connect the equipment into an outlet on a circuit different from that to which the receiver is connected. —
- Consult the dealer or an experienced radio/TV technician for help.

Note: The Grantee is not responsible for any changes or modifications not expressly approved by the party responsible for compliance. such modifications could void the user's authority to operate the equipment.

The device has been evaluated to meet general RF exposure requirement. The SAR limit of USA(FCC) is 1.6 W/kg averaged over one gram of tissue. Device types 5G Mifi with M46Q (FCC ID: 2BEPN-M46Q) has also been tested against this SAR limit. The highest reported SAR values for body - worn is **1.147W/kg**. The Max simultaneous SAR is **1.517 W/kg**. This device was tested for typical body - worn operations with the back of the handset kept 10mm from the body. **To maintain compliance with FCC RF exposure requirements, the use of accessories should maintain a separation distance between the user's bodies mentioned above, the use of accessories should not contain metallic components in its assembly, the use of accessories that do not satisfy these requirements may not comply with FCC RF exposure requirements, and should be avoided.**