

Q6

User Manual

4K & 5G WiFi Dash Cam



WARRANTY



REGISTER WITHIN THE FIRST 30 DAYS

Scan this QR Code Using your iPhone or
Android's Camera to start your Product
Registration.

Or visit the link using mobile or PC/MAC:
peztio.com/apps/product-registration

WATCH GUIDE VIDEOS

WATCH GUIDE VIDEOS

Thank you for choosing a Affver Dash cam.

The more familiar you are with your dash cam, the better effect you will have on the road. We therefore strongly suggest you watch our guide videos.

1 Visit the link directly

https://www.youtube.com/playlist?list=PLUKmX2ADhfGFgXpQGfMvGPtR7W_TTa2jb



2 Scan the code with your cellphone



[CONTACT US](#)

NOT SATISFIED / NEED SUPPORT?

Dear customer,
If you are not satisfied with our product or have issues while using our product, please feel free to contact us before you return the product to us, we will try our best to help you!

CONTACT US HERE

OUR EMAIL ADDRESS:
support@affver.com

Scan the code with your
cellphone and you can
email us directly!



OUR WhatsApp

Scan the code with your
WhatsApp and chat with
our support right now!



Typically we will reply to you in 24 hours on
business days!

MUST READ

MOST IMPORTANT

- 1 Please select the correct WiFi name for connecting to your dash cam:

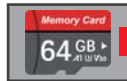


WiFi Name: Peztio-Q6-****

Password: 12345678

- 2 64GB SD card is included in Package. If you find the provided memory card's capacity too small, you can consider getting a larger one from Amazon. We suggest inserting a SAMSUNG / PNY Class 10 U3 speed micro SD card (up to 256GB) into this Q6 dash cam. To make a purchase, simply search for **B09WB1857W** on Amazon.

***The 64GB SD card is already inserted into the camera in package.
If you receive the camera without a SD card, please get in touch with us promptly to receive one.



INCLUDED

- 3 The camera voice can be turned off if you don't want to let it announce every time it starts a new recording.

Peztio App → Camera Settings → Speaker Volume → Off

- 4 If you need to use the 24-hour parking monitoring function, you can get a Type C hardwire kit through our ongoing promotion. Please email or text us via email address or WhatsApp.

Or buy separately at the link:
<https://www.amazon.com/dp/B0CR1DVJ87>



OPTIONAL

READ BEFORE USE

Customers Frequently Asked Questions

1 Is your phone unable to locate the camera's WiFi network for formatting the new memory card in the app?

It might be because your phone does not support the 5GHz WiFi band, while the camera uses the default 5GHz band. To resolve this, switch off the camera, remove the memory card, and then power it on again. Swipe left to access the WiFi settings and switch to the 2.4GHz WiFi band. This adjustment will enable your phone to detect the camera's WiFi network.

2 Camera won't connect to the app.

When opening the app for the first time, please make sure to authorize the App with the album, location, WLAN & cellular data, otherwise, the connection will fail. Please contact us for support when you can't get this issue resolved.

3 Peztio APP keeps saying "The card is abnormal, please format or replace the memory card" after inserting an SD card or formatting it in the settings.

(1) The new SD card is required to be formatted by button or APP. Please do NOT format it on computer. You can format it by pressing lock button once or connecting Peztio APP as below:

Peztio APP→Connect Camera→Camera Settings→Format the SD CARD

(2) Ensure that you are using the recommended SD card with the following specifications: **CLASS 10, U3 Speed, and a maximum capacity of 256GB**. Using any other card might result in a malfunction. For the Q6 dash cam, you can find the recommended SD card on Amazon by searching for ASIN: **B09WB1857W**.

READ BEFORE USE

4 How to use the 24 hours parking monitoring function?

To enable the 24 hours parking monitoring function on the Q6 dash cam, you will require a Type C hardwire kit (NOT included in the package). You can find the recommended kit on Amazon by searching for **B0CR1DVJ87**. If you prefer to get the FREE hardwire kit from us by joining the promotion, please feel free to reach out to us via WhatsApp or email.

5 Every time you get into the car, do you need to connect to the camera's WiFi signal for it to start recording?

No, you don't have to connect your cellphone WiFi every time. The dash cam will record automatically as long as it's powered on.

6 After changing the password, when you try to connect the camera again, it indicates that the password is incorrect.

The reason for this is that you haven't powered off the camera after changing the password. To resolve it, press and hold the lock button for 6 seconds to reset the password to 12345678, then proceed to change the password, power off the camera, restart it, and reconnect it with new password.

7 The camera keeps turning on and off repeatedly.

Kindly ensure that you are using our original power cable. Additionally, this issue might be due to a problem with the memory card. Try using another memory card to see if it resolves the problem. If the issue persists, please get in touch with us for further support.

Please scan the code to chat with our technical team on Whatsapp, we will reply you in 24 hours on working days!



INDEX

| | | | |
|--------------------------------|----|--------------------------------------|----|
| <i>Tips before Use</i> | 1 | <i>Touch Screen</i> | 22 |
| <i>Package Contents</i> | 4 | Operation Guide | 22 |
| Camera Overview | 5 | Home Screen Themes | 22 |
| Button Functions | 6 | System Settings | 24 |
| Indicators | 6 | <i>Camera Settings in App</i> | 26 |
| <i>Installation</i> | 7 | Video Settings | 26 |
| Insert/Remove a SD Card | 7 | Advanced Settings | 27 |
| Format the SD Card | 8 | 24H Parking Mode | 28 |
| Install Positions | 10 | General Settings | 30 |
| <i>WiFi Connection</i> | 13 | Reset the Camera | 30 |
| Understanding WiFi Feature | 13 | Set A New Password | 31 |
| Download App | 14 | <i>Contact Us via App</i> | 31 |
| Connect WiFi | 16 | <i>Specifications</i> | 32 |
| Start to Use | 18 | <i>FAQ</i> | 33 |
| <i>App Introduction</i> | 19 | <i>Thank You</i> | 36 |
| App Interface Introduction | 19 | <i>Warranty Registration</i> | 36 |
| Check the Albums via App | 20 | <i>Contact Us</i> | 36 |
| Check the Albums on PC | 21 | | |

PACKAGE CONTENT

PACKAGE CONTENT



MAIN UNIT

Q6 Dash Cam
4K & 5G WiFi
Touch Screen



64GB SD Card Included

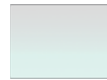
ACCESSORIES



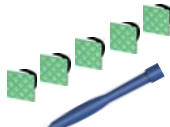
Car Charger



Adhesive Pad



Electrostatic Film




Wiring Tools



User Manual




Warranty Card

-  1. 64GB SD card is included in Package. If you find the provided memory card's capacity too small, you can consider getting a larger one from Amazon. We suggest inserting a SAMSUNG / PNY Class 10 U3 speed micro SD card (up to 256GB) into this Q6 dash cam. To make a purchase, simply search for **B09WB1857W** on Amazon.
2. If there is no cigarette lighter port in your car, please email us support@affver.com to get a USB C cable from us.




CAMERA OVERVIEW



BUTTON FUNCTIONS

| BUTTON | NAME | FUNCTIONS |
|---|----------------|--|
|  | LOCK BUTTON | Press-Once: To lock the video |
| | | Long-Press(3 seconds): To start/stop recording |
| | | Long-Press(6 seconds): To restore factory default settings |

INDICATORS

| | |
|---|--|
|  | Blinking Blue: Camera is recording |
|  | Solid Blue: Camera stop recording |
|  | Red Off: Camera is powered off |



POWER REQUIREMENT

For the customer not using the original car charger to supply power for the Q6 dash cam, please make sure the power can reach 5V/1.5A, otherwise the dash cam may not able to function properly. **We strongly recommend using the car charger that came with package.**

INSTALLATION

WARM TIPS

Our default settings of the Q6 dash cam allow you to use the camera as soon as you get it without modifying any settings. Remember to format the SD card in Peztio APP before using it for the first time.

1 INSERT / REMOVE THE SD CARD

Our package include a SD card, if you find the provided memory card's capacity too small, you can consider getting a larger one from Amazon. We suggest inserting a SAMSUNG / PNY Class 10 U3 speed micro SD card (up to 256GB) into this Q6 dash cam. To make a purchase, simply search for **B09WB1857W** on Amazon.



How to install the SD card

Turn off the Q6 before inserting the SD card. Aligning the brand logo of the card facing towards the screen of the camera. Then push the memory card into the card slot, until a "click" sound is heard in the card slot, indicating that the memory card is inserted properly.



INSTALLATION - FORMAT THE SD CARD

How to remove the SD card

To remove the SD card, please gently push its edge inward until a "click" sound is heard in the card slot, then release your finger and it pops out. Please pull it out of the slot.



Please Note that

- ▶ If your Q6 dash cam has issues with **AUTO POWER ON AND OFF**, that is caused by your MEMORY CARD. (NOT THE CAMERA ISSUE) - Please Contact US for professional support.
- ▶ Please note that every SD card has its life span, when your Q6 keeps turning on/off frequently and the videos are not saved, your SD card may reach its life span, please replace a new SD card.
- ▶ Never remove the SD card from Q6 when it is on, that will lead to the dash cam shutting down immediately and corruption of saved videos.

2 FORMAT THE SD CARD BY BUTTON OR APP

For the SD card inserted into the Q6 for the first time, the Q6 will prompts "please format the SD card" after booting up. Formatting can be done in two ways:

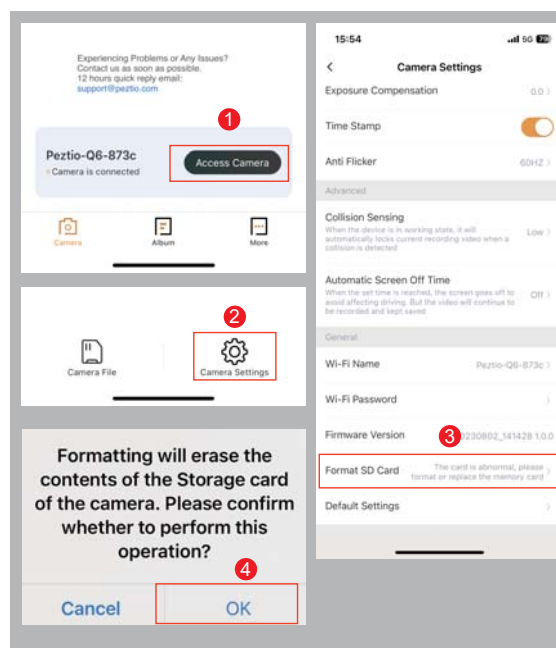
(1). Press the lock button. When you hear the formatting prompt, press the lock button once and wait for at least 2 seconds for the formatting to complete.

*** Please note that the camera's time may not be synced with your phone's time at this point. Connect to the app, and it will automatically synchronize the correct time.

(2). Use the app to format the memory card. See the instructions below for details:

INSTALLATION - FORMAT THE SD CARD

- a** Connect Peztio APP and Access Camera (See Page13).
- b** Click the "Camera Settings"
- c** On camera settings page, scroll down until you see "FORMAT SD Card", then choose "Format SD Card", and click "OK" to confirm to format the memory card.



INSTALLATION - INSTALL THE CAMERA



REMINDER

1. We recommend formatting the memory card once a month to ensure normal operation of the dash cam.
2. Please do not use bad cards or low-speed cards on the dash cam, as it is easy to stop or lose the recording due to a failure of the memory card.
3. Before formatting the memory card, please check the emergency video folder in the SD card to see if there are any videos that need to be saved separately, so as not to delete important videos by mistake.

3 INSTALL Q6 TO WINDSHIELD



- a** 1. Installation Area: Most of our customers will install their Q6 next to the rearview mirror and close to the passenger side. Park your car in a safe and well-lit area before you start the installation.
- b** Please use wet & dry tissues to repeatedly wipe the place you choose to install the dash cam in order to clean the dust particles on the windshield and the grease evaporated.
- c** Stick the Electrostatic Film on the place you desire.

ABOUT ELECTROSTATIC STICKER

(1) Since the adhesive strength is strong on both sides and it is difficult to peel off once it is pasted, it will be troublesome if the pasting position is incorrect. Therefore, we design the electrostatic sticker to attach to the windshield first, then stick the bracket with 3M Adhesive on the electrostatic sticker. You can easily readjust location by sticking the 3M Adhesive on electrostatic sticker and peel it off.

(2) Re-sticking may weaken the adhesive strength of the tape and cause it to fall off. If you need more accessories, please CONTACT US.

- d** Tear off the adhesive film of the sticky pad and stick it onto Electrostatic Film.
- e** Connect the car charger to the car cigarette lighter socket, then insert the USB end of the charger into the Type C power port of the camera. Use the car wire trim tools to run the cable through the A-Pillar.



⚠ REMINDER

If your car does NOT have the cigarette lighter socket for the dash cam, please CONTACT us to get a spare Type C power cable.

4 TEST & ADJUST

After the power cable is connected correctly, please spark your engine to see if the Q6 dash cam power on successfully and start recording automatically.

a **Auto Power ON:** After the car is started, the camera can be powered on immediately. It will give out voice: "Start Recording".

b **Auto Power OFF:** After the car is shut off, the camera will also be turned off.

c **Test the WiFi Connection**

Please download the app and get the dash cam linked with your cellphone, to test if the WiFi module works well. (see page 13 of this booklet)

d **Auto Phone Time Synchronization**

After you successfully connect your cellphone with the dash cam via WiFi, Q6 dash cam will auto sync the time with your cellphone, and you don't need to set the time via the dash cam yourself.

e **Remove the Q6 Camera from Your Car**

For the situation when you want to remove Q6 from the windshield, please hold the camera and disassemble it from the mount.

f **Adjust the Angle**

Please adjust the lens up or down to get the view you want.



WiFi CONNECTION



THINGS YOU HAVE TO KNOW

WiFi Function

Q6 dash cam has built-in WiFi module, so you can use your mobile phone to wirelessly pair with the camera through the WiFi, and instantly get the video from the dash cam. Apart from that, you can easily watch the live feed, view, download and share videos with family and friends. In summary, just like you connect a Bluetooth speaker to your smartphone for wireless music playback, the dash cam uses a WiFi signal (instead of Bluetooth) to pair your smartphone to the Q6 in the same way.

WiFi Valid Range

The valid range of the built-in WiFi signal of the Q6 dash cam is 10FT. Please ensure that the range of the mobile phone and the camera is within this range, and no objects block it, otherwise the signal will be easily disconnected.

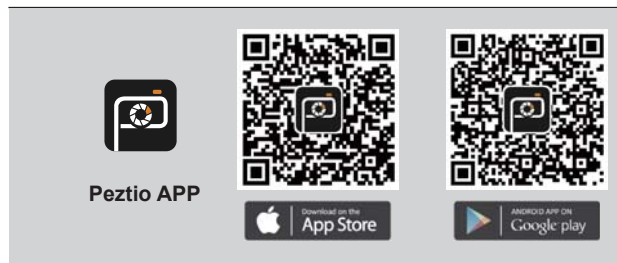
⚠ No Remote Monitor

Q6 dash cam does NOT support remote monitor. Because the WiFi signal will not be turned on when the car is not powered on and the valid range of WiFi is 10FT. Therefore, the remote monitor function cannot be realized if both above conditions are not met.

WiFi CONNECTION - DOWNLOAD THE APP

1 DOWNLOAD 'Peztio' APP

Please scan the QR code of the relevant version below to download the APP and install it.



Or search for 'Peztio' in App Store or Google Play Store to download and install it on your phone.



REMAIN POWER SUPPLY

Please remain the Q6 connected to the power while you are operating the WiFi function, otherwise the dash cam WiFi will become offline.

2 AUTHORIZE PERMISSION



REMINDER

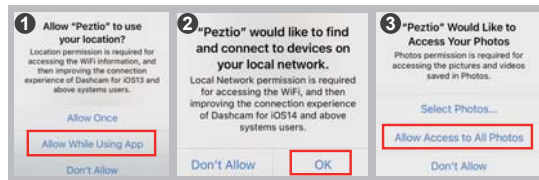
Just open the 'Peztio' app you've downloaded, and authorize the permissions as below. When opening the app for the first time, please make sure to authorize the App with album, location, WLAN & cellular data, otherwise the Peztio app won't work correctly.

WiFi CONNECTION - AUTHORIZE PERMISSION



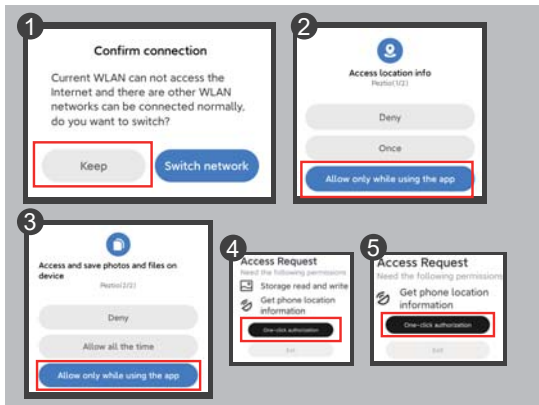
iOS USERS MUST KNOW

If you get these notification windows while using the APP, ensure you choose "Allow" or "OK".



ANDROID USERS MUST KNOW

Please choose "Keep", "Allow" or "Authorization" when these prompts appear.



3 Connect the WiFi

When you successfully turn on the app, just simply press 'Add Camera' > 'Next' > 'Add Camera' then it will jump to the WiFi setting of your cellphone. Simply join the Q6 WiFi by going into your iPhone or Android phone's Settings > WiFi > **Peztio-Q6-******. Then enter the default password: **12345678**. And join the network. Kindly refer to the connection diagram on the following page.



REMINDER

Once you connect to Peztio-Q6-**** WiFi, it will say 'No internet connection', which is fine and please select 'Keep trying wifi'. If you want to use the phone network, just disconnect the camera WiFi. The camera will continue to record even when there is no WiFi connected.

The Wi-Fi network "Peztio-Q6-****" does not appear to be connected to the Internet. Do you want to temporarily use cellular data?

Use Cellular Data

Keep Trying Wi-Fi

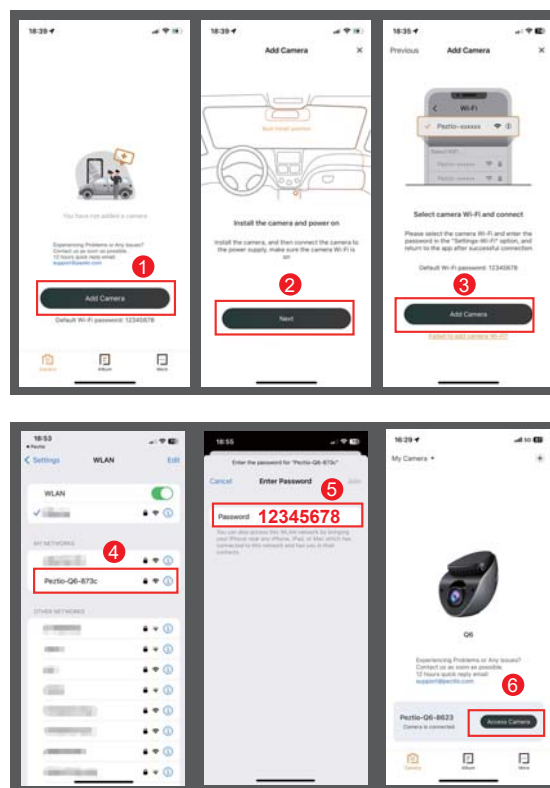
Conflicting with Carplay or Android Auto Connection:

This is because by default, the mobile phone prioritizes the connection with Carplay or Android Auto, making it challenging to establish a connection with the camera. To successfully connect the camera, please follow these steps:

1. Disable your mobile phone's Bluetooth.
2. Disconnect from any existing WiFi connections.
3. Turn off your car and ensure your mobile phone is no longer linked to Carplay or Android Auto.
4. Restart your car and then connect the camera with your phone.

Generally, it's advisable to maintain the priority connection with Carplay or Android Auto. The dash cam will continue recording automatically without needing to connect to your cellphone's WiFi, functioning as long as it has a power source.

WiFi CONNECTION - CONNECT THE WIFI



4 START TO USE

Once you've successfully connected your camera to the "Peztio-Q6-*****" WiFi, when you return to the Peztio app, the camera will sync automatically. You should now be able to view the live video feed from the camera within the Peztio app. From here, feel free to further explore the app's features.



WATCH GUIDE VIDEO

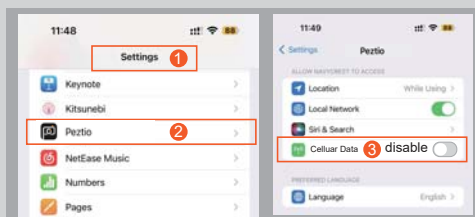
Please scan the code to watch the Q6 Dashcam WiFi connection video



CAN'T SEE PREVIEW VIDEO?

The cellular data will cause the live feed not to be viewed. Please following the steps below to get it fixed

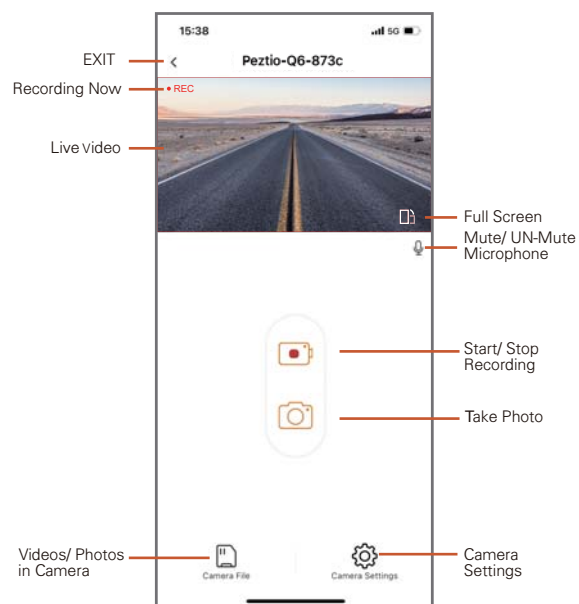
1. Go to the 'settings for your iphone'
2. scroll down until you find out the 'peztio'
3. click in peztio and disable the cellular data options



APP INTRODUCTION

App Interface

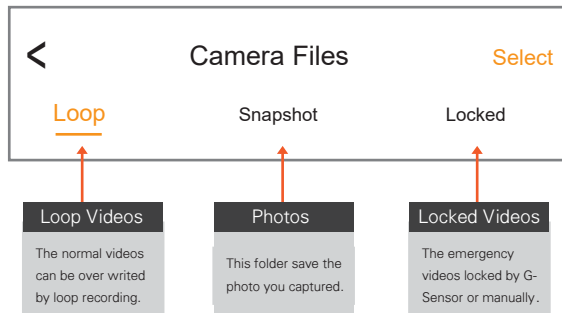
when you access to the camera, you will see the live time video of the dash cam.



APP INTRODUCTION - CHECK RECORDED VIDEOS

Check Recorded Videos on App

After you access the camera, you can press 'Camera Files' to check the recorded videos or photos of the dash cams. There are 3 folders for different albums.



FOR YOUR BEST EXPERIENCE

- (1) For the best effect, we recommend you to **DOWNLOAD** the videos because the preview resolution in the app is at just 720P while the actual video is 4K.
- (2) To enjoy smoother playback, we recommend downloading the video to your phone's album and watching it from there. Due to the substantial data requirements for 4K video playback, real-time streaming over WiFi might not handle such extensive data transmission, leading to freezing issues during in-app video playback.
- (3) The downloaded videos / photos will be saved in your local albums.

Check Recorded Videos on PC

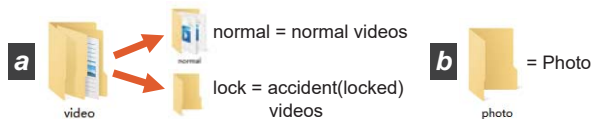
- 1 You can take out the SD card from the Q6 dash cam and directly insert it into your computer (if your computer doesn't have a memory card slot, you'll need to buy a 'Micro SD Card to USB Adapter').



- 2 After you insert the SD card to your computer, please search for the newly added flash drive. You should be able to see drive named 'CarDVR-Q6'.



- 3 Once you find the added flash drive 'CarDVR-Q6', give it a double click. Inside, you'll come across a folder named 'CarDV'. Within this folder, you'll find two more subfolders.



RECOMMEND VIDEO PLAYER

The video format used by the Q6 dash cam might not be compatible with your computer's default video player. We suggest downloading a VLC Player to play the videos. You can obtain it for free at www.videolan.org.



SETTINGS ON THE TOUCH SCREEN

1 Touch Screen Operation Guide

The touch screen function of the camera operates by sliding upwards, downwards, leftwards, and rightwards, without the need for clicking to make selections.

**** Any changes you make to the settings will be applied automatically when you return to the home screen without the need to confirm by clicking separately.**



There is a delay of about 0.5 second when swiping left and right, please feel free to use it. This is because of the time it takes the camera to switch between different settings.

2 Three Types of Home Screen Themes

You can choose your preferred theme by swiping up and down. Once selected, the system will use this theme by default.

Themes 1 (Default):

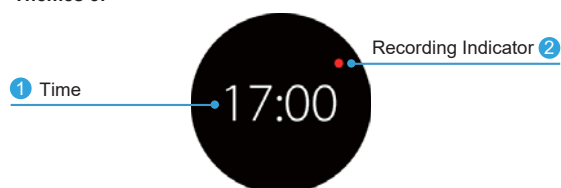


CAMERA SETTINGS ON TOUCH SCREEN

Themes 2:



Themes 3:



Circle Progress Bar

It indicates the recording progress for each loop recording duration you've configured. For instance, if you've set a 1-minute loop recording, it will show the progress for 1 minute of recording. Similarly, if you've set a 3-minute loop recording, it will represent 3 minutes of recording progress, and so forth.

CAMERA SETTINGS ON TOUCH SCREEN

3 System Settings

You can access camera settings by swiping left or right, and then choose settings by swiping up and down.

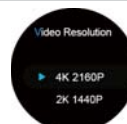


Upon entering the settings, the camera will pause recording automatically. Once you finish configuring the settings and return to the home screen, it will resume recording automatically.

Video Resolution

Select the resolution based on your needs. Higher resolution consumes more storage space.

- 4K 2160P (Default)



Loop Recording

Recorded videos' duration will be saved in the normal video folder as per your loop recording time.

- 1 Minute (Default)



G-Sensor

With a built-in 3-axis impact accelerometer, video files are automatically locked and stored upon collision or emergency shock, safeguarding critical footage.

To manually lock a video, press the "Power" button to secure and capture the current clip.

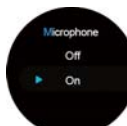
- Low (Default)



Microphone

The Q6 dash cam supports voice recording. You can enable it in settings to capture audio or disable it to avoid recording sound.

- On (Default)



CAMERA SETTINGS ON TOUCH SCREEN

Speaker Volume

This function lets you adjust the speaker volume. If the volume seems too high, you can lower it or mute it.

- Medium (Default)



Screen Saver

You can set the screen always on or automatically turns off if NO BUTTONS press for a period of time.

- Off (Default)



WiFi Frequency

In WiFi Mode, you can select the wifi band. The 2.4 GHz band covers a longer range with slower data transmission. The 5.0 GHz band has faster data speed but less coverage. We recommend using 5.0 GHz unless your iOS/Android device is older and supports only 2.4 GHz, which is rare now.

- 5 GHz (Default)



If your phone cannot find the camera's WiFi network, it might be because your phone does not support the 5GHz WiFi band, while the camera uses the default 5GHz band. To resolve this, please configure the camera to use the 2.4GHz WiFi band, then search for the camera's WiFi network on your phone.

Support Email

If you need any support on this product, please kindly scan the QR code or directly reach out to our email: support@affver.com



SETTINGS ON PEZTIO APP

1 VIDEO SETTINGS

Sound Recording

The Q6 dash cam supports voice recording, you can activate it on camera settings to record the voice or turn it off to prevent the voice from being recorded.

- On (Default)
- Off

Video Resolution

Choose the resolution you want according to your needs. The higher the resolution, the more storage space the video will take up.

- 4K (Default)
- 2K
- 1080P

Speaker Volume

This feature allows you to adjust the volume of the speaker, and if you feel the volume of the speaker is too loud, you can turn it down or turn it off. Voice contents:

- 🔊 Factory default success
- 🔊 Formatting is completed
- 🔊 Mute off
- 🔊 Mute on
- 🔊 Picture success
- 🔊 Please format the SD card
- 🔊 Please insert the SD card
- 🔊 Start recording
- 🔊 Start time-lapse video
- 🔊 Stop recording
- 🔊 Video locked

OPTIONS:

- Off
- Low
- Medium-
- Medium
- Medium+
- High

ADVANCED SETTINGS

Loop Record Options

The duration of each recorded video will be saved in the normal video folder according to the loop recording time you set. When the capacity of the normal video folder reaches 70% of the total, new loop recording files will automatically overwrite original loop recording files. After this function is enabled, the video file will automatically overwrite the loop, so as not to stop recording during the driving process.

- 1 minute (Default)
- 3 minutes
- 5 minutes

Exposure Compensation

Here you can adjust the brightness of the photo or video as your requirement.

- From +2.0 to -2.0
- 0.0 (Default)

Time Stamp

You can choose whether to put date watermark on the video.

- On (Default)
- Off

Anti Flicker

Please select the corresponding frequency according to the power specification used in your country/region.

- 50 Hz (Europe)
- 60 Hz (USA) (Default)

2 ADVANCED SETTINGS

Collision Sensing

Built-in 3-axis impact gravitational accelerometer, the video files will be locked and stored automatically when the collision sensor is triggered by emergency shock or collision, ensuring your most important footage is kept protected.

To manually lock the video, just press the "Lock" button to lock the current video and capture it.

PARKING MODE

- Off
- Middle
- Low (Default)
- High

Automatic Screen Off

The screen will be turned off automatically when reach the set time if no any operation on camera. The camera will continue to record even when there is no screen display.

- Off (Default)
- 1 minute
- 30 seconds
- 3 minutes

3 PARKING MODE



HARDWIRE KIT REQUIRED

This feature becomes accessible within camera settings only when the camera is powered by the hardwire kit. To enable this function, you'll require a Type C hardwire kit, available for separate purchase at

"<https://www.amazon.com/dp/B0CR1DVJ87>".

Alternatively, you can contact us to obtain a free hardwire kit for connecting to the Q6 by joining the promotion.

24-HR Auto Parking Mode



Q6 dash cam will execute the time-lapse records as a priority for the situation when you turn on the time-lapse record and parking monitor at the same time.

This function need hardwiring your dash cam. When time lapse is chosen, the camera will record at a rate of 1FPS. For instance, the current video resolution's frame rate is 30FPS, the camera will

PARKING MODE

produce one video with 30 frames per second. This low frame rate mode significantly preserves video quality and conserves memory card space.

- Off (Default)
- Time-Lapse Record (Recommended)



When the timelapse recording got activated, the camera will give you voice alert stating "start timelapse video" when you turn off your car.

Parking Monitor



Q6 dash cam will execute the time-lapse records as a priority for the situation when you turn on the time-lapse record and parking monitor at the same time.

This functionality is specifically intended for use when your vehicle is parked. Once you've installed the dedicated hardwire kit and established the connection, you can activate the parking mode via the Peztio app. While your car is parked, if the camera detects a collision, it will activate automatically, record for one minute, and then deactivate. The resulting video will be safeguarded as an emergency file, preventing it from being overwritten by the loop recording feature.

- Off (Default)
- Low
- Middle
- High



REMINDER

This function requires a hardwire kit. Meanwhile, please make sure the Collision Sensing is turned on because it is triggered by Collision Sensing.

GENERAL SETTINGS

Parking Monitor Duration

This function offers you the optional parking recording time. When the parking mode reaches the preset time, the camera will stop recording and automatically turn off.

- Off (Default)
- 12 hours
- 24 hours (Recommended)
- 48 hours

4 GENERAL SETTINGS

WiFi Name

This feature will allow you to change WiFi name from the camera so you can set a favorite WiFi name.

Default WiFi Name
Peztio-Q6-****

Password

Here you can change the WiFi password as your preference. Default password: **12345678**

Format SD Card

This feature can be used to format the memory card. After formatting, the files on the memory card will be deleted. Please back up important files before formatting.

Firmware Version

This feature indicates the firmware version used by the current camera, which can be used to determine whether to upgrade the firmware version.

Default Settings

This feature reset the camera back to factory settings.



How to reset the camera?

Hold the power button for 6 seconds. When you hear the second "Di" voice, release the button immediately. The camera will voice "factory default success" and be reset. Reconnect the wifi and

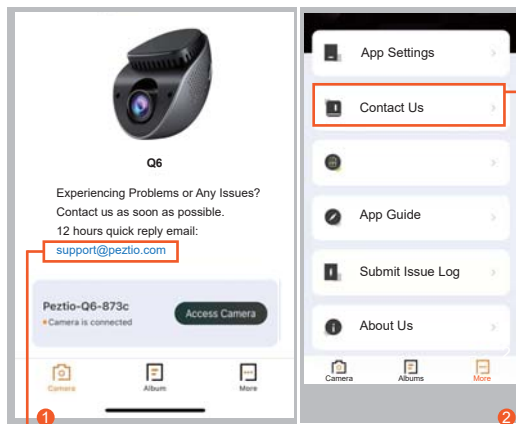
input the default password: 12345678.

How to set a new password?

1. Log in to the APP, enter the camera setting page, and modify the original wifi password.
2. **(Important step)** Disconnect the power of the camera, and then reconnect the power to restart the camera.
3. Log in to the APP, connect to the camera wifi, and enter the new password.
4. Please contact us for more help if the new password is failed.

NEED HELP?

If you have any issues or need from our after-sale support, there are 2 ways for you to get in touch with us in 'Peztio' app. Typically we will reply to you in 24 hours on working days!



Click the email address directly on "Camera" page.

Click 'Contact Us' on 'More' page.

SPECIFICATIONS

SPECIFICATIONS

| | |
|----------------------------|---|
| Display Screen | Touch Screen |
| WiFi | Built-in |
| G-sensor | Built-in |
| Resolution | 4K/2K/1080P |
| Sensor | 6 glass, Wide Angel Lens |
| Language | English, German, Japanese, etc |
| Video Format | .TS |
| Picture Format | JPG |
| Power interface | 5V/1.5A |
| Working Temperature | Working temperature -4°F to 167°F (-20° C to 75°C). |

Frequently Asked Question

1 Can't view live video on Peztio APP.

The cellular data will cause the live feed not to be viewed.
Please disable the "Peztio" cellular data of your cellphone.

Setting → Peztio → Disable the "Cellular Data"

2 Do you have to connect to camera WiFi signal each time you get in the car in order for it to record?

No, the dash cam will automatically record without connecting to your cellphone wifi. Camera will record as long as it has power.

3 How to use the 24 hours parking monitoring function?

To enable the 24 hours parking monitoring function on the Q6 dash cam, you will require a Type C hardwire kit (NOT included in the package). You can find the recommended kit on Amazon by searching for B0CR1DVJ87. If you prefer to get the FREE hardwire kit from us by joining the promotion, please feel free to reach out to us via WhatsApp or email.

4 Encountering issues connecting the camera while using Carplay/Android Auto?

This is because by default, the mobile phone prioritizes the connection with Carplay or Android Auto, making it challenging to establish a connection with the camera. To successfully connect the camera, please follow these steps:

1. Disable your mobile phone's Bluetooth.
2. Disconnect from any existing WiFi connections.
3. Turn off your car and ensure your mobile phone is no longer linked to Carplay or Android Auto.
4. Restart your car and then connect the camera with your phone.

FAQ

Generally, it's advisable to maintain the priority connection with Carplay or Android Auto. The dash cam will continue recording automatically without needing to connect to your cellphone's WiFi, functioning as long as it has a power source.

5 Failed to set new password.

The reason for this is that you haven't powered off the camera after changing the password. To resolve it, press and hold the lock button for 6 seconds to reset the password to 12345678, then proceed to change the password, power off the camera, restart it, and reconnect it with new password.

6 The camera is continuously recording, even when the car is turned off, running out of the car battery.

This occurs due to your car's cigarette lighter port having a continuous power supply (even when your car is switched off).

Please check if your car has a USB port? If it does, please verify whether it supplies power even when the ignition is off. If not, we can provide you with a USB-C cable to address this issue. For further assistance, please directly contact us via email.

7 What does it mean when the camera says "Video locked"?

It is caused by the collision sensing. Built-in 3-axis impact gravitational accelerometer, the video files will be locked and stored automatically when the collision sensor is triggered by emergency shock or collision, ensuring your most important footage is kept protected. We suggest you set the collision setting into 'LOW' level in camera settings.

8 The video playback on Peztio APP is blurry and freezing.

Due to the limitation of WiFi transmission rate, the videos you watch is only 480P if you don't download the files. So we suggest you download the videos to your phone and watch them in local

album. The downloaded video resolution can be up to 4K.

9 Loop recording doesn't work.

- (1) Please check your SD card version, this loop recording function requires a Class 10, U3 SD card within 128GB, otherwise your videos can't be saved or overwrite.
- (2) Make sure your loop recording is on and format your SD card, then set the G-Sensor at low sensitivity, your SD card may have too many locked videos and loop recording can't overwrite with these videos.

10 Can I monitor my car remotely?

Q6 is unable to stream footage over the cloud or the internet. It is not a cloud or IP camera, nor it is intended to be. As long as you are within 10 feet of your dash cam, you can get live feed and footage on Peztio APP.

11 Can't view the videos from the SD card.

Please google 'VLC Player', download and install it for free, this issue happens when your original player doesn't support the video format of the dash cam. So please use VLC Player to play the videos.

12 Missing Parts / Need accessories from us.

You may need accessories from us while using the Q6 dash cam or you may encounter missing part issues after receive our package, don't worry, just email us or Whatsapp us, we will send them to you.

13 Unresolved issues?

Please contact us email or whatsapp directly, and we are here to help. Typically we will reply you in 24 hours.

FCC WARNING

This device complies with part 15 of the FCC Rules. Operation is subject to the following two conditions: (1) this device may not cause harmful interference, and (2) this device must accept any interference received, including interference that may cause undesired operation. Any changes or modifications not expressly approved by the party responsible for compliance could void the user's authority to operate the equipment.

NOTE: This equipment has been tested and found to comply with the limits for a Class B digital device, pursuant to Part 15 of the FCC Rules. These limits are designed to provide reasonable protection against harmful interference in a residential installation. This equipment generates, uses and can radiate radio frequency energy and, if not installed and used in accordance with the instructions, may cause harmful interference to radio communications.

However, there is no guarantee that interference will not occur in a particular installation. If this equipment does cause harmful interference to radio or television reception, which can be determined by turning the equipment off and on, the user is encouraged to try

to correct the interference by one or more of the following measures:

- Reorient or relocate the receiving antenna.
- Increase the separation between the equipment and receiver.
- Connect the equipment into an outlet on a circuit different from that to which the receiver is connected.
- Consult the dealer or an experienced radio/TV technician for help.

To maintain compliance with FCC's RF Exposure guidelines, This equipment should be installed and operated with minimum 20cm distance between the radiator and your body:

Use only the supplied antenna.

Sincere Thanks

Dear customer,

Thanks for choosing our Affver dash cam. As you are the most valuable customer of us, we provide 12 months warranty & life time customer care for you. [Please regist](#)

- [your product on our website \(following the steps below\)](#) and we will provide the warranty service and customer care for you.

- [If you have any problem about our dash cam, please contact us via the email or whatsapp.](#) Typically we will reply in 24 hours on working days and we will try our best to help, thank you!

Sincerely,

Affver

REGISTER YOUR 12 MONTH WARRANTY (CUSTOMER CARE)



REGISTER WITHIN THE FIRST 30 DAYS

Scan this QR Code Using your iPhone or Andriod's Camera to start your Product Registration.

Or visit the link using mobile or PC/MAC:
peztio.com/apps/product-registration



CUSTOMER SUPPORT

support@affver.com

Scan to download the 'Peztio' APP