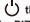



User Manual

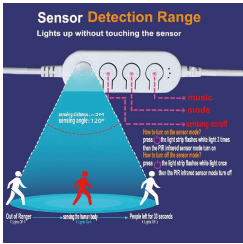
Thank you for buying this product. To provide an excellent user experience, please install it according to these instructions and then give the instructions to appropriate person for renovation and future reference.

How to turn on the sensor mode?

Press  the light strip flashes white light 3 times then the PIR infrared sensor mode turn on

How to turn on the sensor mode?

Press  the light strip flashes white light once then the PIR infrared sensor mode turn off



LotusLamp X APP Manual

1. Software Overview

1.1 Overview

LotusLamp X is a mobile APP to control LED strip by both Apple and Android phones.

The traditional control ways like infrared, 433MHz, 2.4GHz and others old wired ways will be replaced by mobile phone control way with convenient, powerful and scalable features.

Through this mobile APP, you can not only control the color, brightness and color temperature of the LED strips but also set up all kinds of fancy flash mode. Also this APP can change the light of the LED strip according to the rhythm of the music. This APP can set and control several LED strips through Bluetooth and the operation is very simple, easy to learn and easy to use.

1.2 Features

- Adjust color LED strips with 60,000 colors to change color and brightness and adjust monochrome LED strips to change brightness and color temperature
- Play music or turn on a sound playback device, you can let the light change the color and brightness with the rhythm of music, the music rhythm beautiful
- Include multiple setting mode for color change and control LED strips without mobile
- Long distance control with omni-directional antenna, and many-to-many group control mode

- Once the connection is successful, connect automatically next time

1.3 Performance

LotusLamp X APP is easy for use as well as great compatible for all kinds of smart phones. After the actual test of hundreds of mobile phones verification, the compatibility is above 95% of mobile phones in the market. APP is small and convenient, it consumes less system resources, so the requirements of the mobile configuration are low. Control delay is small, the operation feel good, light control is smooth with people's visual sense.

2. Operating Environment

This APP program requires phones of system above Android 5.0 and iOS 11.0. Mobile phone configuration is not limited.

3. Instructions

Note: Android version and iOS version download and use the same method, here in the Android version as an example.

3.1 APP Download

- Scan the QR code

iOS and Android systems can download the "LotusLamp X" APP by scanning the QR code. Open the browser or other tools with "Scan QR code" function, scan the "LotusLamp X" QR code as below:

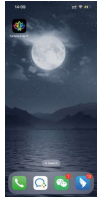


After the software is successfully downloaded, click APK to install. After the installation, the following program icon will appear on the desktop:



3.2 App Operation

- Click on the LotusLamp APP icon, enter the APP page:



- After entering the APP, the device list page is displayed:

FCC Warning Statement

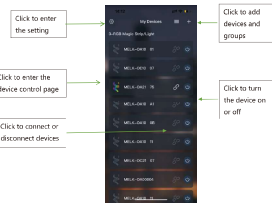
Changes or modifications not expressly approved by the party responsible for compliance could void the user's authority to operate the equipment. This equipment has been tested and found to comply with the limits for a Class B digital device, pursuant to Part 15 of the FCC Rules. These limits are designed to provide reasonable protection against harmful interference in a residential installation. This equipment generates uses and can radiate radio frequency energy and, if not installed and used in accordance with the instructions, may cause harmful interference to radio communications. However, there is no guarantee that interference will not occur in a particular installation. If this equipment does cause harmful interference to radio or television reception, which can be determined by turning the equipment off and on, the user is encouraged to try to correct the interference by one or more of the following measures:

- Reorient or relocate the receiving antenna.
- Increase the separation between the equipment and receiver.
- Connect the equipment into an outlet on a circuit different from that to which the receiver is connected.
- Consult the dealer or an experienced radio/TV technician for help.

FCC Radiation Exposure Statement

The antennas used for this transmitter must be installed to provide a separation distance of at least 20 cm from all persons and must not be co-located for operating in conjunction with any other antennas or transmitter.

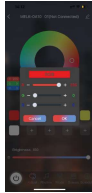
This device complies with Part 15 of the FCC Rules. Operation is subject to the following two conditions:
(1) This device may not cause harmful interference.
(2) This device must accept any interference received, including interference that may cause undesired operation.



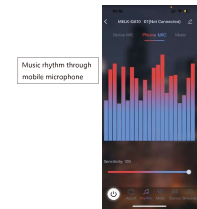
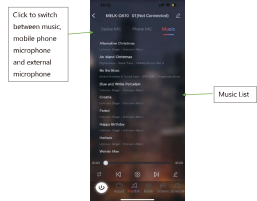
- Click the device list on the home page to switch to color and brightness interface:



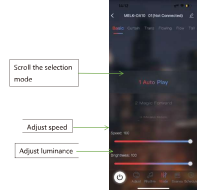
- Click to RGB manual adjustment view:



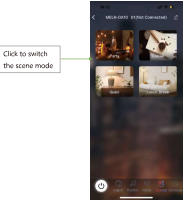
- Switch to the rhythm interface:



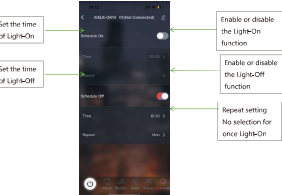
- Switch to the rhythm interface:



- Switch to the scene interface:



- Switch to the schedule interface:



- Switch to the setting interface:

